

NOTES:  
1. SEE P.O.X. SERIES FOR GENERAL NOTES, SCHEDULES, AND DETAILS.



**ZPA**  
**POOLE & POOLE ARCHITECTURE**  
3736 Winterfield Road, Suite 102  
Midlothian, Virginia 23113  
Telephone 804.275.0215  
www.zpa.net

Project: 1928  
CADD File:  
Drawn By: NT  
Checked By: BE  
Permit Release:  
May 19, 2020  
Construction Release Set:  
May 19, 2020

Revisions

No.	Date	Description
1	03/19/21	Owner Comments

ASI / RFI Revisions

No.	Date	Description
-----	------	-------------

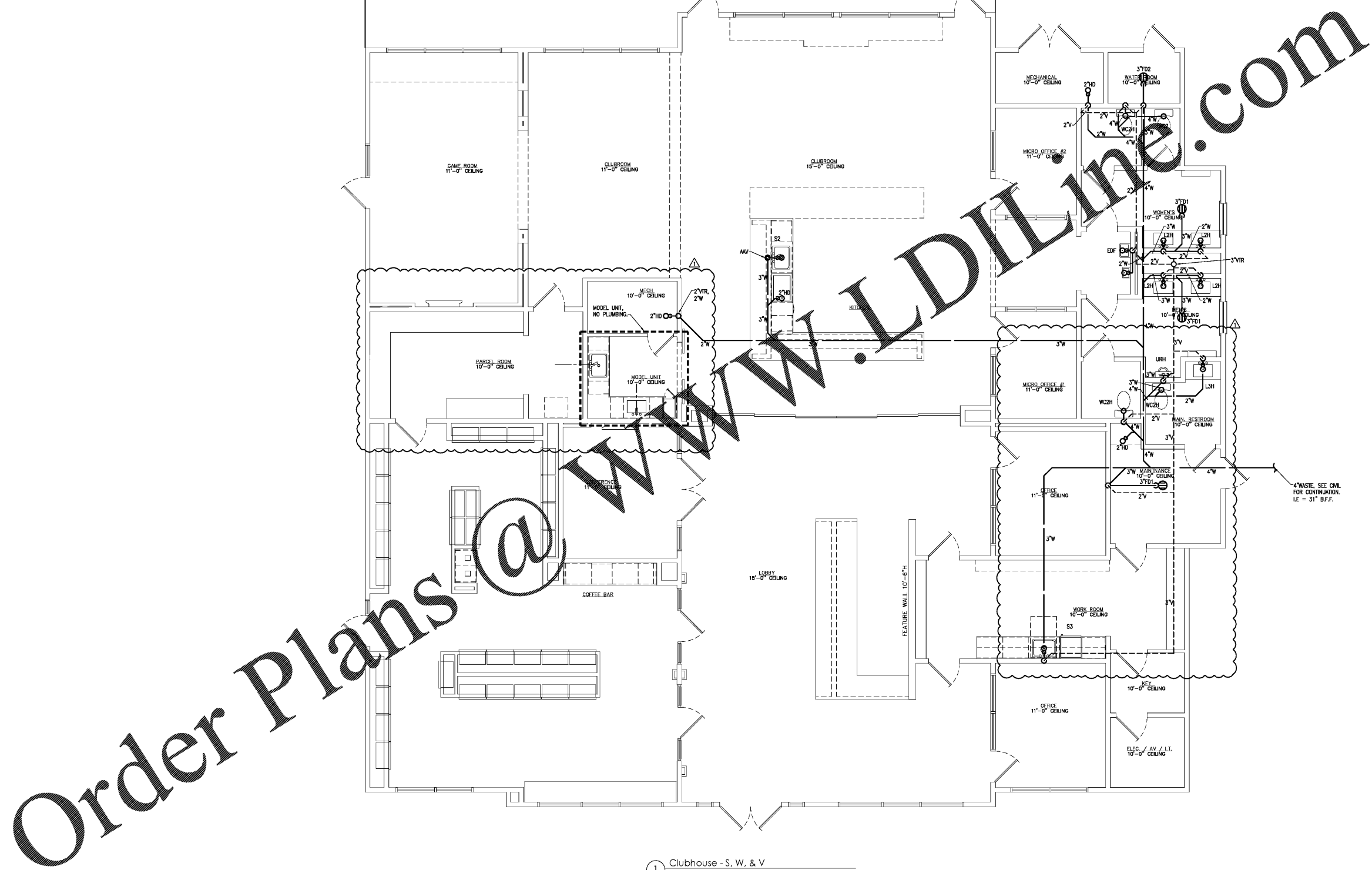
© 2019 Poole & Poole Architecture, LLC  
All drawings and specifications are the property of Poole & Poole Architecture, LLC and shall not be used or reproduced in whole or in part without the prior written consent of Poole & Poole Architecture, LLC.

**PRISSE GRABER ENGINEERING, P.C.**  
100 N. Riverside Drive  
Chattanooga, TN 37402  
423.242.1111  
www.pgs-engineering.com

**Borough 33**  
an Apartment Community by  
33 Broad MF, LLC  
in Chattanooga, Tennessee

Drawing Title:  
Clubhouse  
Plumbing

**P6.1**



1 Clubhouse - S, W, & V  
Scale: 1/4" = 1'-0"

Order Plans @ [www.wldilme.com](http://www.wldilme.com)