

KEY NOTES

1. PROVIDE TWO WAY COMMUNICATIONS SYSTEM. COORDINATE EXACT LOCATION AND SYSTEM REQUIREMENTS WITH FIRE DEPARTMENT AND MANUFACTURER PRIOR TO COMMENCEMENT OF WORK. INSTRUCTIONS FOR REQUESTING ASSISTANCE VIA THE TWO WAY COMMUNICATION SYSTEM AND WRITTEN IDENTIFICATION OF THE LOCATIONS SHALL BE POSTED ADJACENT TO EACH BOX IN ELEVATOR LOBBIES.
2. METER TO BE MOUNTED ABOVE CT CABINET. THE CENTER OF THE METER IS NOT TO EXCEED A HEIGHT OF 6'-0" AFF.
3. PROVIDE ONE OUTLET AT DOOR HEAD HEIGHT FOR SUB METER TRANSMITTERS, ACCESS CONTROL HARDWARE, AND ADDITIONAL MODEM OR TELECOM EQUIPMENT. COORDINATE EXACT EQUIPMENT REQUIREMENTS WITH OWNER PRIOR TO ROUGH-IN.
4. PROVIDE CARD READER/KEYPAD J-BOX AT LOCATION INDICATED WITH 3/4" CONDUIT TO TOP OF DOOR JAM. PROVIDE 3/4" FROM DOOR JAM J-BOX TO CONCEALED JUNCTION BOX ADJACENT TO STRIKE PLATE. ROUTE 1" FROM DOOR JAM J-BOX TO ELEC/DATA ROOM DETERMINED BY OWNER. PROVIDE FIRE ALARM RELAY CONTROL AT SECURE DOOR CONTROLS SO THAT UPON FIRE ALARM OR POWER FAILURE DOOR DEFAULTS TO UNLOCKED OPEN POSITION. COORDINATE EXACT DOOR REQUIREMENTS WITH SECURITY VENDOR CONSULTANT.

GENERAL NOTES (THIS SHEET ONLY)

1. (E) INDICATES HVAC EQUIPMENT. SEE E6-01 FOR MECHANICAL EQUIPMENT CONNECTION SCHEDULE.
2. DO NOT INSTALL DEVICES BACK TO BACK IN ANY FIRE RATED WALL. PROVIDE MINIMUM 24" HORIZONTAL SPACE BETWEEN SUCH OUTLETS.
3. SEAL ALL PENETRATIONS IN EVERY FIRE RATED WALL AND FLOOR PER UL TO MAINTAIN THE WALL AND FLOOR ORIGINAL RATING.
4. FINAL LIGHTING LOCATIONS AND SELECTIONS TO BE DETERMINED BY ARCHITECT/INTERIOR DESIGNER.
5. PROVIDE #10 CONDUCTORS FOR ANY 120V CIRCUIT OVER 100'. PROVIDE #8 CONDUCTOR FOR ANY CIRCUIT OVER 150'.
6. PROVIDE CONNECTION TO FIRE ALARM CONTROL PANEL FROM ALL FIRE ALARM DEVICES.
7. TYPE N.M. WIRING FOR BRANCH CIRCUIT WIRING FOR TYPE III, IV AND V CONSTRUCTION IF ACCEPTABLE TO LOCAL AUTHORITY HAVING JURISDICTION. PROVIDE I.C. CABLE OR IMB/IMT CONDUIT FOR BRANCH CIRCUITS IN ALL OTHER CONSTRUCTION TYPES AND IN RETURN AIR PLENUM ROOMS OR SPACES.
8. COORDINATE LOCATION AND QUANTITY OF FIRE/SMOKE AND/OR SMOKE DAMPERS WITH MECHANICAL CONTRACTOR PRIOR TO BID. COORDINATION OF LOCATIONS AND QUANTITIES WILL OVERRIDE LOCATIONS AND QUANTITIES INDICATED ON ELECTRICAL DRAWINGS. PROVIDE A 120V UNWIRING CIRCUIT TO EACH FIRE/SMOKE DAMPER AND/OR SMOKE DAMPER. PROVIDE A DUCT MOUNTED SMOKE DETECTOR IN FIRE/SMOKE DAMPER SHUNT. CONNECT DUCT MOUNTED SMOKE DETECTOR AND FIRE/SMOKE AND/OR SMOKE DAMPER TO FIRE ALARM SYSTEM. A CHANGE ORDER WILL NOT BE ALLOWED FOR LACK OF COORDINATION BETWEEN THE ELECTRICAL AND MECHANICAL CONTRACTOR FOR LOCATION AND QUANTITY OF FIRE/SMOKE DAMPER AND/OR SMOKE DAMPERS.
9. SEE SHEETS E1.1 THRU E1.10 FOR TYPICAL UNIT PLANS.
10. ALL CEILING MOUNTED CORRIDOR LIGHTING FIXTURES ARE TYPE 'A'.
11. ALL UNIT ENTRY WALL SCONCE LIGHTING FIXTURES ARE TYPE 'B'.
12. ALL STRIP FIXTURES ARE TYPE 'C/C'.
13. ALL STARWELL FIXTURES ARE TYPE 'DE'.
14. ALL EMERGENCY LIGHTING FIXTURES ARE TYPE 'EM'.
15. ALL EXIT SIGNS ARE TYPE 'X'.

Seal  
  
**ZPA**  
**POOLE & POOLE ARCHITECTURE**  
 3736 Winterfield Road, Suite 102  
 Midlothian, Virginia 23113  
 Telephone 804.275.0215  
 www.zpa.net

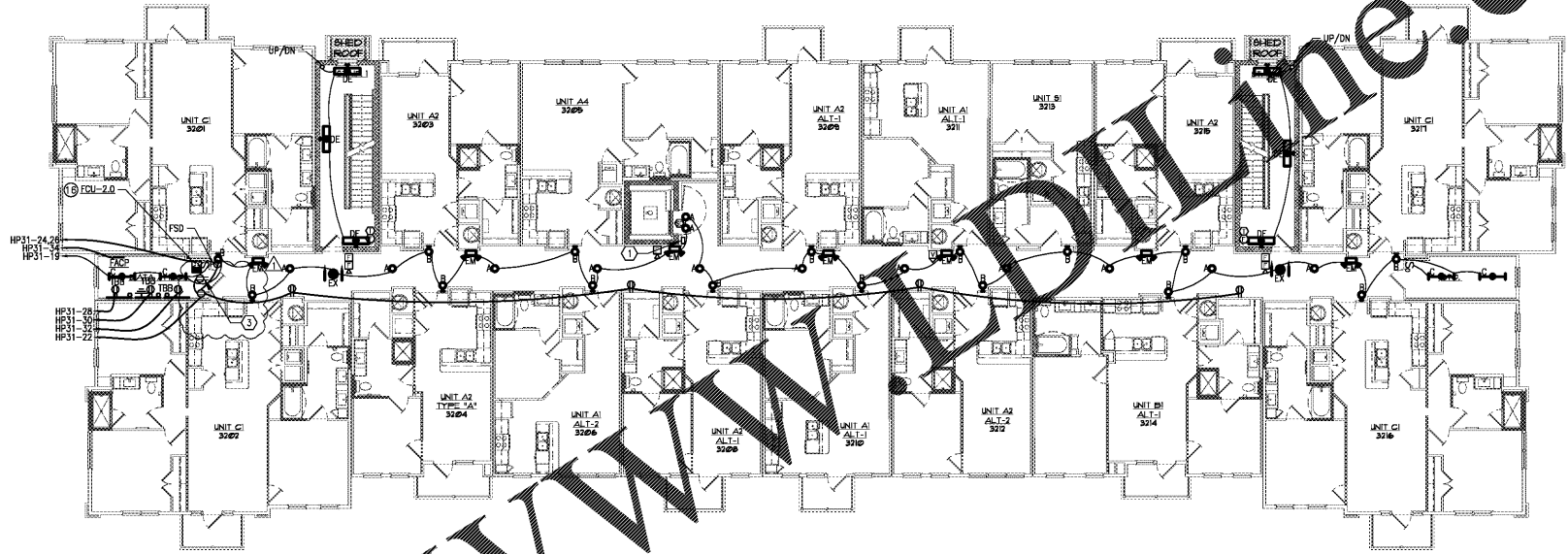
Project: 1928  
 CADD File:  
 Drawn By: SW  
 Checked By: WM  
 Permit Release:  
 May 15, 2020  
 Construction Release Set:  
 May 15, 2020  
 Revisions  

No.	Date	Description
1	03/19/21	Owner Comments

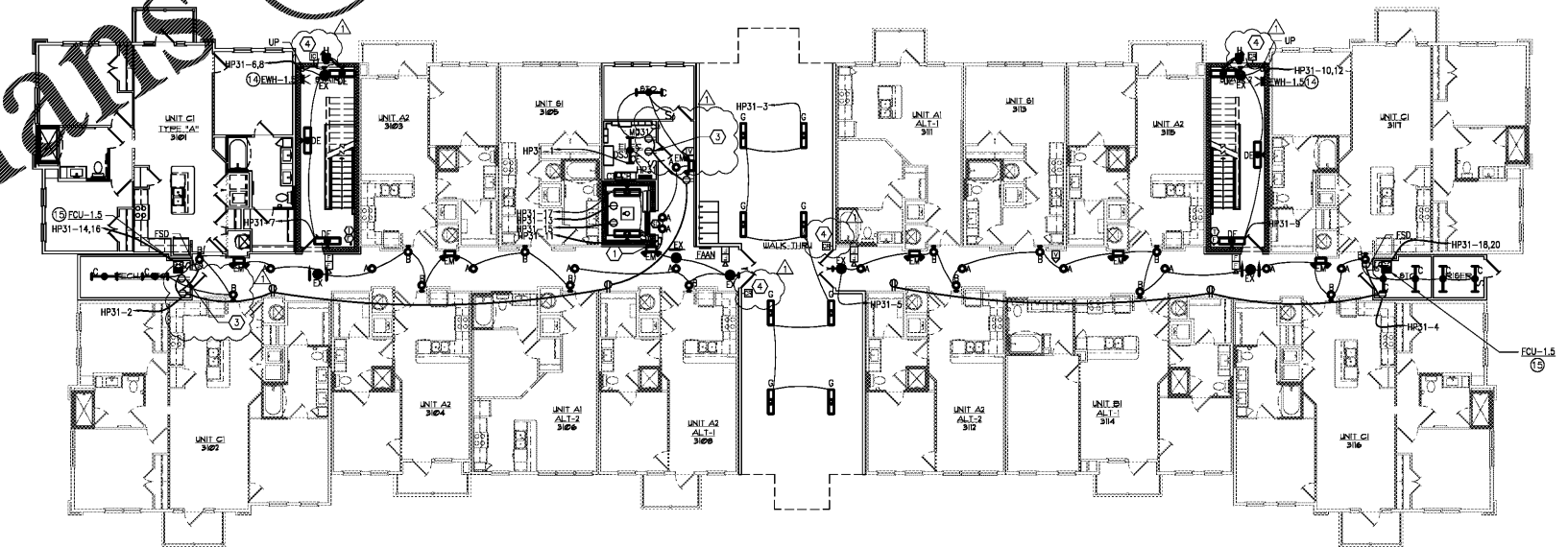
ASI / RFI Revisions  

No.	Date	Description
-----	------	-------------

© 2019 Poole & Poole Architects, LLC.  
 Drawings and specifications are the property of Poole & Poole Architects, LLC and shall not be used for any other project without the written consent of Poole & Poole Architects, LLC.  
 POOLE & POOLE ARCHITECTURE, F.C.  
 1010 N. BROADWAY  
 SUITE 200  
 CHATTANOOGA, TN 37402  
 TEL: 423.249.1111  
 FAX: 423.249.1112  
 WWW.ZPA.NET



2 Building 3 - Second Level - Electrical  
 Scale: 3/32" = 1'-0"



1 Building 3 - First Level - Electrical  
 Scale: 3/32" = 1'-0"

Order Plans @

**Borough 33**  
 an Apartment Community by  
 33 Broad MF, LLC  
 in Chattanooga, Tennessee

Drawing Title:  
 Building 3  
 Building Plans - Electrical

**E2.3a**