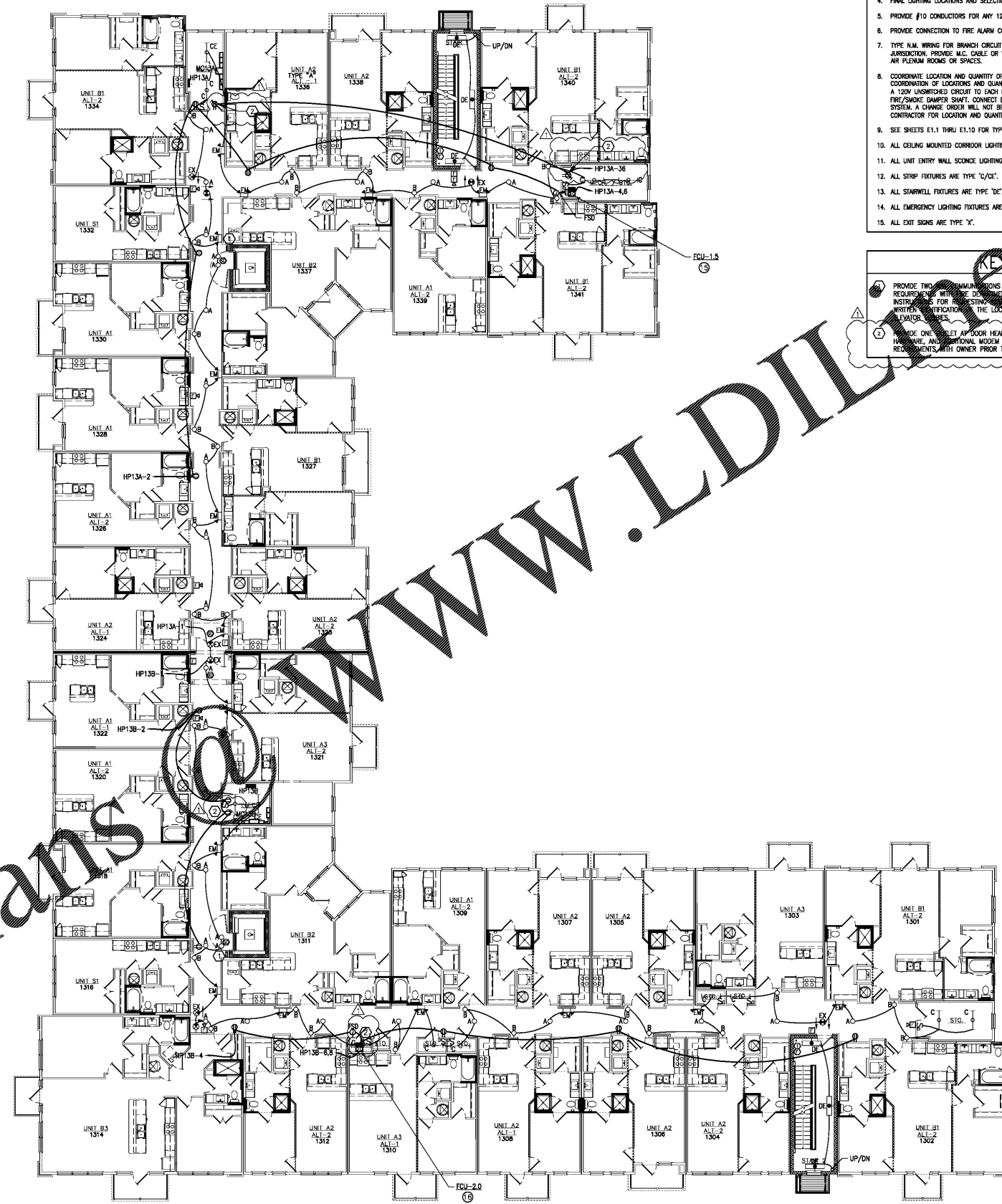


Order Plans @ www.LDILL.com



- GENERAL NOTES** (THIS SHEET ONLY)
- ① INDICATES HVAC EQUIPMENT. SEE E6-01 FOR MECHANICAL EQUIPMENT CONNECTION SCHEDULE.
 - DO NOT INSTALL DEVICES BACK TO BACK IN ANY FIRE RATED WALL. PROVIDE MINIMUM 24" HORIZONTAL SPACE BETWEEN SUCH OUTLETS.
 - SEAL ALL PENETRATIONS IN EVERY FIRE RATED WALL AND FLOOR PER UL TO MAINTAIN THE WALL AND FLOOR ORIGINAL RATING.
 - FINAL LIGHTING LOCATIONS AND SELECTIONS TO BE DETERMINED BY ARCHITECT/INTERIOR DESIGNER.
 - PROVIDE #10 CONDUCTORS FOR ANY 120V CIRCUIT OVER 100'. PROVIDE #8 CONDUCTOR FOR ANY CIRCUIT OVER 150'.
 - PROVIDE CONNECTION TO FIRE ALARM CONTROL PANEL FROM ALL FIRE ALARM DEVICES.
 - TYPE N.M. WIRING FOR BRANCH CIRCUIT WIRING FOR TYPE II, IV AND V CONSTRUCTION IF ACCEPTABLE TO LOCAL AUTHORITY HAVING JURISDICTION. PROVIDE M.C. CABLE OR WIRE/EMT CONDUIT FOR BRANCH CIRCUITS IN ALL OTHER CONSTRUCTION TYPES AND IN RETURN AIR PLENUM ROOMS OR SPACES.
 - COORDINATE LOCATION AND QUANTITY OF FIRE/SMOKE AND/OR SMOKE DAMPERS WITH MECHANICAL CONTRACTOR PRIOR TO BID. COORDINATION OF LOCATIONS AND QUANTITIES WILL OVERRIDE LOCATIONS AND QUANTITIES INDICATED ON ELECTRICAL DRAWINGS. PROVIDE A 120V UNGROUNDED CIRCUIT TO EACH FIRE/SMOKE DAMPER AND/OR SMOKE DAMPER. PROVIDE A DUCT MOUNTED SMOKE DETECTOR IN FIRE/SMOKE DAMPER SHAFT. CONNECT DUCT MOUNTED SMOKE DETECTOR AND FIRE/SMOKE AND/OR SMOKE DAMPER TO FIRE ALARM SYSTEM. A CHANGE ORDER WILL NOT BE ALLOWED FOR LACK OF COORDINATION BETWEEN THE ELECTRICAL AND MECHANICAL CONTRACTOR FOR LOCATION AND QUANTITY OF FIRE/SMOKE DAMPER AND/OR SMOKE DAMPERS.
 - SEE SHEETS E1.1 THRU E1.10 FOR TYPICAL UNIT PLANS.
 - ALL CEILING MOUNTED CORRIDOR LIGHTING FIXTURES ARE TYPE 'A'.
 - ALL UNIT ENTRY WALL SCONCE LIGHTING FIXTURES ARE TYPE 'B'.
 - ALL STRIP FIXTURES ARE TYPE 'C/C'.
 - ALL STAIRWELL FIXTURES ARE TYPE 'D/C'.
 - ALL EMERGENCY LIGHTING FIXTURES ARE TYPE 'E'.
 - ALL EXIT SIGNS ARE TYPE 'X'.

- KEY NOTES**
- ① PROVIDE TWO-WAY COMMUNICATIONS SYSTEM. COORDINATE EXACT LOCATION AND SYSTEM REQUIREMENTS WITH THE DESIGNER AND MANUFACTURER PRIOR TO COMMENCEMENT OF WORK. INSTRUCTIONS FOR REGISTERING THE SYSTEM SHALL BE POSTED ADJACENT TO EACH BOX IN ELEVATOR SHAFTS.
 - ② PROVIDE ONE INCH LET ABOVE HEAD HEIGHT FOR SUB METER TRANSMITTERS. ACCESS CONTROL HARDWARE, AND ADDITIONAL MODERN OR TELECOM EQUIPMENT. COORDINATE EXACT EQUIPMENT REQUIREMENTS WITH OWNER PRIOR TO ROUGH-IN.

① Building 1 - Third Level - Electrical
Scale: 3/32" = 1'-0"

Plan



Project: 1928
CADD File:
Drawn By: SW
Checked By: WM
Permit Release:
May 19, 2020
Construction Release Set:
May 19, 2020

Revisions

No.	Date	Description
1	03/19/21	Owner Comments

ASI / RFI Revisions

No.	Date	Description
-----	------	-------------

Borough 33
an Apartment Community by
33 Broad MF, LLC
in Chattanooga, Tennessee



Drawing Title:
Building 1
Building Plan - Electrical

E2.1c

REVISIONS: SW, WM, RFP, RFP