

Order Plans @ WWW.LPOnline.com

### LOAD CENTER B3 SCHEDULE

VOLTAG	BRK	AMP	LOAD	W/	FLUSH	REMARKS
1	20A	1.2	20A	3.5	302	2.3
2	20A	0.7	15A	3.5	302	2.3
3	20A	1.5	20A	3.5	302	2.3
4	20A	1.5	20A	3.5	302	2.3
5	20A	1.5	20A	3.5	302	2.3
6	20A	1.5	20A	3.5	302	2.3
7	20A	1.5	20A	3.5	302	2.3
8	20A	1.5	20A	3.5	302	2.3
9	20A	1.5	20A	3.5	302	2.3
10	20A	1.5	20A	3.5	302	2.3
11	20A	1.5	20A	3.5	302	2.3
12	20A	1.5	20A	3.5	302	2.3
13	20A	1.5	20A	3.5	302	2.3
14	20A	1.5	20A	3.5	302	2.3
15	20A	1.5	20A	3.5	302	2.3
16	20A	1.5	20A	3.5	302	2.3
17	20A	1.5	20A	3.5	302	2.3
18	20A	1.5	20A	3.5	302	2.3
19	20A	1.5	20A	3.5	302	2.3
20	20A	1.5	20A	3.5	302	2.3
21	20A	1.5	20A	3.5	302	2.3
22	20A	1.5	20A	3.5	302	2.3
23	20A	1.5	20A	3.5	302	2.3
24	20A	1.5	20A	3.5	302	2.3

### LOADCENTER "B3" CALCULATION

LIGHTING AND RECEPTACLE LOAD	1368	3F x 3WAVE	4,188	VA
TWO 20A 4EP. BRNCE. CIRCUITS			3,800	VA
LAUNDRY CIRCUIT			1,500	VA
RANGE			8,800	VA
WATER HEATER			4,500	VA
DISHWASHER			1,100	VA
CLOTHES DRYER			5,000	VA
REFRIGERATOR			1,200	VA
DISPENSAL			460	VA
MICROWAVE/STOVE			950	VA
FURNACE FAN			582	VA
SUBTOTAL			30,864	VA
FIRST 100% @ 100%			10,600	VA
80% OF REMAINDER			8,357	VA
SUBTOTAL PER NEC 220.42(b)			18,957	VA
HVAC			2,364	VA
HEAT			3,800	VA
TOTAL HVAC			6,164	VA
HEAT @ 80% & COMP @ 100% PER NEC 220.42(c)			5,412	VA
SUBTOTAL PER NEC 220.42(b)			18,367	VA
HVAC PER NEC 220.42(c)			2,364	VA
TOTAL DEMAND LOAD			20,731	VA
23,791 VA @ 114.38 AMP @ 125 AMP SERVICE				

TOTAL CONNECTED LOAD: 37,858 VA  
 NUMBER OF 15A LIGHTING/RECEPTACLE BRANCH CIRCUITS: 12  
 FEEDER SIZE: 3#14 AL, 3#14 AL, 3#14 AL FOR LOADCENTER WITH 120 FEET  
 3#25 AL, 3#14 AL, 3#14 AL FOR LOADCENTER WITH 120 FEET

### FAIR HOUSING NOTES

ALL WORK SHALL BE INSTALLED IN STRICT ACCORDANCE WITH THE HUD FAIR HOUSING ACCESSIBILITY GUIDELINES (FHAG), AND AMERICANS WITH DISABILITIES ACT ACCESSIBILITY GUIDELINES (ADAAG) TITLE III.

1.1.1. LIGHT SWITCHES (WITH THE TOGGLE SWITCH IN THE "ON" POSITION) MUST NOT EXCEED A MAXIMUM OF 48" A.F.F.

1.1.2. ALL OUTLETS (POWER OR DATA) AND SWITCHES OVER THE KITCHEN AND BATHROOM COUNTERTOPS MUST NOT EXCEED A MAXIMUM OF 44" A.F.F. TO THE CENTERLINE OF THE OUTLET.

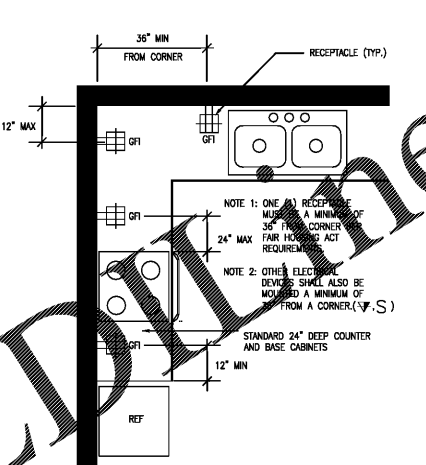
1.1.3. IN L OR U SHAPED KITCHENS, AT LEAST ONE (1) OUTLET MUST BE CENTERED A MINIMUM OF 36" FROM EACH INSIDE CORNER.

1.1.4. IN L OR U SHAPED KITCHENS, IF OTHER DEVICES ARE PLACED ON AN INSIDE CORNER, THEN THEY SHALL BE MOUNTED A MINIMUM OF 36" FROM AN INSIDE CORNER.

1.1.5. SIDEWALL OUTLETS AT THE VANITY COUNTERTOPS SHALL BE CENTERED A MINIMUM OF 18" FROM INSIDE WALL CORNER. IF THE OUTLETS ARE MOUNTED ON THE MIRROR WALL, THEN THE WALL OUTLET SHALL BE A MINIMUM OF 24" FROM THE INSIDE WALL CORNER TO PROVIDE A PARALLEL APPROACH.

1.1.6. WALL OUTLETS MUST BE INSTALLED A MINIMUM OF 15" A.F.F. TO THE CENTER LINE OF THE BOTTOM OUTLET.

1.1.7. TOP OF THE THERMOSTATS SHALL BE MOUNTED NO HIGHER THAN 48" A.F.F. IN ALL UNITS AND COMMON AREAS.



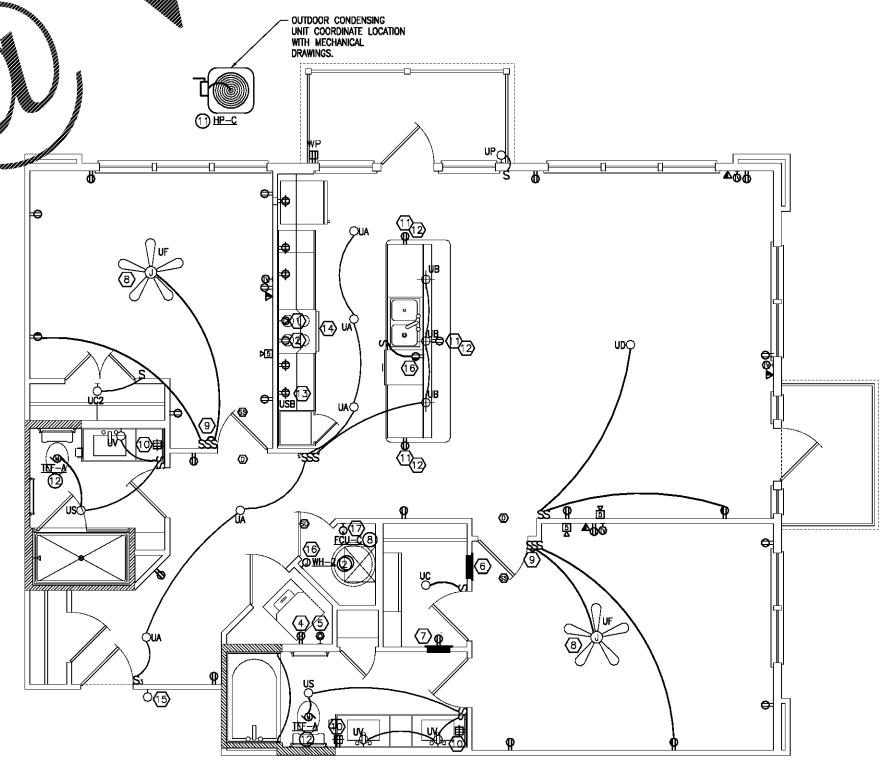
3 ELECTRICAL DEVICES - DWELLING UNIT KITCHEN  
 Scale: NOT TO SCALE  
 Plan

### GENERAL NOTES

- TYPE NM-B WIRING FOR BRANCH CIRCUIT WIRING FOR TYPES III, IV, AND V CONSTRUCTION IF ACCEPTABLE TO LOCAL JURISDICTION HAVING AUTHORITY. PROVIDE M.C. CABLE OR WIRE/CONDUIT FOR ALL OTHER CONSTRUCTION TYPES.
- SEAL ALL OUTLET BOXES PER LOCAL ENERGY CODE.
- INTERCONNECT SMOKE DETECTORS IN INDIVIDUAL UNITS SO THAT INITIATION OF ONE WILL CAUSE INITIATION OF ALL.
- INDICATED MECHANICAL EQUIPMENT, SEE EXXX FOR MECHANICAL CONNECTION SCHEDULE.
- OUTLET BOXES SHALL NOT BE INSTALLED WITHIN ANY WALL BACK TO BACK.
- ELECTRICAL OUTLET BOXES IN THE PARTY WALL(S), AS WELL AS INTERIOR WALLS, SHALL BE STAGGERED SO THAT THEY ARE NOT BACK-TO-BACK. PUTTY PACKS SHALL BE INSTALLED AROUND ALL BOXES. IF A SITUATION ARISES WHERE THE OUTLET BOXES MUST BE INSTALLED BACK-TO-BACK, USE A SOLID PANEL TO BLOCK NOISE TRANSMISSION BETWEEN THE BACK OF THE BOXES. IN ADDITION, USE ACOUSTICAL INSULATION BETWEEN THE SOLID BLOCKING PANEL AND THE WALL SURFACES, COMPLETELY SURROUNDING THE OUTLET BOXES.
- GFCI OUTLETS SHALL NOT BE INSTALLED IN MIRRORS. COORDINATE EXACT LOCATION WITH ARCHITECT PRIOR TO ROUGH-IN.
- SINGLE STATION SMOKE/CO DETECTORS SHALL BE PHOTOELECTRIC TYPE. PROVIDE GENEX TYPE 503F OR EQUIV. SMOKE ALARMS SHALL BE PROVIDED FROM 120V A/C POWER SOURCE AND HAVE A BACKUP BATTERY. SMOKE ALARMS A/C POWER SHALL BE SUPPLIED BY UNSWITCHED PORTION OF 15A BEDROOM CIRCUIT. SMOKE ALARMS SHALL BE INTERCONNECTED TO ALL UNITS SO THAT INITIATION OF ONE WILL CAUSE INITIATION OF ALL OTHERS. SEE 707.2 FOR SMOKE DETECTOR INFORMATION.
  - INSTALLATION REGARDLESS OF LOCATION SHOWN ON DRAWINGS, INSTALL BASED ON 1-1/4" BELOW CEILING.
  - INSTALL INSIDE AND OUTSIDE OF EVERY SLEEPING AREA AND ON ALL LEVELS OF SLEEPING UNITS. DETECTOR SHALL BE INSTALLED WITHIN 21 FEET OF ANY DOOR TO SLEEPING ROOM.
  - SMOKE ALARMS SHALL NOT BE LOCATED WITHIN 36" HORIZONTAL PATH FROM SUPPLY REGISTERS OF A FORCED AIR HEATING OR COOLING SYSTEM AND SHALL BE INSTALLED OUTSIDE OF THE DIRECTION OF AIRFLOW FROM THESE REGISTERS. COORDINATE EXACT LOCATION OF SMOKE ALARMS WITH MECHANICAL CONTRACTOR PRIOR TO ROUGH-IN.
  - SMOKE ALARMS SHALL NOT BE LOCATED WITHIN 36" HORIZONTAL PATH FROM THE TIP OF THE BLADE OF A CEILING-SUSPENDED PENDULUM FAN.
- SEE ARCHITECTURAL REFLECTED CEILING PLAN FOR EXACT LOCATIONS OF LIGHTING FIXTURES.
- FINAL SELECTION, QUANTITY, AND LOCATION OF LIGHTS IN APARTMENTS TO BE COORDINATED WITH ARCHITECT AND INTERIOR PRIOR TO BID.
- TYPE NM-B CABLE IS NOT ALLOWED EXPOSED IN HVAC CLOSETS. PROVIDE TYPE M.C. CABLE OR ROUTE TYPE NM-B CABLE IN FLEXIBLE METALLIC CONDUIT SO THAT NM-B CABLE IS NOT EXPOSED IN CLOSET.
- PROVIDE TAMPER RESISTANT RECEPTACLES IN ALL ROOMS REQUIRED BY NEC 408.12.
- ALL 15 AND 20 AMP SINGLE PHASE BRANCH CIRCUITS SUPPLYING LIGHTS, RECEPTACLES, AND SMOKE DETECTORS WITHIN UNITS SHALL BE PROTECTED BY A LISTED "ARC FAULT CIRCUIT INTERRUPTER" BREAKER, EXCEPT CIRCUITS INCLUDE BATHROOMS, GARAGES, AND OUTDOOR RECEPTACLES.
- RECEPTACLES INSTALLED IN WET LOCATIONS SHALL BE WEATHER RESISTANT, WEATHERPROOF, AND GFCI.
- PROVIDE CONDUIT SLEEVE EXTENDING 18" ON EITHER SIDE OF FIRE WALLS FOR WIRING THAT PASSES THRU FIRE WALLS.
- VERIFY MOUNTING AND OPERATION HEIGHTS OF ALL ELECTRICAL DEVICES FOR ACCESSIBILITY WITH ARCHITECT PRIOR TO BID/ROUGH-IN.
- ANY CEILING MOUNTED DEVICE WITHIN 4" OF ANOTHER CEILING MOUNTED DEVICE, PROVIDE A METAL BOX.

### UNIT PLAN KEY NOTES (THIS SHEET ONLY)

- PROVIDE (NEMA 14-50R) RECEPTACLE W/2#6, #10G CIRCUIT FOR RANGE. PROVIDE RANGE CORD.
- PROVIDE (NEMA 5-20R) RECEPTACLE W/2#12, #12G CIRCUIT FOR RANGE HOOD/MICROWAVE.
- MOUNT UNDER CABINET, BREAK TABS, TOP RECEPTACLE SHALL BE CONTROLLED BY SWITCH FOR DISPOSAL. BOTTOM RECEPTACLE SHALL BE UNSWITCHED FOR DISHWASHER. PROVIDE 4' SO CORD WITH 3 PRONG PLUG FOR DISHWASHER AND 3' SO CORD WITH 3 PRONG PLUG FOR GARBAGE DISPOSAL. MOUNT SWITCH INSIDE BASE CABINET. PROVIDE 2 CIRCUITS AS INDICATED ON THE LOAD CENTER SCHEDULE.
- PROVIDE A (NEMA 5-20R) RECEPTACLE MTD 48" AFF WITH 2#12, #12G. FOR WASHER.
- PROVIDE A (NEMA 14-30R) RECEPTACLE MTD 48" AFF WITH 3#10, #10G CIRCUIT FOR CLOTHES DRYER. PROVIDE DRYER CORD.
- FLUSH MOUNTED LOAD CENTER (W/FLUSH MOUNT COVER, 1/2" OVERLAP); CONTRACTOR SHALL VERIFY THAT THERE IS NO PIPING AND/OR DUCTWORK INSTALLED ABOVE LOADCENTER. MOUNT TOP CIRCUIT BREAKER HANDLE AT 48" AFF. COORDINATE EXACT LOCATION AND REQUIREMENTS WITH ARCHITECT/INTERIOR DESIGNER/OWNER PRIOR TO BID/ROUGH-IN.
- PROVIDE (MINIMUM 14" X 26" FLUSH MOUNTED STRUCTURED MEDIA ENCLOSURE WITH LOCKING DOOR, TWO BRIDGED TELEPHONE BOARD AND 6 WAY 1GHz PASSIVE VIDEO SPLITTER. PROVIDE (1) CAT 6 CABLE FROM PUNCH DOWN BLOCK TO EACH DATA/TELEPHONE OUTLET (NO DASHY CHAINING) AND (1) CAT 6 CABLE FROM PUNCH DOWN BLOCK TO TELEPHONE SERVICE DEMARCATION LOCATION. PROVIDE (1) RG11 COAXIAL CABLE FROM SPLITTER TO EACH TELEVISION OUTLET (NO DASHY CHAINING) AND PROVIDE (1) RG11 COAXIAL CABLE FROM SPLITTER TO CABLE SERVICE DEMARCATION LOCATION. TERMINATE ALL CABLES ON APPROPRIATE TERMINATION POINTS. CLEARLY LABEL EACH PORT IDENTIFYING THE DESTINATION ADDRESS OF EACH CABLE. PROVIDE A MINIMUM OF 12" SLACK CABLE AT EACH OUTLET. PROVIDE (1) 20A DUPLEX RECEPTACLE MOUNTED WITHIN ENCLOSURE. MOUNT ENCLOSURE AT 36" AFF. FIELD VERIFY. SEE TELE/CAV/RISER DIAGRAM.
- PROVIDE A FAN-RATED JUNCTION BOX RECESSED FLUSH WITHIN CEILING.
- 1 SWITCH SHALL CONTROL FAN. 1 SPST OR 3 WAY SWITCH SHALL CONTROL LIGHT.
- MOUNT RECEPTACLE HORIZONTALLY WITHIN 12" OF FRONT EDGE OF COUNTER. COORDINATE WITH THE MILL WORK CONTRACTOR FOR OUTLET LOCATION WHEN NO SIDE WALL IS AVAILABLE.
- MOUNT HORIZONTALLY 4" BELOW COUNTERTOP WHERE COUNTER OVERHANG DOES NOT EXTEND MORE THAN 6". COORDINATE WITH ARCHITECT.
- CONNECT TO GFCI BRANCH CIRCUIT
- PROVIDE HUBBLE USB15A5\*\* SERIES TYPE COMBO RECEPTACLE. CIRCUIT DOWNSTREAM OF GFI-PROTECTED OUTLET IF LOCATED IN KITCHEN, WITHIN 6'-0" OF A SINK, OR NOTED AS "GFI".
- SEE 3/E1.8 FOR FAIR HOUSING OUTLET SPACING IN KITCHEN
- CONNECT TO UNIT LIGHTING BRANCH CIRCUITRY
- PROVIDE JUNCTION BOX FOR WATER HEATER.
- PROVIDE JUNCTION BOX FOR INDOOR UNIT.



1 Unit B3 - Electrical  
 Scale: 1/4" = 1'-0"  
 Plan

Seal  
  
**ZPA**  
**POOLE & POOLE ARCHITECTURE**  
 3736 Winterfield Road, Suite 102  
 Midlothian, Virginia 23113  
 Telephone 804.275.0215  
 www.zpa.net

Project: 1928  
 CADD File:  
 Drawn By: SW  
 Checked By: WM

Permit Release:  
 May 19, 2020  
 Construction Release Set:  
 May 19, 2020

Revisions  
 No. Date Description  
 1 03/19/21 Owner Comments

ASI / RFI Revisions  
 No. Date Description

Borough 33  
 an Apartment Community by  
 33 Broad MF, LLC  
 in Chattanooga, Tennessee

PRELIMINARY ENGINEERING, P.C.  
 1218 W. UNIVERSITY AVENUE  
 CHATTANOOGA, TN 37403  
 (423) 249-1111  
 www.prelim.com

Drawing Title:  
 Unit Plan

**E1.8**