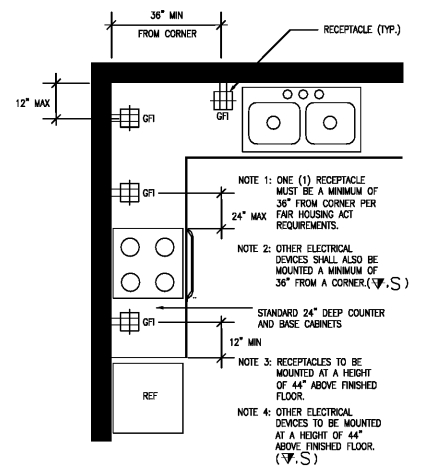


Order Plans @ www.lpdline.com

LOAD CENTER A2 HC SCHEDULE									
NO.	DESCRIPTION	LOAD (VA)	PHASE	NO.	DESCRIPTION	LOAD (VA)	PHASE	NO.	DESCRIPTION
1	Receptacle (5)	1.2	200	15	3000	2.3	200	15	2
2	Dishwasher (3)	0.7	150	3.0	3000	2.3	200	15	4
3	Refrigerator (2)	1.5	200	3.4	3000	1.9	200	15	8
4	Washer (2)	1.5	200	3.4	3000	1.9	200	15	8
5	Washer (2)	1.5	200	3.4	3000	1.9	200	15	8
6	Dishwasher (2)	1.5	200	3.4	3000	1.9	200	15	8
7	Refrigerator (2)	1.5	200	3.4	3000	1.9	200	15	8
8	Washer (2)	1.5	200	3.4	3000	1.9	200	15	8
9	Dishwasher (2)	1.5	200	3.4	3000	1.9	200	15	8
10	Refrigerator (2)	1.5	200	3.4	3000	1.9	200	15	8
11	Washer (2)	1.5	200	3.4	3000	1.9	200	15	8
12	Dishwasher (2)	1.5	200	3.4	3000	1.9	200	15	8
13	Refrigerator (2)	1.5	200	3.4	3000	1.9	200	15	8
14	Washer (2)	1.5	200	3.4	3000	1.9	200	15	8
15	Dishwasher (2)	1.5	200	3.4	3000	1.9	200	15	8
16	Refrigerator (2)	1.5	200	3.4	3000	1.9	200	15	8
17	Washer (2)	1.5	200	3.4	3000	1.9	200	15	8
18	Dishwasher (2)	1.5	200	3.4	3000	1.9	200	15	8
19	Refrigerator (2)	1.5	200	3.4	3000	1.9	200	15	8
20	Washer (2)	1.5	200	3.4	3000	1.9	200	15	8
21	Dishwasher (2)	1.5	200	3.4	3000	1.9	200	15	8
22	Refrigerator (2)	1.5	200	3.4	3000	1.9	200	15	8
23	Washer (2)	1.5	200	3.4	3000	1.9	200	15	8
24	Dishwasher (2)	1.5	200	3.4	3000	1.9	200	15	8



2 ELECTRICAL DEVICES - DWELLING UNIT KITCHEN
Scale: NOT TO SCALE

FAIR HOUSING NOTES

ALL WORK SHALL BE INSTALLED IN STRICT ACCORDANCE WITH THE HUD FAIR HOUSING ACCESSIBILITY GUIDELINES (FHAG), AND AMERICANS WITH DISABILITIES ACT ACCESSIBILITY GUIDELINES (ADAG) TITLE III.

1.1.1. LIGHT SWITCHES (WITH THE TOGGLE SWITCH IN THE "ON" POSITION) MUST NOT EXCEED A MAXIMUM OF 48" A.F.F.

1.1.2. ALL OUTLETS (POWER OR DATA) AND SWITCHES OVER THE KITCHEN AND BATHROOM COUNTERTOPS MUST NOT EXCEED A MAXIMUM OF 44" A.F.F. TO THE CENTERLINE OF THE OUTLET.

1.1.3. IN L OR U SHAPED KITCHENS, AT LEAST ONE (1) OUTLET MUST BE CENTERED A MINIMUM OF 36" FROM EACH INSIDE CORNER.

1.1.4. IN L OR U SHAPED KITCHENS, IF OTHER DEVICES ARE PLACED ON AN INSIDE CORNER, THEN THEY SHALL BE MOUNTED A MINIMUM OF 36" FROM AN INSIDE CORNER.

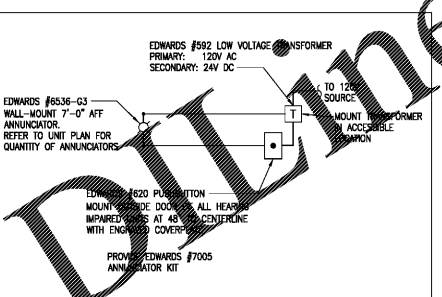
1.1.5. SIDEWALL OUTLETS AT THE VANITY COUNTERTOPS SHALL BE CENTERED A MINIMUM OF 18" FROM INSIDE WALL CORNER. IF THE OUTLETS ARE MOUNTED ON THE MIRROR WALL, THEN THE WALL OUTLET SHALL BE A MINIMUM OF 24" FROM THE INSIDE WALL CORNER TO PROVIDE A PARALLEL APPROACH.

1.1.6. WALL OUTLETS MUST BE INSTALLED A MINIMUM OF 15" A.F.F. TO THE CENTER LINE OF THE BOTTOM OUTLET.

1.1.7. TOP OF THE THERMOSTATS SHALL BE MOUNTED NO HIGHER THAN 48" A.F.F. IN ALL UNITS AND COMMON AREAS.

ADA NOTES

IN ADA RESIDENTIAL UNITS PROVIDE 110cd FIRE ALARM STROBE UNIT IN EACH LIVING ROOM AND EACH BEDROOM, AND PROVIDE 15cd STROBE UNIT IN EACH BATHROOM. SINGLE STATION SMOKE DETECTORS SHALL BE PROVIDED WITH INTEGRAL VISUAL STROBE (110cd). COORDINATE LOCATION AND QUANTITY OF ADA UNITS WITH THE ARCHITECT.



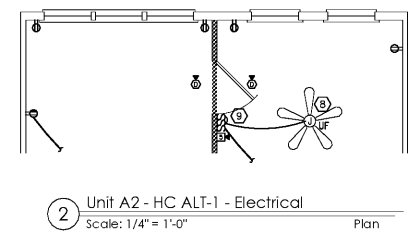
HEARING IMPAIRED DOORBELL DETAIL
Scale: NOT TO SCALE

GENERAL NOTES

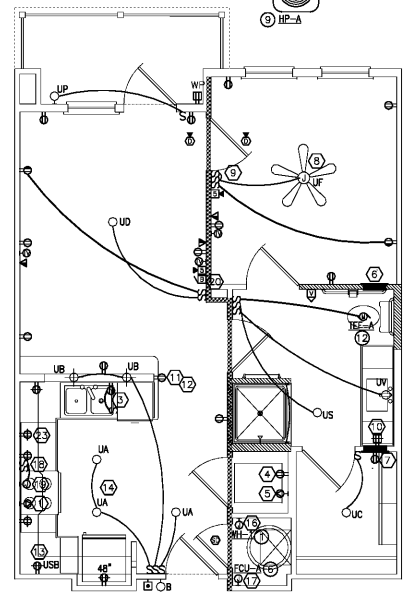
- TYPE NM WIRING FOR BRANCH CIRCUIT WIRING FOR TYPES III, IV, AND V CONSTRUCTION IF ACCEPTABLE TO LOCAL JURISDICTION HAVING AUTHORITY. PROVIDE M.C. CABLE OR WIRE/CONDUIT FOR ALL OTHER CONSTRUCTION TYPES.
- SEAL ALL OUTLET BOXES PER LOCAL ENERGY CODE.
- INTERCONNECT SMOKE DETECTORS IN INDIVIDUAL UNITS SO THAT INITIATION OF ONE WILL CAUSE INITIATION OF ALL.
- INDICATED MECHANICAL EQUIPMENT. SEE EX.XX FOR MECHANICAL CONNECTION SCHEDULE.
- OUTLET BOXES SHALL NOT BE INSTALLED WITHIN ANY WALL BACK TO BACK.
- ELECTRICAL OUTLET BOXES IN THE PARTY WALL(S), AS WELL AS INTERIOR WALLS, SHALL BE STAGGERED SO THAT THEY ARE NOT BACK-TO-BACK. PUTTY PACKS SHALL BE INSTALLED AROUND ALL BOXES. IF A SITUATION ARISES WHERE THE OUTLET BOXES MUST BE INSTALLED BACK-TO-BACK, USE A SOLID PANEL TO BLOCK NOISE TRANSMISSION BETWEEN THE BACK OF THE BOXES. IN ADDITION, USE ACOUSTICAL INSULATION BETWEEN THE SOLID BLOCKING PANEL AND THE WALL SURFACES, COMPLETELY SURROUNDING THE OUTLET BOXES.
- GFI OUTLETS SHALL NOT BE INSTALLED IN MIRRORS. COORDINATE EXACT LOCATION WITH ARCHITECT PRIOR TO ROUGH-IN.
- SINGLE STATION SMOKE/CO DETECTORS SHALL BE PHOTOVOLTAIC TYPE. PROVIDE CENTER TYPE SMOKE OR EQUAL SMOKE ALARMS FROM 120V A/C POWER SOURCE AND HAVE A BACKUP BATTERY. SMOKE ALARMS A/C POWER SHALL BE SUPPLIED BY UNSWITCHED PORTION OF 15A BEDROOM CIRCUIT. SMOKE ALARMS SHALL BE INTERCONNECTED TO ALL UNITS SO THAT INITIATION OF ONE WILL CAUSE INITIATION OF ALL. PROVIDE 72 DB(A) SMOKE DETECTOR INFORMATION.
 - INSTALLATION REGARDLESS OF LOCATION SHOWN ON DRAWINGS, INSTALL BASED ON 1-4" BELOW CEILING.
 - WALLS, CEILING AND OUTSIDE OF EVERY SLEEPING AREA AND ON ALL LEVELS OF ALL UNITS. DETECTOR SHALL BE INSTALLED WITHIN 21 FEET OF ANY DOOR TO SLEEPING ROOM.
 - SMOKE ALARMS SHALL NOT BE LOCATED WITHIN 36" HORIZONTAL PATH FROM A BATHROOM CONTAINING A SHOWER OR TUB.
 - SMOKE ALARMS SHALL NOT BE LOCATED WITHIN 36" HORIZONTAL PATH FROM SUPPLY REGISTERS OF A FORCED AIR HEATING OR COOLING SYSTEM AND SHALL BE INSTALLED OUTSIDE OF THE DIRECT AIRFLOW FROM THESE REGISTERS. COORDINATE EXACT LOCATION OF SMOKE ALARMS WITH MECHANICAL CONTRACTOR PRIOR TO ROUGH-IN.
 - SMOKE ALARMS SHALL NOT BE LOCATED WITHIN 36" HORIZONTAL PATH FROM THE TIP OF THE BLADE OF A CEILING-SUSPENDED PADDLE FAN.
- SEE ARCHITECTURAL REFLECTED CEILING PLAN FOR EXACT LOCATIONS OF LIGHTING FIXTURES.
- FINAL SELECTION, QUANTITY, AND LOCATION OF LIGHTS IN APARTMENTS TO BE COORDINATED WITH ARCHITECT AND INTERIOR PRIOR TO BID.
- TYPE NM CABLE IS NOT ALLOWED EXPOSED IN HVAC CLOSETS. PROVIDE TYPE MC CABLE OR ROUTE TYPE NM CABLE IN FLEXIBLE METALLIC CONDUIT SO THAT NM CABLE IS NOT EXPOSED IN CLOSET.
- PROVIDE TAMPER RESISTANT RECEPTACLES IN ALL ROOMS REQUIRED BY NEC 408.12.
- ALL 15 AND 20 AMP SINGLE PHASE BRANCH CIRCUITS SUPPLYING LIGHTS, RECEPTACLES, AND SMOKE DETECTORS WITHIN LIVING UNITS SHALL BE PROTECTED BY A LISTED "ARC FAULT CIRCUIT INTERRUPTER" EXCEPT CIRCUITS INCLUDE BATHROOMS, GARAGES, AND OUTDOOR RECEPTACLES.
- RECEPTACLES INSTALLED IN WET LOCATIONS SHALL BE WEATHER RESISTANT, WEATHERPROOF, AND GFCI.
- PROVIDE CONDUIT SLEEVE EXTENDING 18" ON EITHER SIDE OF FIRE WALLS FOR WIRING THAT PASSES THRU FIRE WALLS.
- VERIFY MOUNTING AND OPERATION HEIGHTS OF ALL ELECTRICAL DEVICES FOR ACCESSIBILITY WITH ARCHITECT PRIOR TO BID/ROUGH-IN.
- ANY CEILING MOUNTED DEVICE WITHIN 4' OF ANOTHER CEILING MOUNTED DEVICE, PROVIDE A METAL BOX.

UNIT PLAN KEY NOTES (THIS SHEET ONLY)

- PROVIDE (NEMA 14-50R) RECEPTACLE W/2#6, #10G CIRCUIT FOR RANGE. PROVIDE RANGE CORD.
- PROVIDE (NEMA 5-20R) RECEPTACLE W/2#12, #12G CIRCUIT FOR RANGE HOOD/MICROWAVE.
- MOUNT UNDER CABINET, BREAK TABS, TOP RECEPTACLE SHALL BE CONTROLLED BY SWITCH FOR DISPOSAL. BOTTOM RECEPTACLE SHALL BE UNSWITCHED FOR DISHWASHER. PROVIDE 4' SO CORD WITH 3 PRONG PLUG FOR DISHWASHER AND 3' SO CORD WITH 3 PRONG PLUG FOR GARBAGE DISPOSAL. MOUNT SWITCH INSIDE BASE CABINET. PROVIDE 2 CIRCUITS AS INDICATED ON THE LOAD CENTER SCHEDULE.
- PROVIDE A (NEMA 5-20R) RECEPTACLE MTD 48" AFF WITH 2#12, #12G. FOR WASHER.
- PROVIDE A (NEMA 14-30R) RECEPTACLE MTD 48" AFF WITH 3#10, #10G CIRCUIT FOR CLOTHES DRYER. PROVIDE DRYER CORD.
- FLUSH MOUNTED LOAD CENTER (W/FLUSH MOUNT COVER, 1/2" OVERLAP); CONTRACTOR SHALL VERIFY THAT THERE IS NO PIPING AND/OR DUCTWORK INSTALLED ABOVE LOADCENTER. MOUNT TOP CIRCUIT BREAKER HANDLE AT 48" AFF. COORDINATE EXACT LOCATION AND REQUIREMENTS WITH ARCHITECT/INTERIOR DESIGNER.
- PROVIDE (MINIMUM 14" X 28" FLUSH MOUNTED STRUCTURED MEDIA ENCLOSURE WITH LOCKING DOOR, 1/2" BRIDGED TELEPHONE BOARD AND 8 WAY 10dB PASSIVE VIDEO SPLITTER. PROVIDE (1) CAT 6 CABLE FROM PUNCH DOWN BLOCK TO EACH DATA/TELEPHONE OUTLET (NO DASHY CHAINING) AND (1) CAT 6 CABLE FROM PUNCH DOWN BLOCK TO TELEPHONE SERVICE DEMARCATION LOCATION. PROVIDE (1) RG11 COAXIAL CABLE FROM SPLITTER TO EACH TELEVISION OUTLET (NO DASHY CHAINING) AND PROVIDE (1) RG11 COAXIAL CABLE FROM SPLITTER TO CABLE SERVICE DEMARCATION LOCATION. TERMINATE ALL CABLES ON APPROPRIATE TERMINATION POINTS. CLEARLY LABEL EACH PORT IDENTIFYING THE DESTINATION ADDRESS OF EACH CABLE. PROVIDE A MINIMUM OF 12" SLOAK CABLE AT EACH OUTLET. PROVIDE (1) 20A DUPLEX RECEPTACLE MOUNTED WITHIN ENCLOSURE. MOUNT ENCLOSURE AT 36" AFF. FIELD VERIFY. SEE TELE/CAV/RISER DIAGRAM.
- PROVIDE A FAN-RATED JUNCTION BOX RECESSED FLUSH WITHIN CEILING.
- 1 SWITCH SHALL CONTROL FAN. 1 SPST OR 3 WAY SWITCH SHALL CONTROL LIGHT.
- MOUNT RECEPTACLE HORIZONTALLY WITHIN 12" OF FRONT EDGE OF COUNTER. COORDINATE WITH THE MILL WORK CONTRACTOR FOR OUTLET LOCATION WHEN NO SIDE WALL IS AVAILABLE.
- MOUNT HORIZONTALLY 4" BELOW COUNTERTOP WHERE COUNTER OVERHANG DOES NOT EXTEND MORE THAN 6". COORDINATE WITH ARCHITECT.
- CONNECT TO GFCI BRANCH CIRCUIT
- PROVIDE HUBBLE USB15A5+ SERIES TYPE COMBO RECEPTACLE, CIRCUIT DOWNSTREAM OF GFI--PROTECTED OUTLET IF LOCATED IN KITCHEN, WITHIN 6'-0" OF A SINK, OR NOTED AS "GFI".
- SEE 2/E1.3 FOR FAIR HOUSING OUTLET SPACING IN KITCHEN
- CONNECT TO UNIT LIGHTING BRANCH CIRCUITRY
- PROVIDE JUNCTION BOX FOR WATER HEATER.
- PROVIDE JUNCTION BOX FOR INDOOR UNIT.
- MOUNT SWITCHES 8" ABOVE COUNTER TOP. ONE SWITCH SHALL CONTROL RANGE HOOD FAN. ONE SWITCH SHALL CONTROL RANGE HOOD LIGHT.
- PROVIDE JUNCTION BOX W/2#12, #12G CIRCUIT FOR RANGE HOOD
- DOOR BELL AUDIO/VISUAL DEVICE.
- DOOR BELL PUSH BUTTON. MOUNT 48" AFF.
- SEE 3/E1.3 FOR HEARING IMPAIRED UNIT.
- PROVIDE (NEMA 5-20R) RECEPTACLE W/2#12, #12G CIRCUIT FOR MICROWAVE.



Unit A2 - HC ALT-1 - Electrical
Scale: 1/4" = 1'-0"



Unit A2 - HC - Electrical
Scale: 1/4" = 1'-0"

Seal

ZPA
POOLE & POOLE ARCHITECTURE
3736 Winterfield Road, Suite 102
Midlothian, Virginia 23113
Telephone 804.275.0215
www.zpa.net

Project: 1928
CADD File:
Drawn By: SW
Checked By: WM

Permit Release:
May 19, 2020
Construction Release Set:
May 19, 2020

Revisions
No. Date Description
1 03/19/21 Owner Comments

ASI / RFI Revisions
No. Date Description

© 2019 Poole & Poole Architecture, LLC
No warranty is made for the use of these drawings and specifications for any purpose other than that intended by the architect. The user assumes all liability for any and all consequences of any use of these drawings and specifications for any purpose other than that intended by the architect.

PRELIMINARY
ENGINEERING, P.C. 03/19/2021
Michael C. Poole
00198
03/19/2021

Borough 33
an Apartment Community by
33 Broad MF, LLC
in Chattanooga, Tennessee

Drawing Title:
Unit Plan

E1.3