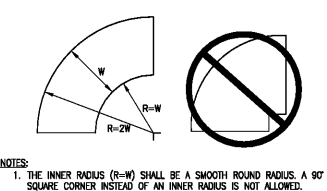


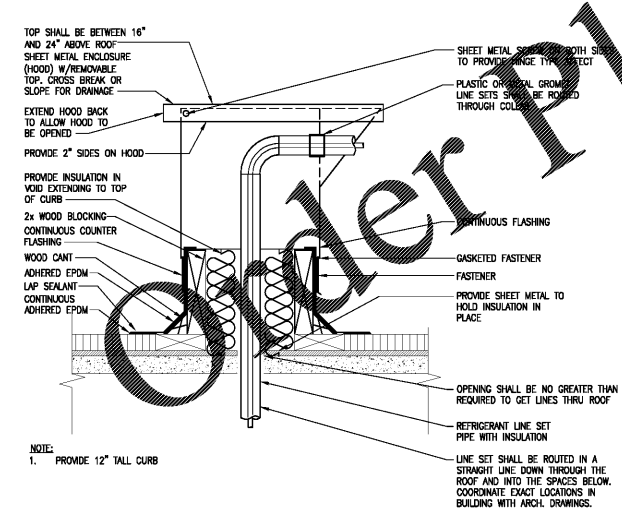
COMMON AREAS:
MECHANICAL VENTILATION CALCULATIONS
PER 2012 IMC TABLE 403.3 (SEE NOTE 1)

ROOM/SPACE	OCCUPANCY CLASSIFICATION	AREA (SQ.FT.)	OCCUPANCY	CFM PER PERSON	CFM/SQ.FT.	TOTAL CFM	TOTAL OA CFM
BUILDING 1 1ST LEVEL CORRIDOR A	CORRIDOR	1106	---	---	0.06	66	70
BUILDING 1 1ST LEVEL CORRIDOR B	CORRIDOR	970	---	---	0.06	58	60
BUILDING 1 1ST LEVEL CORRIDOR C	CORRIDOR	537	---	---	0.06	32	40
BUILDING 1 2ND LEVEL CORRIDOR A	CORRIDOR	1282	---	---	0.06	77	80
BUILDING 1 2ND LEVEL CORRIDOR B	CORRIDOR	1630	---	---	0.06	98	110
BUILDING 1 3RD LEVEL CORRIDOR A	CORRIDOR	1282	---	---	0.06	77	80
BUILDING 1 3RD LEVEL CORRIDOR B	CORRIDOR	1630	---	---	0.06	98	110
BUILDING 1 4TH LEVEL CORRIDOR A	CORRIDOR	1282	---	---	0.06	77	80
BUILDING 1 4TH LEVEL CORRIDOR B	CORRIDOR	1630	---	---	0.06	98	110
BUILDING 2 1ST LEVEL CORRIDOR A	CORRIDOR	1106	---	---	0.06	66	70
BUILDING 2 1ST LEVEL CORRIDOR B	CORRIDOR	970	---	---	0.06	58	60
BUILDING 2 1ST LEVEL CORRIDOR C	CORRIDOR	537	---	---	0.06	32	40
BUILDING 2 2ND LEVEL CORRIDOR A	CORRIDOR	1282	---	---	0.06	77	80
BUILDING 2 2ND LEVEL CORRIDOR B	CORRIDOR	1630	---	---	0.06	98	110
BUILDING 2 3RD LEVEL CORRIDOR A	CORRIDOR	1282	---	---	0.06	77	80
BUILDING 2 3RD LEVEL CORRIDOR B	CORRIDOR	1630	---	---	0.06	98	110
BUILDING 2 4TH LEVEL CORRIDOR A	CORRIDOR	1282	---	---	0.06	77	80
BUILDING 2 4TH LEVEL CORRIDOR B	CORRIDOR	1630	---	---	0.06	98	110
BUILDING 3 1ST LEVEL CORRIDOR A	CORRIDOR	734	---	---	0.06	44	50
BUILDING 3 1ST LEVEL CORRIDOR B	CORRIDOR	615	---	---	0.06	37	45
BUILDING 3 2ND LEVEL CORRIDOR	CORRIDOR	1365	---	---	0.06	82	90
BUILDING 3 3RD LEVEL CORRIDOR	CORRIDOR	1365	---	---	0.06	82	90
BUILDING 3 4TH LEVEL CORRIDOR	CORRIDOR	1365	---	---	0.06	82	90
TOTAL - CLUB ROOM EQU-SLO	RECEPTION AREA	1598	48	5	0.06	338	350
MICRO OFFICE 1	OFFICE SPACE	82	1	5	0.06	10	---
MICRO OFFICE 2	OFFICE SPACE	81	1	5	0.06	10	---
OFFICE 1	OFFICE SPACE	130	1	5	0.06	13	---
OFFICE 2	OFFICE SPACE	130	1	5	0.06	13	---
WORK ROOM	OFFICE SPACE	167	1	5	0.06	15	---
MAINTENANCE	OFFICE SPACE	120	1	5	0.06	10	---
TOTAL - CLUBHOUSE EQU-2LS	---	---	---	---	---	71	225
GAME ROOM	RECEPTION AREA	439	14	5	0.06	97	---
PARCEL ROOM	STORAGE	187	---	---	0.12	23	---
TOTAL - CLUBHOUSE EQU-2LS	---	---	---	---	---	120	125
MAIL ROOM	STORAGE	785	---	---	0.12	95	---
CONFERENCE ROOM	CONFERENCE	170	9	5	0.06	55	---
LOBBY	LOBBIES/PREFUNCTION	1138	35	7.5	0.06	331	---
TOTAL - CLUBHOUSE EQU-SLO	---	---	---	---	---	481	490
FITNESS	HEALTH CLUB/WEIGHT ROOM	859	9	20	0.06	232	---
DOG WASH	PET SHOPS	277	3	7.5	0.18	72	---
TOTAL - FITNESS EQU-SLO	---	---	---	---	---	304	1010
TOTAL - FITNESS EQU-3LS	HEALTH CLUB/WEIGHT ROOM	1329	14	20	0.06	380	375
TOTAL - SPIN/YOGA EQU-SLO	HEALTH CLUB/AEROBICS ROOM	353	15	20	0.06	322	350

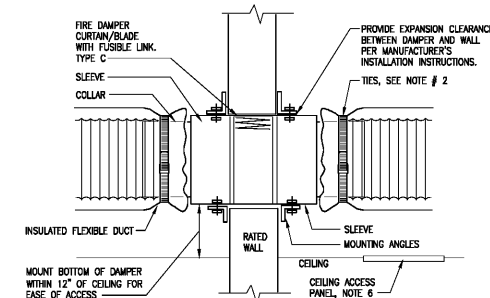
NOTES:
1. THE MECHANICAL VENTILATION HAS BEEN DESIGNED IN COMPLIANCE WITH THE 2012 INTERNATIONAL MECHANICAL CODE. OCCUPANCY IS BASED ON THE DEFAULT OCCUPANCY DENSITY PROVIDED BY 2012 IMC TABLE 403.3.



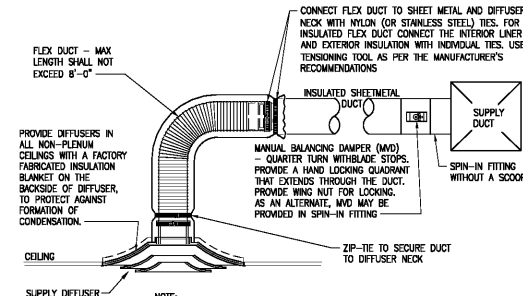
5 RECTANGULAR DUCT RADIUS ELBOW
Scale: None



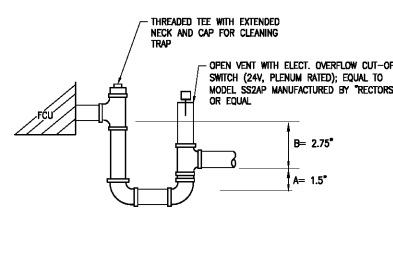
8 ROOF PENETRATION FOR REFRIGERANT LINE SETS
Scale: None



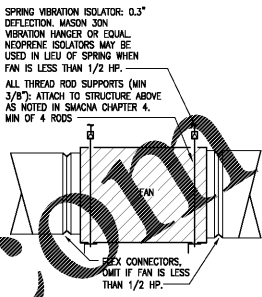
1 ROUND DUCT FIRE DAMPER DETAIL
Scale: None



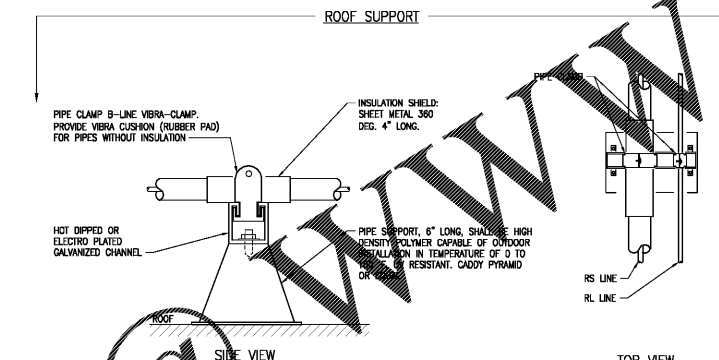
2 DUCT TAKE-OFF
Scale: None



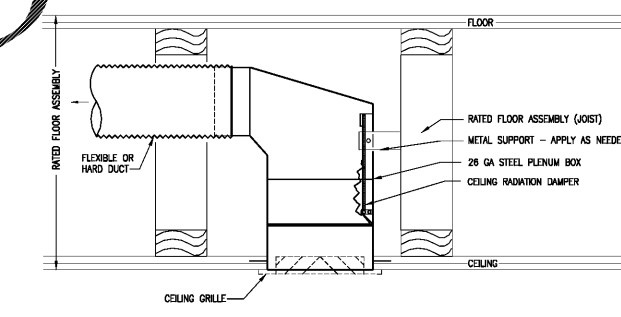
3 FCU CONDENSATE DRAIN TRAP DETAIL
Scale: None



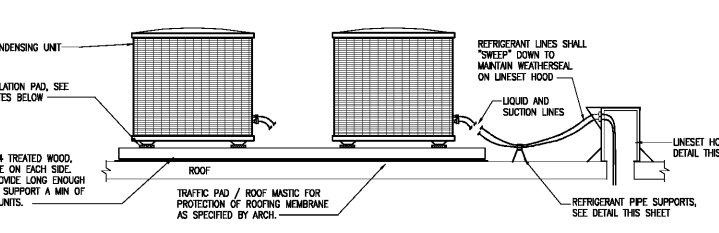
4 HORIZONTAL FAN DETAIL
Scale: None



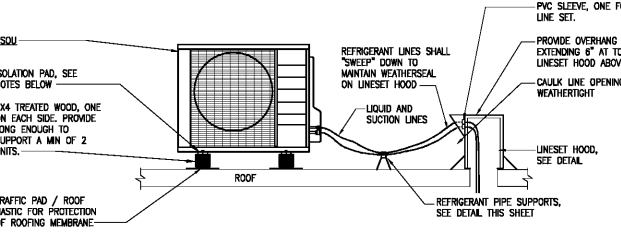
6 REFRIGERANT PIPE SUPPORTS
Scale: None



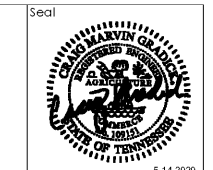
7 CEILING RADIATION DAMPER (CRD) DETAIL
Scale: None



9 CONDENSING/HP UNIT MOUNTING ON ROOF
Scale: None



10 DUCTLESS SPLIT OUTDOOR UNIT MOUNTING ON ROOF
Scale: None



ZPA
POOLE & POOLE ARCHITECTURE
3736 Winterfield Road, Suite 102
Midlothian, Virginia 23113
Telephone 804.275.0215
www.zpa.net

Project: 1928
CADD File:
Drawn By: NT
Checked By: CB
Permit Release:
May 15, 2020
Construction Release Set:
May 15, 2020
Revisions
No. Date Description

ASI / RFI Revisions
No. Date Description

© 2018 Poole & Poole Architects, LLC
Engineering and specifications are the sole work product of Poole & Poole Architects, LLC and shall not be used for any other project without the written consent of Poole & Poole Architects, LLC.
PROJECTS GRADICK ENGINEERING, P.A. 1118 S. BROADWAY, SUITE 200, CHATTANOOGA, TN 37402
The bearing, seal, or stamp of a professional engineer or architect is required for the use of these drawings for any project other than that for which they were prepared. The professional seal and stamp of the engineer or architect are required for the use of these drawings for any project other than that for which they were prepared.

Borough 33
an Apartment Community by
33 Broad MF, LLC
in Chattanooga, Tennessee

Drawing Title:
Mechanical Schedule
And Detail

M0.2