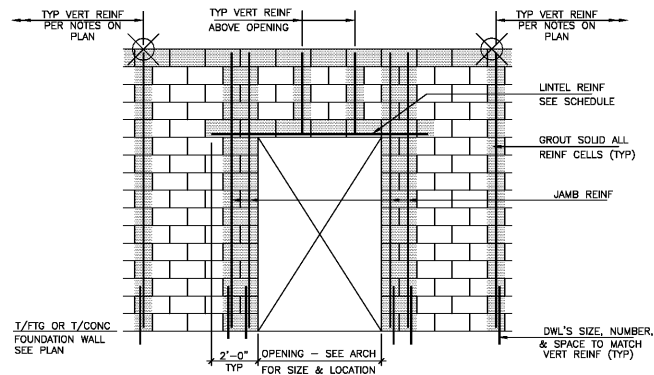


BAR SIZE	SPLICE LENGTH
#3	18"
#4	24"
#5	30"
#6	43"
#7	60"

GROUTING PROCEDURE

- CONSTRUCT CMU WALL AND ALLOW MORTAR TO SET SUFFICIENTLY TO WITHSTAND GROUT PRESSURE.
- INSPECT UNITS FOR ALIGNMENT, CLEAN OUT CELLS TO BE FILLED.
- PLACE GROUT IN LIFTS NOT EXCEEDING 5'-0" UNTIL CELLS HAVE BEEN FILLED WITHIN 1/2" OF TOP OF WALL (FOR BOND BEAMS).
- DELAY 3 TO 5 MINUTES PRIOR TO CONSOLIDATING EA GROUT LIFT TO ALLOW WATER TO BE ABSORBED BY MASONRY.

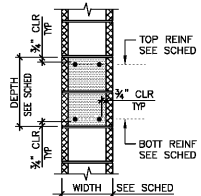


TYP WALL ELEVATION @ DOORWAY

NOTE: 1. TYP BOND BEAM REINF NOT SHOWN FOR CLARITY.

1 TYP CMU WALL
S9.1 SCALE: 3/4"=1'-0"

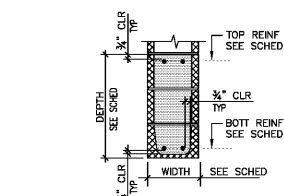
CMU WALL VERTICAL REINF SCHEDULE		
ELEVATOR SHAFT WALLS		
MAX FLR TO FLR HGT	WALL WIDTH	VERTICAL REINFORCING
15'-0"	8"	#5@32" OC CENTERED IN CELL
STAIRWELL WALLS		
MAX FLR TO FLR HGT	WALL WIDTH	VERTICAL REINFORCING
15'-0"	8"	#5@32" OC CENTERED IN CELL
INTERIOR WALLS NOT EXPOSED TO WIND		
MAXIMUM CLR HGT	WALL WIDTH	VERTICAL REINFORCING
19'-0"	8"	#5@32" OC CENTERED IN CELL
21'-0"	8"	#6@16" OC CENTERED IN CELL
24'-0"	12"	#5@32" OC CENTERED IN CELL
EXTERIOR WALLS EXPOSED TO WIND		
MAXIMUM CLR HGT	WALL WIDTH	VERTICAL REINFORCING
15'-0"	8"	#5@32" OC CENTERED IN CELL
17'-0"	8"	#5@16" OC CENTERED IN CELL
19'-0"	8"	#7@16" OC CENTERED IN CELL
22'-0"	12"	#5@24" OC CENTERED IN CELL
24'-0"	12"	#5@16" OC CENTERED IN CELL



CMU BOND BEAM SCHEDULE				
CLEAR SPAN	BEAM DEPTH	BEAM WIDTH	REINF (BOT)	REINF (TOP)
UP TO 4'-0"	16"	8"	2 #5	2 #5
4'-1" TO 6'-0"	24"	8"	2 #6	2 #5

BOND BEAM NOTES

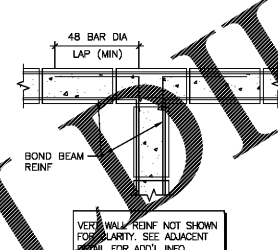
- SEE TYP CMU WALL INTERSECTION AND CORNER DETAILS FOR ADDITIONAL INFO.
- PROVIDE CMU BOND BEAM AT BLDG FLOOR AND ROOF ELEV'S, STAIR LANDINGS (BOTH INTERMEDIATE AND FLOOR LEVEL) AND ALONG TOP OF WALL. SEE ARCH DRAWINGS FOR EXACT HGT ELEV'S.



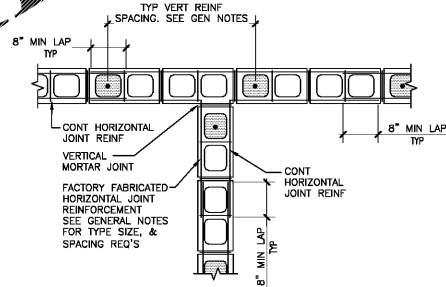
CMU LINTEL SCHEDULE				
CLEAR SPAN	LINTEL DEPTH	LINTEL WIDTH	REINF (BOT)	REINF (TOP)
UP TO 4'-0"	16"	8"	2 #5	2 #5
4'-1" TO 6'-0"	24"	8"	2 #6	2 #5

LINTEL SCHEDULE NOTES

- SEE 1 & 1A/S9.1 FOR TYP WALL REINF INFO.
- PROVIDE CMU LINTELS FOR ALL OPENINGS IN CMU WALLS FOR WHICH STEEL LINTELS ARE NOT SCHEDULED. PROVIDE 8" MINIMUM BEARING AT EACH END. SEE ARCH DRAWINGS FOR EXACT SIZE AND LOCATION OF ALL OPENINGS.

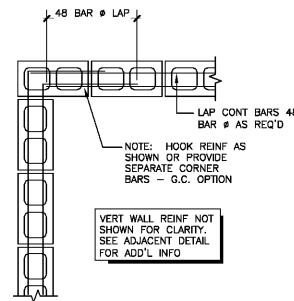


BOND BEAMS



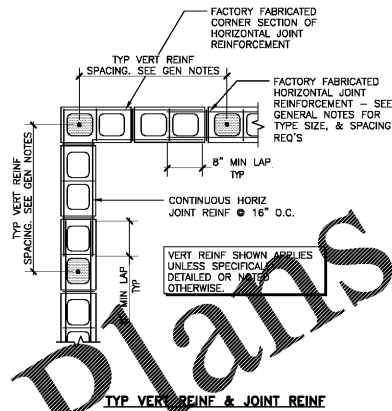
TYP VERT REINF & JOINT REINF

1A TYP CMU WALL REINFORCEMENT INFO
S9.1 SCALE: 3/4"=1'-0"



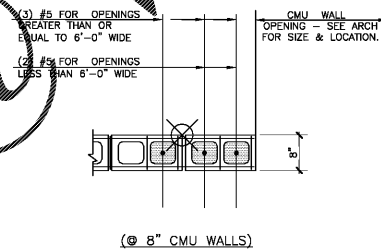
BOND BEAMS

2A TYP CMU BOND BEAM
S9.1 SCALE: 3/4"=1'-0"



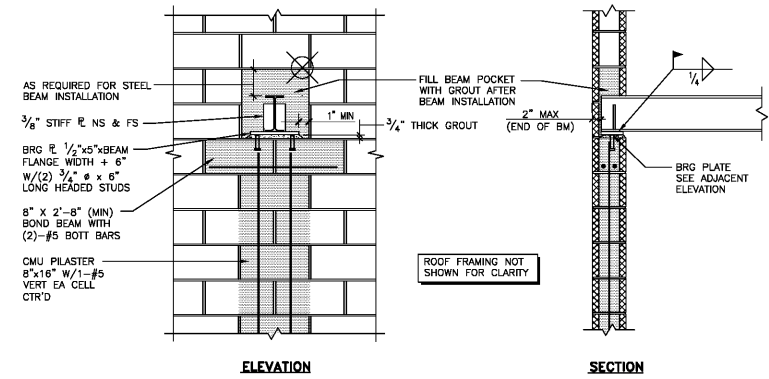
TYP VERT REINF & JOINT REINF

2B TYP CMU LINTEL DETAIL & SCHEDULE
S9.1 SCALE: 3/4"=1'-0"



(@ 8" CMU WALLS)

3 TYP CMU WALL INTERSECTIONS
S9.1 SCALE: 3/4"=1'-0"



ELEVATION

SECTION

4 TYP CMU WALL CORNERS
S9.1 SCALE: 3/4"=1'-0"

5 TYP CMU JAMB/END
S9.1 SCALE: 3/4"=1'-0"

6 STL BEAM BRG ON CMU WALL
S9.1 SCALE: 3/4"=1'-0"

Seal

ZPA
PEOPLE & PURPOSE ARCHITECTURE
5736 Westchester Road, Suite 100
Marietta, GA 30067
Phone: 770.423.4214
www.zpa.net
INC ESTD 1972

DAVIS & CHURCH
STRUCTURAL ENGINEERS
7905 Westside Pkwy, Ste. 200
Atlanta, GA 30309
(770) 412-1213

Project: 1928.00
CADD File:
Drawn By: AVG
Checked By: TQ
Permit Release:
May 15, 2020
Construction Release Set:
May 15, 2020
Revisions
No. Date Description
AS/RFI Revisions
No. Date Description
© 2019 Peck & Peck Architecture, LLC
Drawings and specifications are the property of Peck & Peck Architecture, LLC and shall not be used or reproduced in whole or part in any form without prior written consent of Peck & Peck Architecture, LLC.

Borough 33
an Apartment Community by
33 Broad MF, LLC
in Chattanooga, Tennessee

Drawing Title:
TYPICAL CMU WALL
SECTIONS & DETAILS

S9.1

Order Plans

WWW.IDILine.com

ISSUED FOR CONSTRUCTION