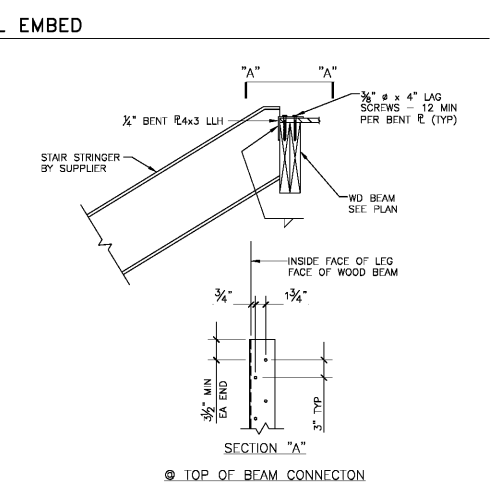
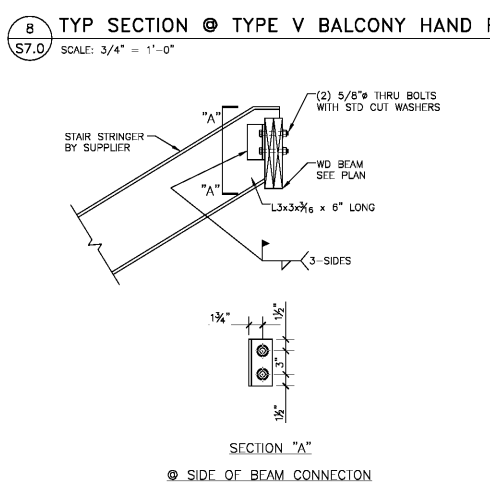
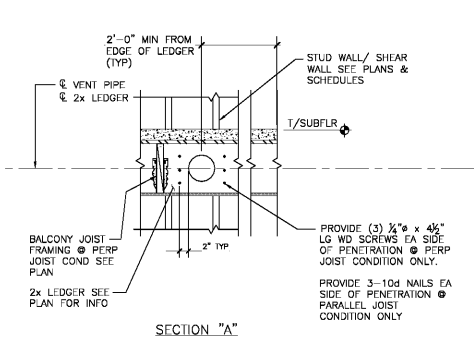
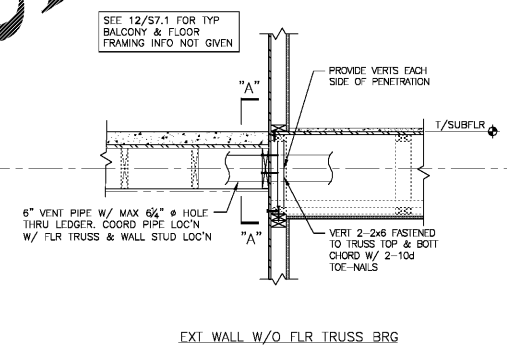
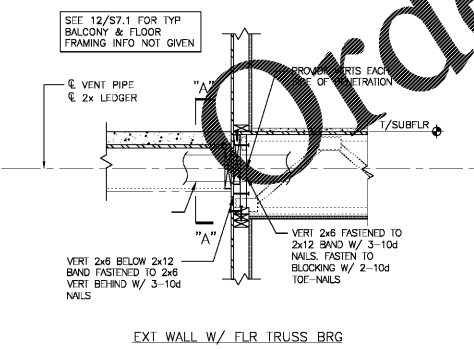
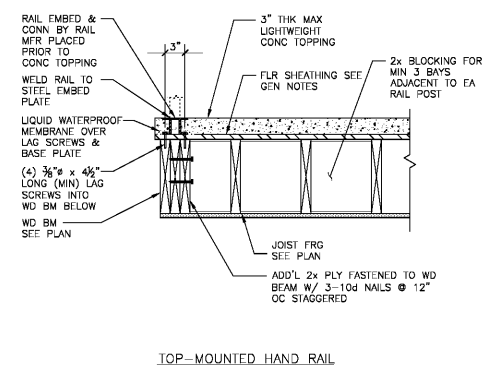
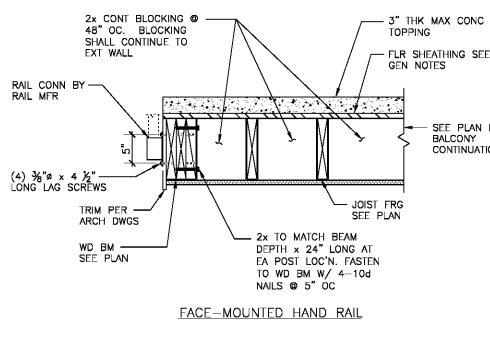


SCHED STUD COLUMN	MAX HOLE Ø IN STUDPACK	# HOLES/ STUD COL	HOLE-TO-HOLE SPACING	END DIST (TOP & BOT)	ADD'L STUDS REQ'D	NOTCH DIMENSION
4-2x4	3/4" 1 1/2"	4 1	6"	12" 24" 24"	0 2 4	7/8"
3-2x4	3/4" 1 1/2"	4 1	6"	12" 24" 24"	0 2 3	7/8"
2-2x4	3/4" 1 1/2"	4 1	6"	12" 24" 24"	0 1 2	7/8"
1-2x4	3/4" 1 1/2"	4 1	6"	12" 24" 24"	0 1 1	7/8"
4-2x6	3/4" 2" 3"	4 2 1	6" 24"	12" 24" 24"	0 2 4	1 3/8"
3-2x6	3/4" 2" 3"	4 2 1	6" 24"	12" 24" 24"	0 1 3	1 3/8"
2-2x6	3/4" 2" 3"	4 2 1	6" 24"	12" 24" 24"	0 1 2	1 3/8"
1-2x6	3/4" 2" 3"	4 2 1	6" 24"	12" 24" 24"	0 1 1	1 3/8"

NOTES:
1. LAMINATE ADDITIONAL STUDS TO EXISTING STUD COLUMN PER PLY LAMINATION REQUIREMENTS ON S4.0C.



Seal

ZPA
POMER & POMER ARCHITECTURE
5736 Westside Parkway, Suite 100
Alpharetta, GA 30009
Phone: 770.223.1212
Fax: 770.223.1212
E-MAIL: zpa@zpa.com

DAVIS
CHURCH
STRUCTURAL ENGINEERS
7905 Westside Parkway, Ste. 200
Alpharetta, GA 30009
(770) 412-1213

Project: 1920-038
CADD File:
Drawn By: AVG
Checked By: TQ
Permit Release:
May 15, 2020
Construction Release Set:
May 15, 2020
Revisions
No. Date Description

ASI / RFI Revisions
No. Date Description

Borough 33
an Apartment Community by
33 Broad MF, LLC
in Chattanooga, Tennessee

Drawn Title:
GENERAL FLOOR FRAMING
SECTIONS AND DETAILS

S7.0

ISSUED FOR CONSTRUCTION