

**BUILDING #1**

STACKS	1-116	1-127	1-132
ROOF			
LEVEL 4	S1	B1	S1
LEVEL 3	S1	B1	S1
LEVEL 2	S1	B1	S1
LEVEL 1	S1	B1-TYPEA	S1
REF PLAN #	2/S4.5	1/S4.5	2/S4.5

**BUILDING #2**

STACKS	2-116	2-127	2-132
ROOF			
LEVEL 4	S1	B1	S1
LEVEL 3	S1	B1	S1
LEVEL 2	S1	B1	S1
LEVEL 1	S1	B1-TYPEA	S1
REF PLAN #	2/S4.5	1/S4.5	2/S4.5

**BUILDING #3**

STACKS	3-108	3-113
ROOF		
LEVEL 4	A2-ALT1	S1
LEVEL 3	A2-ALT1	S1
LEVEL 2	A2-ALT1	S1
LEVEL 1	A2-ALT1	S1
REF PLAN #	3/S4.5	2/S4.5

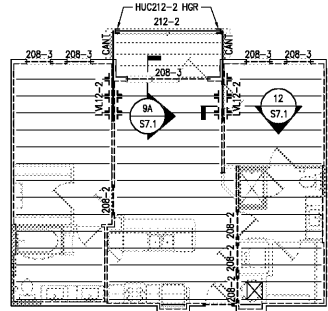
**UNIT FLOOR & WALL FRAMING PLAN NOTES:**

- FLOOR FRAMING SHALL BE AS FOLLOWS:
  - ALL FLOOR FRAMING SHALL BE 18" DEEP PRE-ENGINEERED OPEN WEB TRUSSES @ 24" O.C. UNO.
  - BALCONY JOIST FRAMING SHALL BE AS FOLLOWS:
    - PIL 2x10 @ 16" OC UP TO 8'-9" CLEAR SPAN
    - PIL 2x10 @ 12" OC UP TO 10'-3" CLEAR SPAN
    - PIL 2-2x10 @ 16" OC UP TO 12'-5" CLEAR SPAN
    - PIL 2-2x10 @ 12" OC UP TO 14'-3" CLEAR SPAN
- THE MIN. NUMBER OF WALL STUDS AT BEARING POINTS SHALL BE (SEE BUILT-UP COL. SCHEDULE ON S4.0 FOR ADD'L INFO.):
  - BUILT-UP MULTI-PLY FLUSH BEAMS: SEE 13/S7.1 FOR ADDITIONAL INFORMATION (SAWN LUMBER AND LVL) (3 STUDS MIN)
  - GIRDER TRUSSES (3 STUDS MIN) UNO ON PLAN
  - SHALL MATCH THE NUMBER OF PLYS OF THE GIRDER TRUSSES (3 STUDS MIN) UNO ON PLAN SEE JAMB/KING STUD SCHEDULE
- HEADERS/DROP BEAMS:
  - THE CENTERLINE OF THE BEAM OR GT SHALL MATCH THE CENTERLINE OF THE SUPPORTING WALL STUDS.
  - ALL COL'S, INCLUDING STUD PACKS, MUST ALIGN FLOOR-TO-FLOOR WITH SOLID BLOCKING OF THE SAME SIZE AND DIMENSION AS THE COL ABOVE, AT FLOOR CAVITY LOCATIONS. CONTINUE TO FDN OR BEAM SUPPORT BELOW.
- SEE S7.0a FOR ALLOWABLE WALL PLATE & STUD PENETRATIONS.
- SEE S7.0b FOR GENERAL SECTIONS AT BALCONY LEDGER PENETRATION, BALCONY GUARDRAIL ATTACHMENT AND FLOOR & STUD FRAMING AT WASHER BOX.
- WHERE STUD ALIGNMENT IS REQUIRED, SEE 2/S7.0 FOR ALLOWABLE OFFSET DISTANCE BETWEEN FLOOR TRUSS FRAMING AND WALL STUDS.
- SEE ARCH DWGS FOR EXACT FINISHED FLOOR ELEVATIONS.
- SEE GENERAL NOTES FOR LUMBER SPECIES AND GRADE REQS.
- ALL CONNECTOR TYPES REFER TO SIMPSON STRONG-TIE SPECIFICATIONS UNO. SEE GENERAL NOTES FOR ADD'L INFO.

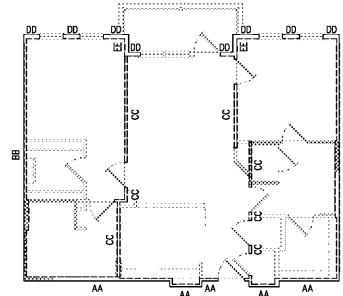
- SEE 1/S7.3 FOR TYPICAL WOOD OR STEEL BEAM TO BEAM AND BEAM TO HSS COLUMN CONNECTIONS NOT IDENTIFIED ON PLAN.
- EXTENTS OF WALL TYPE TAGS ARE FROM ONE INTERSECTING-WALL/WALL-CORNER/WALL-OPENING TO THE NEXT INTERSECTING-WALL/WALL-CORNER/WALL-OPENING UNO.
- DO NOT CORE BEAMS OR HEADERS UNLESS SPECIFIED BY EOR.
- SEE S0.# SERIES FOR GENERAL NOTES
- SEE S2.# SERIES FOR FLOOR FRAMING (STACK) PLANS
- SEE S2.#X SERIES FOR FLOOR BRACING PLANS
- SEE S3.# SERIES FOR ROOF FRAMING PLANS
- SEE S4.0a-b FOR SHEARWALL/ANCHORAGE INFORMATION
- SEE S4.0c FOR STUDWALL/BUILT UP COL SCHEDULE
- SEE S4.# SERIES FOR INDIVIDUAL UNIT FRAMING PLANS
- SEE S6.# SERIES FOR FOUNDATION/RETAINING WALL DETAILS
- SEE S7.# SERIES FOR FLOOR FRAMING DETAILS
- SEE S8.# SERIES FOR ROOF FRAMING DETAILS
- SEE S9.# SERIES FOR MASONRY DETAILS
- SEE S10.#X SERIES FOR CLUB/FITNESS/VERANDA/GARAGE/TRASH ENCLOSURE PLANS
- SEE S10.#X SERIES FOR CLUB/FITNESS/VERANDA/GARAGE/TRASH ENCLOSURE BRACING PLANS

**UNIT FLOOR & WALL FRAMING PLAN LEGEND**

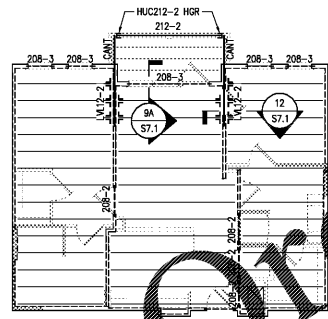
- 210-2 DENOTES WOOD BEAM/HEADER DESIGNATION. SEE BEAM/HEADER SCHEDULE ON S4.0c FOR ADD'L INFO.
- BC4 DENOTES BUILT-UP COLUMN DESIGNATION. SEE BUILT-UP COL. SCHEDULE ON S4.0c FOR ADD'L INFO.
- GT DENOTES GIRDER TRUSS LOCATION.
- 2K/1J DENOTES QUANTITY OF KING STUDS (K) & JAMB STUDS (J) PER HEADER END. SEE S4.0c FOR STUD INFO.
- Denotes LOCATION OF MECH DUCT PENETRATION THRU CEILING. TRUSS SUPPLIER SHALL COORDINATE LOCATION OF TRUSSES W/PENETRATION. SEE ARCH DWGS FOR EXACT LOCATION.
- 6X" DENOTES DISTANCE FROM TOP OF BEAM FLANGE TO TOP OF SUBFLOOR. SEE 7/S7.0 FOR ADD'L INFO.
- Denotes APPLICABLE BEAM OR BEAM OR BEAM TO COLUMN CONNECTION DETAIL PER S7.3.
- Denotes FLUSH BEAM WITH BOTTOM OF BEAM AT FLOOR BEARING.
- Denotes HEADER WITHIN WALL FRAMING ABOVE OPENING.
- Denotes CONTINUOUS, UNINTERRUPTED HEADER. USE KING/JAMB STUD QUANTITY CORRESPONDING TO FULL WIDTH OF HEADER ROUGH OPENING.
- Denotes LOAD-BEARING WALL TYPE. SEE S4.0c FOR WALL FRAMING SCHEDULE & ADDITIONAL INFO.
- Denotes MOMENT FRAME CONNECTION. SEE 2/S7.3



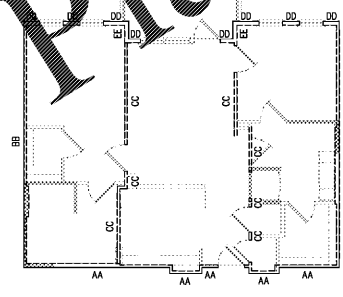
**UNIT B1  
FLOOR FRAMING PLAN**



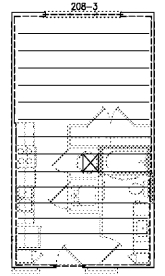
**UNIT B1  
WALL FRAMING PLAN**



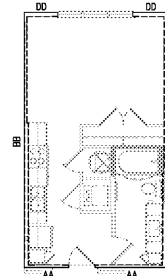
**UNIT B1 TYPE A  
FLOOR FRAMING PLAN**



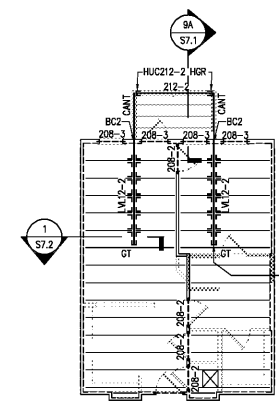
**UNIT B1 TYPE A  
WALL FRAMING PLAN**



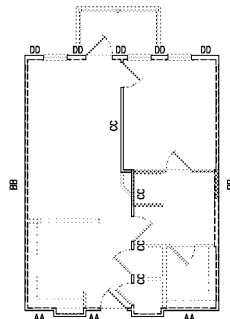
**UNIT S1  
FLOOR FRAMING PLAN**



**UNIT S1  
WALL FRAMING PLAN**



**UNIT A2-ALT1  
FLOOR FRAMING PLAN**

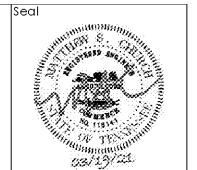


**UNIT A2-ALT1  
WALL FRAMING PLAN**

1 STACK # 1-127  
S4.5 SCALE: 1/8" = 1'-0"  
2-127

2 STACK # 1-116 1-132  
S4.5 SCALE: 1/8" = 1'-0"  
2-116 2-132  
3-113

3 STACK # 3-108  
S4.5 SCALE: 1/8" = 1'-0"



**ZPA**  
POWELL & POWELL ARCHITECTURE  
5736 Westchester Road, Suite 100  
Memphis, Tennessee 38113  
Tel: 901.725.4214  
www.zpa.net  
INC EST. 1972

**DAVIS & CHURCH**  
STRUCTURAL ENGINEERS  
7905 Westside Parkway, Ste. 200  
Alpharetta, GA 30009  
(770) 462-1212

Project: 1928.00  
CADD File:  
Drawn By: AVG  
Checked By: TQ

Permit Release:  
May 15, 2020  
Construction Release Set:  
May 15, 2020

Revisions	No.	Date	Description

ASI / RFI Revisions

No.	Date	Description

© 2019 Powell & Powell Architecture, LLC  
Drawings and specifications are the property of Powell & Powell Architecture, LLC and shall not be used or reproduced in whole or part in any form without prior written consent of Powell & Powell Architecture, LLC.

**Borough 33**  
an Apartment Community by  
33 Broad MF, LLC  
in Chattanooga, Tennessee

Drawing Title:  
Unit Floor & Wall  
Framing Plans

**S4.5**

ISSUED FOR CONSTRUCTION