

BUILDING #1

STACKS	1-111	1-118	1-122	1-128	1-130	1-137
ROOF						
LEVEL 4	B2	A1	A1-ALT1	A1	A1	B2
LEVEL 3	B2	A1	A1-ALT1	A1	A1	B2
LEVEL 2	B2	A1	A1-ALT1	A1	A1	B2
LEVEL 1	B2	A1	A1-ALT1	A1	A1	B2
REF PLAN #	1/S4.2	2/S4.2	3/S4.2	2/S4.2	2/S4.2	1/S4.2

BUILDING #2

STACKS	2-111	2-118	2-122	2-128	2-130	2-
ROOF						
LEVEL 4	B2	A1	A1-ALT1	A1	A1	2
LEVEL 3	B2	A1	A1-ALT1	A1	A1	2
LEVEL 2	B2	A1	A1-ALT1	A1	A1	2
LEVEL 1	B2	A1	A1-ALT1	A1	A1	2
REF PLAN #	1/S4.2	2/S4.2	3/S4.2	2/S4.1	2/S4.2	1/

BUILDING #3

STACKS	3-111
ROOF	
LEVEL 4	A1-ALT1
LEVEL 3	A1-ALT1
LEVEL 2	A1-ALT1
LEVEL 1	A1-ALT1
REF PLAN #	3/S4.2

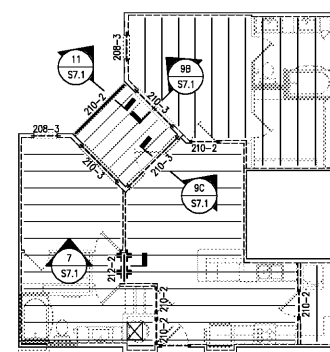
UNIT FLOOR & WALL FRAMING PLAN NOTES:

- FLOOR FRAMING SHALL BE AS FOLLOWS:
 - ALL FLOOR FRAMING SHALL BE 18" DEEP PRE-ENGINEERED OPEN WEB TRUSSES @ 24" O.C. UNO.
 - BALCONY JOIST FRAMING SHALL BE AS FOLLOWS:
 PTL 2x10 @ 16" OC UP TO 8'-9" CLEAR SPAN
 PTL 2x10 @ 12" OC UP TO 10'-3" CLEAR SPAN
 PTL 2-2x10 @ 16" OC UP TO 12'-5" CLEAR SPAN
 PTL 2-2x10 @ 12" OC UP TO 14'-3" CLEAR SPAN
- THE MIN. NUMBER OF WALL STUDS AT BEARING POINTS SHALL BE (SEE BUILT-UP COL. SCHEDULE ON S4.0 FOR ADD'L INFO.):
 BUILT-UP MULTI-PLY FLUSH BEAMS: SEE 13/S7.1 FOR ADDITIONAL INFORMATION (SAWN LUMBER AND LVL) (3 STUDS MIN)
 GIRDER TRUSSES (GT): SHALL MATCH THE NUMBER OF PLYS OF THE GIRDER TRUSS (3 STUDS MIN) UNO ON PLAN
 HEADERS/DROP BEAMS: SEE JAMB/KING STUD SCHEDULE
- THE CENTERLINE OF THE BEAM OR GT SHALL MATCH THE CENTERLINE OF THE SUPPORTING WALL STUDS.
- ALL COL'S, INCLUDING STUD PACKS, MUST ALIGN FLOOR-TO-FLOOR WITH SOLID BLOCKING OF THE SAME SIZE AND DIMENSION AS THE COL ABOVE, AT FLOOR CAVITY LOCATIONS. CONTINUE TO FDN OR BEAM SUPPORT BELOW.
- SEE S7.0a FOR ALLOWABLE WALL PLATE & STUD PENETRATIONS.
- SEE S7.0b FOR GENERAL SECTIONS AT BALCONY LEDGER PENETRATION, BALCONY GUARDRAIL ATTACHMENT AND FLOOR & STUD FRAMING AT WASHER BOX.
- WHERE STUD ALIGNMENT IS REQUIRED, SEE 2/S7.0 FOR ALLOWABLE OFFSET DISTANCE BETWEEN FLOOR TRUSS FRAMING AND WALL STUDS.
- SEE ARCH DWGS FOR EXACT FINISHED FLOOR ELEVATIONS.
- SEE GENERAL NOTES FOR LUMBER SPECIES AND GRADE REQ'S.
- ALL CONNECTOR TYPES REFER TO SIMPSON STRONG-TIE SPECIFICATIONS UNO. SEE GENERAL NOTES FOR ADD'L INFO.

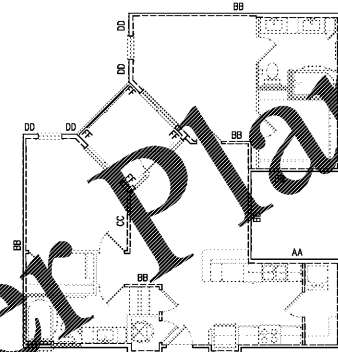
- SEE 1/S7.3 FOR TYPICAL WOOD OR STEEL BEAM TO BEAM AND BEAM TO HSS COLUMN CONNECTIONS NOT IDENTIFIED ON PLAN.
- EXTENTS OF WALL TYPE TAGS ARE FROM ONE INTERSECTING-WALL/WALL-CORNER/WALL-OPENING TO THE NEXT INTERSECTING-WALL/WALL-CORNER/WALL-OPENING UNO.
- DO NOT CORE BEAMS OR HEADERS UNLESS SPECIFIED BY EOR.
- SEE S0.# SERIES FOR GENERAL NOTES
 SEE S2.# SERIES FOR FLOOR FRAMING (STACK) PLANS
 SEE S2.#X SERIES FOR FLOOR BRACING PLANS
 SEE S3.# SERIES FOR ROOF FRAMING PLANS
 SEE S4.0a-b FOR SHEARWALL/ANCHORAGE INFORMATION
 SEE S4.0c FOR STUDWALL/BUILT UP COL SCHED
 SEE S4.# SERIES FOR INDIVIDUAL UNIT FRAMING PLANS
 SEE S6.# SERIES FOR FOUNDATION/RETAINING WALL DETAILS
 SEE S7.# SERIES FOR FLOOR FRAMING DETAILS
 SEE S8.# SERIES FOR ROOF FRAMING DETAILS
 SEE S9.# SERIES FOR MASONRY DETAILS
 SEE S10.# SERIES FOR CLUB/FITNESS/VERANDA/
 GARAGE/TRASH ENCLOSURE PLANS
 SEE S10.#X SERIES FOR CLUB/FITNESS/VERANDA/
 GARAGE/TRASH ENCLOSURE BRACING PLANS

UNIT FLOOR & WALL FRAMING PLAN LEGEND

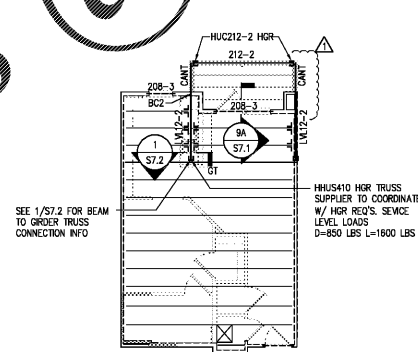
- 210-2 DENOTES WOOD BEAM/HEADER DESIGNATION. SEE BEAM/HEADER SCHEDULE ON S4.0c FOR ADD'L INFO.
- BC4 DENOTES BUILT-UP COLUMN DESIGNATION. SEE BUILT-UP COL SCHEDULE ON S4.0c FOR ADD'L INFO.
- GT DENOTES GIRDER TRUSS LOCATION.
- 2K/1J DENOTES QUANTITY OF KING STUDS (K) & JAMB STUDS (J) PER HEADER END. SEE S4.0c FOR STUD INFO.
- ⊗ DENOTES LOCATION OF MECH DUCT PENETRATION THRU CEILING. TRUSS SUPPLIER SHALL COORDINATE LOCATION OF TRUSSES W/PENETRATION. SEE ARCH DWGS FOR EXACT LOCATION.
- 6X" DENOTES DISTANCE FROM TOP OF BEAM FLANGE TO TOP OF SUBFLOOR. SEE 7/S7.0 FOR ADD'L INFO.
- ◇ DENOTES APPLICABLE BEAM OR BEAM TO COLUMN CONNECTION DETAIL PER S7.3.
- 0.8K DL 1.0K LL DENOTES DEAD & LIVE LOADS TO BE APPLIED AT GIRDER TRUSS JOINTS IN ADDITION TO PRESCRIBED LOADS GIVEN IN GENERAL NOTES.
- ⊠ DENOTES FLUSH BEAM WITH BOTTOM OF BEAM AT FLOOR BEARING.
- CON DENOTES HEADER WITHIN WALL FRAMING ABOVE OPENING.
- ⊠ DENOTES CONTINUOUS, UNINTERRUPTED HEADER. USE KING/JAMB STUD QUANTITY CORRESPONDING TO FULL WIDTH OF HEADER ROUGH OPENING.
- ⊠ DENOTES LOAD-BEARING WALL TYPE. SEE S4.0c FOR WALL FRAMING SCHEDULE & ADDITIONAL INFO.
- ⊠ DENOTES MOMENT FRAME CONNECTION. SEE 2/S7.3



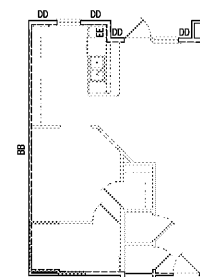
**UNIT B2
FLOOR FRAMING PLAN**



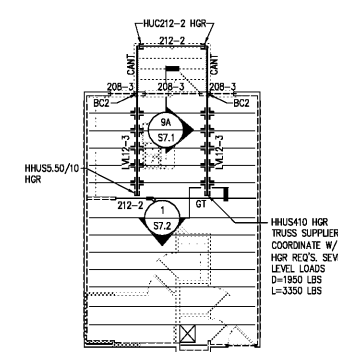
**UNIT B2
WALL FRAMING PLAN**



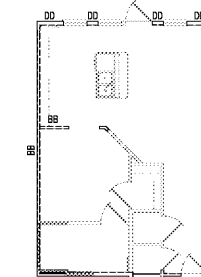
**UNIT A1
FLOOR FRAMING PLAN**



**UNIT A1
WALL FRAMING PLAN**



**UNIT A1-ALT1
FLOOR FRAMING PLAN**

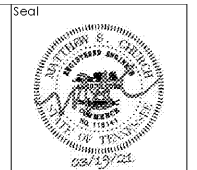


**UNIT A1-ALT1
WALL FRAMING PLAN**

1 S4.2 STACK # 1-111 1-137
 SCALE: 1/8" = 1'-0"
 2-111 2-137

2 S4.2 STACK # 1-118 1-128 1-130
 SCALE: 1/8" = 1'-0"
 2-118 2-128 2-130

3 S4.2 STACK # 1-122
 SCALE: 1/8" = 1'-0"
 2-122
 3-111



ZPA
 POORE & POORE ARCHITECTURE
 5736 Westside Parkway, Suite 100
 Memphis, Tennessee 38119
 Phone: 901.729.4214
 WWW.ZPA.TN.COM
 LICENSE #19170

DAVIS & CHURCH
 STRUCTURAL ENGINEERS
 7905 Westside Parkway, Ste. 200
 Alcoa, TN 38009
 (773) 612-1213

Project: 1928.00
 CADD File:
 Drawn By: AVG
 Checked By: TQ

Permit Release:
 May 15, 2020
 Construction Release Set:
 May 15, 2020

Revisions

No.	Date	Description
1	03/19/21	Owner Comments

ASI / RFI Revisions

No.	Date	Description
-----	------	-------------

Borough 33
 an Apartment Community by
 33 Broad MF, LLC
 in Chattanooga, Tennessee

Drawing Title:
 Unit Floor & Wall
 Framing Plans

S4.2

ISSUED FOR CONSTRUCTION