

BUILDING #1

| STACKS | 1-101 | 1-102 | 1-114 | 1-134 | 1-140 | 1-141 |
|------------|---------|---------|--------|---------|---------|---------|
| ROOF | | | | | | |
| LEVEL 4 | B1-ALT2 | B1-ALT2 | B3 | B1-ALT2 | B1-ALT2 | B1-ALT2 |
| LEVEL 3 | B1-ALT2 | B1-ALT2 | B3 | B1-ALT2 | B1-ALT2 | B1-ALT2 |
| LEVEL 2 | B1-ALT2 | B1-ALT2 | B3 | B1-ALT2 | B1-ALT2 | B1-ALT2 |
| LEVEL 1 | B1-ALT2 | B1-ALT2 | B3 | B1-ALT2 | B1-ALT2 | B1-ALT2 |
| REF PLAN # | 2/S4.1 | 2/S4.1 | 1/S4.2 | 2/S4.1 | 2/S4.1 | 2/S4.1 |

BUILDING #2

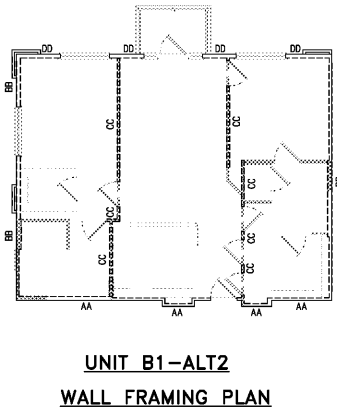
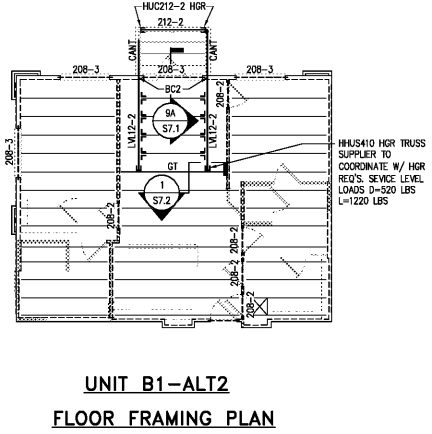
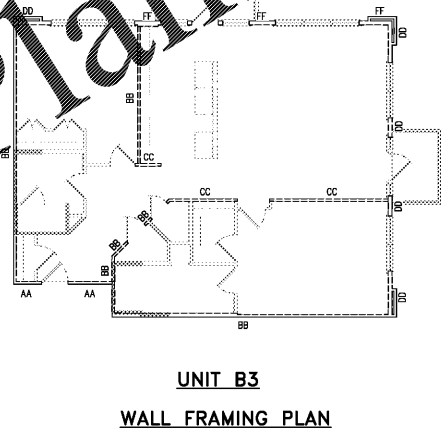
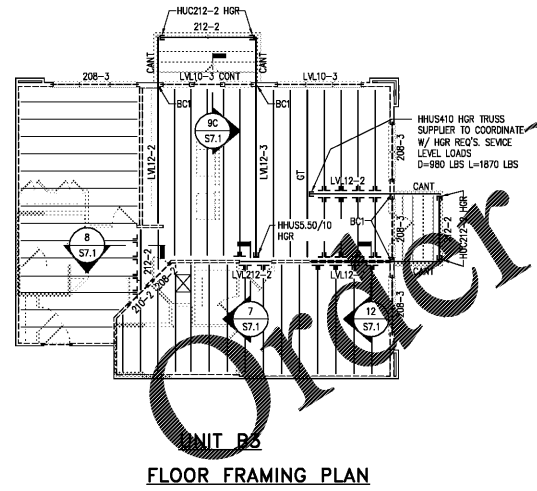
| STACKS | 2-101 | 2-102 | 2-114 | 2-134 | 139 | 2-140 | 2-14 |
|------------|---------|---------|--------|---------|------|---------|-------|
| ROOF | | | | | | | |
| LEVEL 4 | B1-ALT2 | B1-ALT2 | B3 | B1-ALT2 | ALT2 | B1-ALT2 | B1-AL |
| LEVEL 3 | B1-ALT2 | B1-ALT2 | B3 | B1-ALT2 | ALT2 | B1-ALT2 | B1-AL |
| LEVEL 2 | B1-ALT2 | B1-ALT2 | B3 | B1-ALT2 | ALT2 | B1-ALT2 | B1-AL |
| LEVEL 1 | B1-ALT2 | B1-ALT2 | B3 | B1-ALT2 | ALT2 | B1-ALT2 | B1-AL |
| REF PLAN # | 2/S4.1 | 2/S4.1 | 1/S4.2 | 2/S4.1 | 4.3 | 2/S4.1 | 2/S4. |

UNIT FLOOR & WALL FRAMING PLAN NOTES:

- FLOOR FRAMING SHALL BE AS FOLLOWS:
 - ALL FLOOR FRAMING SHALL BE 18" DEEP PRE-ENGINEERED OPEN WEB TRUSSES @ 24" O.C. UNO.
 - BALCONY JOIST FRAMING SHALL BE AS FOLLOWS:
 PTL 2x10 @ 16" OC UP TO 6'-6" CLEAR SPAN
 PTL 2x10 @ 12" OC UP TO 10'-3" CLEAR SPAN
 PTL 2-2x10 @ 16" OC UP TO 12'-5" CLEAR SPAN
 PTL 2-2x10 @ 12" OC UP TO 14'-5" CLEAR SPAN
- THE MIN NUMBER OF WALL STUDS AT BEARING POINTS SHALL BE (SEE BUILT-UP COL SCHEDULE ON S4.0 FOR ADD'L INFO.):
 BUILT-UP MULTI-PLY FLUSH BEAMS: SEE 13/ST.1 FOR ADDITIONAL INFORMATION (SAW LUMBER AND LVL) SHALL MATCH THE NUMBER OF PLYS OF THE GIRDER TRUSS (3 STUDS MIN) UNO ON PLAN SEE JAMB/KING STUD SCHEDULE.
 HEADERS/DROP BEAMS:
- THE CENTERLINE OF THE BEAM OR GT SHALL MATCH THE CENTERLINE OF THE SUPPORTING WALL STUDS.
- ALL COLS, INCLUDING STUD PACKS, MUST ALIGN FLOOR-TO-FLOOR WITH SOLID BLOCKING OF THE SAME SIZE AND DIMENSION AS THE COL ABOVE, AT FLOOR CAVITY LOCATIONS. CONTINUE TO FDN OR BEAM SUPPORT BELOW.
- SEE S7.0a FOR ALLOWABLE WALL PLATE & STUD PENETRATIONS.
- SEE S7.0b FOR GENERAL SECTIONS AT BALCONY LEDGER PENETRATION, BALCONY GUARDRAIL ATTACHMENT AND FLOOR & STUD FRAMING AT WASHER BOX.
- WHERE STUD ALIGNMENT IS REQUIRED, SEE 2/S7.0 FOR ALLOWABLE OFFSET DISTANCE BETWEEN FLOOR TRUSS FRAMING AND WALL STUDS.
- SEE ARCH DWGS FOR EXACT FINISHED FLOOR ELEVATIONS.
- SEE GENERAL NOTES FOR LUMBER SPECIES AND GRADE REQ'S.
- ALL CONNECTOR TYPES REFER TO SIMPSON STRONG-TIE SPECIFICATIONS UNO. SEE GENERAL NOTES FOR ADD'L INFO.
- SEE 1/ST.3 FOR TYPICAL WOOD OR STEEL BEAM TO BEAM AND BEAM TO HSS COLUMN CONNECTIONS NOT IDENTIFIED ON PLAN.
- EXTENTS OF WALL TYPE TAGS ARE FROM ONE INTERSECTING-WALL-CORNER/WALL-OPENING TO THE NEXT INTERSECTING-WALL-CORNER/WALL-OPENING UNO.
- DO NOT CORE BEAMS OR HEADERS UNLESS SPECIFIED BY EOR.
- SEE S0.# SERIES FOR GENERAL NOTES
 SEE S2.#X SERIES FOR FLOOR BRACING PLANS
 SEE S3.# SERIES FOR ROOF FRAMING PLANS
 SEE S4.0a-b FOR SHEARWALL/ANCHORAGE INFORMATION
 SEE S4.0c FOR STUD/WALL/BUILT UP COL SCHED#
 SEE S4.# SERIES FOR INDIVIDUAL UNIT FRAMING PLANS
 SEE S6.# SERIES FOR FOUNDATION/RETAINING WALL DETAILS
 SEE S7.# SERIES FOR FLOOR FRAMING DETAILS
 SEE S8.# SERIES FOR ROOF FRAMING DETAILS
 SEE S9.# SERIES FOR MASONRY DETAILS
 SEE S10.# SERIES FOR CLUB/FITNESS/VERANDA/
 GARAGE/TRASH ENCLOSURE PLANS
 SEE S10.#X SERIES FOR CLUB/FITNESS/VERANDA/
 GARAGE/TRASH ENCLOSURE BRACING PLANS

UNIT FLOOR & WALL FRAMING PLAN LEGEND

- 210-2 DENOTES WOOD BEAM/HEADER DESIGNATION. SEE BEAM/HEADER SCHEDULE ON S4.0c FOR ADD'L INFO.
- BC4 DENOTES BUILT-UP COLUMN DESIGNATION. SEE BUILT-UP COL SCHEDULE ON S4.0c FOR ADD'L INFO.
- GT DENOTES GIRDER TRUSS LOCATION.
- 2K/14 DENOTES QUANTITY OF KING STUDS (K) & JAMB STUDS (J) PER HEADER END. SEE S4.0c FOR STUD INFO.
- [Symbol] DENOTES LOCATION OF MECH DUCT PENETRATION THRU CEILING. TRUSS SUPPLIER SHALL COORDINATE LOCATION OF TRUSSES W/PENETRATION. SEE ARCH DWGS FOR EXACT LOCATION.
- 6 3/4" DENOTES DISTANCE FROM TOP OF STEEL BEAM FLANGE TO TOP OF SUBFLOOR. SEE 7/S7.2 FOR TYPICAL TOP OF STEEL ELEV.
- [Symbol] LETTER IN \diamond DENOTES APPLICABLE TO BEAM OR BEAM TO COLUMN CONNECTION DETAIL. SEE 7/S7.3.
- 0.8K DL 1.0X LL DENOTES DEAD & LIVE LOADS TO BE APPLIED AT GIRDER TRUSS POSITION TO WOOD TRUSSES GIVEN IN NOTES.
- [Symbol] DENOTES TRUSS BEAM WITH BOTTOM OF BEAM AT FLOOR LEVEL.
- [Symbol] DENOTES HEAD WITH WALL FRAMING ABOVE OPENING.
- [Symbol] DENOTES CONTINUOUS, UNINTERRUPTED HEADER. USE KING/JAMB STUD QUANTITY CORRESPONDING TO FULL WIDTH OF HEADER ROUGH OPENING.
- [Symbol] DENOTES LOAD-BEARING WALL TYPE. SEE S4.0c FOR WALL FRAMING SCHEDULE & ADDITIONAL INFO.
- [Symbol] DENOTES MOMENT FRAME CONNECTION. SEE 2/S7.3.



1 STACK # 1-114
SCALE: 1/8" = 1'-0"

54.1 2-114

2 STACK # 1-101 1-102 1-134 1-140 1-141
SCALE: 1/8" = 1'-0"

54.1 2-101 2-102 2-134 2-140 2-141

ZPA
PEOPLE & PURPOSE ARCHITECTURE
5736 Westchester Road, Suite 100
Memphis, TN 38118
Tel: 901.314.1111
www.zpa.net
INC 8/14/1970

DAVIS & CHURCH
STRUCTURAL ENGINEERS
7905 Westside Parkway, Ste. 200
Alpharetta, GA 30009
(770) 612-1212

| Project: | 1928.00 | |
|---------------------------|--------------|-------------|
| CADD File: | | |
| Drawn By: | AVG | |
| Checked By: | TG | |
| Permit Release: | May 15, 2020 | |
| Construction Release Set: | May 15, 2020 | |
| Revisions | | |
| No. | Date | Description |
| | | |
| | | |
| | | |
| | | |
| | | |
| | | |
| | | |
| | | |
| | | |
| | | |

© 2019 Peole & Poole Architecture, LLC
Drawings and specifications are and shall remain the property of Peole & Poole Architecture, LLC and shall not be used for reproduction whole or part in any form without prior written consent of Peole & Poole Architecture, LLC.

Borough 33
an Apartment Community by
33 Broad MF, LLC
in Chattanooga, Tennessee

Drawing Title:
Unit Floor & Wall
Framing Plans

S4.1

ISSUED FOR CONSTRUCTION