

**LEADER SPECIFICATIONS:**

TOUGH SCREEN TO BE MOUNTED ON THIS WALL, 4" FROM THE FLOOR TO THE TOP OF TOUCH SCREEN. DIV DUPLEX OUTLET BEING EXTENDED TOUGH SCREEN. POWER OUTLET OUT TO BE 4" FROM THE BOTTOM OF THE TOUCH SCREEN TO THE BOTTOM OF THE TOUCH SCREEN. THE WALL ABOVE THESE IS ENOUGH SURFACE AREA FOR THE TOUCH SCREEN MOUNTING. ACCESSIBLE FROM OUTSIDE THE ROOM - REMAINS UP DOWN FROM THE TOP RIGHT CORNER OF THE TOUCH SCREEN AND UP FROM THE RIGHT SIDE OF THE TOUCH SCREEN. THE WALL AT THIS POINT AND DRILL A 1/2" SIDE HOLE THROUGH THE WALL.

IF NOT A DOOR SHOWN TO BE PRE-INSTALLED BY PROPERTY, INSIDE WIRE TO BE RUN THROUGH THE ACCESSIBLE HOLE ON THE SIDE OF THE DUPLEX OUTLET ON THE EXTERIOR OF THE ROOM. LEAVE A MINIMUM OF 6" UNABLE LENGTH.

TOUGH SCREEN TO BE MOUNTED ON THIS WALL, 4" FROM THE FLOOR TO THE TOP OF TOUCH SCREEN. DIV DUPLEX OUTLET BEING EXTENDED TOUGH SCREEN. POWER OUTLET OUT TO BE 4" FROM THE BOTTOM OF THE TOUCH SCREEN TO THE BOTTOM OF THE TOUCH SCREEN. THE WALL ABOVE THESE IS ENOUGH SURFACE AREA FOR THE TOUCH SCREEN MOUNTING. ACCESSIBLE FROM OUTSIDE THE ROOM - REMAINS UP DOWN FROM THE TOP RIGHT CORNER OF THE TOUCH SCREEN AND UP FROM THE RIGHT SIDE OF THE TOUCH SCREEN. THE WALL AT THIS POINT AND DRILL A 1/2" SIDE HOLE THROUGH THE WALL.

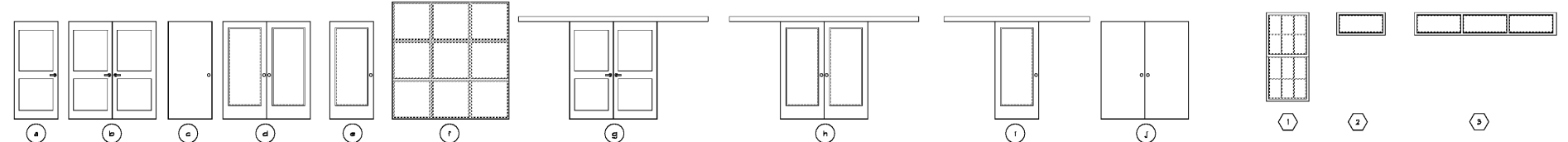
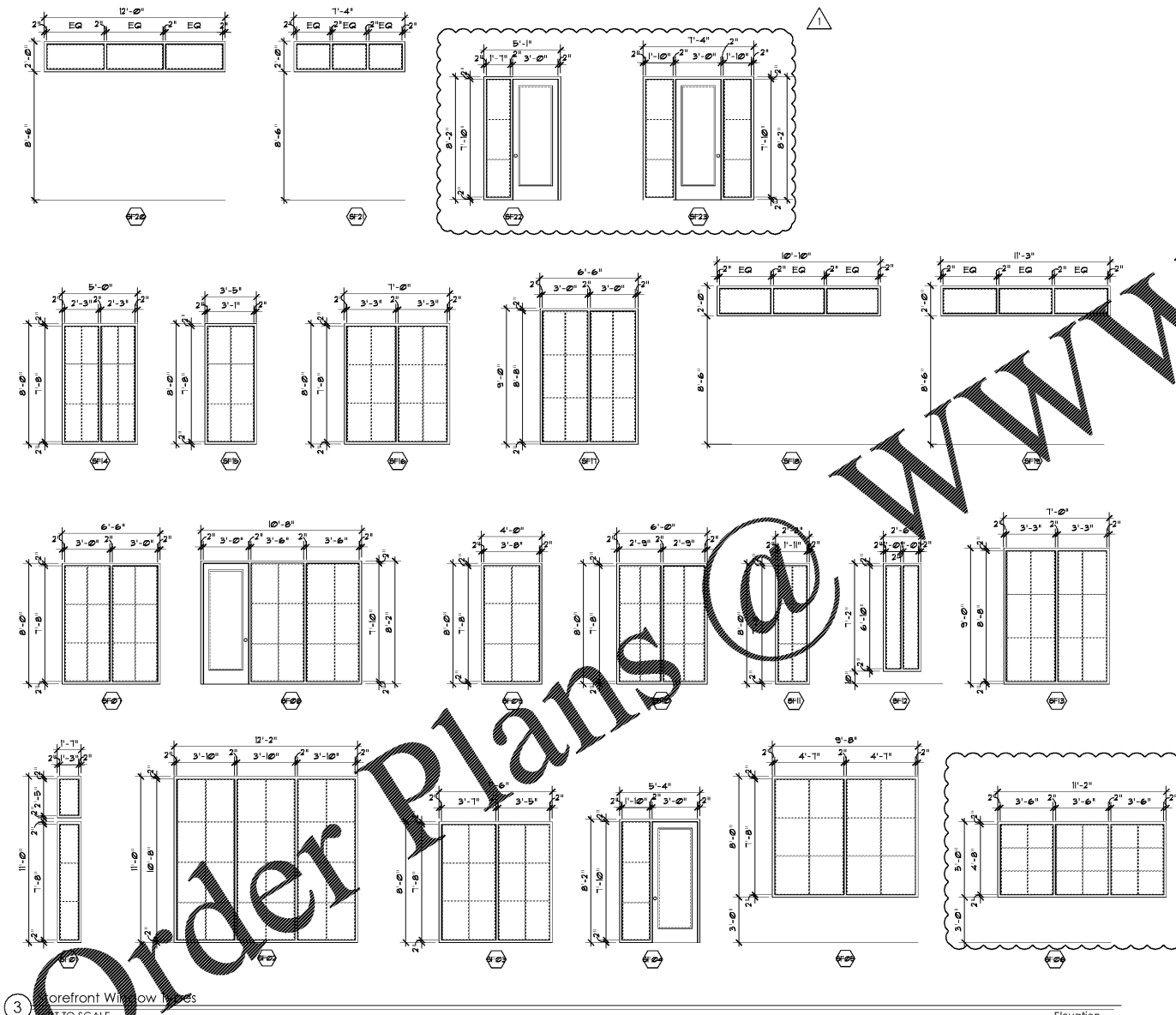
IF NOT A DOOR SHOWN TO BE PRE-INSTALLED BY PROPERTY, INSIDE WIRE TO BE RUN THROUGH THE ACCESSIBLE HOLE ON THE SIDE OF THE DUPLEX OUTLET ON THE EXTERIOR OF THE ROOM. LEAVE A MINIMUM OF 6" UNABLE LENGTH.

TOUGH SCREEN TO BE MOUNTED ON THIS WALL, 4" FROM THE FLOOR TO THE TOP OF TOUCH SCREEN. DIV DUPLEX OUTLET BEING EXTENDED TOUGH SCREEN. POWER OUTLET OUT TO BE 4" FROM THE BOTTOM OF THE TOUCH SCREEN TO THE BOTTOM OF THE TOUCH SCREEN. THE WALL ABOVE THESE IS ENOUGH SURFACE AREA FOR THE TOUCH SCREEN MOUNTING. ACCESSIBLE FROM OUTSIDE THE ROOM - REMAINS UP DOWN FROM THE TOP RIGHT CORNER OF THE TOUCH SCREEN AND UP FROM THE RIGHT SIDE OF THE TOUCH SCREEN. THE WALL AT THIS POINT AND DRILL A 1/2" SIDE HOLE THROUGH THE WALL.

IF NOT A DOOR SHOWN TO BE PRE-INSTALLED BY PROPERTY, INSIDE WIRE TO BE RUN THROUGH THE ACCESSIBLE HOLE ON THE SIDE OF THE DUPLEX OUTLET ON THE EXTERIOR OF THE ROOM. LEAVE A MINIMUM OF 6" UNABLE LENGTH.

TOUGH SCREEN TO BE MOUNTED ON THIS WALL, 4" FROM THE FLOOR TO THE TOP OF TOUCH SCREEN. DIV DUPLEX OUTLET BEING EXTENDED TOUGH SCREEN. POWER OUTLET OUT TO BE 4" FROM THE BOTTOM OF THE TOUCH SCREEN TO THE BOTTOM OF THE TOUCH SCREEN. THE WALL ABOVE THESE IS ENOUGH SURFACE AREA FOR THE TOUCH SCREEN MOUNTING. ACCESSIBLE FROM OUTSIDE THE ROOM - REMAINS UP DOWN FROM THE TOP RIGHT CORNER OF THE TOUCH SCREEN AND UP FROM THE RIGHT SIDE OF THE TOUCH SCREEN. THE WALL AT THIS POINT AND DRILL A 1/2" SIDE HOLE THROUGH THE WALL.

IF NOT A DOOR SHOWN TO BE PRE-INSTALLED BY PROPERTY, INSIDE WIRE TO BE RUN THROUGH THE ACCESSIBLE HOLE ON THE SIDE OF THE DUPLEX OUTLET ON THE EXTERIOR OF THE ROOM. LEAVE A MINIMUM OF 6" UNABLE LENGTH.



**PUBLIC DOOR / HARDWARE SCHEDULE**

Mark	Size	Type	Hardware	Door Location
20	3'-0" x 8'-0"	Hollow Metal	Stainless Steel	STAIR EXIT, EXTERIOR
21	3'-0" x 8'-0"	Hollow Metal	Stainless Steel	STAIR TO CORRIDOR
22	3'-0" x 8'-0"	Hollow Metal	Stainless Steel	STAIR TO CORRIDOR
23	3'-0" x 8'-0"	Hollow Metal	Stainless Steel	CORRIDOR TO EXTERIOR
24	2'-10" x 6'-8"	Overhead Sectional	Stainless Steel	STORAGE / MECHANICAL / DATA
25	3'-0" x 6'-8"	Overhead Sectional	Stainless Steel	ELECTRICAL
26	3'-0" x 6'-8"	Overhead Sectional	Stainless Steel	CORRIDOR TO EXTERIOR
27	3'-0" x 6'-8"	Overhead Sectional	Stainless Steel	CORRIDOR TO EXTERIOR
28	3'-0" x 6'-8"	Overhead Sectional	Stainless Steel	STAIR TO EXTERIOR
29	3'-0" x 6'-8"	Overhead Sectional	Stainless Steel	STAIR TO EXTERIOR
30	3'-0" x 6'-8"	Overhead Sectional	Stainless Steel	STAIR TO EXTERIOR
31	3'-0" x 6'-8"	Overhead Sectional	Stainless Steel	STAIR TO EXTERIOR
32	3'-0" x 6'-8"	Overhead Sectional	Stainless Steel	STAIR TO EXTERIOR
33	3'-0" x 6'-8"	Overhead Sectional	Stainless Steel	STAIR TO EXTERIOR
34	3'-0" x 6'-8"	Overhead Sectional	Stainless Steel	STAIR TO EXTERIOR
35	3'-0" x 6'-8"	Overhead Sectional	Stainless Steel	STAIR TO EXTERIOR
36	3'-0" x 6'-8"	Overhead Sectional	Stainless Steel	STAIR TO EXTERIOR
37	3'-0" x 6'-8"	Overhead Sectional	Stainless Steel	STAIR TO EXTERIOR
38	3'-0" x 6'-8"	Overhead Sectional	Stainless Steel	STAIR TO EXTERIOR
39	3'-0" x 6'-8"	Overhead Sectional	Stainless Steel	STAIR TO EXTERIOR
40	3'-0" x 6'-8"	Overhead Sectional	Stainless Steel	STAIR TO EXTERIOR
41	3'-0" x 6'-8"	Overhead Sectional	Stainless Steel	STAIR TO EXTERIOR
42	3'-0" x 6'-8"	Overhead Sectional	Stainless Steel	STAIR TO EXTERIOR
43	3'-0" x 6'-8"	Overhead Sectional	Stainless Steel	STAIR TO EXTERIOR
44	3'-0" x 6'-8"	Overhead Sectional	Stainless Steel	STAIR TO EXTERIOR
45	3'-0" x 6'-8"	Overhead Sectional	Stainless Steel	STAIR TO EXTERIOR
46	3'-0" x 6'-8"	Overhead Sectional	Stainless Steel	STAIR TO EXTERIOR
47	3'-0" x 6'-8"	Overhead Sectional	Stainless Steel	STAIR TO EXTERIOR
48	3'-0" x 6'-8"	Overhead Sectional	Stainless Steel	STAIR TO EXTERIOR
49	3'-0" x 6'-8"	Overhead Sectional	Stainless Steel	STAIR TO EXTERIOR
50	4'-2" x 8'-0"	Overhead Sectional	Stainless Steel	STAIR TO EXTERIOR
51	6'-0" x 8'-0"	Overhead Sectional	Stainless Steel	STAIR TO EXTERIOR
52	12'-0" x 9'-0"	Overhead Sectional	Stainless Steel	STAIR TO EXTERIOR
53	3'-0" x 6'-8"	Overhead Sectional	Stainless Steel	STAIR TO EXTERIOR
54	3'-0" x 6'-8"	Overhead Sectional	Stainless Steel	STAIR TO EXTERIOR
55	3'-0" x 6'-8"	Overhead Sectional	Stainless Steel	STAIR TO EXTERIOR
56	3'-0" x 6'-8"	Overhead Sectional	Stainless Steel	STAIR TO EXTERIOR

**PUBLIC WINDOW SCHEDULE**

Mark	Size	Type	Hardware	Window Location
W1	6'-0" x 8'-0"	Aluminum Single Hung	Stainless Steel	STAIR TO EXTERIOR
W2	6'-0" x 8'-0"	Aluminum Single Hung	Stainless Steel	STAIR TO EXTERIOR
W3	6'-0" x 8'-0"	Aluminum Single Hung	Stainless Steel	STAIR TO EXTERIOR
W4	6'-0" x 8'-0"	Aluminum Single Hung	Stainless Steel	STAIR TO EXTERIOR
W5	6'-0" x 8'-0"	Aluminum Single Hung	Stainless Steel	STAIR TO EXTERIOR
W6	6'-0" x 8'-0"	Aluminum Single Hung	Stainless Steel	STAIR TO EXTERIOR
W7	6'-0" x 8'-0"	Aluminum Single Hung	Stainless Steel	STAIR TO EXTERIOR
W8	6'-0" x 8'-0"	Aluminum Single Hung	Stainless Steel	STAIR TO EXTERIOR
W9	6'-0" x 8'-0"	Aluminum Single Hung	Stainless Steel	STAIR TO EXTERIOR
W10	6'-0" x 8'-0"	Aluminum Single Hung	Stainless Steel	STAIR TO EXTERIOR
W11	6'-0" x 8'-0"	Aluminum Single Hung	Stainless Steel	STAIR TO EXTERIOR
W12	6'-0" x 8'-0"	Aluminum Single Hung	Stainless Steel	STAIR TO EXTERIOR
W13	6'-0" x 8'-0"	Aluminum Single Hung	Stainless Steel	STAIR TO EXTERIOR
W14	6'-0" x 8'-0"	Aluminum Single Hung	Stainless Steel	STAIR TO EXTERIOR
W15	6'-0" x 8'-0"	Aluminum Single Hung	Stainless Steel	STAIR TO EXTERIOR
W16	6'-0" x 8'-0"	Aluminum Single Hung	Stainless Steel	STAIR TO EXTERIOR
W17	6'-0" x 8'-0"	Aluminum Single Hung	Stainless Steel	STAIR TO EXTERIOR
W18	6'-0" x 8'-0"	Aluminum Single Hung	Stainless Steel	STAIR TO EXTERIOR
W19	6'-0" x 8'-0"	Aluminum Single Hung	Stainless Steel	STAIR TO EXTERIOR
W20	6'-0" x 8'-0"	Aluminum Single Hung	Stainless Steel	STAIR TO EXTERIOR
W21	6'-0" x 8'-0"	Aluminum Single Hung	Stainless Steel	STAIR TO EXTERIOR
W22	6'-0" x 8'-0"	Aluminum Single Hung	Stainless Steel	STAIR TO EXTERIOR
W23	6'-0" x 8'-0"	Aluminum Single Hung	Stainless Steel	STAIR TO EXTERIOR
W24	6'-0" x 8'-0"	Aluminum Single Hung	Stainless Steel	STAIR TO EXTERIOR
W25	6'-0" x 8'-0"	Aluminum Single Hung	Stainless Steel	STAIR TO EXTERIOR
W26	6'-0" x 8'-0"	Aluminum Single Hung	Stainless Steel	STAIR TO EXTERIOR
W27	6'-0" x 8'-0"	Aluminum Single Hung	Stainless Steel	STAIR TO EXTERIOR
W28	6'-0" x 8'-0"	Aluminum Single Hung	Stainless Steel	STAIR TO EXTERIOR
W29	6'-0" x 8'-0"	Aluminum Single Hung	Stainless Steel	STAIR TO EXTERIOR
W30	6'-0" x 8'-0"	Aluminum Single Hung	Stainless Steel	STAIR TO EXTERIOR
W31	6'-0" x 8'-0"	Aluminum Single Hung	Stainless Steel	STAIR TO EXTERIOR
W32	6'-0" x 8'-0"	Aluminum Single Hung	Stainless Steel	STAIR TO EXTERIOR
W33	6'-0" x 8'-0"	Aluminum Single Hung	Stainless Steel	STAIR TO EXTERIOR
W34	6'-0" x 8'-0"	Aluminum Single Hung	Stainless Steel	STAIR TO EXTERIOR
W35	6'-0" x 8'-0"	Aluminum Single Hung	Stainless Steel	STAIR TO EXTERIOR
W36	6'-0" x 8'-0"	Aluminum Single Hung	Stainless Steel	STAIR TO EXTERIOR
W37	6'-0" x 8'-0"	Aluminum Single Hung	Stainless Steel	STAIR TO EXTERIOR
W38	6'-0" x 8'-0"	Aluminum Single Hung	Stainless Steel	STAIR TO EXTERIOR
W39	6'-0" x 8'-0"	Aluminum Single Hung	Stainless Steel	STAIR TO EXTERIOR
W40	6'-0" x 8'-0"	Aluminum Single Hung	Stainless Steel	STAIR TO EXTERIOR
W41	6'-0" x 8'-0"	Aluminum Single Hung	Stainless Steel	STAIR TO EXTERIOR
W42	6'-0" x 8'-0"	Aluminum Single Hung	Stainless Steel	STAIR TO EXTERIOR
W43	6'-0" x 8'-0"	Aluminum Single Hung	Stainless Steel	STAIR TO EXTERIOR
W44	6'-0" x 8'-0"	Aluminum Single Hung	Stainless Steel	STAIR TO EXTERIOR
W45	6'-0" x 8'-0"	Aluminum Single Hung	Stainless Steel	STAIR TO EXTERIOR
W46	6'-0" x 8'-0"	Aluminum Single Hung	Stainless Steel	STAIR TO EXTERIOR
W47	6'-0" x 8'-0"	Aluminum Single Hung	Stainless Steel	STAIR TO EXTERIOR
W48	6'-0" x 8'-0"	Aluminum Single Hung	Stainless Steel	STAIR TO EXTERIOR
W49	6'-0" x 8'-0"	Aluminum Single Hung	Stainless Steel	STAIR TO EXTERIOR
W50	6'-0" x 8'-0"	Aluminum Single Hung	Stainless Steel	STAIR TO EXTERIOR
W51	6'-0" x 8'-0"	Aluminum Single Hung	Stainless Steel	STAIR TO EXTERIOR
W52	6'-0" x 8'-0"	Aluminum Single Hung	Stainless Steel	STAIR TO EXTERIOR
W53	6'-0" x 8'-0"	Aluminum Single Hung	Stainless Steel	STAIR TO EXTERIOR
W54	6'-0" x 8'-0"	Aluminum Single Hung	Stainless Steel	STAIR TO EXTERIOR
W55	6'-0" x 8'-0"	Aluminum Single Hung	Stainless Steel	STAIR TO EXTERIOR
W56	6'-0" x 8'-0"	Aluminum Single Hung	Stainless Steel	STAIR TO EXTERIOR
W57	6'-0" x 8'-0"	Aluminum Single Hung	Stainless Steel	STAIR TO EXTERIOR
W58	6'-0" x 8'-0"	Aluminum Single Hung	Stainless Steel	STAIR TO EXTERIOR
W59	6'-0" x 8'-0"	Aluminum Single Hung	Stainless Steel	STAIR TO EXTERIOR
W60	6'-0" x 8'-0"	Aluminum Single Hung	Stainless Steel	STAIR TO EXTERIOR
W61	6'-0" x 8'-0"	Aluminum Single Hung	Stainless Steel	STAIR TO EXTERIOR
W62	6'-0" x 8'-0"	Aluminum Single Hung	Stainless Steel	STAIR TO EXTERIOR
W63	6'-0" x 8'-0"	Aluminum Single Hung	Stainless Steel	STAIR TO EXTERIOR
W64	6'-0" x 8'-0"	Aluminum Single Hung	Stainless Steel	STAIR TO EXTERIOR
W65	6'-0" x 8'-0"	Aluminum Single Hung	Stainless Steel	STAIR TO EXTERIOR
W66	6'-0" x 8'-0"	Aluminum Single Hung	Stainless Steel	STAIR TO EXTERIOR
W67	6'-0" x 8'-0"	Aluminum Single Hung	Stainless Steel	STAIR TO EXTERIOR
W68	6'-0" x 8'-0"	Aluminum Single Hung	Stainless Steel	STAIR TO EXTERIOR
W69	6'-0" x 8'-0"	Aluminum Single Hung	Stainless Steel	STAIR TO EXTERIOR
W70	6'-0" x 8'-0"	Aluminum Single Hung	Stainless Steel	STAIR TO EXTERIOR
W71	6'-0" x 8'-0"	Aluminum Single Hung	Stainless Steel	STAIR TO EXTERIOR
W72	6'-0" x 8'-0"	Aluminum Single Hung	Stainless Steel	STAIR TO EXTERIOR
W73	6'-0" x 8'-0"	Aluminum Single Hung	Stainless Steel	STAIR TO EXTERIOR
W74	6'-0" x 8'-0"	Aluminum Single Hung	Stainless Steel	STAIR TO EXTERIOR
W75	6'-0" x 8'-0"	Aluminum Single Hung	Stainless Steel	STAIR TO EXTERIOR
W76	6'-0" x 8'-0"	Aluminum Single Hung	Stainless Steel	STAIR TO EXTERIOR
W77	6'-0" x 8'-0"	Aluminum Single Hung	Stainless Steel	STAIR TO EXTERIOR
W78	6'-0" x 8'-0"	Aluminum Single Hung	Stainless Steel	STAIR TO EXTERIOR
W79	6'-0" x 8'-0"	Aluminum Single Hung	Stainless Steel	STAIR TO EXTERIOR
W80	6'-0" x 8'-0"	Aluminum Single Hung	Stainless Steel	STAIR TO EXTERIOR
W81	6'-0" x 8'-0"	Aluminum Single Hung	Stainless Steel	STAIR TO EXTERIOR
W82	6'-0" x 8'-0"	Aluminum Single Hung	Stainless Steel	STAIR TO EXTERIOR
W83	6'-0" x 8'-0"	Aluminum Single Hung	Stainless Steel	STAIR TO EXTERIOR
W84	6'-0" x 8'-0"	Aluminum Single Hung	Stainless Steel	STAIR TO EXTERIOR
W85	6'-0" x 8'-0"	Aluminum Single Hung	Stainless Steel	STAIR TO EXTERIOR
W86	6'-0" x 8'-0"	Aluminum Single Hung	Stainless Steel	STAIR TO EXTERIOR
W87	6'-0" x 8'-0"	Aluminum Single Hung	Stainless Steel	STAIR TO EXTERIOR
W88	6'-0" x 8'-0"	Aluminum Single Hung	Stainless Steel	STAIR TO EXTERIOR
W89	6'-0" x 8'-0"	Aluminum Single Hung	Stainless Steel	STAIR TO EXTERIOR
W90	6'-0" x 8'-0"	Aluminum Single Hung	Stainless Steel	STAIR TO EXTERIOR
W91	6'-0" x 8'-0"	Aluminum Single Hung	Stainless Steel	STAIR TO EXTERIOR
W92	6'-0" x 8'-0"	Aluminum Single Hung	Stainless Steel	STAIR TO EXTERIOR
W93	6'-0" x 8'-0"	Aluminum Single Hung	Stainless Steel	STAIR TO EXTERIOR
W94	6'-0" x 8'-0"	Aluminum Single Hung	Stainless Steel	STAIR TO EXTERIOR
W95	6'-0" x 8'-0"	Aluminum Single Hung	Stainless Steel	STAIR TO EXTERIOR
W96	6'-0" x 8'-0"	Aluminum Single Hung	Stainless Steel	STAIR TO EXTERIOR
W97	6'-0" x 8'-0"	Aluminum Single Hung	Stainless Steel	STAIR TO EXTERIOR
W98	6'-0" x 8'-0"	Aluminum Single Hung	Stainless Steel	STAIR TO EXTERIOR
W99	6'-0" x 8'-0"	Aluminum Single Hung	Stainless Steel	STAIR TO EXTERIOR
W100	6'-0" x 8'-0"	Aluminum Single Hung	Stainless Steel	STAIR TO EXTERIOR

**PUBLIC STOREFRONT SCHEDULE**

Mark	Size	Type	Hardware	Storefront Location
SF01	1'-2" x 11'-0"	Aluminum Fixed	Stainless Steel	Lobby
SF02	1'-2" x 11'-0"	Aluminum Fixed	Stainless Steel	Lobby, Mail
SF03	7'-4" x 8'-0"	Aluminum Fixed	Stainless Steel	Mail Office
SF04	1'-10" x 8'-2"	Aluminum Fixed	Stainless Steel	Mail, Spin/Yoga
SF05	6'-0" x 8'-0"	Aluminum Fixed	Stainless Steel	Clubroom
SF06	11'-2" x 8'-0"	Aluminum Fixed	Stainless Steel	Clubroom, Game Room
SF07	6'-4" x 8'-0"	Aluminum Fixed	Stainless Steel	Game Room
SF08	7'-4" x 8'-0"	Aluminum Fixed	Stainless Steel	Office
SF09	4'-0" x 8'-0"	Aluminum Fixed	Stainless Steel	Micro Office, Spin/Yoga
SF10	6'-0" x 8'-0"	Aluminum Fixed	Stainless Steel	Micro Office
SF11	2'-3" x 8'-0"	Aluminum Fixed	Stainless Steel	Conference
SF12	2'-4" x 7'-2"	Aluminum Fixed	Stainless Steel	Game Room
SF13	7'-0" x 9'-0"	Aluminum Fixed	Stainless Steel	Fitness
SF14	5'-0" x 8'-0"	Aluminum Fixed	Stainless Steel	Pet Spa
SF15	3'-5" x 8'-0"	Aluminum Fixed	Stainless Steel	Pet Spa
SF16	7'-0" x 8'-0"	Aluminum Fixed	Stainless Steel	Fitness
SF17	6'-4" x 9'-0"	Aluminum Fixed	Stainless Steel	Fitness
SF18	10'-10" x 2'-0"	Aluminum Fixed	Stainless Steel	Conference
SF19	11'-3" x 2'-0"	Aluminum Fixed	Stainless Steel	Conference
SF20	7'-4" x 2'-0"	Aluminum Fixed	Stainless Steel	Conference
SF21	7'-4" x 2'-0"	Aluminum Fixed	Stainless Steel	Lobby & Mailroom
SF22	1'-2" x 8'-2"	Aluminum Fixed	Stainless Steel	Mailroom & Game Room
SF23	1'-2" x 8'-2"	Aluminum Fixed	Stainless Steel	Mailroom

Seal

March 19, 2021

**ZPA**

**POOLE & POOLE ARCHITECTURE**  
3736 Winterfield Road, Suite 102  
Midlothian, Virginia 23113  
Telephone 804.225.0215  
www.zpa.net

Project: 1928.00  
CADD File: SCHED-AM  
Drawn By: SGS  
Checked By: GA

Permit Release:  
May 15, 2020  
Construction Release Set:  
May 15, 2020

Revisions  
No. Date Description  
1 03/19/21 Owner Comments

ASI / RFI Revisions  
No. Date Description

© 2019 Poole & Poole Architecture, LLC  
Drawings and specifications are the property of Poole & Poole Architecture, LLC and shall not be used or reproduced without the written consent of Poole & Poole Architecture, LLC.

**Borough 33**  
an Apartment Community by  
33 Broad MF, LLC  
in Chattanooga, Tennessee

Drawing Title:  
Public Areas  
Door / Hardware &  
Window Schedules

**A6.0**

ISSUED FOR CONSTRUCTION