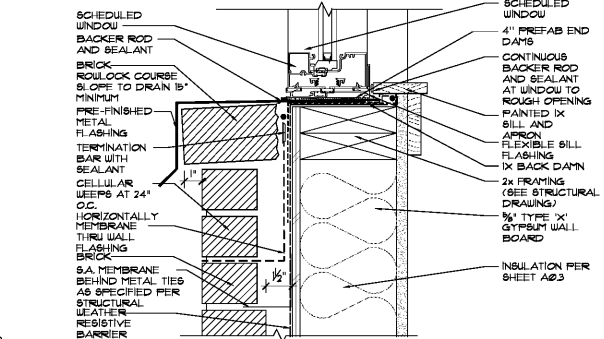
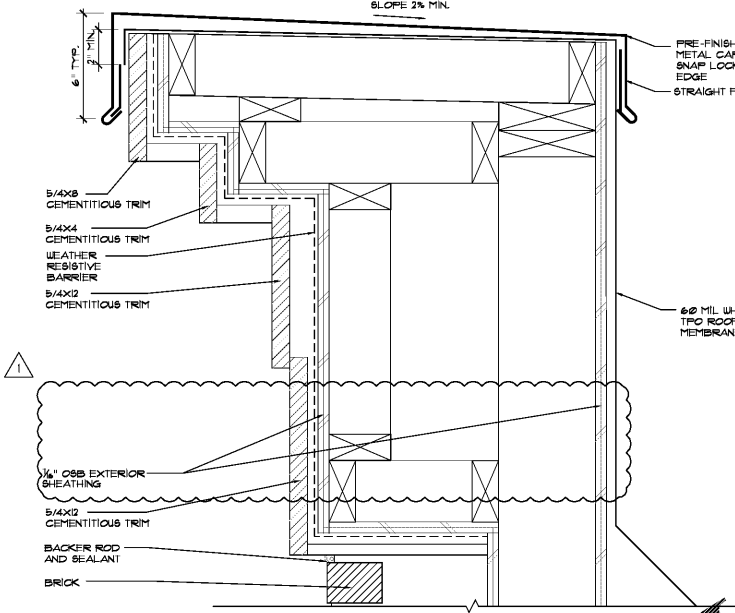


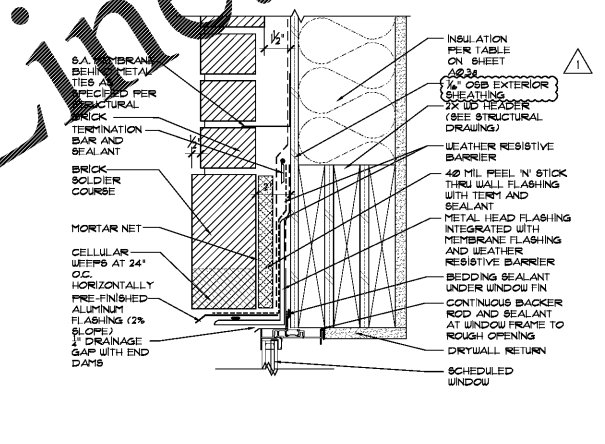
13 Storefront Header at Brick Veneer
 Scale: 3" = 1'-0" Detail



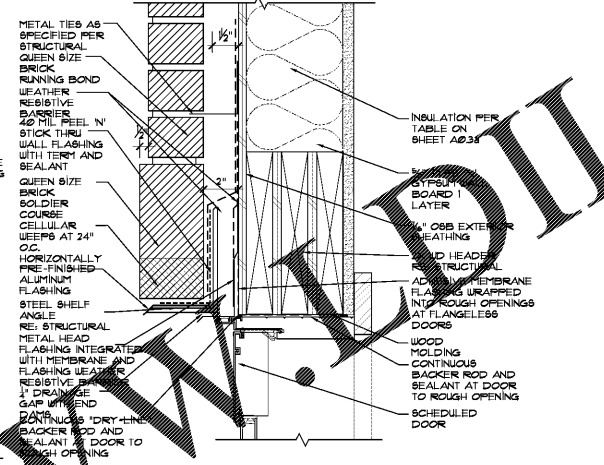
14 Storefront at Brick Veneer
 Scale: 3" = 1'-0" Detail



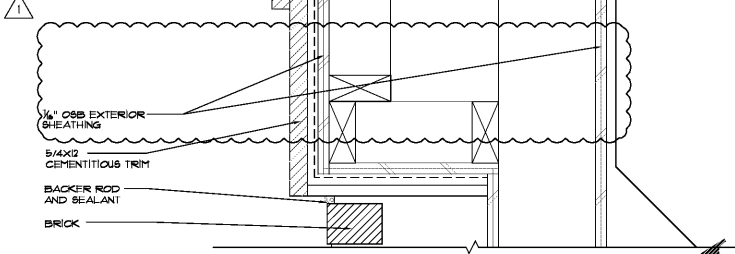
11 Brick Parapet
 Scale: 3" = 1'-0" Detail



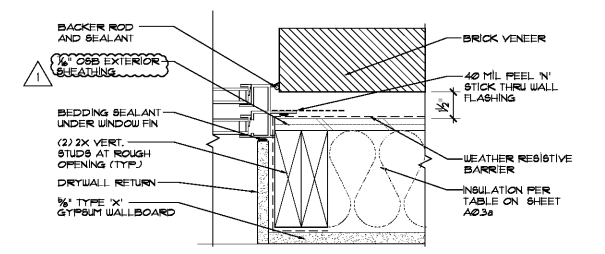
13 Storefront Header at Brick Veneer
 Scale: 3" = 1'-0" Detail



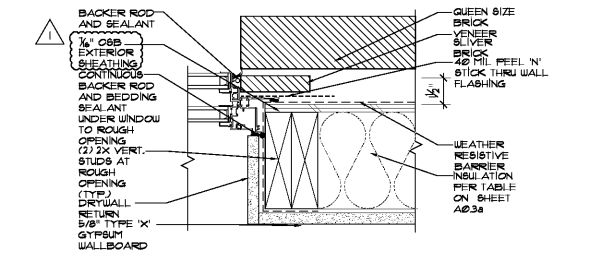
14 Storefront at Brick Veneer
 Scale: 3" = 1'-0" Detail



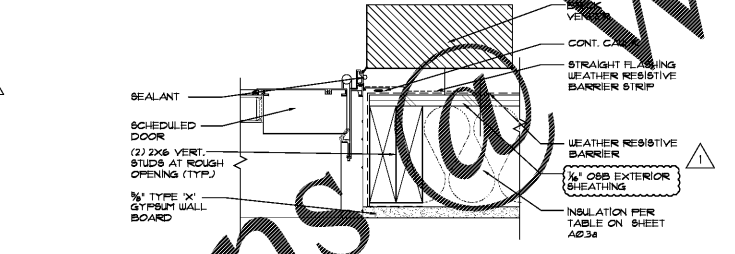
12 Storefront Jamb at Brick Veneer
 Scale: 3" = 1'-0" Detail



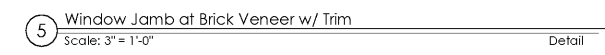
9 Window Head at Brick Veneer
 Scale: 3" = 1'-0" Detail



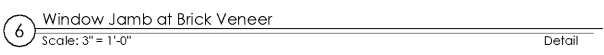
10 Window Jamb at Brick Veneer
 Scale: 3" = 1'-0" Detail



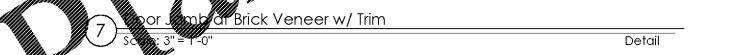
7 Window Jamb at Brick Veneer w/ Trim
 Scale: 3" = 1'-0" Detail



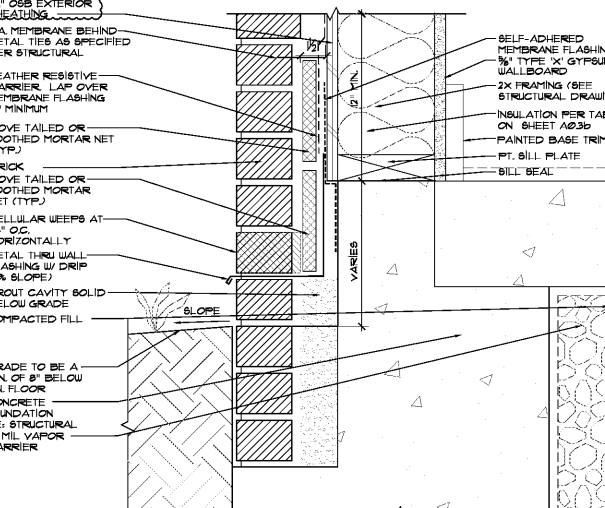
5 Window Jamb at Brick Veneer w/ Trim
 Scale: 3" = 1'-0" Detail



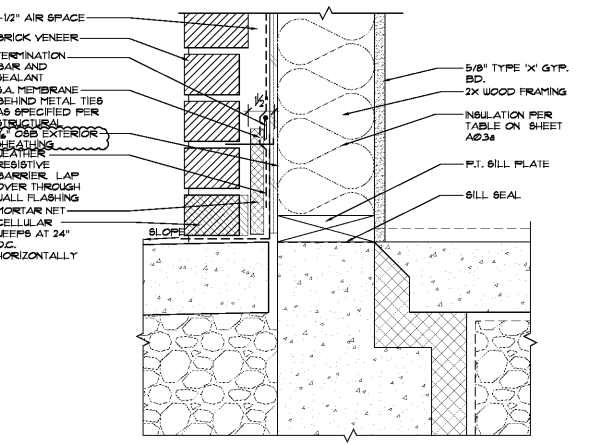
6 Window Jamb at Brick Veneer
 Scale: 3" = 1'-0" Detail



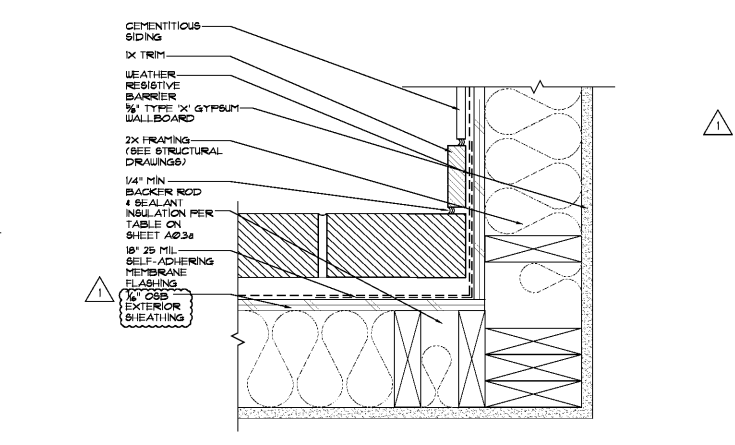
7 Window Jamb at Brick Veneer w/ Trim
 Scale: 3" = 1'-0" Detail



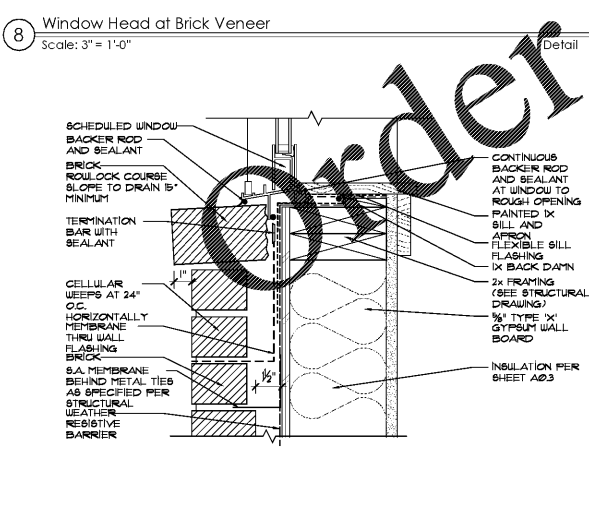
1 Wall Base at Brick Veneer (Grade)
 Scale: 3" = 1'-0" Detail



2 Wall Base at Brick Veneer (Sidewalk/Patio)
 Scale: 3" = 1'-0" Detail



3 Inside Corner - Brick Veneer to Siding Transition
 Scale: 3" = 1'-0" Detail



4 Window Sill at Brick Veneer
 Scale: 3" = 1'-0" Detail