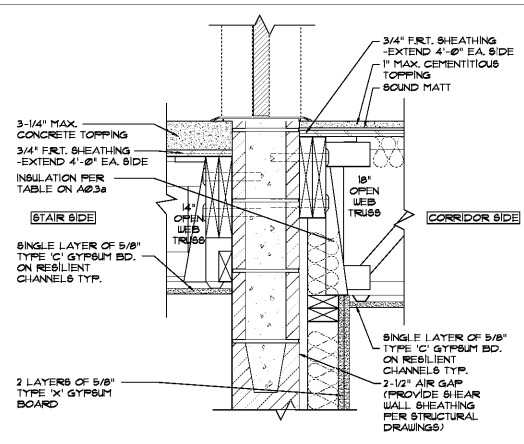
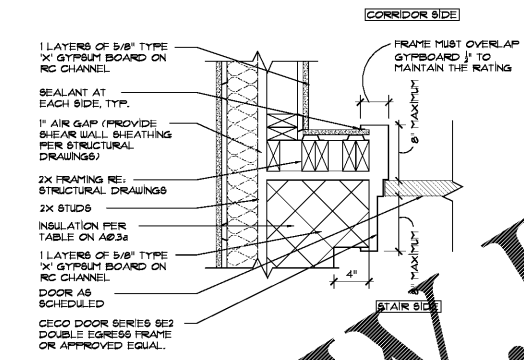


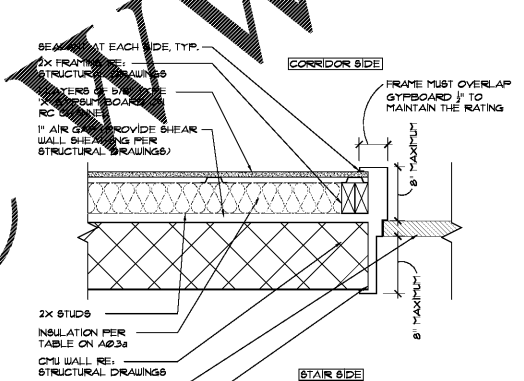
Order Plans @



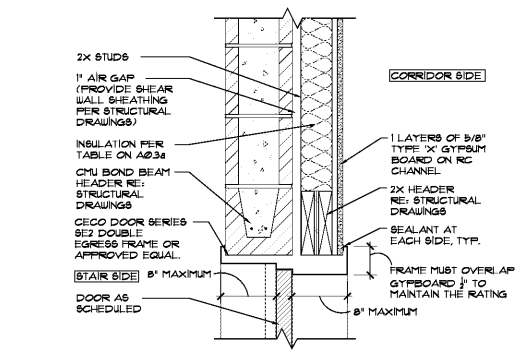
13 Typical Stair Wall at Threshold
Scale: 1-1/2" = 1'-0" Detail



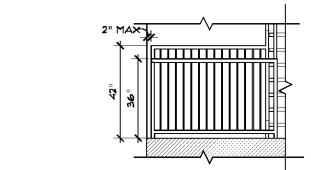
12 Typical Stair Door Jamb at Hinge Side
Scale: 1-1/2" = 1'-0" Detail



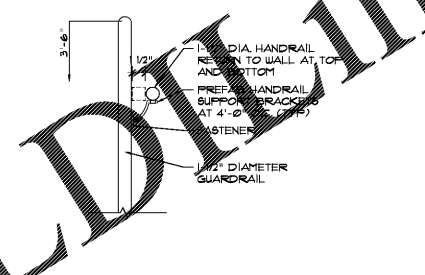
11 Typical Stair Door Jamb at Latch Side
Scale: 1-1/2" = 1'-0" Detail



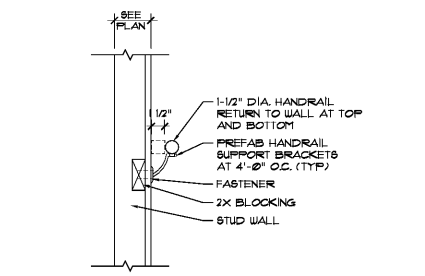
10 Typical Stair Door Head
Scale: 1-1/2" = 1'-0" Detail



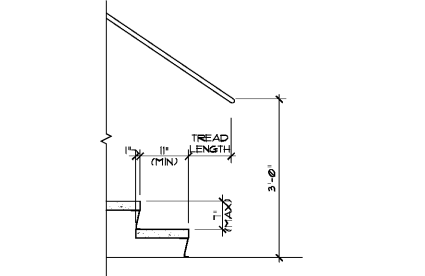
9 Cane Deflection Rail
Scale: 3/8" = 1'-0" Detail



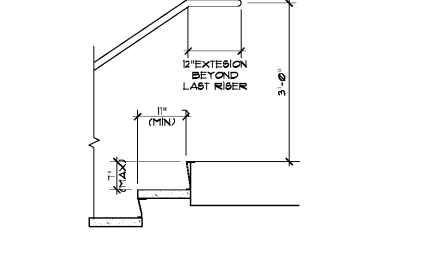
8 Typical Guardrail/Handrail Combination
Scale: 1-1/2" = 1'-0" Detail



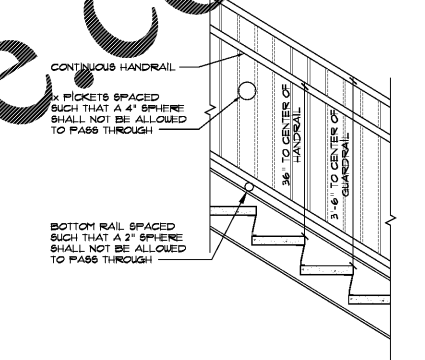
7 Typical Stud Wall Rail Clearance
Scale: 1-1/2" = 1'-0" Detail



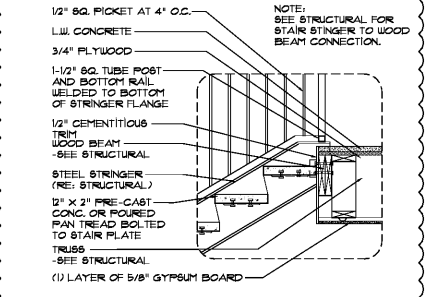
6 Typical Bottom Wall Rail
Scale: 3/4" = 1'-0" Detail



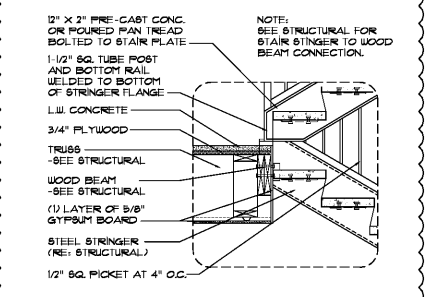
5 Typical Top Wall Rail
Scale: 3/4" = 1'-0" Detail



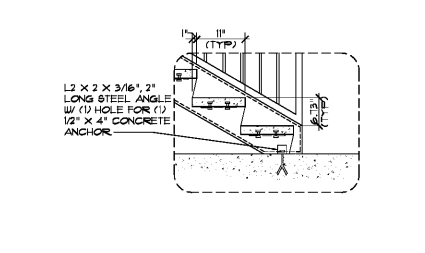
4 Typical Handrail/Guardrail Height
Scale: 3/4" = 1'-0" Detail



3 Typical Top Landing
Scale: 3/4" = 1'-0" Detail



2 Typical Center Landing at Wood Frame
Scale: 3/4" = 1'-0" Detail



1 Typical Bottom Landing at Concrete
Scale: 3/4" = 1'-0" Detail