

Paint Color Schedule		Material Schedule	
a	Cityscape (SW7067)	100	Brick
b	Gray Clouds (SW7658)	101	Brick Rowlock
c	Languid Blue (SW6224)	102	Brick Soldier
d	Extra White (SW7006)	103	Brick Window /Door Header (Soldier)
		104	Brick Window Sill (Rowlock)
		105	Cementitious 1X2 Trim
		106	Cementitious 1X3 Trim
		107	Cementitious 1X4 Trim
		108	Cementitious 1X6 Trim
		109	Cementitious 1X8 Trim
		110	Cementitious 1X10 Trim
		111	Cementitious 1X12 Trim
		112	Factory Milled Window
		113	Scheduled Door
		114	Scheduled Storefront



NOTES:  
 \* All finishes to be approved by owner.  
 \* All finishes and colors to return to trade corner, unless noted otherwise.  
 \* Metal bars and mechanical equipment will be screened from public view from adjoining properties, and from the abutting public streets.

Seal  
  
**ZPA**  
 MIDDLE & POOLE ARCHITECTURE  
 3734 WINTERFIELD ROAD, STE. 102  
 MIDLOTHIAN, VIRGINIA 23113  
 TELEPHONE 804.225.0215  
 WWW.ZPA.NET

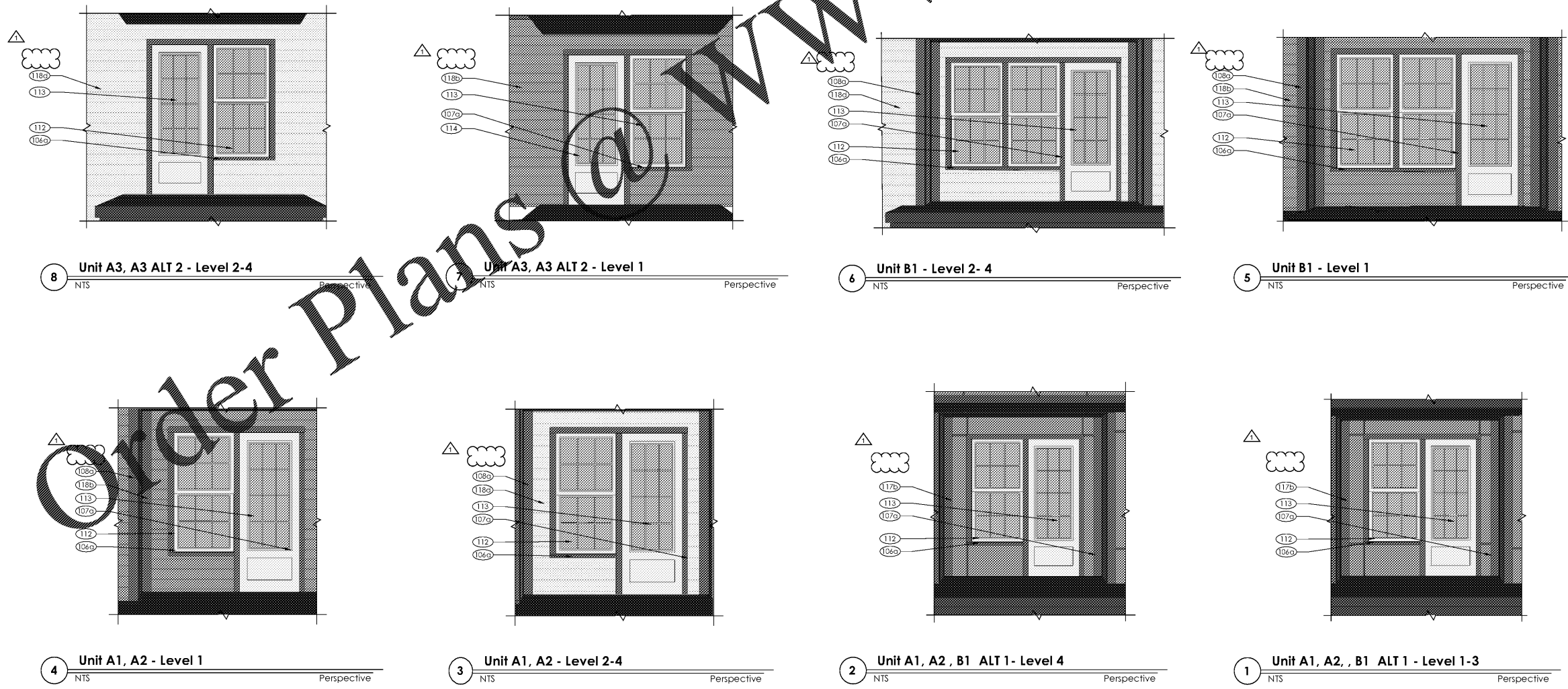
Project: 1928.00  
 CADD File: M5ELEV  
 Drawn By: NVK  
 Checked By: SGS  
 Permit Set Release Date: May 15, 2020  
 Construction Release Date: May 15, 2020

Revisions		
No.	Date	Description
1	03/19/21	Owner Com.

ASI / RFI Revisions		
No.	Date	Description

© 2021 Middle & Poole Architecture, LLC  
 Drawing and specifications are or will remain the property of Middle & Poole Architecture, LLC and shall not be used or reproduced in whole or part in any form without prior written consent of Middle & Poole Architecture, LLC.

**Borough 33**  
 an Apartment Community by  
 33 Broad MF, LLC  
 Chattanooga in Tennessee



8 Unit A3, A3 ALT 2 - Level 2-4  
NTS Perspective

7 Unit A3, A3 ALT 2 - Level 1  
NTS Perspective

6 Unit B1 - Level 2-4  
NTS Perspective

5 Unit B1 - Level 1  
NTS Perspective

4 Unit A1, A2 - Level 1  
NTS Perspective

3 Unit A1, A2 - Level 2-4  
NTS Perspective

2 Unit A1, A2, B1 ALT 1 - Level 4  
NTS Perspective

1 Unit A1, A2, B1 ALT 1 - Level 1-3  
NTS Perspective

Drawing Title:  
Balcony Perspectives

**A3.0c**

ISSUED FOR CONSTRUCTION