

GENERAL NOTES

1. Unit Plans are dimensioned to face of stud, unless noted otherwise. Typical framing is with 2x4 or 2x6 Wood Framing.
2. Interior Elevations are dimensioned to finish face of gypsum board, typical.
3. Coordinate project specific mechanical units with framing enclosure walls and fur down. Adjust as required. Contractor to verify before purchase of doors that 6'-0" door will provide adequate vertical access to project specific mechanical unit for servicing.
4. Coordinate project specific tub and shower units with framing opening dimensions. Adjust as required.
5. Kitchen base cabinets are 24" deep and 34.5" tall (except all type 'A' units where base cabinets to be 32.5" tall). Kitchen wall cabinets are 12" deep and 42" tall. Bath base cabinets are 21" deep and 32.2" tall typical.
6. Coordinate project specific tub and shower units with framing opening dimensions. Adjust as required.
7. All tub and shower areas shall be enclosed with moisture resistant Georgia-Pacific DensShield® The Backer board. If these walls are one hour rated then moisture resistant DensShield® The Backer board shall be used.
8. All floor finishes to be as noted on plans.
9. Typical 1x4 FJI base and door trim throughout unit. Paint-grade FJI at window sill (1x6), window apron (1x2), and bathroom base trim (1x4). Paint-grade shoe mould to match material at hard surfaces. Stain shoe mould at cabinets, run window sill and apron trim continuous in front of double windows, typical.
10. All bath and kitchen cabinets color selections to be per owner.
11. All bath and kitchen countertop color selections to be per owner.
12. All corner kitchen cabinets to be non-usable corner cabinets.
13. All cabinets with exposed end to be a finished end panel.
14. Brushed nickel exposed plumbing fixtures, door hardware (including hinges) and miscellaneous hardware, typical. Toilet accessories to be brushed nickel, typical.
15. All unit ceilings to have approved (by owner) smooth painted finish.
16. All interior unit walls to be approved (by owner) smooth painted finish surface gypsum board. Painted base trim caulked along all joints unless otherwise noted.
17. Each unit to be provided with one class ABC 5 pound portable fire extinguisher, in kitchen.
18. No medicine cabinets.
19. Entry Doors shown are to be held 6" off hinges side of wall, interior doors are held 2" off hinges side of wall, unless otherwise noted.
20. Contractor to verify microwave height (offset) specifications, and install microwave to maintain recommended clearance above cooktop. Adjust cabinet as required.
21. Contractor and Cabinet Sub-Contractor to coordinate final cabinet layout to be used with own approved appliance selections.
22. Where Removable Base Cabinets are required to be used, finishing to be kitchen cabinets. In addition, at all units file to extend 6" under outside face of cabinet in all directions except under dishwasher, refrigerator and stove/range.
23. All Group R-2 interior finishes to meet/exceed a minimum fire rating. All Group R-2 exterior finishes to meet/exceed a minimum fire rating.
24. All walls and floor/ceiling assemblies of unit walls and unit/pulldown doors, stairwell, amenity, etc.) shall achieve a minimum STC/C of 50 as required per code.
25. All vanity mirrors to be 42" high and run the full width of the vanity.
26. Ice maker (IM) to be located behind door, provide 18" x 24" x 24" cutout in noted wall.
27. All window heads and aprons shall be finished with a 1/2" x 1/2" x 1/2" square chamfered edge.
28. All changes in level at door sweeps and thresholds at doorways intended for user passage shall comply with 2010 ADA, Section 303.
29. Provide typical black metal matched trim/knobs in unit plans per typical details in A0.5 series.
30. Shower glass to be 6" thick tempered glass typical.
31. All interior doors to be finished end panel.
32. Provide 2" FJI and 1/2" x 1/2" x 1/2" square chamfered edge.

ACCESSIBILITY DIAGRAM NOTES

1. [Symbol] indicates removable base cabinet.
2. [Symbol] indicates 30"x48" clear floor space of appliances and fixtures.
3. [Symbol] indicates 30"x48" clear floor space outside of door swing.
4. [Symbol] indicates 30"x60" clear floor space in front of tub with a parallel approach.
5. At resident's request, remove laundry room door(s) for additional clearance.

REFLECTED CEILING PLAN LEGEND

- [Symbol] Coverplate for future fixture
- [Symbol] Surface-mounted light fixture (large fixture-mounting plate shown at dining room)
- [Symbol] Exhaust Fan/ Light Combo
- [Symbol] Pendant light fixture
- [Symbol] Ceiling Fan/Light

Notes:
 1. Ceiling fans, light, or fixtures to be centered in room, closet, or hallway, unless otherwise noted.
 2. Pendant lighting to be centered in kitchen island wall below. See RCP for spacing.

Seal

 March 19, 2021
ZPA
POOLE & POOLE ARCHITECTURE
 3736 Winterfield Road, Suite 102
 Midlothian, Virginia 23113
 Telephone 804.275.0215
 www.zpa.net

Project: 1928.00
 CADD File: MSUN-C1
 Drawn By: AD
 Checked By: LM
 Permit Release: May 15, 2020
 Construction Release Set: May 15, 2020
 Revisions:
 No. Date Description
 1 03/19/21 Owner Comment

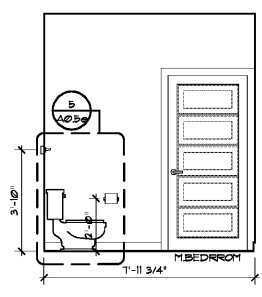
ASI / RFI Revisions
 No. Date Description
 © 2019 Poole & Poole Architecture, LLC
 All rights reserved. No part of this document may be reproduced or transmitted in any form or by any means electronic or mechanical, including photocopying, recording, or by any information storage and retrieval system, without the prior written consent of Poole & Poole Architecture, LLC.

Borough 33
 an Apartment Community by
 33 Broad MF, LLC
 in Chattanooga, Tennessee

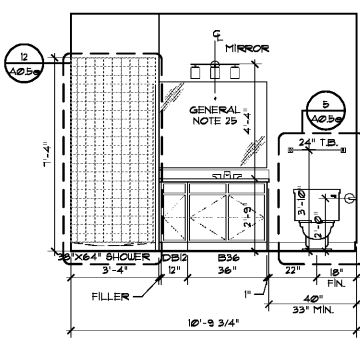
Drawing Title:
 UNIT C1
 Floor Plan, Interior Elevations
 & General Notes

A1.9a

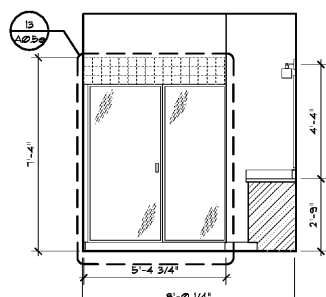
ISSUED FOR CONSTRUCTION



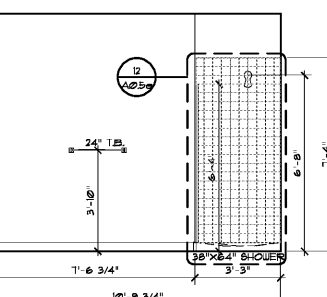
15 Bathroom #2
 Scale: 3/8" = 1'-0"
 Elevation



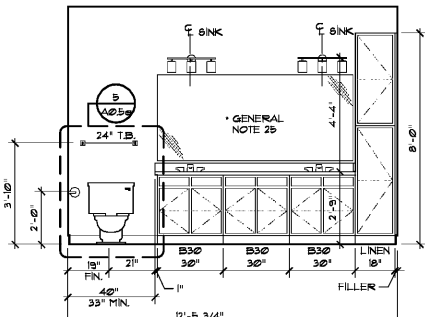
14 Bathroom #2
 Scale: 3/8" = 1'-0"
 Elevation



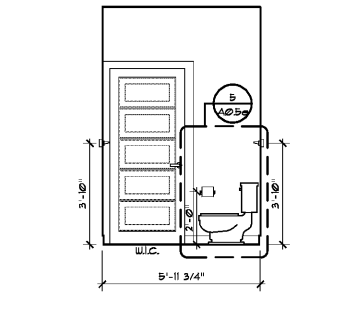
13 Bathroom #2
 Scale: 3/8" = 1'-0"
 Elevation



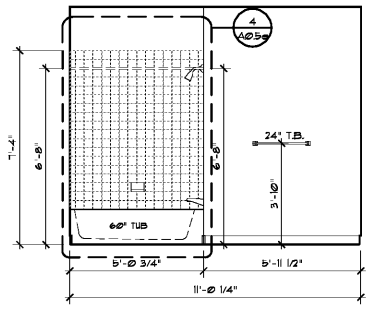
12 Bathroom #2
 Scale: 3/8" = 1'-0"
 Elevation



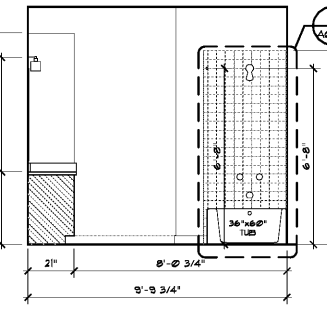
11 Master Bathroom
 Scale: 3/8" = 1'-0"
 Elevation



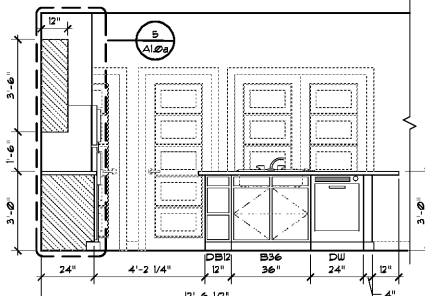
10 Master Bathroom
 Scale: 3/8" = 1'-0"
 Elevation



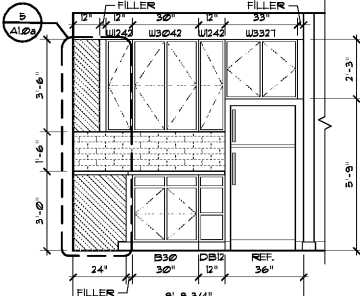
9 Master Bathroom
 Scale: 3/8" = 1'-0"
 Elevation



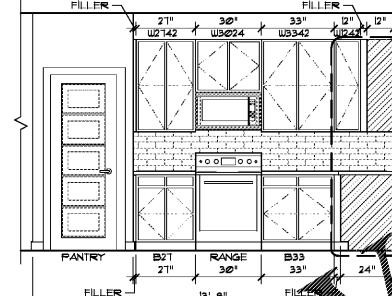
8 Master Bathroom
 Scale: 3/8" = 1'-0"
 Elevation



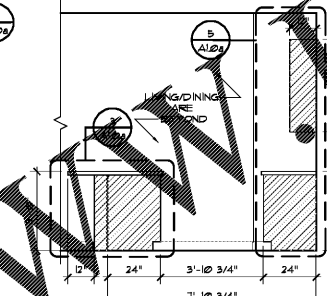
7 Kitchen
 Scale: 3/8" = 1'-0"
 Elevation



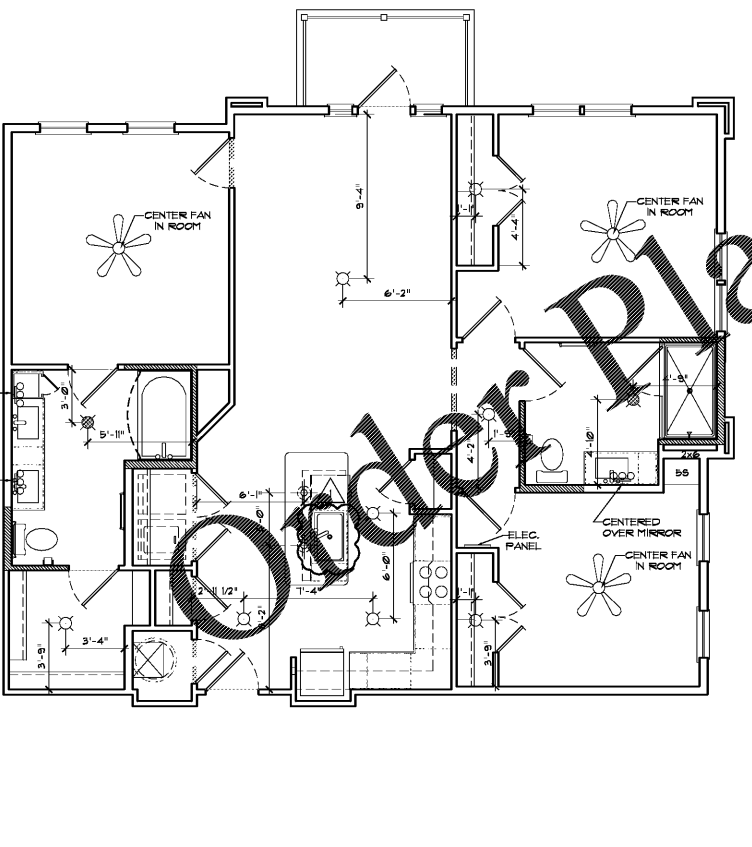
6 Kitchen
 Scale: 3/8" = 1'-0"
 Elevation



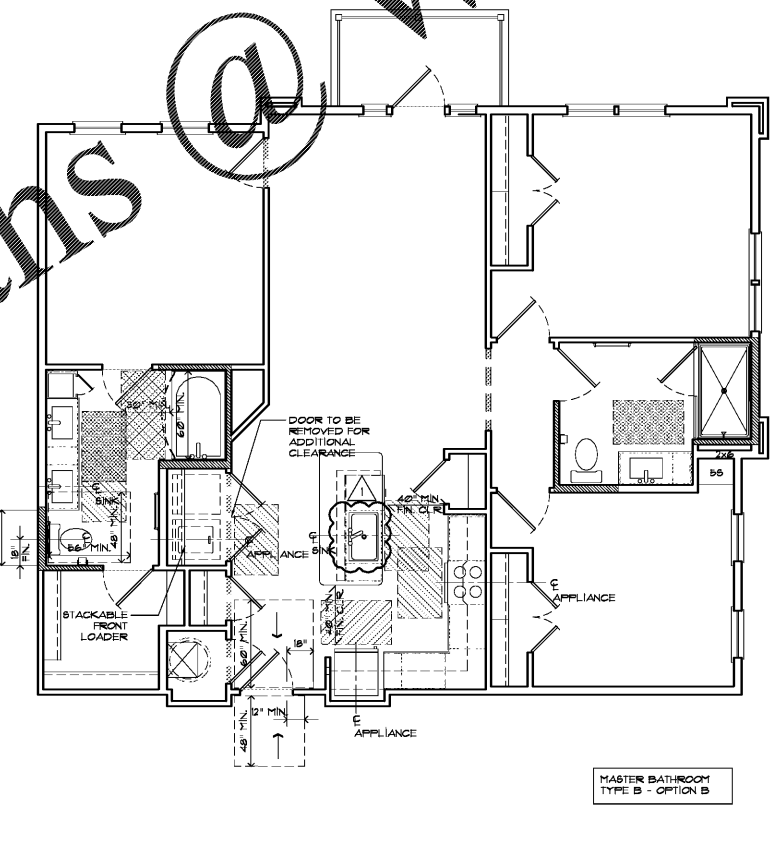
5 Kitchen
 Scale: 3/8" = 1'-0"
 Elevation



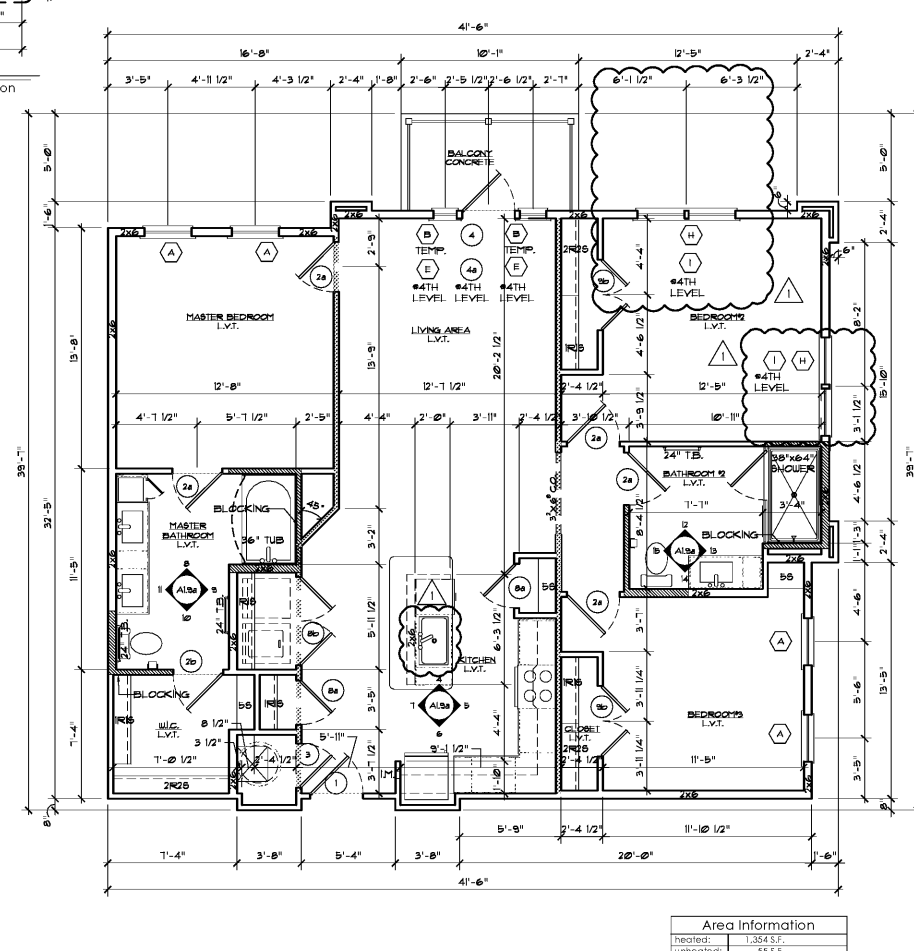
4 Kitchen
 Scale: 3/8" = 1'-0"
 Elevation



3 Unit C1 - Reflected Ceiling Plan
 Scale: 1/4" = 1'-0"
 Plan



2 Unit C1 - Mobility Feature Diagram
 Scale: 1/4" = 1'-0"
 Plan



1 Unit C1 - Standard Unit
 Scale: 1/4" = 1'-0"
 Plan

Area Information	
heated:	1,384 S.F.
unheated:	85 S.F.
total:	1,469 S.F.