

GENERAL NOTES

1. Unit Plans are dimensioned to face of stud, unless noted otherwise. Typical framing is with 2x4 or 2x6 Wood Framing.
2. Interior Elevations are dimensioned to finish face of gypsum board.
3. Coordinate project specific manufacturers dimensions required for all hardware with size of mechanical closets and mechanical closet doors before building enclosure walls and fur downs. Adjust as required. Contractor to verify before purchase of doors that a 6'-0" door will provide adequate vertical access to project specific mechanical unit for servicing.
4. Coordinate project specific tub and shower units with framing openings dimensioned. Adjust as required.
5. Kitchen base cabinets are 24" deep and 34.5" tall (except at type 'A' units where base cabinets to be 32.5" tall). Kitchen wall cabinets are 12" deep and 42" tall. Bath base cabinets are 21" deep and 32.2" tall.
6. Ventilated wire shelves are typical and noted as either wire shelves or Shelf and Rod wire shelves per ClosetMaid®. 1R1S abbreviates one rod/one shelf. 1R2S abbreviates one rod/two shelves. 2R2S abbreviates two rods/two shelves.
7. All tub and shower areas shall be enclosed with moisture resistant Georgia-Pacific DensShield® The Backer board. If these walls are one hour rated then moisture resistant Georgia-Pacific 5/8" DensShield® F Reguard® The Backer board shall be used.
8. All floor finishes to be as noted on plans.
9. Typical 1x4 FJI base and door trim throughout unit. Paint-grade FJI at window sill (1x6), window apron (1x2), and bathroom base trim (1x4). Paint-grade shoe mould to match material at hard surfaces. Stain shoe mould at cabinets. Run window sill and apron trim continuous in front of double windows. Typical.
10. All bath and kitchen cabinets color selections to be per owner.
11. All bath and kitchen countertop color selections to be per owner.
12. All corner kitchen cabinets to be non-usable corner cabinets.
13. All cabinets with exposed end to be a finished end panel.
14. Brushed nickel exposed plumbing fixtures, door hardware (including hinges) and miscellaneous hardware, typical. Toilet accessories to be brushed nickel, typical.
15. All unit ceilings to have approved (by owner) smooth painted finish.
16. All interior unit walls to be approved (by owner) smooth painted finish surface gypsum board. Smooth painted base trim caulked along all joints unless otherwise noted.
17. Each unit to be provided with one class ABC 5 pound portable fire extinguisher. In kitchen.
18. No medicine cabinets.
19. Entry Doors shown are to be held 6" off hinges side of wall, interior doors are held 3/4" off hinge side of wall, unless otherwise noted.
20. Contractor to verify microwave height [offset] specifications, and install microwave to manufacturer's recommended clearance above cooktop. Adjust cabinet as required.
21. Contractor and Cabinet Sub-Contractor to coordinate final cabinet layout. Use only approved appliance selections.
22. Where Removable Base Cabinets are required per plan, finishing to be per plan. In addition, all unit files to extend 6" under outside face of cabinet in all directions to meet/dish out/adjust/repair and sove/engage.
23. All Group R-2 interior finishes to meet/exceed a minimum Class B fire rating. All Group R-2 exterior finishes to meet/exceed a minimum Class B fire rating.
24. All walls and floor/ceiling assemblies of unit/rooms and unit/public area (stair, stairwell, amenity, etc.) shall achieve a minimum STC/IC of 50 as required per code.
25. All vanity mirrors to be 42" high and run the full length of the vanity.
26. Ice maker (MI) to be located in plan. Provide 12" x 12" cutout in wall shown in rated wall.
27. All window heads and jambs to have drywall return.
28. All changes in level at door sills and thresholds at doorways intended for user passage shall comply with 2010 ADA Section 303.
29. Provide 1/2" black flat hatched hatched hatched in unit plans per typical details in A0.5 series.
30. Shower glass panels to be 3/8" thick tempered glass typical.
31. All doors to be 1 3/4" thick.
32. Provide 2" faux brick windows.


ACCESSIBILITY DIAGRAM NOTES

1. [Symbol] indicates removable base cabinet.
2. [Symbol] indicates 30"x48" clear floor space of appliances and fixtures.
3. [Symbol] indicates 30"x48" clear floor space outside of door swing.
4. [Symbol] indicates 30"x40" clear floor space in front of tub with a parallel approach.
5. At resident's request, remove laundry room door(s) for additional clearance.

REFLECTED CEILING PLAN LEGEND

- | | |
|---|--------------------------------|
| [Symbol] Coverplate for future fixture | [Symbol] Pendant light fixture |
| [Symbol] Surface-mounted light fixture (large surface-mounted light fixture at ceiling) | [Symbol] Ceiling Fan/Light |
| [Symbol] Exhaust Fan/ Light Combo | |

- Notes:
1. Ceiling fans, light, or fixtures to be centered in room, closet, or hallway, unless otherwise noted.
 2. Pendant lighting to be centered on kitchen island wall below. See RCP for spacing.



May 15, 2020

ZPA

POOLE & POOLE ARCHITECTURE
3736 Winterfield Road, Suite 102
Midlothian, Virginia 23113
Telephone 804.225.0215
www.zpa.net

Project:	1710.00
CADD File:	MSUN-B3
Drawn By:	AD
Checked By:	LM
Permit Release:	May 15, 2020
Construction Release Set:	May 15, 2020

Revisions		
No.	Date	Description

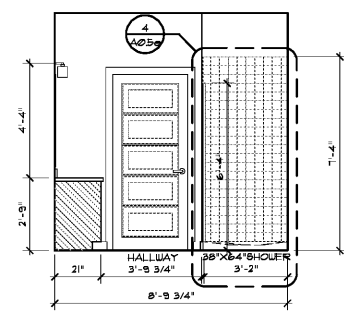
ASI / RFI Revisions		
No.	Date	Description

© 2019 Poole & Poole Architecture, LLC
Drawings and specifications are not to be used for any project without the written consent of Poole & Poole Architecture, LLC.

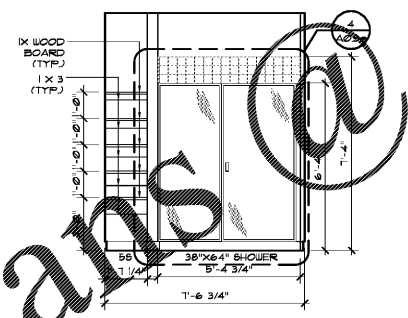
Borough 33
an Apartment Community by
33 Broad MF, LLC
in Chattanooga, Tennessee

Drawing Title:
UNIT B3
Floor Plan, Interior Elevations
& General Notes

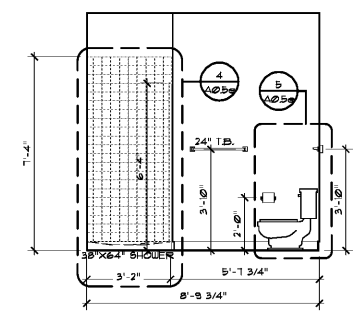
A1.8b



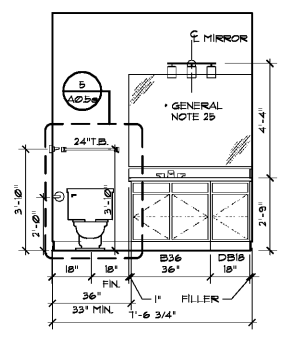
8 Bathroom #2
Scale: 3/8" = 1'-0"
Elevation



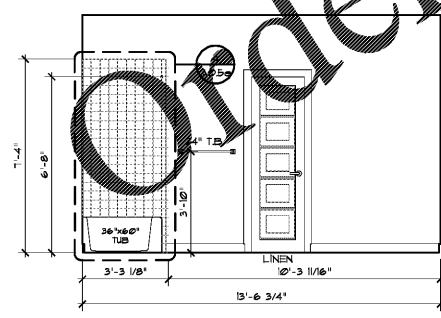
7 Bathroom #2
Scale: 3/8" = 1'-0"
Elevation



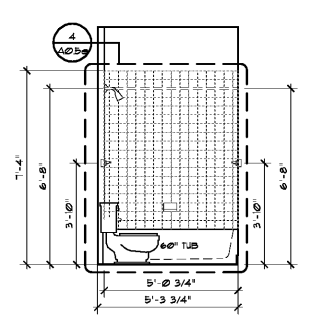
6 Bathroom #2
Scale: 3/8" = 1'-0"
Elevation



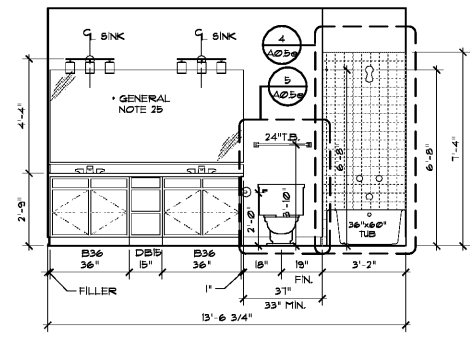
5 Bathroom #2
Scale: 3/8" = 1'-0"
Elevation



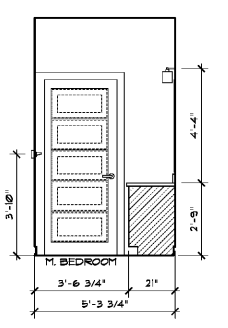
4 Master Bathroom
Scale: 3/8" = 1'-0"
Elevation



3 Master Bathroom
Scale: 3/8" = 1'-0"
Elevation



2 Master Bathroom
Scale: 3/8" = 1'-0"
Elevation



1 Master Bathroom
Scale: 3/8" = 1'-0"
Elevation

WWW.LDILLIEN.COM

Order Plans