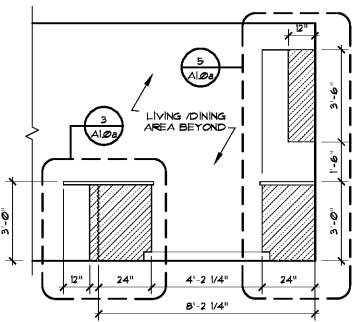
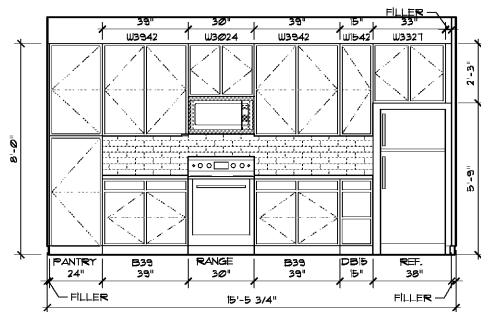


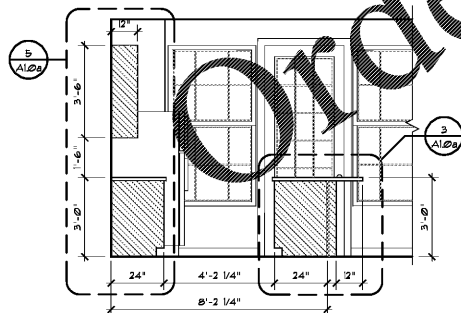
7 Kitchen
Scale: 3/8" = 1'-0"
Elevation



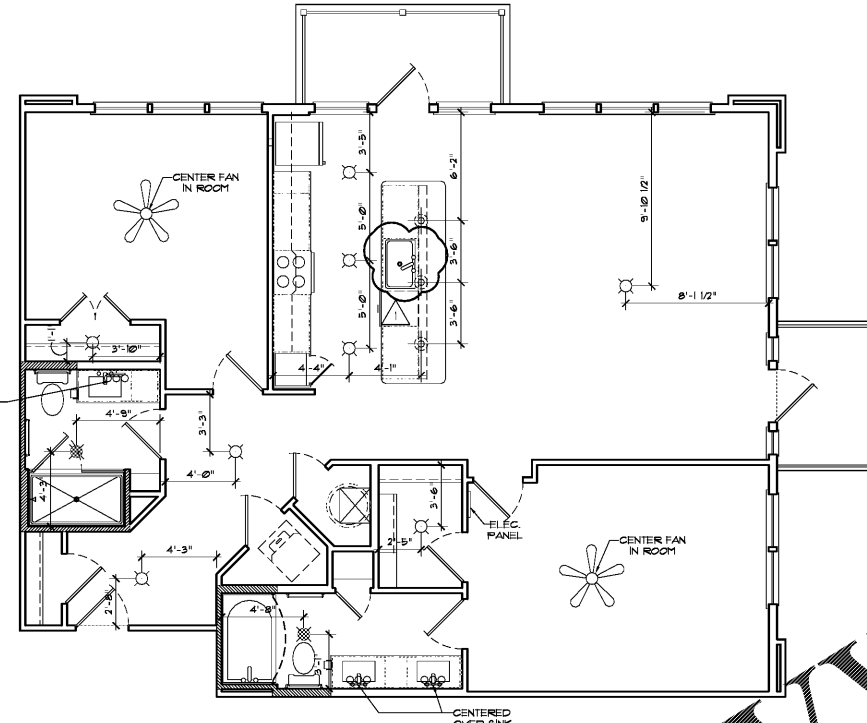
6 Kitchen
Scale: 3/8" = 1'-0"
Elevation



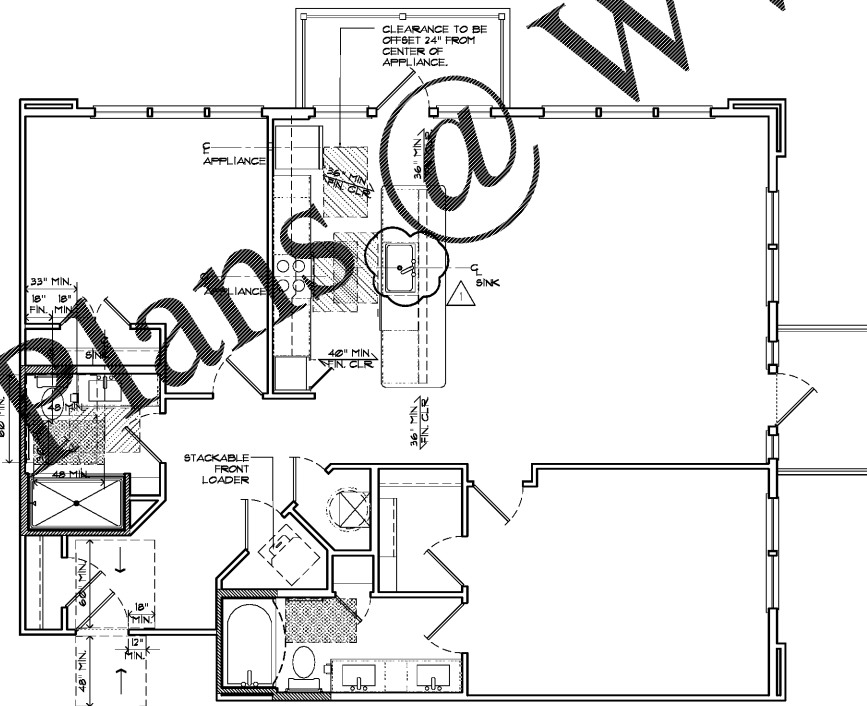
5 Kitchen
Scale: 3/8" = 1'-0"
Elevation



4 Kitchen
Scale: 3/8" = 1'-0"
Elevation



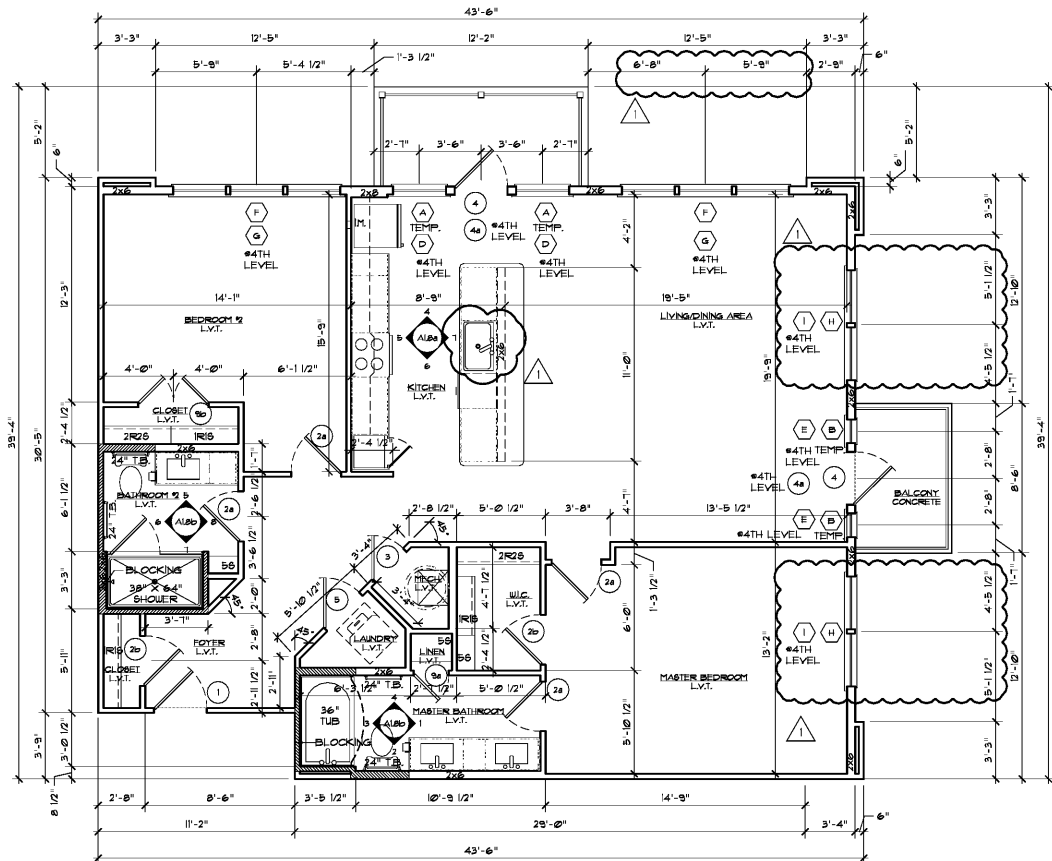
3 Unit B3 - Reflected Ceiling Plan
Scale: 1/4" = 1'-0"



2 Unit B3 - Mobility Feature Diagram
Scale: 1/4" = 1'-0"

BATHROOM #2
TYPE B - OPTION B

Plan



1 Unit B3 - Standard Unit
Scale: 1/4" = 1'-0"

NOTE: SEE STANDARD UNIT ON A1.7a FOR DIMENSIONING AND INTERIOR ELEVATIONS UNLESS OTHERWISE SHOWN.	Area Information Heated: 1,141 S.F. Unheated: 114 S.F. Total: 1,256 S.F.
--	---

Plan

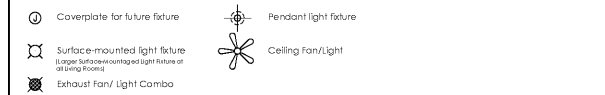
GENERAL NOTES

- Unit Plans are dimensioned to face of stud, unless noted otherwise. Typical framing is with 2x4 or 2x6 Wood Framing.
- Interior Elevations are dimensioned to finish face of gypsum board, typical.
- Coordinate project specific manufacturers dimensions required for all hardware with size of mechanical closets and mechanical closer doors before building enclosure walls and fur downs. Adjust as required. Contractor to verify before purchase of doors that a 6'-0" door will provide adequate vertical access to project specific mechanical unit for servicing.
- Coordinate project specific tub and shower units with framing openings dimensioned. Adjust as required.
- Kitchen base cabinets are 24" deep and 34.5" tall (except at type 'A' units where base cabinets to be 32.5" tall). Kitchen wall cabinets are 12" deep and 42" tall. Bath base cabinets are 21" deep and 32" tall typical.
- Ventilated wire shelves are typical and noted as either wire shelves or Shelf and Rod wire shelves per ClosetMaid®. 1R1S abbreviates one rod/one shelf, 1R2S abbreviates one rod/two shelves, 2R2S abbreviates two rods/two shelves.
- All tub and shower areas shall be enclosed with moisture resistant Georgia-Pacific DensShield® The Backer Board. If these walls are one hour rated then moisture resistant Georgia-Pacific 5/8" DensShield® Fireguard® The Backer Board shall be used.
- All floor finishes to be as noted on plans.
- Typical 1M FJI base and door trim throughout unit. Paint-grade FJI at window sill (1x6), window apron (1x2), and bathroom base trim (1x4). Paint-grade shoe mould to match material at hard surfaces. Stain shoe mould at cabinets, run window sill and apron trim continuous in front of double windows, typical.
- All bath and kitchen cabinet color selections to be per owner.
- All bath and kitchen countertops color selections to be per owner.
- All corner kitchen cabinets to be non-usable corner cabinets.
- All cabinets with exposed end to be a finished end panel.
- Brushed nickel exposed plumbing fixtures, door hardware (including hinges) and miscellaneous hardware, typical. Toilet accessories to be brushed nickel, typical.
- All unit ceilings to have approved (by owner) smooth painted finish.
- All interior unit walls to be approved (by owner) smooth painted finish surface gypsum board with painted base film caulked along all joints unless otherwise noted.
- No medicine cabinets.
- Entry Doors shown are to be held 6" off hinges side of wall, interior doors are held 2" off hinge side of wall, unless otherwise noted.
- Contractor to verify microwave height (offset) specifications, and install microwave to manufacturer's recommended clearance above countertop. Adjust cabinet as required.
- Contractor and Cabinet Sub-Contractor to coordinate final cabinet layout, use of approved appliance selections.
- Where Removable Base Cabinets are required per plan, finishing to be installed over panels. In addition, all unit files to extend 6" under outside face of cabinet in all directions to provide clearance for repair and rework.
- All Group R-2 interior finishes to meet/exceed a minimum R-2. All Group R-2 exterior finishes to meet/exceed a minimum R-2.
- All walls and floor/ceiling assemblies of unit walls and unit/pulley (stair, stairwell, amenity, etc.) shall achieve a minimum STC/ILC of 50 as required per code.
- All vanity mirrors to be 42" high and run the full width of the vanity.
- Ice maker (IM) to be located in plan, provide 12" x 12" cutout in noted wall.
- All window heads and panes to be drywall return.
- All changes in level at or above and thresholds at doorways intended for user passage shall comply with 2010 ADA, Section 303.
- Provide hatched block at hatched thresholds in unit plans per typical details in A0.5 series.
- Shower panes to be 1/2" thick tempered glass typical.
- All doors to be 2 1/4" thick.
- Provide 2" faux wood blinds on windows.

ACCESSIBILITY DIAGRAM NOTES

- Indicates removable base cabinet.
- Indicates 30"x48" clear floor space of appliances and fixtures.
- Indicates 30"x48" clear floor space outside of door swing.
- Indicates 30"x40" clear floor space in front of tub with a parallel approach.
- At resident's request, remove laundry room door(s) for additional clearance.

REFLECTED CEILING PLAN LEGEND



- Notes:
- Ceiling fans, lights, or fixtures to be centered in room, closet, or hallway, unless otherwise noted.
 - Pendant lighting to be centered on kitchen island wall below. See RCP for spacing.

Seal

 March 19, 2021
ZPA
POOLE & POOLE ARCHITECTURE
 3736 Winterfield Road, Suite 102
 Midlothian, Virginia 23113
 Telephone 804.225.0215
 www.zpa.net
 Project: 1928.00
 CADD File: MSUN-B3
 Drawn By: AD
 Checked By: LM
 Permit Released: May 15, 2020
 Construction Release Set: May 15, 2020
 Revisions

No.	Date	Description
1	03/19/21	Owner Comments

 ASI / RFI Revisions

No.	Date	Description
-----	------	-------------

 © 2019 Poole & Poole Architecture, LLC
 Drawings and specifications are the property of Poole & Poole Architecture, LLC and shall not be used for any other project without the prior written consent of Poole & Poole Architecture, LLC.

Borough 33
 an Apartment Community by
 33 Broad MF, LLC
 in Chattanooga, Tennessee

Drawing Title:
 UNIT B3
 Floor Plan, Interior Elevations
 & General Notes

A1.8a

ISSUED FOR CONSTRUCTION