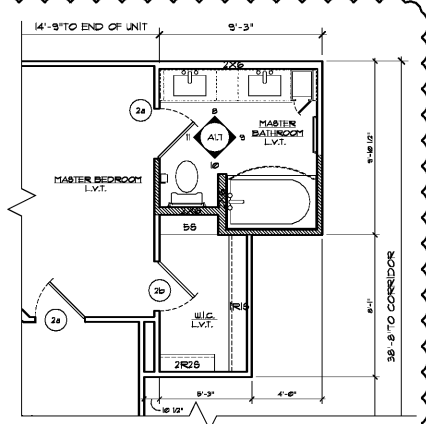


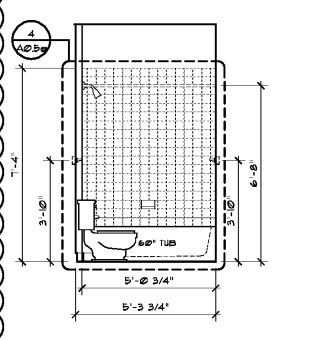
Area Information	
heated:	1,203 S.F.
unheated:	71 S.F.
total:	1,274 S.F.

NOTE: SEE STANDARD UNIT ON A1.7 FOR DIMENSIONING AND INTERIOR ELEVATIONS UNLESS OTHERWISE SHOWN.

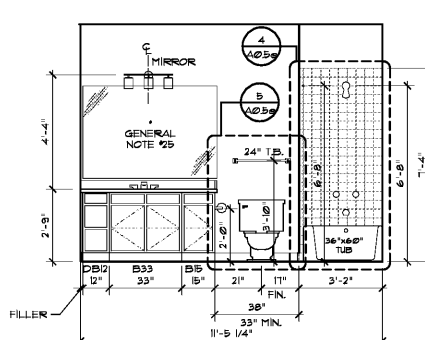
16 Unit B2 - ALT 1  
Scale: 1/4" = 1'-0"



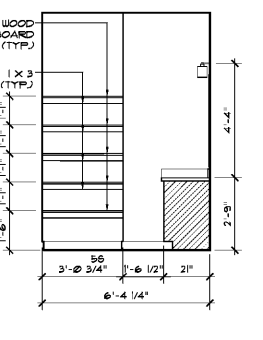
15 Bathroom #2  
Scale: 3/8" = 1'-0"



14 Bathroom #2  
Scale: 3/8" = 1'-0"



13 Bathroom #2  
Scale: 3/8" = 1'-0"



GENERAL NOTES

- Unit Plans are dimensioned to face of stud, unless noted otherwise. Typical framing is with 2x4 or 2x6 Wood Framing.
- Interior Elevations are dimensioned to finish face of gypsum board, typical.
- Coordinate project specific mechanical dimensions required for air handler with size of mechanical closets and mechanical close doors before building enclosure walls and fur downs. Adjust as required. Contractor to verify before purchase of doors that a 6'-0" door will provide adequate vertical access to project specific mechanical unit for servicing.
- Coordinate project specific tub and shower units with framing opening dimensions. Adjust as required.
- Kitchen base cabinets are 24" deep and 34.5" tall (except for type 'A' units where base cabinets to be 32.5" tall). Kitchen wall cabinets are 12" deep and 42" tall. Bath base cabinets are 21" deep and 32" tall typical.
- Coordinate project specific tub and shower units with framing opening dimensions. Adjust as required.
- Kitchen wall cabinets are 12" deep and 42" tall. Bath base cabinets are 21" deep and 32" tall typical.
- 1R1S abbreviates one rod/one shelf. 1R2S abbreviates one rod/two shelves. 2R2S abbreviates two rods/two shelves.
- All tub and shower areas shall be enclosed with moisture resistant Georgia-Pacific DensShield® The Backer board. If these walls are one hour rated use moisture resistant Georgia-Pacific S9® DensShield® Frequent® The Backer board shall be used.
- All floor finishes to be as noted on plans.
- Typical 1x4 FJI base and door trim throughout unit. Paint-grade FJI at window sill (1x6), window apron (1x2), and bathroom base trim (1x4). Paint-grade shoe mold to match material at hard surfaces. Stain shoe mold at cabinets, run window sill and apron trim continuous in front of double windows, typical.
- All bath and kitchen cabinets color selections to be per owner.
- All bath and kitchen countertops color selections to be per owner.
- All corner kitchen cabinets to be non-usable corner cabinets.
- All cabinets with exposed end to be a finished end panel.
- Brushed nickel exposed plumbing fixtures, door hardware (including hinges) and miscellaneous hardware, typical. Toilet accessories to be brushed nickel, typical.
- All unit ceilings to have approved (by owner) smooth painted finish.
- All interior unit walls to be approved (by owner) smooth painted finish surface gypsum board. Smooth painted base trim caulked along all joints unless otherwise noted.
- Each unit to be provided with one class ABC 5 pound portable fire extinguisher, in kitchen.
- No medicine cabinets.
- Entry Doors shown are to be held 6" off hinges side of wall, interior doors are held 2" off hinges side of wall, unless otherwise noted.
- Contractor to verify microwave height (labeled) specifications, and install microwave to maintain recommended clearance above countertop. Adjust cabinet as required.
- Contractor and Cabinet Sub-Contractor to coordinate final cabinet layout to be used with owner approved appliance selections.
- Where Removable Base Cabinet are required per plan, finish cabinet to be used with owner approved appliance selections. In addition, all unit finishes to extend 6" under outside face of cabinet in all directions counter dishwasher, refrigerator and stove/oven.
- All Group R-2 interior finishes to meet/exceed a Class B fire rating. All Group R-2 exterior finishes to meet/exceed a Class B fire rating.
- All walls and floor/ceiling assemblies of unit(s) and unit/public area(s) shall achieve a minimum STC/RC of 50 as required per code.
- All vanity mirrors to be 42" high and run the full width of the vanity.
- Ice maker (IM) to be backlogged drain, provide 1/2" x 3/4" x 3/4" drain shown in rated wall.
- All window heads and sills to be finished with a 1/2" x 3/4" x 3/4" drain shown in rated wall.
- All changes in level at or above and thresholds at doorways intended for user passage shall comply with 2010 ADA, Section 303.
- Provide typical black or matched trim/moldings in unit plans per typical details in A0.5 series.
- Shower glass to be 1/2" thick tempered glass typical.
- All glass to be 1/2" thick tempered glass typical.
- Provide 2" Faux wood blinds on windows.

ACCESSIBILITY DIAGRAM NOTES

- Indicates removable base cabinet.
- Indicates 30"x48" clear floor space of appliances and fixtures.
- Indicates 30"x48" clear floor space outside of door swing.
- Indicates 30"x60" clear floor space in front of tub with a parallel approach.
- At resident's request, remove laundry room door(s) for additional clearance.

REFLECTED CEILING PLAN LEGEND

- Coverplate for future fixture
- Surface-mounted light fixture (large fixture-mounting holes at ceiling)
- Exhaust Fan/ Light Combo
- Pendant light fixture
- Ceiling Fan/Light

Notes:  
1. Ceiling fans, lights, or fixtures to be centered in room, closet, or hallway, unless otherwise noted.  
2. Pendant lighting to be centered on kitchen island wall below. See RCP for spacing.

Seal  
  
 March 19, 2021  
**P. POOLE & P. POOLE ARCHITECTURE**  
 3736 Winterfield Road, Suite 102  
 Middletown, Virginia 23113  
 Telephone 804.225.0215  
 www.ppa.net

Project:	1928.00
CADD File:	MSUN-B2
Drawn By:	AD
Checked By:	LM
Permit Release:	May 15, 2020
Construction Release Set:	May 15, 2020
Revisions	
No. Date Description	
1 03/19/21	Owner Comments
ASI / RFI Revisions	
No. Date Description	

© 2019 Poole & Poole Architecture, LLC  
 All rights reserved. No part of this drawing may be reproduced or transmitted in any form or by any means electronic, mechanical, photocopying, recording, or by any information storage and retrieval system, without the prior written permission of Poole & Poole Architecture, LLC.

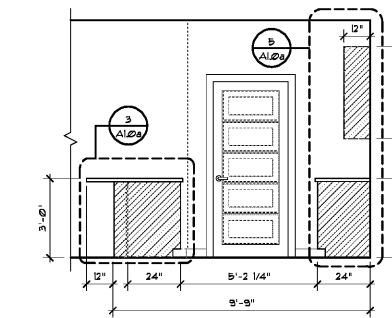
**Borough 33**  
 an Apartment Community by  
 33 Broad MF, LLC  
 in Chattanooga, Tennessee

Drawing Title:  
 UNIT B2  
 Floor Plan, Interior Elevations  
 & General Notes

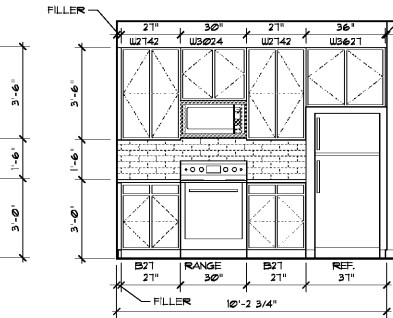
**A1.7**

ISSUED FOR CONSTRUCTION

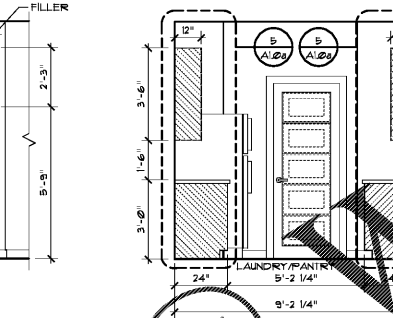
7 Kitchen  
Scale: 3/8" = 1'-0"



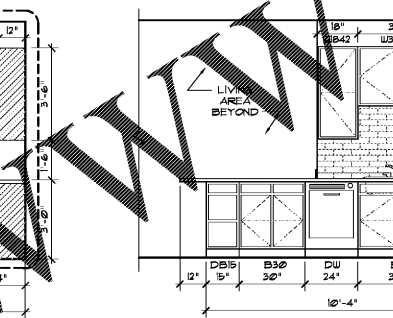
6 Kitchen  
Scale: 3/8" = 1'-0"



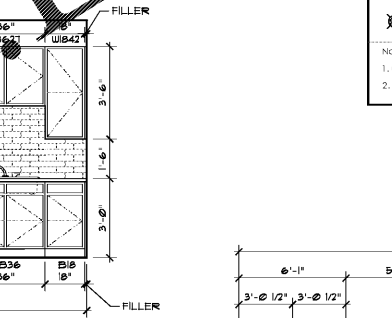
5 Kitchen  
Scale: 3/8" = 1'-0"



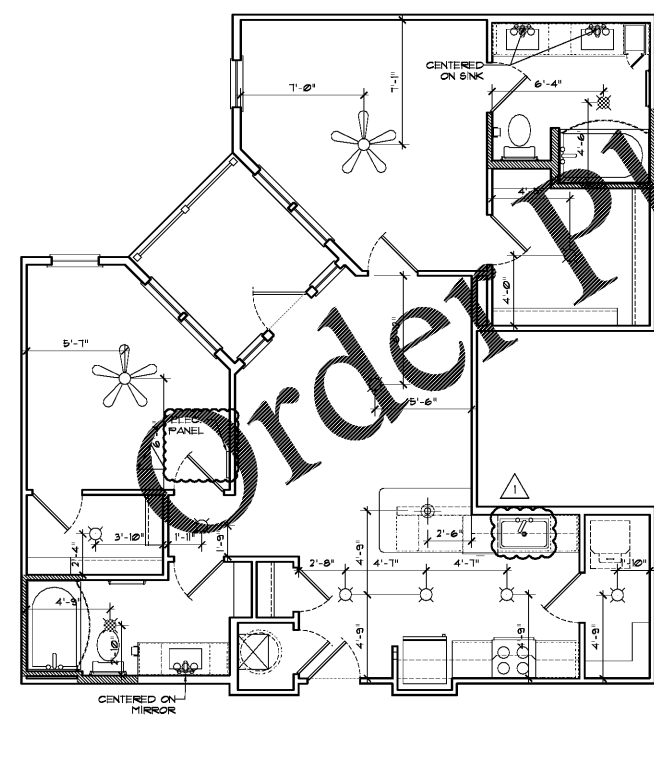
4 Kitchen  
Scale: 3/8" = 1'-0"



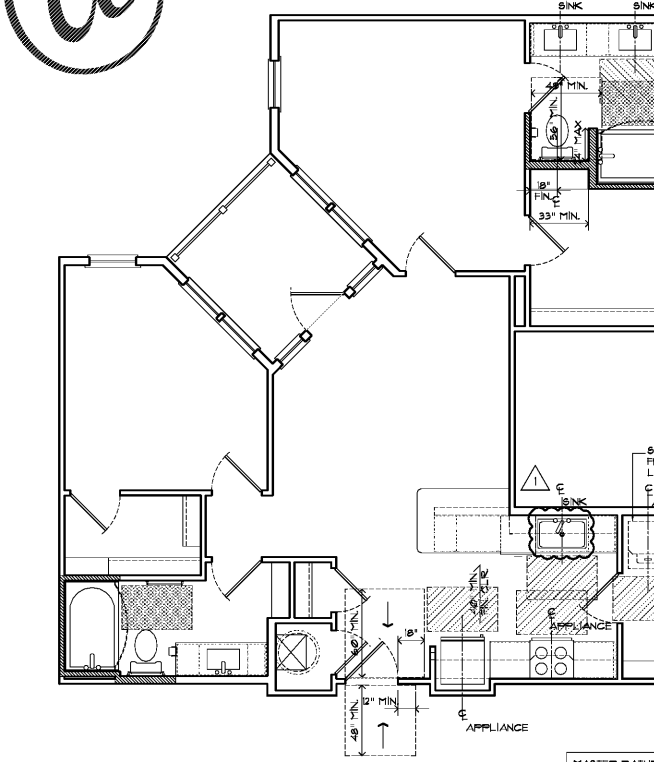
3 Kitchen  
Scale: 3/8" = 1'-0"



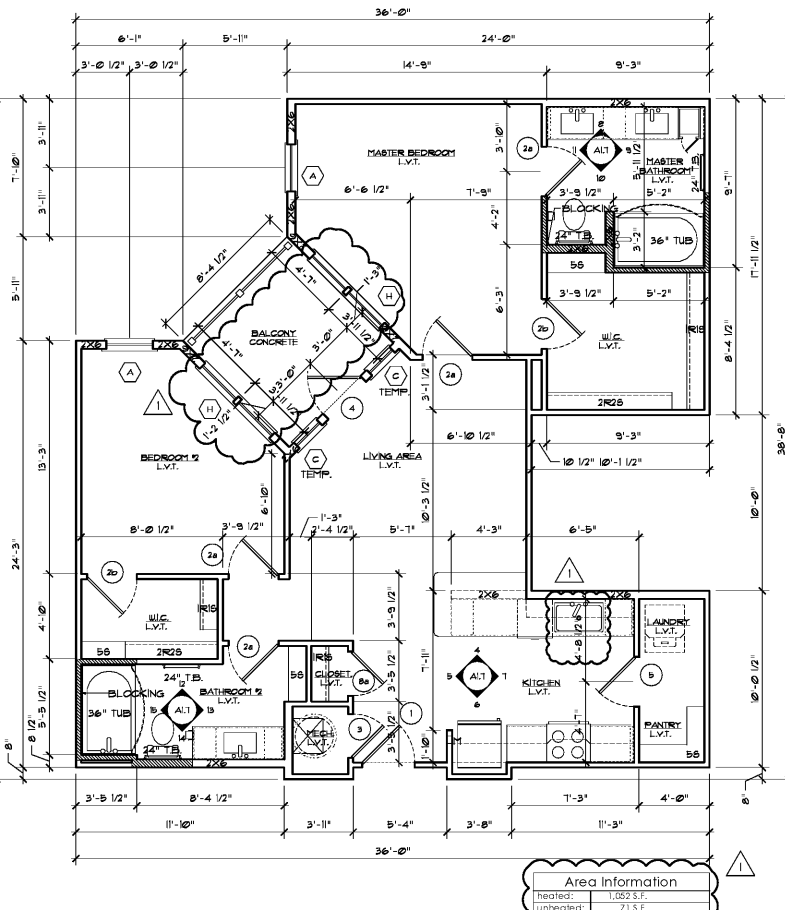
3 Unit B2 - Reflected Ceiling Plan  
Scale: 1/4" = 1'-0"



2 Unit B2 - Mobility Feature Diagram  
Scale: 1/4" = 1'-0"



1 Unit B2 - Standard Unit  
Scale: 1/4" = 1'-0"



Area Information	
heated:	1,203 S.F.
unheated:	71 S.F.
total:	1,274 S.F.

Order Plans @

WWW.PPDARCH.COM