

# GENERAL NOTES

- Unit Plans are dimensioned to face of stud, unless noted otherwise. Typical framing is with 2x4 or 2x6 Wood Framing.
- Interior Elevations are dimensioned to finish face of gypsum board, typical.
- Coordinate project specific manufacturer's dimensions required for all hardware with size of mechanical closets and mechanical close doors before building enclosure walls and fur downs. Adjust as required. Contractor to verify before purchase of doors that a 6'-0" door will provide adequate vertical access to project specific mechanical unit for servicing.
- Coordinate project specific tub and shower units with framing opening dimensions. Adjust as required.
- Kitchen base cabinets are 24" deep and 34.5" tall (except for type 'A' units where base cabinets to be 32.5" tall). Kitchen wall cabinets are 12" deep and 42" tall. Bath base cabinets are 21" deep and 32.5" tall typical.
- Ventilated wire shelves are typical and noted as either wire shelves or Shelf and Rod wire shelves per Closet Matic®. 1R1S abbreviates one rod/one shelf. 1R2S abbreviates one rod/two shelves. 2R2S abbreviates two rods/two shelves.
- All tub and shower areas shall be enclosed with moisture resistant Georgia-Pacific DensShield® The Backer Board. If these walls are one hour rated then moisture resistant Georgia-Pacific 5/8" DensShield® Fireguard® The Backer Board shall be used.
- All floor finishes to be as noted on plans.
- Typical 1x4 FJI base and door trim throughout unit. Paint-grade FJI at window sill (1x6), window apron (1x2), and bathroom base trim (1x4). Paint-grade shoe mould to match material at hard surfaces. Stain shoe mould at cabinets, run window sill and apron trim continuous in front of double windows, typical.
- All bath and kitchen cabinets color selections to be per owner.
- All bath and kitchen countertop color selections to be per owner.
- All corner kitchen cabinets to be non-usable corner cabinets.
- All cabinets with exposed end to be a finished end panel.
- Brushed nickel exposed plumbing fixtures, door hardware (including hinges) and miscellaneous hardware, typical. Toilet accessories to be brushed nickel, typical.
- All unit ceilings to have approved (by owner) smooth painted finish.
- All interior unit walls to be approved (by owner) smooth painted finish surface gypsum board with painted base trim caulked along all joints unless otherwise noted.
- Each unit to be provided with one class ABC 5 pound portable fire extinguisher, in kitchen.
- No medicine cabinets.
- Entry Doors shown are to be held 6" off hinges side of wall, interior doors are held 6" off hinge side of wall, door centered, unless otherwise noted.
- Contractor to verify microwave height (offset) specifications, and install microwave to maintain recommended clearance above cooktop. Adjust cabinet as required.
- Contractor and Cabinet Sub-Contractor to coordinate final cabinet layouts with owner approved appliance selections.
- Where Removable Base Cabinets are required per plan, finishing to be provided on these cabinets. In addition, all unit lines to extend 6" under outside face of cabinet in all directions except under dishwasher, refrigerator and stove/range.
- All Group R-2 interior finishes to meet/exceed a minimum R-2. All Group R-2 exterior finishes to meet/exceed a Class B fire rating.
- All wall and floor/ceiling assemblies of unit and unit/public area (hallway, stairwell, amenity, etc.) shall achieve a minimum STC/Rc of 50 as required per code.
- All vanity mirrors to be 42" high and run the full width of the vanity.
- Ice maker (IM) to be located under sink, provide 2" clearance under sink, shown in noted wall.
- All window heads and panels to be double hung window.
- All changes in level at door swings and thresholds at doorways intended for user passage shall comply with 2010 ADA, Section 303.
- Provide typical black or matched trim to walls in unit plans per typical details in A0.5 series.
- Shower glass panels to be 1/4" thick tempered glass typical.
- All walls to be finished to a finished end panel.
- Provide 2" Faux Wood Blinds on all windows.

POOLE & POOLE ARCHITECTURE  
3736 Winterfield Road, Suite 102  
Midlothian, Virginia 23113  
Telephone 804.225.0215  
www.ppa.net

Project: 1928.00  
CADD File: MSUN-A4  
Drawn By: PC  
Checked By: GA

Permit Release:  
May 15, 2020  
Construction Release Set:  
May 15, 2020

Revisions  
No. Date Description  
1 03/19/21 Owner Comments

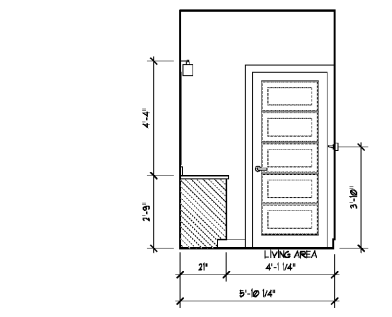
ASI / RFI Revisions  
No. Date Description

# ACCESSIBILITY DIAGRAM NOTES

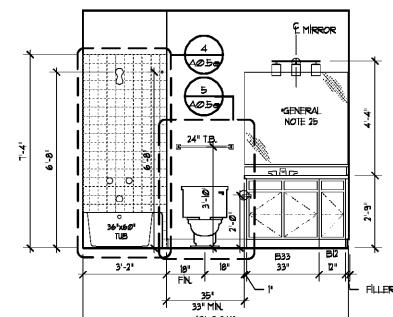
- Indicates removable base cabinet.
- Indicates 30"x48" clear floor space of appliances and fixtures.
- Indicates 30"x48" clear floor space outside of door swing.
- Indicates 30"x60" clear floor space in front of tub with a parallel approach.
- At resident's request, remove laundry room door(s) for additional clearance.

# REFLECTED CEILING PLAN LEGEND

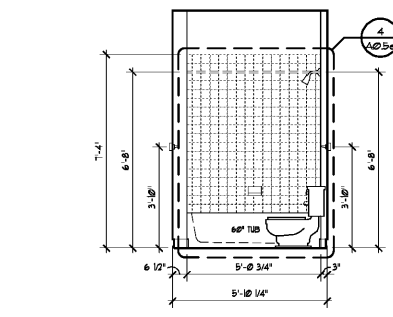

Notes:  
1. Ceiling fans, light, or fixtures to be centered in room, closet, or hallway, unless otherwise noted.  
2. Pendant lighting to be centered on kitchen island wall below. See RCP for spacing.



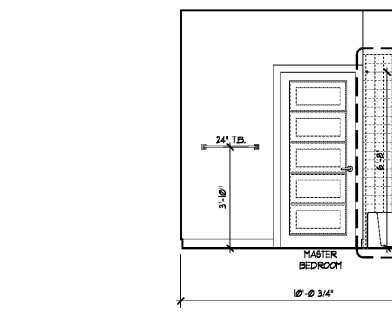
11 Master Bathroom Scale: 3/8" = 1'-0" Elevation



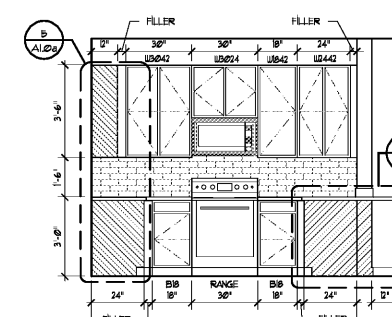
10 Master Bathroom Scale: 3/8" = 1'-0" Elevation



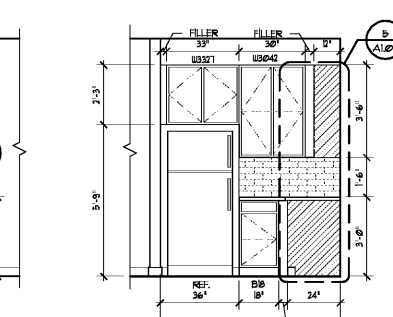
9 Master Bathroom Scale: 3/8" = 1'-0" Elevation



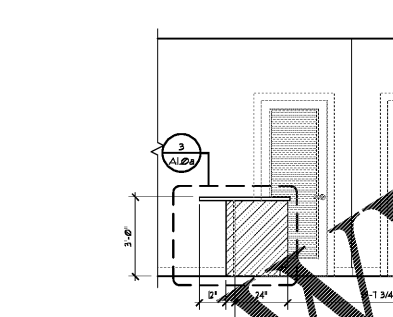
8 Master Bedroom Scale: 3/8" = 1'-0" Elevation



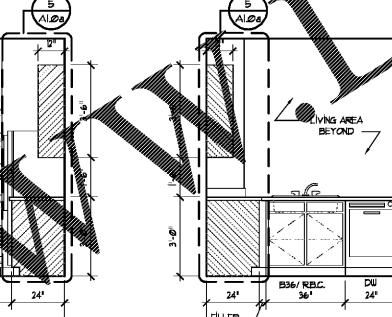
7 Kitchen Scale: 3/8" = 1'-0" Elevation



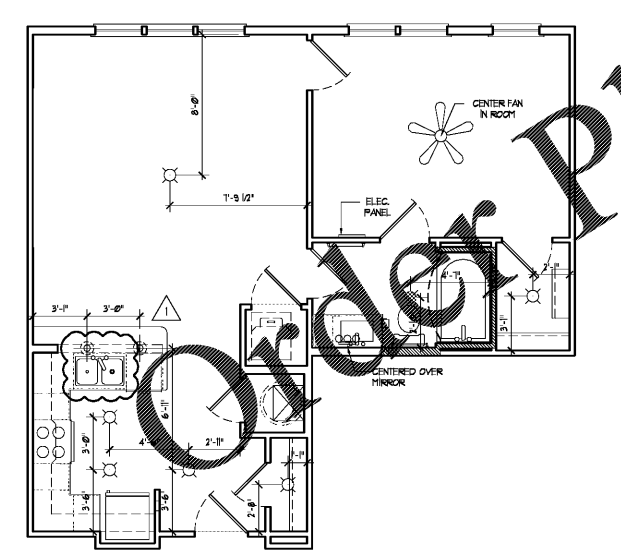
6 Kitchen Scale: 3/8" = 1'-0" Elevation



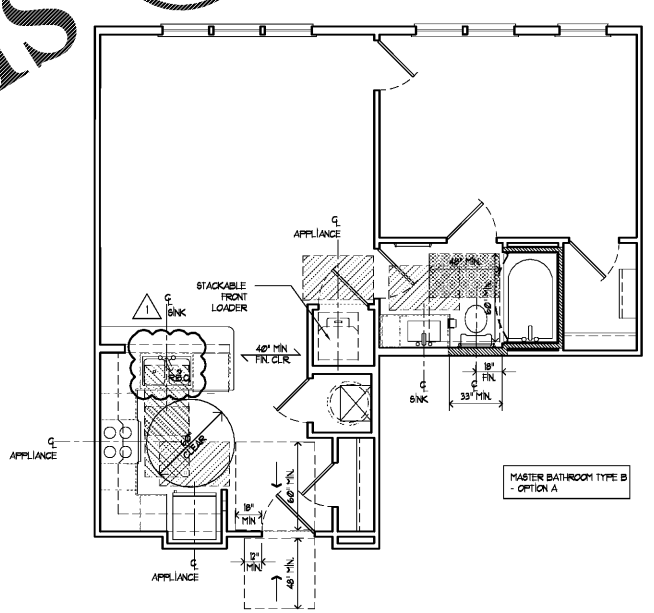
5 Kitchen Scale: 3/8" = 1'-0" Elevation



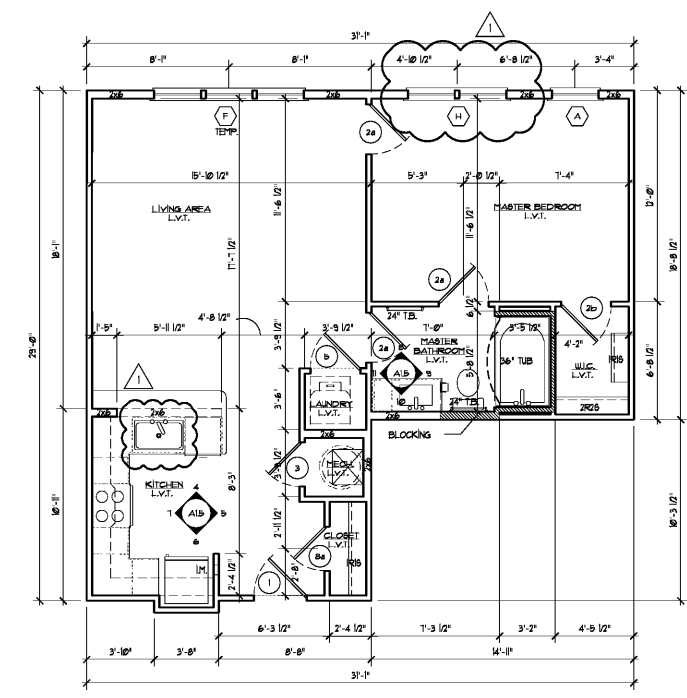
4 Kitchen Scale: 3/8" = 1'-0" Elevation



3 Unit A4 - Reflected Ceiling Plan Scale: 1/4" = 1'-0" Plan



2 Unit A4 - Mobility Feature Diagram Scale: 1/4" = 1'-0" Plan



1 Unit A4 - Standard Unit Scale: 1/4" = 1'-0" Plan

Area Information	
Heated:	750 S.F.
Unheated:	0 S.F.
Total:	750 S.F.

Borough 33  
an Apartment Community by  
33 Broad MF, LLC  
in Chattanooga, Tennessee

Drawing Title:  
UNIT A4  
Floor Plan, Interior Elevations  
& General Notes

# A1.5

ISSUED FOR CONSTRUCTION