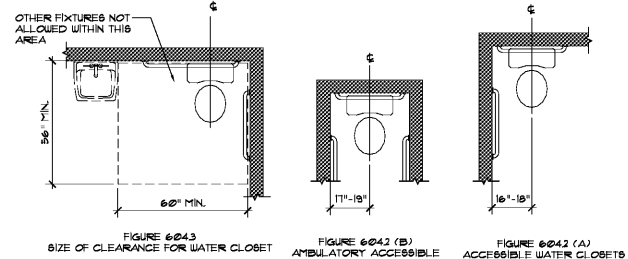
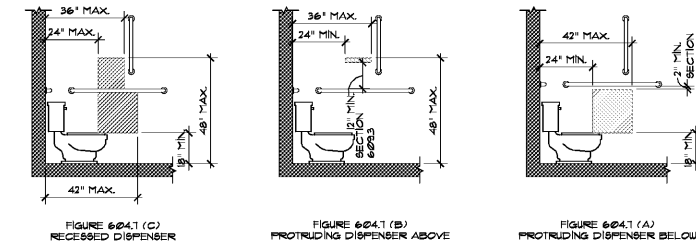


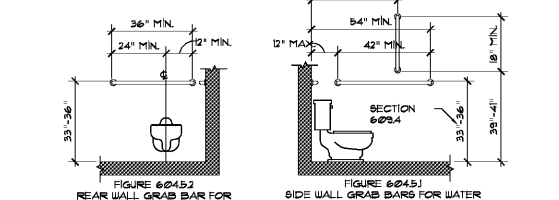
18 Wheelchair Accessible Toilet Compartments
Scale: 3/8" = 1'-0" ANSI Detail



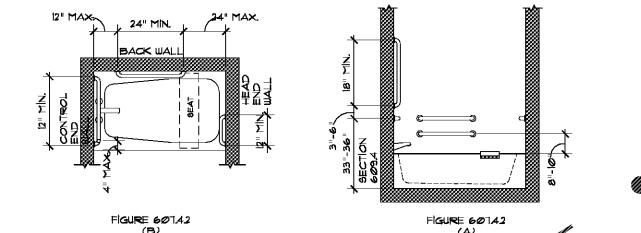
17 Water Closets and Toilet Compartments
Scale: 3/8" = 1'-0" ANSI Detail



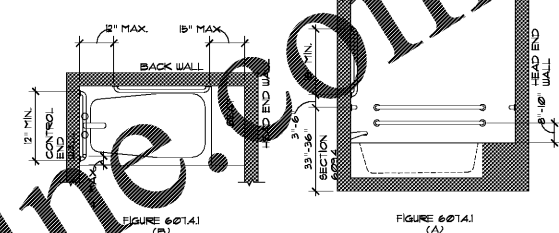
20 Dispenser Outlet Locations
Scale: 3/8" = 1'-0" ANSI Detail



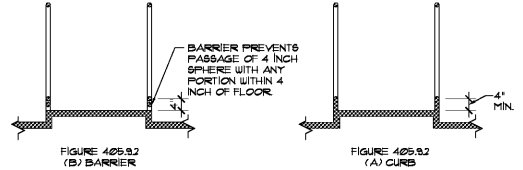
19 Grab Bar Locations
Scale: 3/8" = 1'-0" ANSI Detail



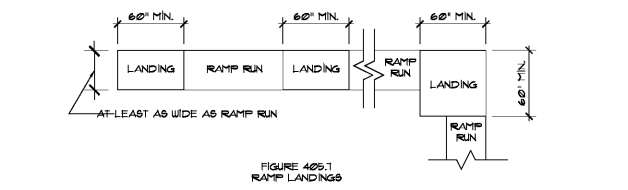
16 Grab Bars for Bathtubs without Permanent Seats
Scale: 3/8" = 1'-0" Detail



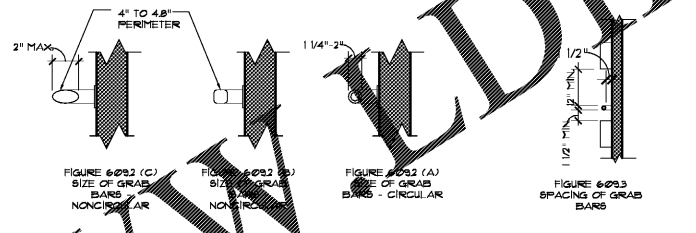
17 Grab Bars for Bathtubs with Permanent Seats
Scale: 3/8" = 1'-0" ANSI Detail



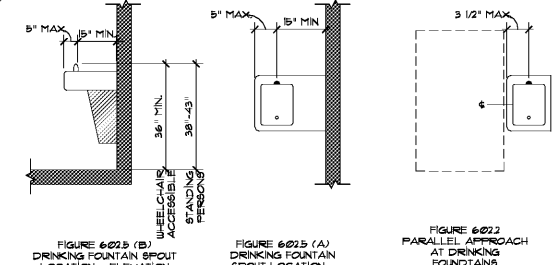
14 Ramp Edge Protection
Scale: 1/2" = 1'-0" ANSI Detail



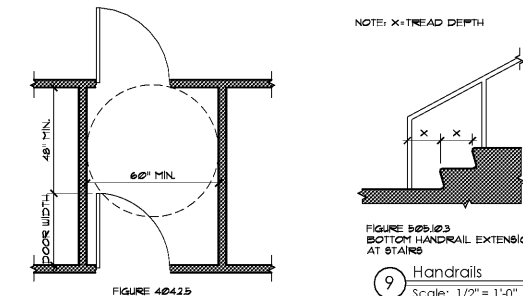
13 Ramp Landings
Scale: 3/16" = 1'-0" ANSI Detail



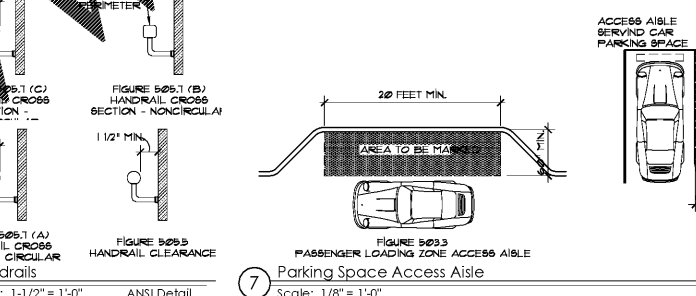
10 Spacing of Grab Bars
Scale: 1/2" = 1'-0" ANSI Detail



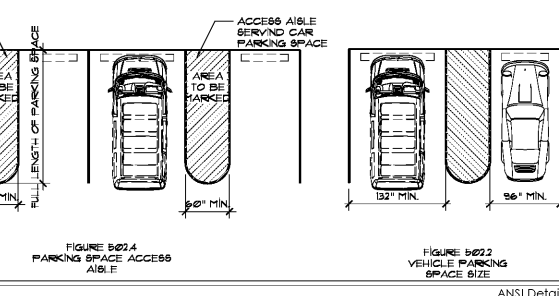
11 Drinking Fountain
Scale: 1/2" = 1'-0" ANSI Detail



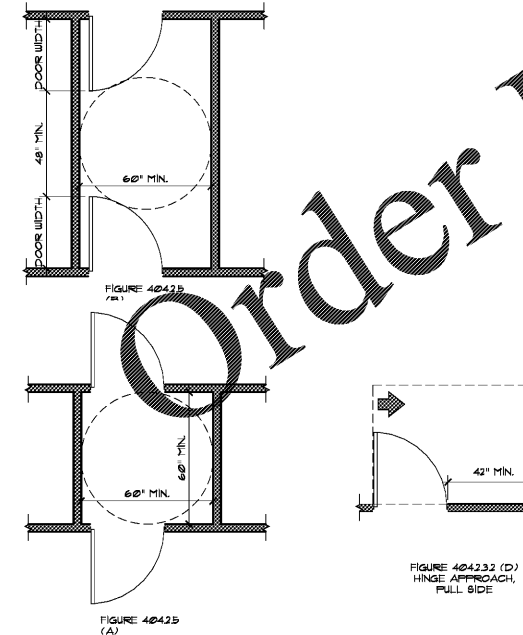
9 Handrails
Scale: 1/2" = 1'-0" ANSI Detail



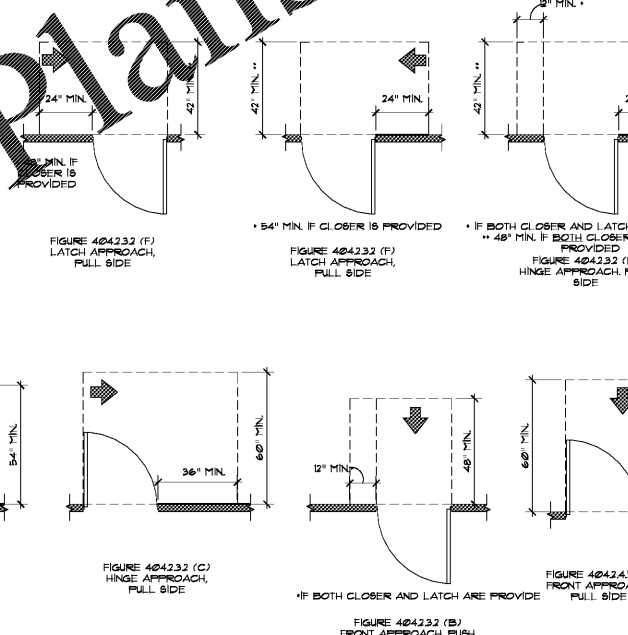
7 Parking Space Access Aisle
Scale: 1/8" = 1'-0" ANSI Detail



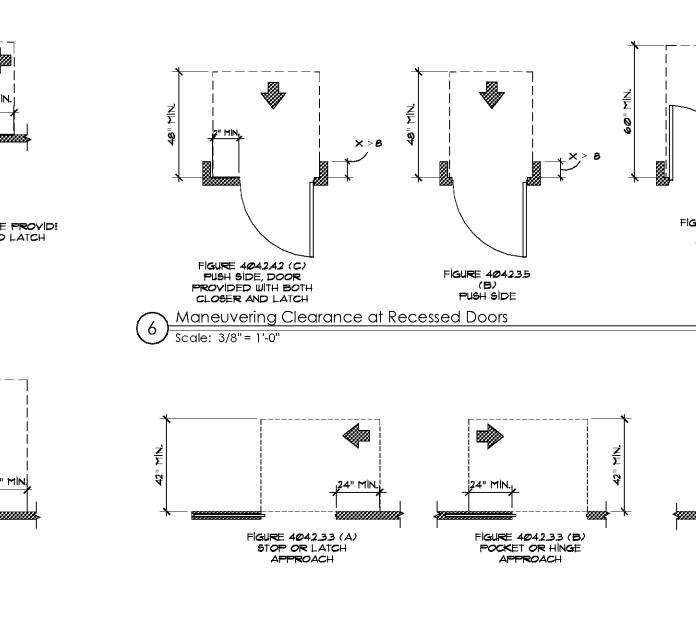
7 Vehicle Parking Space Size
Scale: 1/8" = 1'-0" ANSI Detail



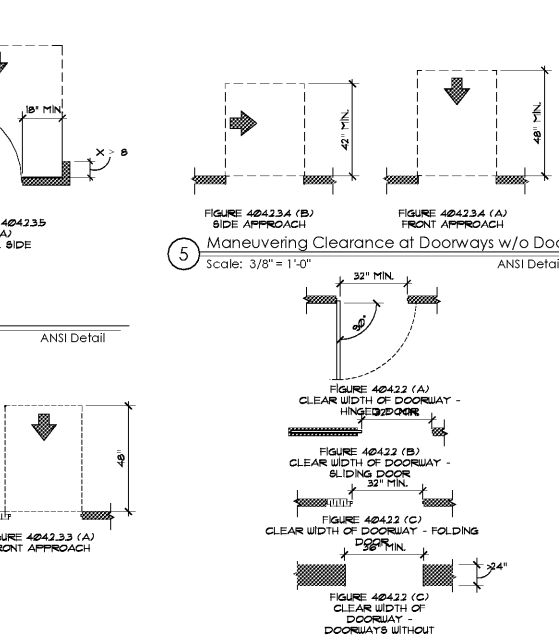
4 Two Doors in a Series
Scale: 3/8" = 1'-0" ANSI Detail



3 Maneuvering Clearance at Manual Swinging Doors
Scale: 3/8" = 1'-0" ANSI Detail



2 Maneuvering Clearance at Sliding and Folding Doors
Scale: 3/8" = 1'-0" ANSI Detail



1 Clear Width at Doorways
Scale: 3/8" = 1'-0" ANSI Detail

Order Plans



May 15, 2020
ZPA

POOLE & POOLE ARCHITECTURE
3736 Winterfield Road, Suite 102
Midlothian, Virginia 23113
Telephone 804.275.0215
www.zpa.net

Project: 1928.00
CADD File: ANSI
Drawn By: SGS
Checked By: DAK
Permit Released: May 15, 2020
Construction Release Set: May 15, 2020
Revisions

No.	Date	Description

ASI / RFI Revisions
No. Date Description

Borough 33
an Apartment Community by
33 Broad MF, LLC
in Chattanooga, Tennessee

Drawing Title:
ADA & ANSI Accessibility
& Details for Dwelling Units/
Public Facilities