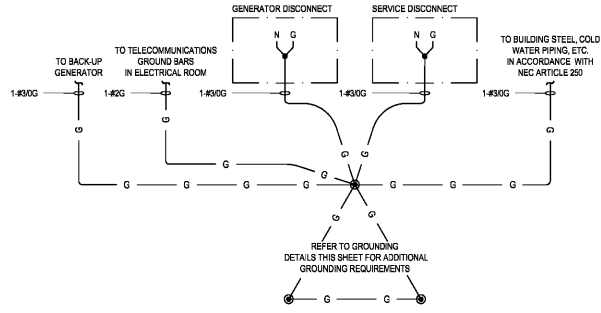
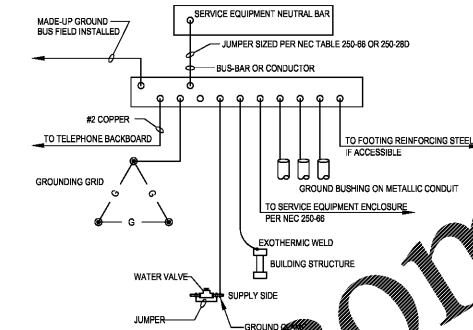


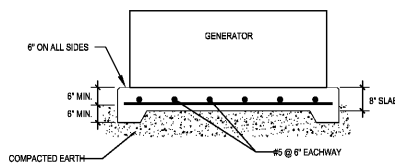
7 CONDUIT TRANSITION DETAIL
E4.1 SCALE: N.T.S.



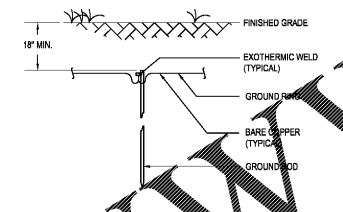
4 GROUNDING RISER DIAGRAM
E4.1 SCALE: N.T.S.
NOTE: ALL GROUND CONDUCTORS ARE COPPER UNLESS SPECIFICALLY NOTED OTHERWISE.



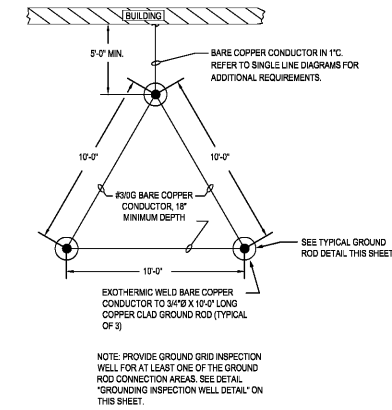
1 SERVICE EQUIPMENT GROUNDING DETAIL
E4.1 SCALE: N.T.S.



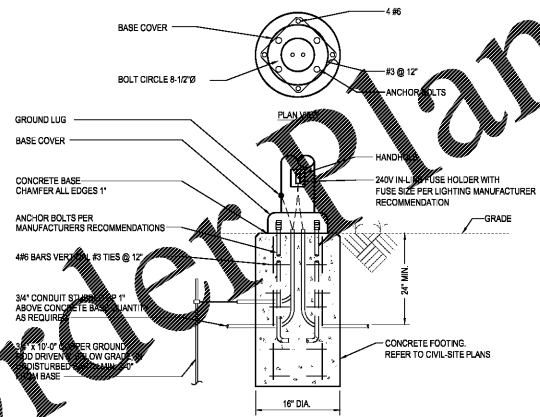
8 GENERATOR PAD DETAIL
E4.1 SCALE: N.T.S.



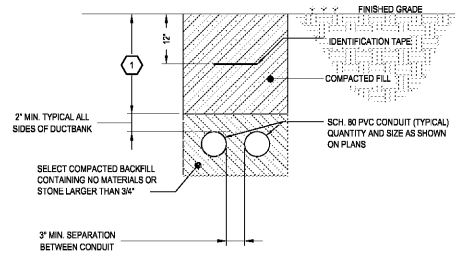
5 GROUND ROD DETAIL
SCALE: N.T.S.



2 GROUNDING GRID DETAIL
E4.1 SCALE: N.T.S.

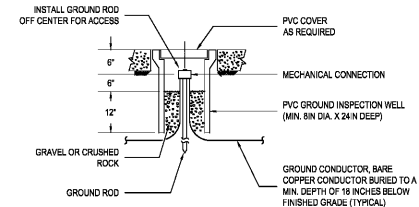


9 SITE LIGHT POLE FOUNDATION DETAIL
E4.1 SCALE: N.T.S.



NOTES KEYED TO DETAIL 5/E4.1

- 1. BELOW GRADE CONDUIT DEPTHS NOTED BELOW ARE A MINIMUM BASED ON NEC TABLE 300.5. ACTUAL DEPTHS WILL VARY BASED ON LOCATION AND COORDINATION WITH UNDERGROUND SITE (BUILDING UTILITIES, HOWEVER, AT NO POINT SHALL THE DEPTH OF THE BELOW GRADE CONDUIT BE SHALLOWER THAN DESCRIBED BELOW:
 - BELOW BUILDING: MINIMUM COVER - 1'
 - IN TRENCH COVERED BY MIN. 2" THICK CONCRETE: MINIMUM COVER - 12"
 - ALL OTHER LOCATIONS: MINIMUM COVER - 18"



3 GROUNDING INSPECTION WELL DETAIL
E4.1 SCALE: N.T.S.

Order Plans @ WWW.LDILine.com



ENGINEERED DESIGNS INC.
North Carolina License #C-1729
1151 SE Cary Parkway, Suite 200 Cary, North Carolina 27518
P 919.851.6481 F 919.851.9703 www.engineereddesigns.com

City of Winston-Salem
FIRE STATION 3
WINSTON-SALEM • NORTH CAROLINA



THESE DRAWINGS ARE INSTRUMENTS OF SERVICE AND SHALL REMAIN THE PROPERTY OF THE ARCHITECT UNLESS THE PROJECT FOR WHICH THEY WERE MADE IS COMPLETED OR NOT, THEY ARE NOT TO BE USED BY THE OWNER OR ANY OTHER PERSON OR CORPORATION OR PROVIDED TO THE PROJECT DESIGN OR CONSTRUCTION TO ANY OTHER APPROPRIATE CORPORATION OR INDIVIDUAL.

© COPYRIGHT 2013 BY ERSOY BRAKE APPELBYRD ARCHITECTS, P.A. ALL RIGHTS RESERVED. EXCEPT AS PERMITTED UNDER THE LIMITED EXPRESS COPYRIGHT ACT OF 1976, NO PART OF THESE DOCUMENTS MAY BE REPRODUCED OR DISTRIBUTED IN ANY FORM OR BY ANY MEANS WITHOUT THE WRITTEN PERMISSION OF ERSOY BRAKE APPELBYRD ARCHITECTS, P.A.

DRAWN: SG
CHECKED: BW
COMM: 1904
DATE: 03-17-21
REVISION: