

EQUIPMENT NOTE TO E.C.

ALL EFFORTS HAVE BEEN MADE TO CORRECTLY IDENTIFY EACH PIECE OF EQUIPMENT / APPLIANCE LOAD IN ORDER TO REFLECT THE CORRECT CONDUIT, WIRE AND CIRCUIT BREAKER SIZE WITH RESPECT TO VOLTAGE DROP AND EQUIPMENT LOAD. THE ELECTRICAL CONTRACTOR SHALL VERIFY ALL EQUIPMENT / APPLIANCE INFORMATION WITH THE ACTUAL EQUIPMENT SUPPLIED INCLUDING WIRE, BREAKER SIZES AND NEMA PLUG CONFIGURATIONS. IF ANY OF THE EQUIPMENT / APPLIANCE INFORMATION SHOWN ON THESE DRAWINGS CONFLICTS WITH THE ACTUAL EQUIPMENT / APPLIANCES SUPPLIED, THE ELECTRICAL CONTRACTOR SHALL ASSUME ALL RESPONSIBILITY FOR PROVIDING ADEQUATE RECEPTACLE, CONDUIT, WIRE, AND BREAKER SIZES FOR THESE PIECES OF EQUIPMENT / APPLIANCES INSTALLED IN ACCORDANCE WITH THE NEC.

ELECTRICAL CONNECTION TO DIESEL FUELING STATION

ALL UNDERGROUND WIRING WITHIN THE AREA SURROUNDING THE FUELING STATION AS DEFINED BY NEC 514.3 SHALL BE INSTALLED PER NEC 514.8 "UNDERGROUND WIRING". PROVIDE ALL REQUIRED CONDUIT SEAL OFFS AS REQUIRED BY NEC 514. COORDINATED EXACT LOCATION OF FUELING STATION WITH ARCHITECTURAL / CIVIL PLANS.

GFCI RECEPTACLE ACCESSIBILITY NOTE

WHERE GFCI RECEPTACLES ARE REQUIRED AND NOT READILY ACCESSIBLE, CONTRACTOR IS TO SUPPLY AND INSTALL AN BLANK FACE / DEAD FRONT GFCI RECEPTACLE IN AN ACCESSIBLE AREA ADJACENT TO THE EQUIPMENT BEING SERVED. COORDINATE EXACT LOCATION WITH OWNER / ARCHITECT PRIOR TO ROUGH-IN.

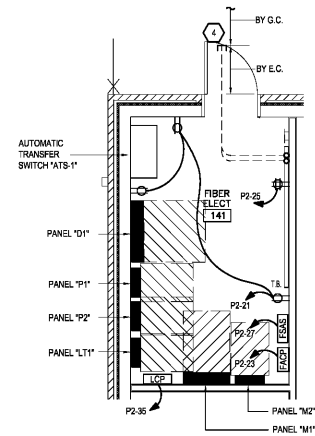
FIRE ALERT SYSTEM ELECTRICAL CONNECTION(S) NOTE

ALL RECEPTACLES / CONNECTIONS PROVIDED TO SUPPORT FIRE ALERT SYSTEM SHALL BE COORDINATED / CONFIRMED WITH FIRE ALERT SYSTEM CONTRACTOR PRIOR TO ROUGH-IN. SEE SHEETS E0.1 AND E-1.3 FOR ADDITIONAL INFORMATION.

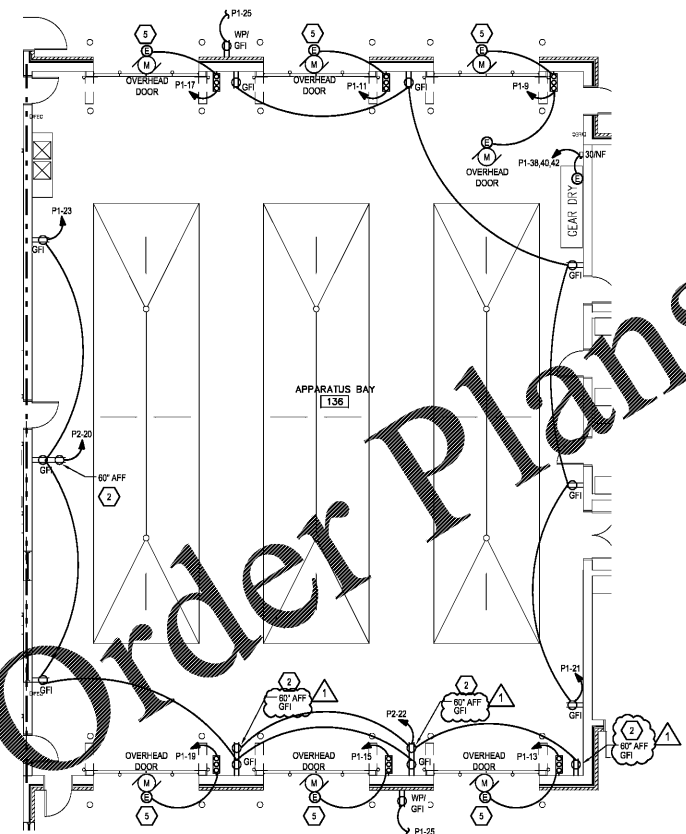
EMERGENCY GAS SHUT-OFF NOTE

ELECTRICAL CONTRACTOR IS TO PROVIDE DISCONNECTING MEANS AND 120V CIRCUIT TO SERVE EMERGENCY GAS SHUT-OFF VALVE PROVIDED BY MECHANICAL CONTRACTOR. E.C. IS ALSO TO PROVIDE AN EMERGENCY SHUT-OFF SWITCH SIMILAR TO AMERICAN GAS SOCIETY MODEL AGSPB9K AS WELL AS A DRY-TYPE RELAY FOR INTEGRATION INTO THE FIRE ALERT SYSTEM. ELECTRICAL CONTRACTOR SHALL CLOSELY COORDINATE LOCATION OF ALL DEVICES AND ELECTRICAL CONNECTION REQUIREMENTS WITH OWNER, MECHANICAL CONTRACTOR AND FIRE ALERT SYSTEM VENDOR PRIOR TO ROUGH-IN.

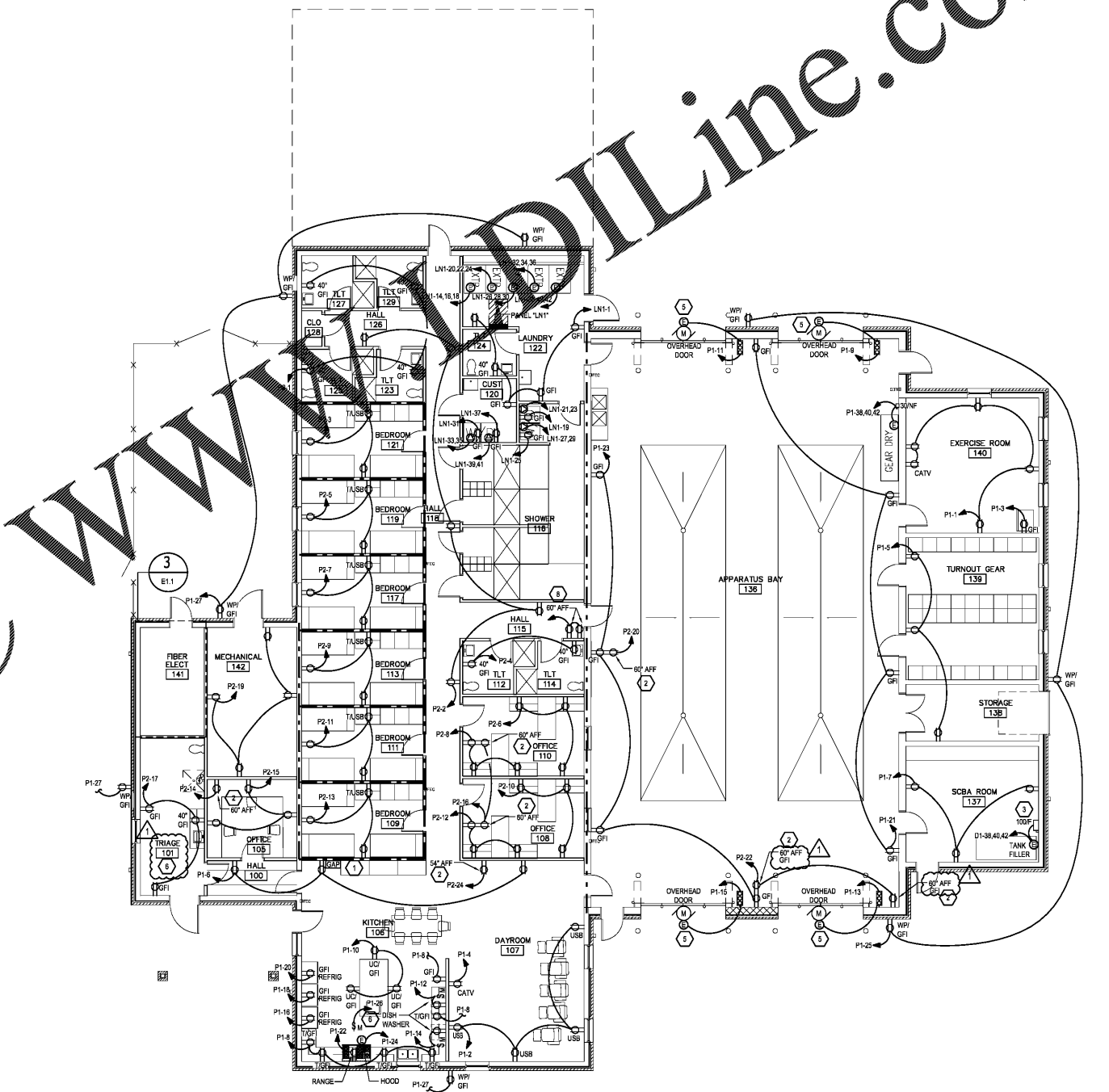
- NOTES KEYED TO SHEET**
- COORDINATE EXACT LOCATION OF GENERATOR ANNUNCIATOR PANEL WITH OWNER / ARCHITECT PRIOR TO ROUGH-IN.
 - PROVIDE 120VAC CIRCUIT TO SERVE FIRE ALERT SYSTEM COMPONENTS. REFER TO SHEETS E0.1 AND E1.3 FOR ADDITIONAL REQUIREMENTS.
 - PROVIDE FUSE AS REQUIRED, SIZED PER EQUIPMENT NAMEPLATE.
 - PROVIDE (2) 4" EMPTY CONDUITS WITH PULLSTRINGS FROM THE NEW FIRE/ELC ROOM TO 8'-0" OUTSIDE OF BUILDING AS SHOWN. PATH INDICATED IS FOR REFERENCE ONLY. CONTRACTOR SHALL COORDINATE THE EXACT REQUIRED PATH OF THESE CONDUITS WITH ALL OTHER TRADES, THE GENERAL CONTRACTOR AND DATA / TELEPHONE SERVICE PROVIDER(S) PRIOR TO ROUGH-IN.
 - COORDINATE ELECTRICAL CONNECTIONS AND ROUGH-IN REQUIREMENTS WITH DOOR INSTALLER PRIOR TO ROUGH-IN.
 - PROVIDE 120VAC CIRCUIT TO SERVE GAS SHUT-OFF VALVE. COORDINATED LOCATION WITH MECHANICAL CONTRACTOR. SEE "EMERGENCY GAS SHUT-OFF" NOTE THIS SHEET FOR ADDITIONAL REQUIREMENTS.
 - INSTALLATION METHODS UTILIZED FOR TRAFFIC 101 SHALL COMPLY WITH APPLICABLE SECTIONS OF NEC ARTICLE 517 AS REQUIRED. REFER TO NEC 517 - HEALTH CARE SPACE NOTE, ON SHEET E0.1 FOR ADDITIONAL REQUIREMENTS.



3 ENLARGED FIBER / ELECT 141
SCALE: 1/8"=1'-0"



3 ALTERNATE FIRST FLOOR - POWER PLAN
SCALE: 1/8"=1'-0"



1 FIRST FLOOR - POWER PLAN
SCALE: 1/8"=1'-0"

RATED WALL LEGEND

---	1/2 HOUR RATED FIRE BARRIER
---	2 HOUR RATED FIRE BARRIER

REFER TO UL PENETRATION DETAILS FOR ADDITIONAL REQUIREMENTS



ENGINEERED DESIGNS INC.
North Carolina License #C-1729
1151 SE Cary Parkway, Suite 200 Cary, North Carolina 27519
P 919.851.6481 F 919.851.9703 www.engineereddesigns.com

City of Winston-Salem
FIRE STATION 3
WINSTON-SALEM • NORTH CAROLINA



THESE DRAWINGS ARE INSTRUMENTS OF SERVICE AND SHALL REMAIN THE PROPERTY OF THE ARCHITECT. IF THE PROJECT FOR WHICH THEY WERE MADE IS ABANDONED OR NOT COMPLETED, THEY ARE NOT TO BE USED FOR ANY OTHER PROJECT WITHOUT THE WRITTEN PERMISSION OF THE ARCHITECT. ANY REPRODUCTION OR DISTRIBUTION OF ANY PART OF THESE DRAWINGS WITHOUT THE WRITTEN PERMISSION OF THE ARCHITECT IS STRICTLY PROHIBITED.

DRAWN: SG
CHECKED: BW
COMM.: 1904
DATE: 03-17-21
REVISION: 1
E1.1 OF 1