

FIXTURE TYPE	DESCRIPTION	MOUNTING	VOLTS	LIGHT SOURCE			MFR.	SERIES NO.	REMARK
				WATTS	MIN. LUMEN OUTPUT	TYPE			
A	2' x 4' SINGLE-BASKET RECESSED TROFFER	LAY-IN	120/96	4000	LED	4000K	COLUMBIA LIGHTING LITHONIA LIGHTING CREE/LIGHTING	LCAT24 SERIES 2VTL4 SERIES CR24 SERIES	
AE	2' x 4' SINGLE-BASKET RECESSED TROFFER	LAY-IN	120/96	4000	LED	4000K	COLUMBIA LIGHTING LITHONIA LIGHTING CREE/LIGHTING	LCAT24 SERIES 2VTL4 SERIES CR24 SERIES	PROVIDE WITH INTEGRAL 90 MINUTE BATTERY PACK
B	2' x 2' SINGLE-BASKET RECESSED TROFFER	LAY-IN	120/36	4000	LED	4000K	COLUMBIA LIGHTING LITHONIA LIGHTING CREE/LIGHTING	LCAT22 SERIES 2VTL2 SERIES CR22 SERIES	
BE	2' x 4' SINGLE-BASKET RECESSED TROFFER	LAY-IN	120/96	4000	LED	4000K	COLUMBIA LIGHTING LITHONIA LIGHTING CREE/LIGHTING	LCAT24 SERIES 2VTL4 SERIES CR24 SERIES	PROVIDE WITH INTEGRAL 90 MINUTE BATTERY PACK
C	6" DOWNLIGHT	RECESSED	120/36	1000	LED	4000K	LITHONIA LIGHTING EATON HALO PRESCOLITE	L0N SERIES P06 SERIES L0SLS SERIES	PROVIDE FIXTURE SUITABLE FOR WET LOCATION.
CE	6" DOWNLIGHT	RECESSED	120/36	1000	LED	4000K	LITHONIA LIGHTING EATON HALO PRESCOLITE	L0N SERIES P06 SERIES L0SLS SERIES	PROVIDE FIXTURE SUITABLE FOR WET LOCATION. PROVIDE WITH INTEGRAL 90 MINUTE BATTERY PACK
D	1' x 4' LED FIXTURE	RECESSED	120/25	2500	LED	4000K	COLUMBIA LIGHTING LITHONIA LIGHTING CREE/LIGHTING	LL14 SERIES 0T1 SERIES OR14 SERIES	
DE	1' x 4' LED FIXTURE	RECESSED	120/25	2500	LED	4000K	COLUMBIA LIGHTING LITHONIA LIGHTING CREE/LIGHTING	LL14 SERIES 0T1 SERIES OR14 SERIES	PROVIDE WITH INTEGRAL 90 MINUTE BATTERY PACK
EX	EXIT SIGN	(SEE REMARKS)	120/5	-	LED	-	LITHONIA LIGHTING LIGHTALANIS HUBBELL COMPAS	EDQR SERIES S1ED SERIES CLS SERIES	PROVIDE EDGE LIT FIXTURE WITH RED LETTERING, FACES / DIRECTIONAL ARROWS AND MOUNTING AS SHOWN ON THE PLANS. COORDINATE LETTER AND HOUSING COLORING WITH ARCHITECT. INTENT IS THAT FIXTURE ORIGIN HOUSING IS RECESSED WITHIN THE CEILING / WALL. PROVIDE TRIM / HOUSING SUCH THAT EDGE LIT EXIT SIGN IS THE ONLY PORTION OF THE EXIT SIGN VISIBLE / EXTENDING BELOW THE SURFACE WHERE THE FIXTURE IS MOUNTED. PROVIDE SURFACE MOUNTED FIXTURE WHERE MOUNTED ON CMU WALLS.
F	HIGH BAY LED	SUSPENDED (14'-0")	120/125	12,000	LED	4000K	LITHONIA LIGHTING COLUMBIA LIGHTING RAB LIGHTING	IBL-W0 SERIES LLH0 SERIES AERODAY SERIES	VERIFY EXACT MOUNTING HEIGHT WITH ARCHITECT PRIOR TO ROUGH-IN.
FE	HIGH BAY LED	SUSPENDED (14'-0")	120/125	12,000	LED	4000K	LITHONIA LIGHTING COLUMBIA LIGHTING RAB LIGHTING	IBL-W0 SERIES LLH0 SERIES AERODAY SERIES	COORDINATE COLOR TEMPERATURE WITH ARCHITECT PRIOR TO ROUGH-IN / PURCHASE. VERIFY EXACT MOUNTING HEIGHT WITH ARCHITECT PRIOR TO ROUGH-IN. PROVIDE WITH INTEGRAL 90 MINUTE BATTERY PACK.
G	4'-0" LED STRIP FIXTURE	CHAIN HUNG	120/25	2500	LED	4000K	EATON-METALLUX LITHONIA LIGHTING COLUMBIA LIGHTING	SMLD SERIES Z1N SERIES MPS SERIES	PROVIDE FIXTURE WITH WIRE GUARD AND 48" SYMMETRIC DIFFUSER. MOUNT APPROXIMATELY 8'-0" AFF.
GE	4'-0" LED STRIP FIXTURE	CHAIN HUNG	120/25	2500	LED	4000K	EATON-METALLUX LITHONIA LIGHTING COLUMBIA LIGHTING	SMLD SERIES Z1N EQUAL MPS SERIES	PROVIDE FIXTURE WITH WIRE GUARD AND 48" SYMMETRIC DIFFUSER. MOUNT APPROXIMATELY 8'-0" AFF. PROVIDE WITH INTEGRAL 90 MINUTE BATTERY PACK.
H	FULL OUT-OF-LED WALL PACK FIXTURE	SURFACE	120/28	400	LED	4000K	HUBBELL LIGHTING NETWORKS HD-CPVANS	GEOPAK SERIES J WKP SERIES HURPC SERIES	FIXTURE SHALL BE SUITABLE FOR WET LOCATIONS.
J	LED POLE MOUNTED LIGHT FIXTURE	POLE MOUNTED ON 3'-0" SQUARE STEEL POLE	120/39	4000	LED	4000K	BEACON LIGHTING LITHONIA LIGHTING COOPER LIGHTING	VIPER S SERIES DSX0 LED SERIES FRV SERIES	PROVIDE HOUSE SIDE SHIELD. VERIFY POLE COLOR / FINISH WITH ARCHITECT. PROVIDE 25 FT TALL, 9" SQUARE, GALVANIZED STEEL POLE WITH ANCHOR BASE AND ALL MOUNTING ACCESSORIES AS REQUIRED. CONFIRM FINISH WITH ARCHITECT PRIOR TO PURCHASE. MOUNT FIXTURE AT 30' AFG. COORDINATE POLE BASE REQUIREMENTS WITH STRUCTURAL.
K	EGRESS LIGHTING FIXTURE	SURFACE	120/15	400	LED	4000K	DUALITE LIGHTING LUMARK	P06 SERIES CUS0 SERIES XT0R SERIES	PROVIDE WITH INTEGRAL 90 MINUTE BATTERY BACK UP SUITABLE FOR 0' OPERATION.

LIGHT FIXTURE SCHEDULE NOTES:

- ALL LIGHTING FIXTURES SHALL BE U.L. LISTED.
- ALL LED FIXTURES SHALL HAVE MINIMUM CRI OF 80 UNLESS SPECIFICALLY NOTED OTHERWISE.
- LUMEN OUTPUT NOTED FOR LED FIXTURES IS THE MINIMUM THAT MUST BE PROVIDED FOR THE FIXTURE SPECIFIED.
- VERIFY ALL MOUNTING HEIGHTS WITH CONTRACTING OFFICER PRIOR TO ROUGH-IN.
- COORDINATE ALL COLOR/FINISH OPTIONS OF LIGHT FIXTURES WITH THE CONTRACTING OFFICER PRIOR TO PURCHASING.
- ALL LIGHTING FIXTURES INDICATED WITHIN THE LIGHTING FIXTURE SCHEDULE SHALL BE PROVIDED WITH ALL REQUIRED MOUNTING HARDWARE, CONNECTIONS AND ANY OTHER NEEDED FIXTURE OPTIONS FOR A COMPLETE AND OPERATIONAL INSTALLATION AS INTENDED ON THE DRAWINGS. CONTRACTOR SHALL BE RESPONSIBLE FOR PROVIDING ALL REQUIRED COMPONENTS AT NO ADDITIONAL COST TO THE CONTRACTING OFFICER.
- COORDINATE ALL COLOR TEMPERATURES WITH ARCHITECT PRIOR TO PURCHASE / ROUGH-IN.

LIGHT FIXTURE SCHEDULE NOTES (CONTINUED):

- ALL EGRESS FIXTURES INDICATED IN THE SCHEDULE CONTAINING BATTERY BACKUP SHALL BE PROVIDED WITH AN UNBATTERYED NOT CONDUCTOR IN ADDITION TO THE SWITCH CONDUCTOR REQUIRED FOR NORMAL OPERATION / CONTROL OF THE FIXTURE AS INDICATED ON THE PLANS.

EQUAL LIGHTING MANUFACTURER NOTE

THE LIGHTING FIXTURES INDICATED WITHIN THIS FIXTURE SCHEDULE ONLY INDICATE THE MINIMAL QUALITY STANDARDS THAT ARE REQUIRED FOR THE FIXTURES THAT ARE TO BE INSTALLED WITHIN THIS FACILITY. SEE SPECIFICATION 265100 FOR ALL ACCEPTABLE MANUFACTURERS.

LIGHTING CONTROL SYSTEM NOTE

THE E.C. SHALL BE RESPONSIBLE FOR ENSURING ALL COMPONENTS LIGHTING FIXTURES, LED DRIVERS, DIMMING CONTROLS AND OCCUPANCY SENSORS ARE FULLY COMPATIBLE PRIOR TO DISORDERING EQUIPMENT. THE E.C. SHALL BARE ALL COSTS AS REQUIRED TO SUPPLY AND INSTALL A 100% COMPLETE LIGHTING SYSTEM AS DEFINED IN THIS SET OF CONSTRUCTION DRAWINGS.

E.C. SHALL FOLLOW ALL MANUFACTURERS RECOMMENDED INSTRUCTIONS FOR INSTALLATION OF LIGHTING CONTROLS IN ADDITION TO THE FOLLOWING ITEMS AT A MINIMUM:

OCCUPANCY SENSORS:

- ALL OCCUPANCY SENSOR LOCATIONS SHOWN ARE APPROXIMATE, REFER TO MANUFACTURERS INSTALLATION INSTRUCTIONS PRIOR TO INSTALLATION.
- ULTRASONIC CEILING MOUNT SENSORS REQUIRE THAT THEY BE LOCATED NO CLOSER THAN 6" TO AIR SUPPLY / RETURN REGISTERS.
- E.C. IS RESPONSIBLE FOR CONFIGURING EACH SENSORS PROPER SENSITIVITY AND TIME DELAY SETTINGS (INITIALLY SET TO MAXIMUM TIME DELAY SETTINGS). VERIFICATION OF MANUFACTURERS RECOMMENDED PLACEMENT, AND FIELD VERIFICATION OF CIRCUITS WITH RESPECT TO ROOM CONTROLLER / POWER-PACK REQUIREMENTS. INITIALLY SET TIME DELAY SETTINGS TO THEIR MAXIMUM SETTING.
- CONTRACTOR SHALL PROVIDE ALL REQUIRED POWER-PACKS FOR CONTROLLING OCCUPANCY SENSORS IN ACCORDANCE WITH THE MANUFACTURERS INSTRUCTIONS.
- ALL LOW-VOLTAGE CONTROL WIRING SHALL BE INSTALLED IN CONDUIT.
- ALL CONTROL DEVICES / POWER-PACKS SHALL BE INSTALLED IN ACCESSIBLE J-BOXES.

OCCUPANCY SENSOR LAYOUT NOTE

OCCUPANCY SENSOR DEVICES INDICATED ON THE PLANS SHOW INTENT FOR LIGHTING CONTROL AND MINIMUM DEVICE REQUIREMENTS. THE CONTRACTOR SHALL BE RESPONSIBLE FOR COORDINATING WITH THE OCCUPANCY SENSOR MANUFACTURER TO DETERMINE PROPER TECHNOLOGY, PLACEMENT, AND POSITION OF THE SENSORS ACCORDING TO BEST PRACTICES OF THE MANUFACTURERS PRODUCT. ADDITIONAL SENSOR DEVICES SHALL BE PROVIDED AS REQUIRED BEYOND THOSE INDICATED ON THE PLANS TO PROVIDE COMPLETE COVERAGE OF THE SPACE TO BE CONTROLLED AND AS REQUIRED TO PROVIDE A COMPLETE FUNCTIONAL AND AUTOMATED LIGHTING CONTROL SYSTEM BASED ON THE OCCUPANCY SENSOR DEVICES SUPPLIED WHERE ADDITIONAL DEVICES ARE REQUIRED AS DESCRIBED ABOVE. THE CONTRACTOR SHALL PROVIDE ALL NECESSARY POWER-PACKS, CONTROL WIRING, ETC. CONTRACTOR SHALL MAINTAIN CONSISTENCY OF DEVICE MOUNTING TYPES (CEILING / WALL) AS INDICATED ON THE PLANS.

ELECTRICAL SYSTEM AND EQUIPMENT

METHOD OF COMPL.	PERFORMANCE
ENERGY CODE: PREScriptive	X PERFORMANCE
ASHRAE 90.1: PREScriptive	X PERFORMANCE

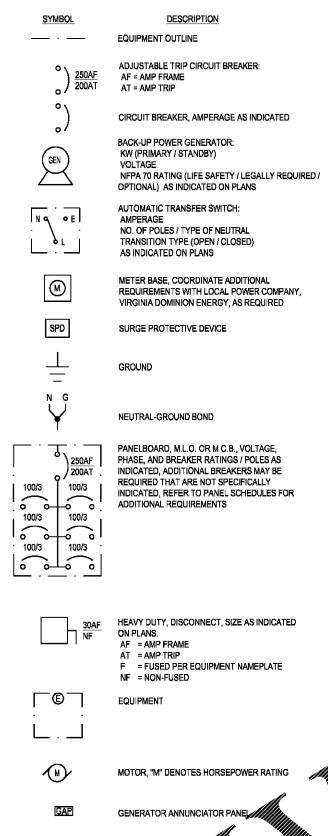
LIGHTING SCHEDULE	PERFORMANCE
TYPE REQUIRED IN FIXTURE	
NUMBER OF LAMPS IN FIXTURE	
BALLAST TYPE USED IN THE FIXTURE	SEE LIGHT FIXTURE SCHEDULE
NUMBER OF BALLASTS IN FIXTURE	
TOTAL WATTAGE PER FIXTURE	
TOTAL INTERIOR WATTAGE SPECIFIED VS. ALLOWED	6,508 W SPECIFIED VS 7,265 W ALLOWED
WHOLE BUILDING METHOD: FIRE STATION	
TOTAL EXTERIOR WATTAGE SPECIFIED VS. ALLOWED	500 W SPECIFIED VS 1,700 W ALLOWED
BUILDING EXTERIOR: ZONE 3	

- ADDITIONAL PRESCRIPTIVE COMPLIANCE:**
- 508.2.1 MORE EFFICIENT MECHANICAL EQUIPMENT
 - X 508.2.2 REDUCED LIGHTING POWER DENSITY
 - 508.2.3 ENERGY RECOVERY VENTILATION SYSTEMS
 - 508.2.4 HIGHER EFFICIENCY SERVICE WATER HEATER
 - 508.2.5 ON-SITE SUPPLY OF RENEWABLE ENERGY
 - 508.2.6 AUTOMATIC DAYLIGHTING CONTROL SYSTEMS

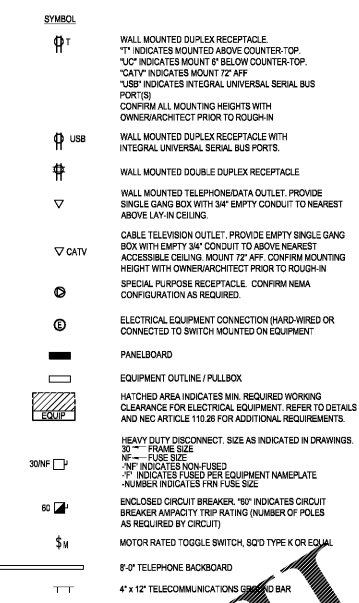
ELECTRICAL DESIGNER STATEMENT:

TO THE BEST OF MY KNOWLEDGE AND BELIEF, THE DESIGN OF THIS PARKING DECK STRUCTURE COMPLIES WITH THE ELECTRICAL SYSTEM AND EQUIPMENT REQUIREMENTS OF THE NORTH CAROLINA ENERGY CODE 2016 EDITION.

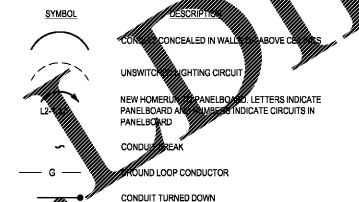
SINGLE-LINE SYMBOLS



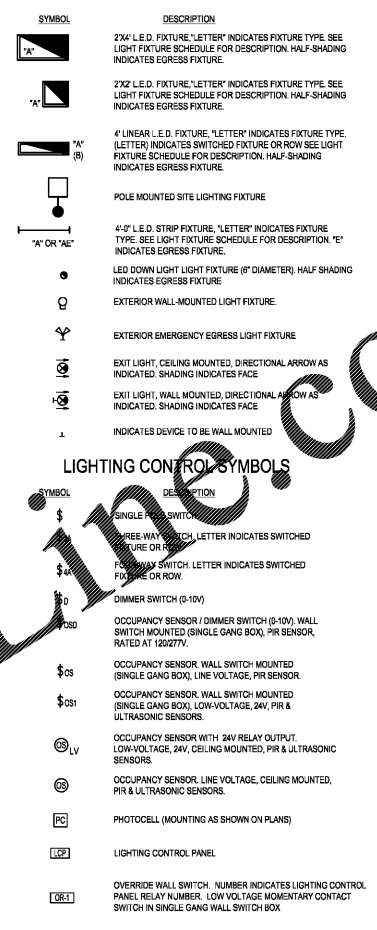
POWER/DATA SYMBOLS



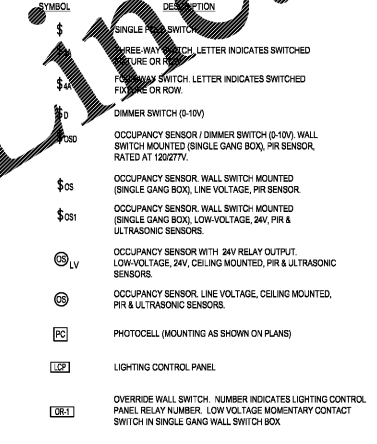
RACEWAY SYMBOLS



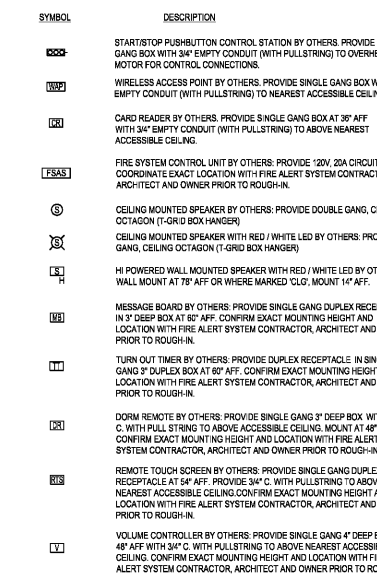
LIGHT FIXTURE SYMBOLS



LIGHTING CONTROL SYMBOLS



SPECIALTY SYMBOLS



ABBREVIATIONS

SYMBOL	DESCRIPTION
AFF	ABOVE FINISHED FLOOR
C	CONDUIT
CC	CEILING
ECC	EQUIPMENT GROUND CONDUCTOR
EM	EMERGENCY
EW	ELECTRIC WATER COOLER
EWV	ELECTRIC WATER HEATER
G, GND	GROUND
SEC	GROUNDING ELECTRODE CONDUCTOR
GRF	GAS WATER HEATER
IG	ISOLATED GROUND
IWH	INSTANTANEOUS WATER HEATER
KCMIL	KILOVAH AMPERES
KVA	KILOVAH AMPERES
KV	KILOVOLT
KWH	KILOWATT HOUR
MCB	MICROCIRCUIT BREAKER
MLO	MAIN LUG ONLY
NELC	NATIONAL ELECTRICAL CODE
NF	NON-FUSED
NLS	NIGHT LIGHT CIRCUIT
NTS	NOT TO SCALE
PH Ø	PHASE
SWBD	SWITCHBOARD
SPD	SURGE PROTECTION DEVICE
UN	UNLESS OTHERWISE NOTED
UPS	UNINTERRUPTIBLE POWER SUPPLY
V	VOLTS
WP	WEATHERPROOF
XFMR	TRANSFORMER

EXISTING BUILDING DEMOLITION NOTE

DEMOLITION OF AN EXISTING STRUCTURE AT THE SITE IS TO TAKE PLACE BEFORE NEW FIRE STATION CONSTRUCTION BEGINS. ELECTRICAL CONTRACTOR SHALL VERIFY THAT THE ELECTRICAL SERVICE HAS BEEN DISCONNECTED TO THE DEMOLISHED STRUCTURE, BEFORE NEW CONSTRUCTION TAKES PLACE.

TYPICAL DEVICE MOUNTING HEIGHT (UNLESS OTHERWISE NOTED)

RECEPTACLES	18" AFF
DATA OUTLET	18" AFF
RECEPTACLES (TV)	60" AFF
DATA OUTLET (TV)	60" AFF
LIGHT SWITCH	48" AFF
EXIT SIGNS	NOTE 3

NOTES:
 1. DIMENSIONS ARE TO DEVICE CENTERLINE UNLESS OTHERWISE NOTED.
 2. REFER TO PLANS 50800 FOR ADDITIONAL DEVICE MOUNTING REQUIREMENTS.
 3. WHERE WALL MOUNTING IS INDICATED, MOUNT 1'-0" ABOVE DOOR OR 7'-6" AFF WHEN NOT SHOWN MOUNTED ABOVE A DOOR, COORDINATE FINAL MOUNTING HEIGHT WITH ARCHITECT PRIOR TO ROUGH-IN.

VOLTAGE DROP WIRING NOTE

THE CONTRACTOR SHALL BE RESPONSIBLE FOR ENSURING VOLTAGE DROP CONDITIONS OF FINAL CONDUIT / CONDUCTOR ROUTINGS DO NOT EXCEED THE FOLLOWING MAXIMUM VALUES AND UPSIZE CONDUCTORS AND CONDUIT AS REQUIRED:

- FEDER CIRCUITS: MAX 2% VOLTAGE DROP (PER ASHRAE 90.1-2007, SECTION 4.1.1)
- BRANCH CIRCUITS: MAX 3% VOLTAGE DROP (PER ASHRAE 90.1-2007, SECTION 4.1.2 AND NEC ARTICLE 210.19(A)(1) INFORMATIONAL NOTE NO. 4)
- COMBINED VOLTAGE DROP ON FEEDER AND BRANCH CIRCUIT TO THE FURTHEST DEVICE OUTLET / UTILIZATION EQUIPMENT SHALL NOT EXCEED 5%.
- EQUIPMENT GROUND CONDUCTORS SHALL BE UPSIZED AS REQUIRED PER NEC ARTICLE 250.122(B).

WHERE THE CONDUCTOR LENGTH FROM THE PANEL TO THE FIRST OUTLET ON A 120 VOLT CIRCUIT EXCEEDS 30 FEET, THE BRANCH CIRCUIT CONDUCTORS FROM THE PANEL TO THE FIRST OUTLET SHALL NOT BE SMALLER THAN #10 AWG.

MECHANICAL / ELECTRICAL CONTROLS WIRING COORDINATION NOTE

THE MECHANICAL AND ELECTRICAL CONTRACTORS SHALL FULLY COORDINATE ALL WORK PRIOR TO ROUGH-IN OF ANY MECHANICAL OR ELECTRICAL EQUIPMENT. REFER TO MECHANICAL SCHEDULES FOR DESIGNATIONS OF ALL EQUIPMENT REQUIRING CONTROL WIRING.

THE MECHANICAL CONTRACTOR SHALL PROVIDE ALL CONTROL WIRING AND HARDWARE RELATED TO CONTROL WORK (I.E. TRANSFORMERS, CONTROL MODULES, CONNECTORS, ETC.). ALL CONTROL WIRING SHALL BE PLENUM RATED AND INSTALLED IN CONDUIT.

THE ELECTRICAL CONTRACTOR SHALL BE RESPONSIBLE FOR PROVIDING ALL MATERIALS AND LABOR TO PROVIDE THE 120V POWER SOURCES REQUIRED TO OPERATE ALL LOW VOLTAGE MECHANICAL EQUIPMENT (I.E. DAMPERS, VAV'S, VV'S, ETC.) AND MAKE FINAL 120 VOLT CONNECTIONS TO CONTROL EQUIPMENT. ELECTRICAL CONTRACTOR SHALL PROVIDE ALL JUNCTION BOXES AND RECEPTACLES, 120 VOLT WIRING AND SHALL INSTALL ALL WIRING IN CONDUIT.

NEC 517 - HEALTH CARE SPACE NOTE

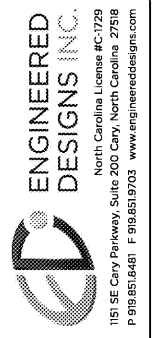
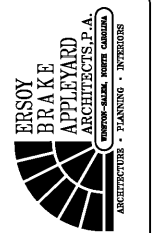
TRAGE 101 IS PROVIDED WITHIN THE FACILITY TO OFFER FIRST AID FOR BUILDING OCCUPANTS AND THE SURROUNDING COMMUNITY AND INCLUDES PATIENT CARE AREAS AS DEFINED BY NEC 517. THEREFORE, ALL ASPECTS OF THE ELECTRICAL INSTALLATION ASSOCIATED WITH TRAGE 101 SHALL MEET THE REQUIREMENTS OF THE APPLICABLE SECTIONS OF NEC 517. THIS INCLUDES BUT IS NOT LIMITED TO SUCH ITEMS AS INSULATED GROUND CONDUCTORS, PANELBOARD BONDING, APPROPRIATE RECEPTACLE TYPES, GROUND FAULT PROTECTION, ETC.

ALL RECEPTACLE, LIGHTING AND EQUIPMENT CIRCUITS IN PATIENT CARE AREAS SHALL BE PROVIDED WITH AN INSULATED GROUND CONDUCTOR PER NEC 517.13.

ALL LOW VOLTAGE WIRING IN PATIENT CARE AREAS SHALL BE INSTALLED PER NEC 517.80.

GENERAL SYMBOLS NOTE

NOT ALL SYMBOLS SHOWN ON THIS SHEET ARE USED ON THE PLANS AND WHEN NOT USED OR INDICATED THEY SHOULD BE ASSUMED NOT TO APPLY TO THIS PROJECT. ADDITIONAL SYMBOLS MAY BE ON THE PLANS THAT ARE NOT SHOWN HERE AND ARE IDENTIFIED ACCORDINGLY ON THE PLANS.



City of Winston-Salem
FIRE STATION 3
 WINSTON-SALEM • NORTH CAROLINA



THESE DRAWINGS ARE INSTRUMENTS OF SERVICE AND SHALL REMAIN THE PROPERTY OF THE ARCHITECT UNLESS THE PROJECT FOR WHICH THEY ARE MADE IS COMPLETED. NO PART OF THESE DRAWINGS OR ANY OTHER PORTION THEREOF SHALL BE REPRODUCED OR TRANSMITTED IN ANY FORM OR BY ANY MEANS, WITHOUT THE WRITTEN PERMISSION OF ERSOY BRAKE APPLIED ARCHITECTS, P.A.

DRAWN	SG
CHECKED	BW
COMM.	1904
DATE	03-17-21
REVISION	

E0.1 OF 1