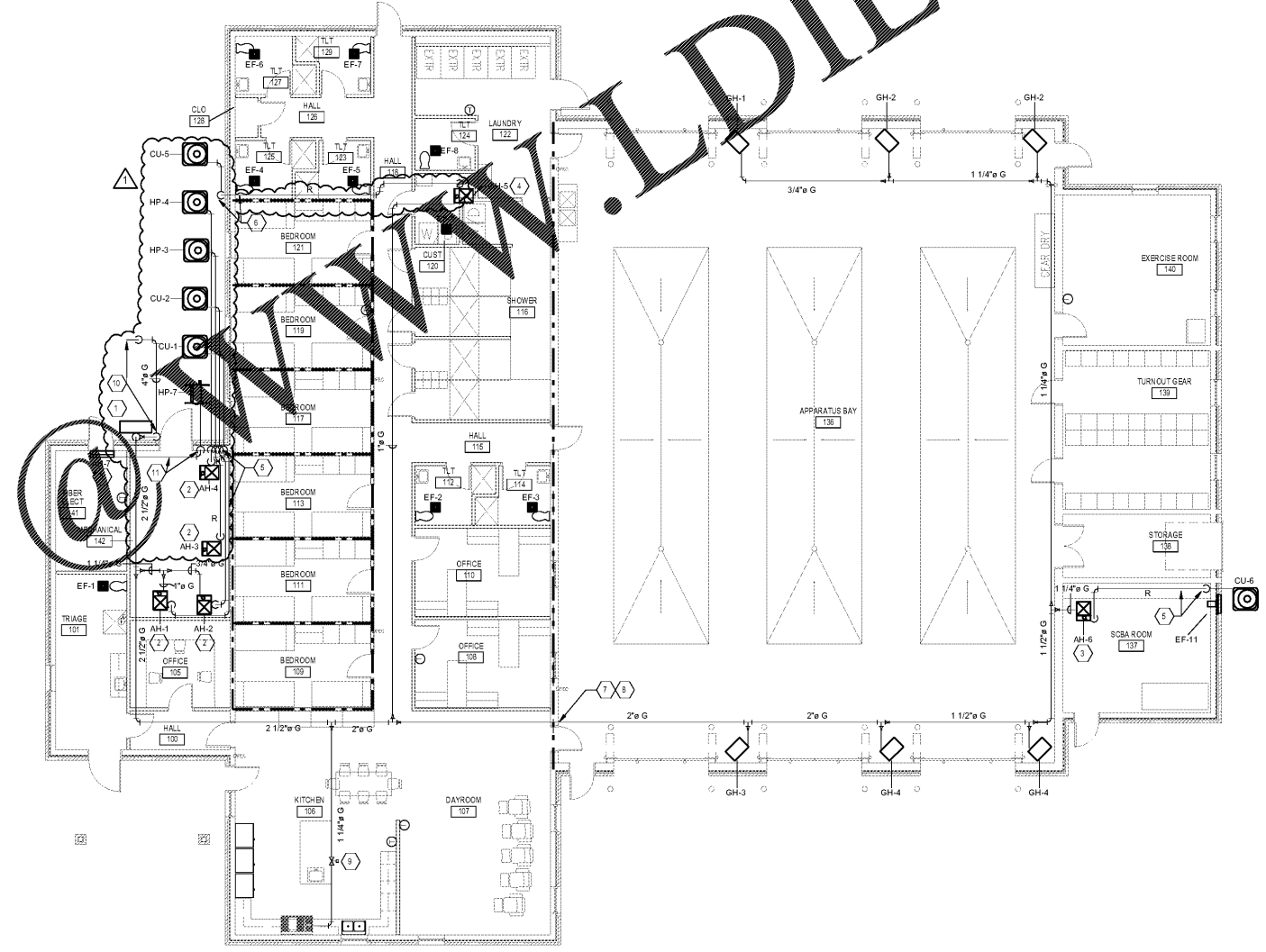


Order Plans



- KEY NOTES**
1. NEW 0.5 PSI GAS METER BY UTILITY COMPANY. (CONNECTED LOAD = 4300 MBH. MAX. EQUAL LENGTH OF PIPE = 270 FEET. GAS MAIN PIPE SIZE = 6". GAS PRESSURE = 0.5 PSI.) (TABLE 402.4.2) (2018 INTERNATIONAL FUEL GAS CODE). PROVIDE A GAS RISER WITH A HOUSE VALVE OF THE SIZE NOTED TIGHT TO THE BUILDING EXTERIOR.
 2. ROUTE 1" INSULATED CONDENSATE DRAIN PIPING TO FLOOR DRAIN.
 3. ROUTE 1" INSULATED CONDENSATE DRAIN PIPING TO EXTERIOR DRAIN PIT.
 4. ROUTE 1" INSULATED CONDENSATE DRAIN PIPING TO JANITOR'S SINK.
 5. ROUTE REFRIGERANT PIPING UP INSIDE OF WALL AND ALONG BACK WALL TO EACH AIR HANDLER.
 6. ROUTE REFRIGERANT LINES UP EXTERIOR OF WALL TO ABOVE CEILING. ROUTE IN REFRIGERANT LINES SET COVER. COORDINATE COLOR OF COVER WITH ARCHITECT.
 7. TURN GAS PIPING UP ONCE IT ENTERS APPARATUS BAY. ROUTE PIPING ABOVE BAY DOORS.
 8. SEAL GAS PIPING PENETRATION TO MAINTAIN FIRE RATING OF WALL.
 9. PROVIDE EMERGENCY GAS SHUT-DOWN SOLENOID VALVE SERVING RANGE. VALVE SIZE TO MATCH GAS LINE SERVING RANGE. SOLENOID VALVE TIED TO SHUT-OFF SWITCH ON WALL. COORDINATE WITH ELECTRICAL CONTRACTOR AND FIRE PROTECTION CONTRACTOR FOR LOCATION AND WIRING REQUIREMENTS.
 10. TIP #9 GAS LINE OFF #9 GAS MAIN AND TURN DOWN. ROUTE UNDERGROUND TO GENERATOR. COORDINATE WHERE GAS PIPING COMES UP WITH GENERATOR PAD.
 11. ROUTE REFRIGERANT LINES ABOVE CEILING. ROUTE REFRIGERANT LINES DOWN INSIDE OF WALL TO FLOOR LEVEL. PENETRATE WALL AT FLOOR LEVEL AND ROUTE TO EXTERIOR HEAT PUMP.

- GENERAL NOTES**
1. PROVIDE ISOLATION VALVE FOR EQUIPMENT CONNECTION (TYPICAL).
 2. GAS RISER SHALL BE SET TO MAINTAIN THE CORRECT GAS PRESSURE.
 3. INSTALL EXTERIOR REFRIGERANT LINES ON ANGLED SUPPORTS. REFRIGERANT LINES SHALL NOT BE INSTALLED ON THE GROUND.

1 ALTERNATE FIRST FLOOR - MECHANICAL PIPING PLAN
M2.2 SCALE: 1/8"=1'-0"

RATED WALL LEGEND

	1/2 HOUR RATED FIRE BARRIER
	2 HOUR RATED FIRE BARRIER

REFER TO UL PENETRATION DETAILS FOR ADDITIONAL REQUIREMENTS



ENGINEERED DESIGNS INC.
North Carolina License #C-1729
1151 SE Cary Parkway, Suite 200 Cary, North Carolina 27518
P 919.851.9481 F 919.851.9703 www.engineereddesignsinc.com

City of Winston-Salem
FIRE STATION 3
WINSTON-SALEM • NORTH CAROLINA



THESE DRAWINGS ARE INSTRUMENTS OF SERVICE AND SHALL REMAIN THE PROPERTY OF THE ARCHITECT. NO PART OF THESE DRAWINGS SHALL BE REPRODUCED OR TRANSMITTED IN ANY FORM OR BY ANY MEANS, ELECTRONIC OR MECHANICAL, INCLUDING PHOTOCOPYING, RECORDING, OR BY ANY INFORMATION STORAGE AND RETRIEVAL SYSTEM, WITHOUT THE WRITTEN PERMISSION OF ERSOY BRAKE APPELBYRD ARCHITECTS, P.A.

DRAWN: EG
CHECKED: MS
COMM: 1904
DATE: 03-17-21
REVISION: 1
M2.2 OF 1