



THESE DRAWINGS ARE INSTRUMENTS OF SERVICE AND SHALL REMAIN THE PROPERTY OF THE ARCHITECT UNLESS THE PROJECT FOR WHICH THEY WERE MADE IS COMPLETED. NO PART OF THESE DRAWINGS IS TO BE USED FOR ANY OTHER PROJECT OR FOR ANY OTHER PURPOSE WITHOUT THE WRITTEN PERMISSION OF THE ARCHITECT. ANY REPRODUCTION OR DISTRIBUTION OF THESE DRAWINGS IN ANY FORM OR BY ANY MEANS WITHOUT THE WRITTEN PERMISSION OF ERSOY BRAKE APPLYARD ARCHITECTS, P.A. IS STRICTLY PROHIBITED.

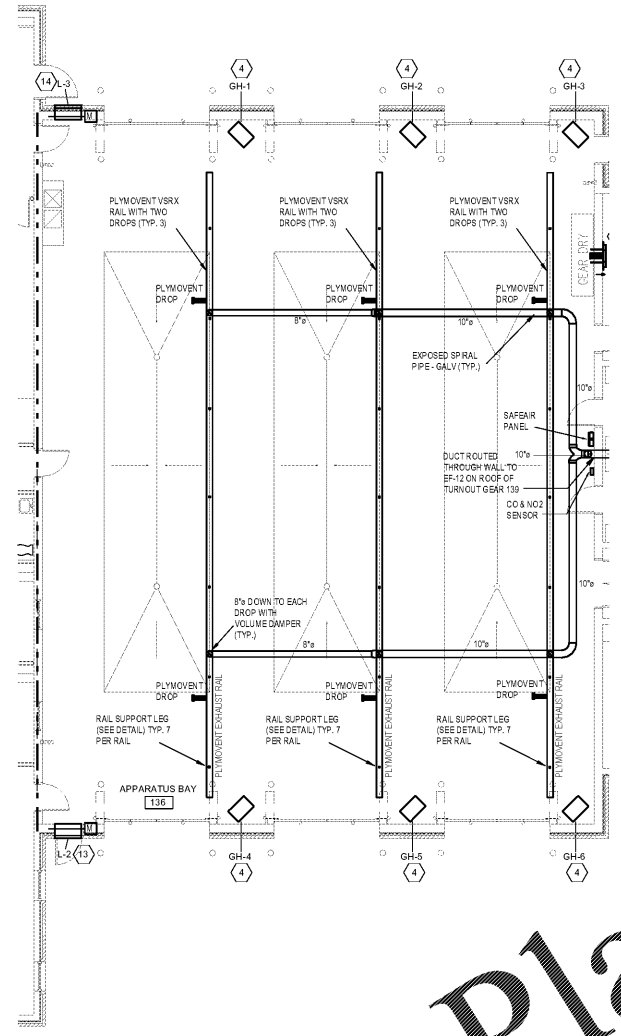
DRAWN: EG
CHECKED: MS
COMM: 1904
DATE: 03-17-21
REVISION: 1
M1.1 OF 1

GENERAL NOTES

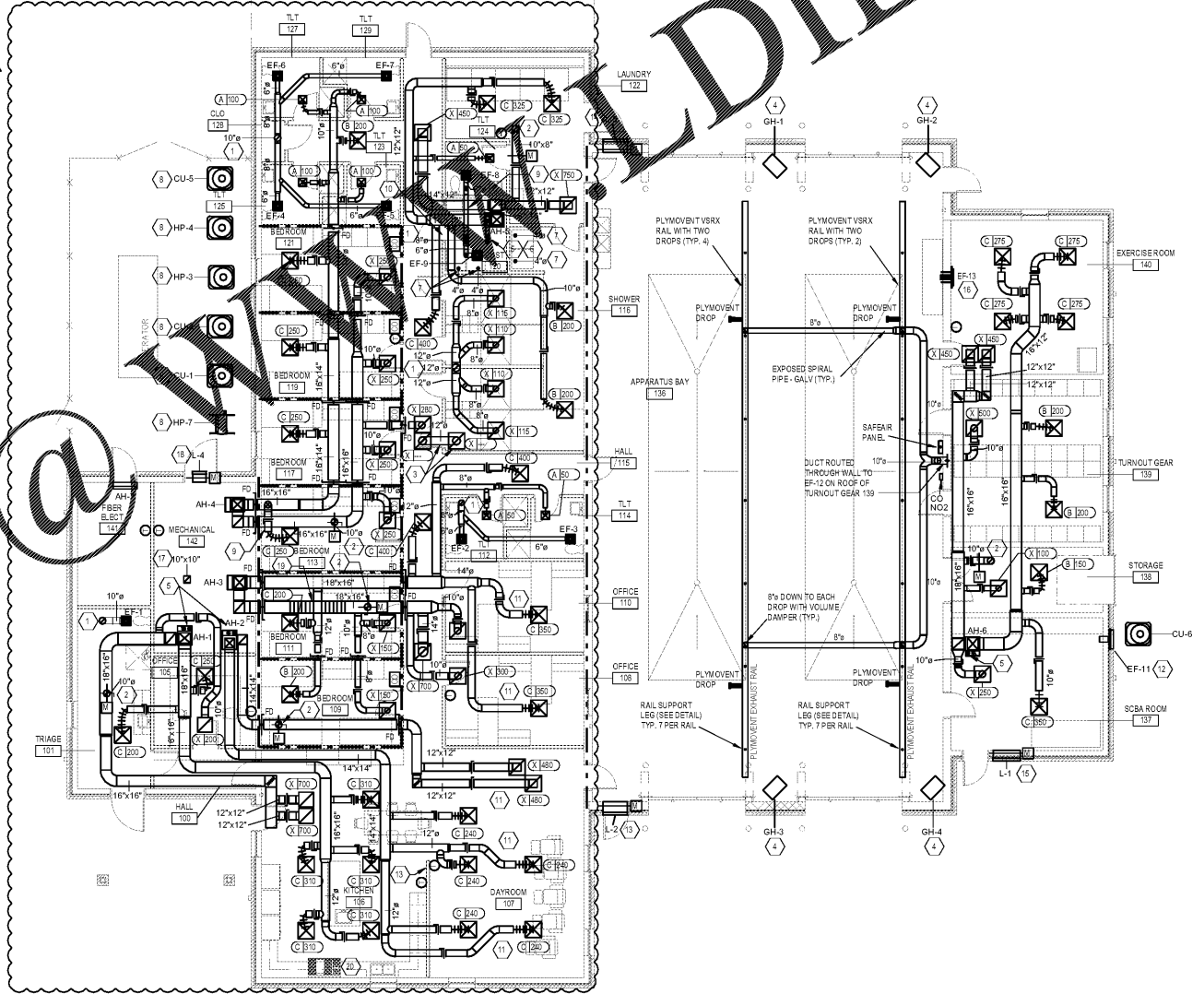
1. ALL GRAVITY INTAKE VENTS TO BE LOCATED AT LEAST 10'-0" FROM EXHAUST OPENINGS.
2. WHERE RETURN DUCTWORK CANNOT ELBOW DOWN AND CONNECT TO RETURN GRILLE, PROVIDE RETURN PLENUM BOX AND TAP RETURN DUCT INTO THE SIDE OF THE PLENUM BOX. SEE DETAIL.

KEY NOTES

1. EXHAUST AIR DUCT UP TO GRAVITY EXHAUST VENT ON ROOF.
2. OUTDOOR AIR DUCTWORK UP TO GRAVITY INTAKE VENT ON ROOF. INSTALL MOTORIZED DAMPER AND MANUAL BALANCING DAMPER IN STRAIGHT RUN OF DUCT.
3. TRANSFER AIR GRILLES AND DUCTWORK.
4. MOUNT GAS HEATERS AT 14'-0" AFF CLEAR OF ALL BAY DOORS AND DOOR HARDWARE. VENT GAS HEATERS THROUGH SIDEWALL CONCENTRIC VENT.
5. FURNACE VENT AND INTAKE DUCTWORK UP TO CONCENTRIC VENT ON ROOF.
6. OFFSET FURNACE VENT AND INTAKE DUCTWORK FROM UNDER SUPPLY AIR DUCTWORK.
7. DRYER EXHAUST VENT UP TO GOOSENECK ON ROOF. SEE DETAIL.
8. INSTALL CONDENSING UNIT ON 6" THICK CONCRETE HOUSEKEEPING PAD. PAD TO BE LARGER THAN CONDENSING UNIT BY 6" ON EACH SIDE. INSTALL CONDENSING UNITS TO MEET MANUFACTURER'S CLEARANCES.
9. ROUTE DUCTWORK THROUGH STRUCTURAL JOISTS TO CROSS OVER DUCTWORK BELOW.
10. TRANSFER AIR LOUVER IN DOOR.
11. ROUTE DUCTWORK TO DIFFUSERS IN BETWEEN STRUCTURAL JOISTS.
12. MOUNT EXHAUST FAN HIGH ON WALL.
13. MOUNT LOUVER ABOVE DOOR. MOTORIZED DAMPER TIED TO EF-13 OPERATION.
14. MATCH LOUVER HEIGHT TO L-2. MOTORIZED DAMPER TIED TO EF-13 OPERATION.
15. MOUNT LOUVER LOW ON WALL WITHIN 3'-0" OF FINISHED FLOOR.
16. MOUNT EXHAUST FAN BELOW ROOF OVERHANG AND ABOVE ROOF OF ADJACENT EXERCISE ROOM.
17. DUCT OPENING UP TO EXHAUST FAN ON ROOF. COVER OPENING WITH WIRE MESH SCREEN.
18. INSTALL LOUVER ABOVE DOOR. MOTORIZED DAMPER TIED TO EF-14 OPERATION.
19. CROSS RETURN DUCT OVER SUPPLY DUCTWORK IN BETWEEN STRUCTURAL JOISTS.
20. SEE ARCHITECTURAL PLANS FOR KITCHEN RANGE HOOD AND EXHAUST FAN INFORMATION.



1 ALTERNATE FIRST FLOOR - MECHANICAL DUCTWORK PLAN
M1.1 SCALE: 1/8"=1'-0"



1 FIRST FLOOR - MECHANICAL DUCTWORK PLAN
M1.1 SCALE: 1/8"=1'-0"

RATED WALL LEGEND	
	12 HOUR RATED FIRE BARRIER
	2 HOUR RATED FIRE BARRIER

REFER TO UL PENETRATION DETAILS FOR ADDITIONAL REQUIREMENTS

Order Plans

www.LDILine.com