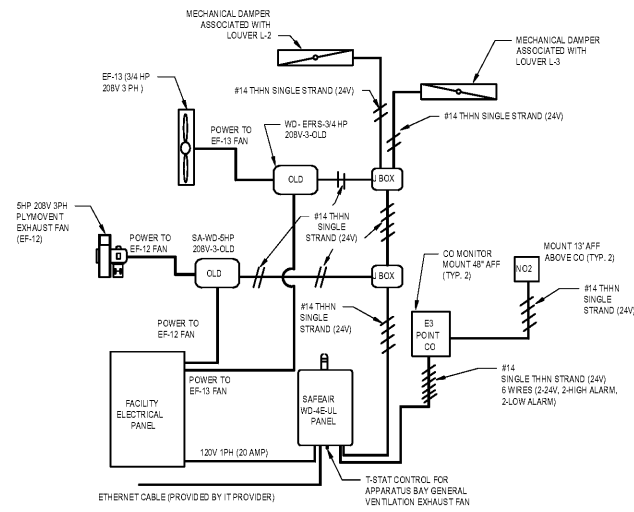


VEHICLE EXHAUST VENTILATION SCHEDULE (BASE BD)						
MARK	TYPE	HP	VOLTAGE	PHASE	AMPERAGE	MODEL NUMBER
WD-4EUL	SAFAIR	N/A	120V	SINGLE	20 FLA	WD-4EUL
EF-12	PLYMOVENT	5	208V	THREE	13.1 FLA	TEV-659

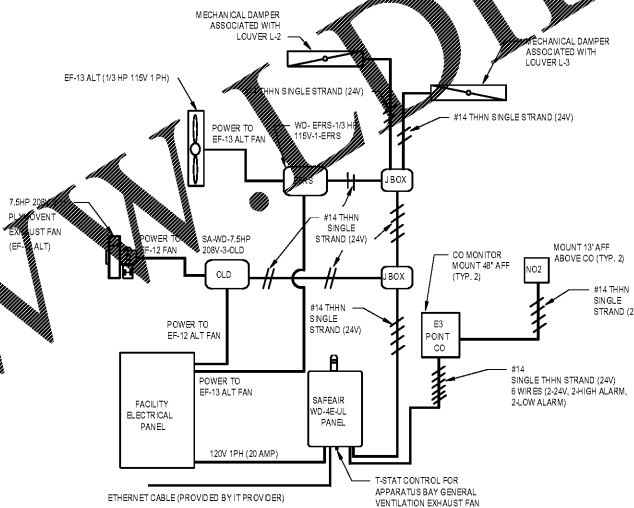
- VEHICLE EXHAUST VENTILATION SYSTEM BASED ON SAFAIR AND PLYMOVENT. CONTACT ACS, INC. 919.255.9344 REFER TO SAFAIR ELECTRICAL FLOW DIAGRAM AND NOTES FOR SYSTEM WIRING.
- THE PURPOSE OF THE CENTRAL VENTILATION CONTROLLER IS TO CONTROL UP TO THREE DIFFERENT SETS OF BLOWERS, GENERAL VENTILATION FANS, AND FILTER ASSEMBLIES FOR THE PURPOSE OF MAINTAINING THE HIGHEST AIR QUALITY IN FIRE STATION FACILITIES, WAREHOUSES, AND GARAGES.
- THE CONTROL UNIT CONSISTS OF A KEY-LOCKABLE NEMA 4X FIBERGLASS CONTROL ENCLOSURE WHICH HOUSES A 24VAC CONTROL TRANSFORMER, MICROPROCESSOR BASED CIRCUIT BOARD, RADIO RECEIVER, A BACKUP BATTERY AND MISCELLANEOUS FUSES, TERMINALS, ETC. LOCATED ON THE OUTSIDE OF THE ENCLOSURE SHALL BE A SELF-ADHESIVE MEMBRANE KEY/INDICATOR OVERLAY WITH ALL INDICATORS AND BUTTONS. A STACK LIGHT/ALARM WITH YELLOW AND RED INDICATORS AND A 540B ALARM HORN. THE CONTROL BOX WILL MAINTAIN UL508A APPROVAL AND SHALL HAVE A UL7E1 SEAL.
- THE VEHICLE EXHAUST VENTILATION SYSTEM IS DESIGNED TO AUTOMATICALLY ENERGIZE EXHAUST FANS AND LOUVERS UPON THE ACTIVATION OF THE TOXIC GAS MONITORS AND SHALL REMAIN ACTIVATED UNTIL THE TOXIC GAS LEVEL FALLS BELOW THE TOXIC GAS PPM PROGRAMMED. THE CO ACTIVATION THRESHOLD SHALL BE PROGRAMMED TO 25 PPM.
- ACS, INC SHALL SUPPLY CO AND NO2 SENSORS PER CONSTRUCTION DOCUMENTS. QUANTITIES ARE LOCATED ON DRAWINGS AND ON SAFAIR FLOW DIAGRAM.
- ACS, INC SHALL SUPPLY PLYMOVENT FAN OLD SWITCH. QUANTITY LOCATED ON SAFAIR FLOW DIAGRAM.
- ACS, INC SHALL SUPPLY EF-13 ALT EFRS SWITCH. QUANTITIES ARE LOCATED ON SAFAIR FLOW DIAGRAM.
- SYSTEM SHALL INCLUDE ALL CONDUIT BOTTLE TESTING AND CALIBRATION.
- THE VEHICLE EXHAUST VENTILATION SYSTEM IS DESIGNED TO AUTOMATICALLY ENERGIZE PLYMOVENT EXHAUST FAN VIA PRESSURE SENSORS.
- THE FIRE DEPARTMENT SHALL BE RESPONSIBLE FOR ALL FIRE APPARATUS TAIL PIPE MODIFICATIONS, IF REQUIRED.

VEHICLE EXHAUST VENTILATION SCHEDULE (ALT)						
MARK	TYPE	HP	VOLTAGE	PHASE	AMPERAGE	MOD. NUMBER
WD-4EUL	SAFAIR	N/A	120V	SINGLE	20 FLA	WD-4EUL
EF-13 ALT	PLYMOVENT	7.5	208V	THREE	19 FLA	TEV-686

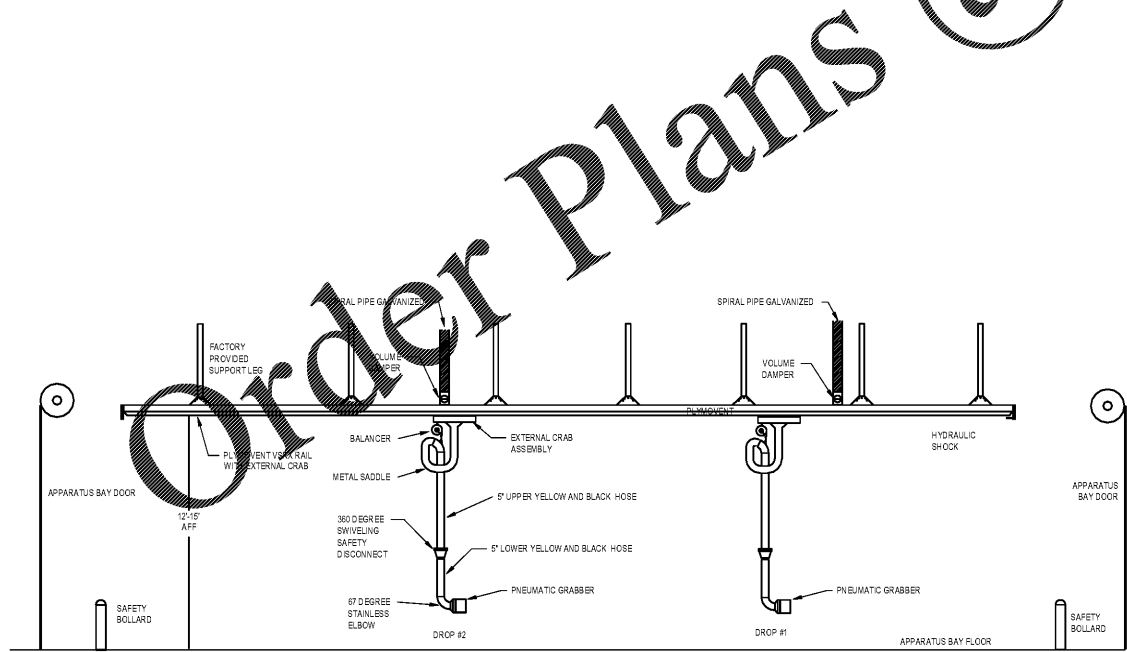
- VEHICLE EXHAUST VENTILATION SYSTEM BASED ON SAFAIR AND PLYMOVENT. CONTACT ACS, INC. 919.255.9344 REFER TO SAFAIR ELECTRICAL FLOW DIAGRAM AND NOTES FOR SYSTEM WIRING.
- THE PURPOSE OF THE CENTRAL VENTILATION CONTROLLER IS TO CONTROL UP TO THREE DIFFERENT SETS OF BLOWERS, GENERAL VENTILATION FANS, AND FILTER ASSEMBLIES FOR THE PURPOSE OF MAINTAINING THE HIGHEST AIR QUALITY IN FIRE STATION FACILITIES, WAREHOUSES, AND GARAGES.
- THE CONTROL UNIT CONSISTS OF A KEY-LOCKABLE NEMA 4X FIBERGLASS CONTROL ENCLOSURE WHICH HOUSES A 24VAC CONTROL TRANSFORMER, MICROPROCESSOR BASED CIRCUIT BOARD, RADIO RECEIVER, A BACKUP BATTERY AND MISCELLANEOUS FUSES, TERMINALS, ETC. LOCATED ON THE OUTSIDE OF THE ENCLOSURE SHALL BE A SELF-ADHESIVE MEMBRANE KEY/INDICATOR OVERLAY WITH ALL INDICATORS AND BUTTONS. A STACK LIGHT/ALARM WITH YELLOW AND RED INDICATORS AND A 540B ALARM HORN. THE CONTROL BOX WILL MAINTAIN UL508A APPROVAL AND SHALL HAVE A UL7E1 SEAL.
- THE VEHICLE EXHAUST VENTILATION SYSTEM IS DESIGNED TO AUTOMATICALLY ENERGIZE EXHAUST FANS AND LOUVERS UPON THE ACTIVATION OF THE TOXIC GAS MONITORS AND SHALL REMAIN ACTIVATED UNTIL THE TOXIC GAS LEVEL FALLS BELOW THE TOXIC GAS PPM PROGRAMMED. THE CO ACTIVATION THRESHOLD SHALL BE PROGRAMMED TO 25 PPM.
- ACS, INC SHALL SUPPLY CO AND NO2 SENSORS PER CONSTRUCTION DOCUMENTS. QUANTITIES ARE LOCATED ON DRAWINGS AND ON SAFAIR FLOW DIAGRAM.
- ACS, INC SHALL SUPPLY PLYMOVENT FAN OLD SWITCH. QUANTITY LOCATED ON SAFAIR FLOW DIAGRAM.
- ACS, INC SHALL SUPPLY EF-13 ALT EFRS SWITCH. QUANTITIES ARE LOCATED ON SAFAIR FLOW DIAGRAM.
- SYSTEM SHALL INCLUDE ALL CONDUIT BOTTLE TESTING AND CALIBRATION.
- THE VEHICLE EXHAUST VENTILATION SYSTEM IS DESIGNED TO AUTOMATICALLY ENERGIZE PLYMOVENT EXHAUST FAN VIA PRESSURE SENSORS.
- THE FIRE DEPARTMENT SHALL BE RESPONSIBLE FOR ALL FIRE APPARATUS TAIL PIPE MODIFICATIONS, IF REQUIRED.



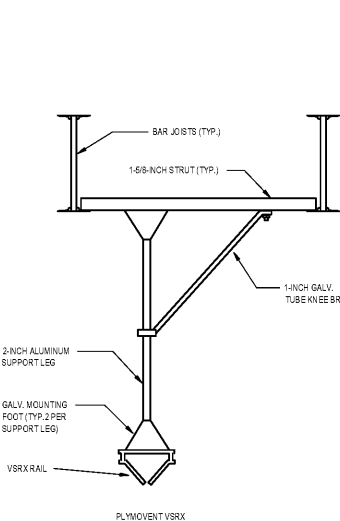
1 SAFAIR CONTROL PANEL ELECTRICAL FLOW DIAGRAM (BASE BD)  
MO.3 SCALE: NTS



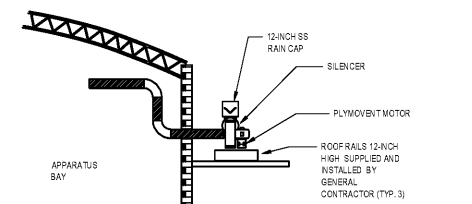
2 SAFAIR CONTROL PANEL ELECTRICAL FLOW DIAGRAM (ALT)  
MO.3 SCALE: NTS



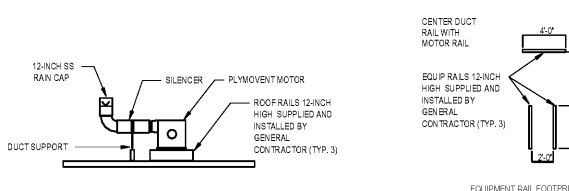
3 TYPICAL PLYMOVENT VRSX DETAIL WITH TWO DROPS  
MO.3 SCALE: NTS



4 PLYMOVENT LEG SUPPORT DETAIL  
MO.3 SCALE: NTS



5 PLYMOVENT MOTOR BLOWER DETAIL A  
MO.3 SCALE: NTS



6 PLYMOVENT MOTOR BLOWER DETAIL B  
MO.3 SCALE: NTS

NOTES:  
EQUIPMENT PROVIDED BY GC:

- WD-4EUL SAFAIR CONTROL PANEL, 120V 1PH (20 AMP)
- SA-WD-5-HP-208-240-3-OLD FOR PLYMOVENT EF-12 FAN
- SA-WD-3/4-HP-208V-3-OLD SWITCH FOR EF-13 FAN
- E3 POINT TOXIC GAS MONITOR UNITS
- CO CARTRIDGE FOR E3 POINT MONITORS
- NO2 REMOTE SENSORS
- PLYMOVENT EF-12 FAN
- CONDUIT SYSTEM CALIBRATION AND SAFAIR COMMISSIONING

EQUIPMENT INSTALLED AND PROVIDED BY ELECTRICAL CONTRACTOR:

- ALL CONDUIT FOR CONTROL WIRE FROM THE SAFAIR PANEL TO THE FOLLOWING: TO SA-WD-OLD(S), EFRS, E3 POINT MONITORS AND TO NO2 SENSORS
- ALL 208V 3PH AND 120V 1PH POWER TO RESPECTIVE SYSTEMS, TO INCLUDE CONDUIT AND WIRE
- ALL CONTROL WIRE FOR SA-WD-OLD(S), EFRS, E3 POINT GAS MONITORS, AND NO2 SENSORS
- MOUNTING OF THE FOLLOWING: SA-WD-OLD(S), EFRS, WD-4EUL PANEL, E3 POINT MONITORS, AND NO2 SENSORS
- PULLING OF CONTROL WIRE FROM THE SAFAIR PANEL TO THE FOLLOWING: TO SA-WD-OLD(S), EFRS, E3 POINT MONITORS, AND TO NO2 SENSORS
- ALL WIRE TERMINATIONS AT RESPECTED PANELS, OLD(S), EFRS, FAN, CO AND NO2 SENSORS
- E.C. RESPONSIBLE FOR PULLING ETHERNET CABLE FROM NON-VOIP ROUTER TO SAFAIR PANEL

NOTES:  
EQUIPMENT PROVIDED BY GC:

- WD-4EUL SAFAIR CONTROL PANEL, 120V 1PH (20 AMP)
- SA-WD-7.5-HP-208-240-3-OLD FOR PLYMOVENT EF-13 ALT FAN
- SA-WD-1 1/2-HP-115V-1-EFRS SWITCH FOR EF-13 ALT FAN
- E3 POINT TOXIC GAS MONITOR UNITS
- CO CARTRIDGE FOR E3 POINT MONITORS
- NO2 REMOTE SENSORS
- PLYMOVENT EF-13 ALT FAN
- CONDUIT SYSTEM CALIBRATION AND SAFAIR COMMISSIONING

EQUIPMENT INSTALLED AND PROVIDED BY ELECTRICAL CONTRACTOR:

- ALL CONDUIT FOR CONTROL WIRE FROM THE SAFAIR PANEL TO THE FOLLOWING: TO SA-WD-OLD(S), EFRS, E3 POINT MONITORS AND TO NO2 SENSORS
- ALL 208V 3PH AND 120V 1PH POWER TO RESPECTIVE SYSTEMS, TO INCLUDE CONDUIT AND WIRE
- ALL CONTROL WIRE FOR SA-WD-OLD(S), EFRS, E3 POINT GAS MONITORS, AND NO2 SENSORS
- MOUNTING OF THE FOLLOWING: SA-WD-OLD(S), EFRS, WD-4EUL PANEL, E3 POINT MONITORS, AND NO2 SENSORS
- PULLING OF CONTROL WIRE FROM THE SAFAIR PANEL TO THE FOLLOWING: TO SA-WD-OLD(S), EFRS, E3 POINT MONITORS, AND TO NO2 SENSORS
- ALL WIRE TERMINATIONS AT RESPECTED PANELS, OLD(S), EFRS, FAN, CO AND NO2 SENSORS
- E.C. RESPONSIBLE FOR PULLING ETHERNET CABLE FROM NON-VOIP ROUTER TO SAFAIR PANEL



City of Winston-Salem  
FIRE STATION 3  
WINSTON-SALEM • NORTH CAROLINA



THESE DRAWINGS ARE INSTRUMENTS OF SERVICE AND SHALL REMAIN THE PROPERTY OF THE ARCHITECT UNLESS THE PROJECT FOR WHICH THEY WERE MADE IS COMPLETED AND THEY ARE NOT TO BE USED FOR ANY OTHER PROJECT OR FOR ANY OTHER PROJECT WITHOUT THE WRITTEN PERMISSION OF THE ARCHITECT. ANY REPRODUCTION OR DISTRIBUTION OF ANY FORM OR BY ANY MEANS WITHOUT THE WRITTEN PERMISSION OF THE ARCHITECT IS PROHIBITED.

DRAWN: EG  
CHECKED: MS  
COMM: 1904  
DATE: 03-17-21  
REVISION: 1

MO.3 OF 1