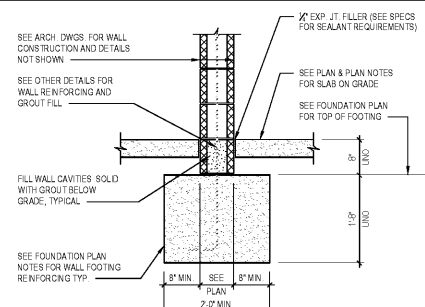
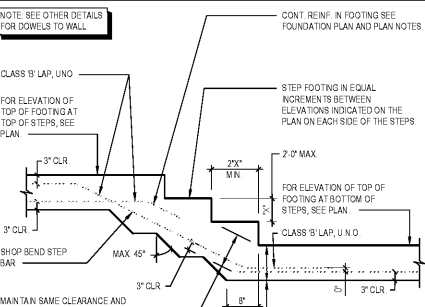


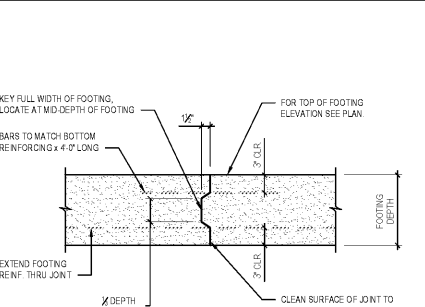
**1**  
TYPICAL DETAIL  
EXTERIOR MASONRY WALL FOOTING  
S7.1  
1/2" = 1'-0"  
Dep. 5/10/2020 DWG



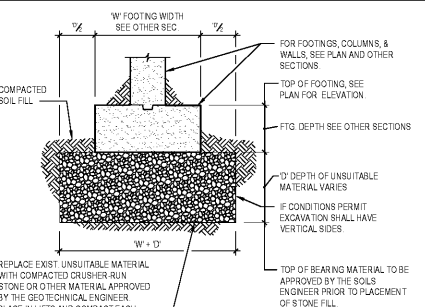
**2**  
TYPICAL DETAIL - INTERIOR  
LOAD BEARING MASONRY WALL FOOTING  
S7.1  
1/2" = 1'-0"  
Dep. 5/10/2020 DWG



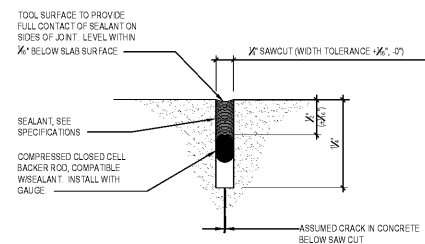
**3**  
TYPICAL DETAIL  
STEPPED WALL FOOTING  
S7.1  
1/2" = 1'-0"  
Dep. 5/10/2020 DWG



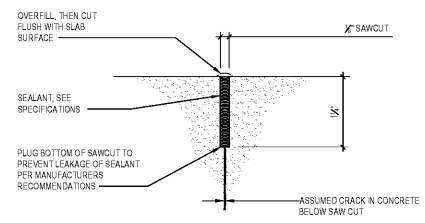
**4**  
TYPICAL DETAIL  
WALL FOOTING CONSTRUCTION JOINT  
S7.1  
1/2" = 1'-0"  
Dep. 5/10/2020 DWG



**5**  
TYPICAL DETAIL - FOOTING AT  
UNSUITABLE BEARING MATERIAL  
S7.1  
1/2" = 1'-0"  
Dep. 5/10/2020 DWG

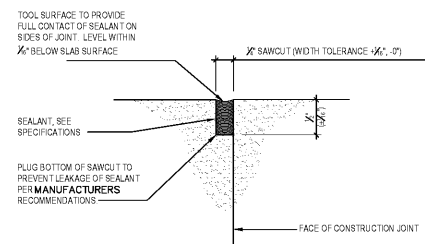


**CONTROL JOINT - FLEXIBLE SEALANT**

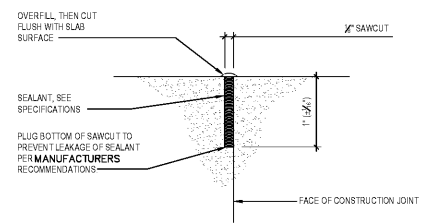


**CONTROL JOINT - SEMI-RIGID SEALANT**

- NOTES:**
- SEE SPECIFICATIONS FOR JOINT SEALANT TYPES, APPLICATION AREAS FOR EACH TYPE OF SEALANT, AND OTHER REQUIREMENTS.
  - DO NOT INSTALL JOINT SEALANT UNTIL A MINIMUM OF 60 DAYS AFTER SAWING THE JOINTS, OR AS LATE AS POSSIBLE PRIOR TO INSTALLING FLOOR FINISHES.
  - WIDEN EXISTING SAWCUT AS REQUIRED TO REMOVE CHIPPED EDGES.
  - DO NOT INSTALL JOINT SEALANT UNTIL SLAB TEMPERATURE HAS STABILIZED AT NORMAL SERVICE LEVEL.
  - IMMEDIATELY BEFORE INSTALLING JOINT SEALANT, CLEAN AND PRIME JOINT SURFACE AS RECOMMENDED BY SEALANT MANUFACTURER.
  - REMOVE ANY EXCESS SEALANT THAT IS ABOVE THE FINISHED FLOOR SURFACE ON EITHER SIDE OF THE JOINT PRIOR TO PLACEMENT OF ANY FLOOR FINISHES.

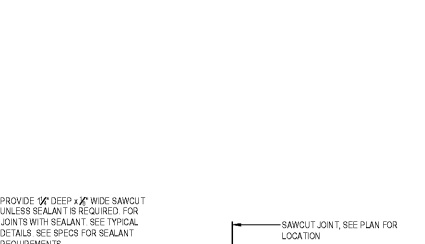


**CONSTRUCTION JOINT - FLEXIBLE SEALANT**

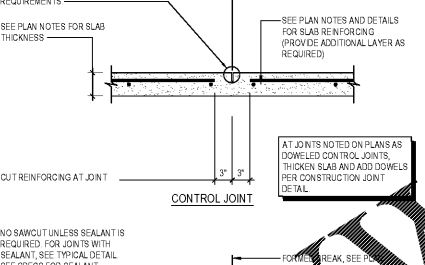


**CONSTRUCTION JOINT - SEMI-RIGID SEALANT**

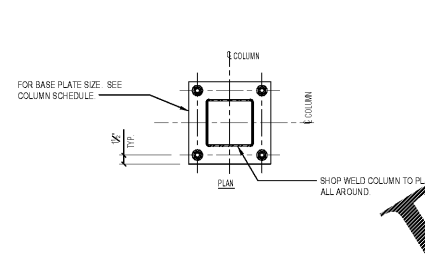
- NOTES:**
- SEE SPECIFICATIONS FOR JOINT SEALANT TYPES, APPLICATION AREAS FOR EACH TYPE OF SEALANT, AND OTHER REQUIREMENTS.
  - DO NOT INSTALL JOINT SEALANT UNTIL A MINIMUM OF 60 DAYS AFTER SAWING THE JOINTS, OR AS LATE AS POSSIBLE PRIOR TO INSTALLING FLOOR FINISHES.
  - WIDEN EXISTING SAWCUT AS REQUIRED TO REMOVE CHIPPED EDGES.
  - DO NOT INSTALL JOINT SEALANT UNTIL SLAB TEMPERATURE HAS STABILIZED AT NORMAL SERVICE LEVEL.
  - IMMEDIATELY BEFORE INSTALLING JOINT SEALANT, CLEAN AND PRIME JOINT SURFACE AS RECOMMENDED BY SEALANT MANUFACTURER.
  - REMOVE ANY EXCESS SEALANT THAT IS ABOVE THE FINISHED FLOOR SURFACE ON EITHER SIDE OF THE JOINT PRIOR TO PLACEMENT OF ANY FLOOR FINISHES.



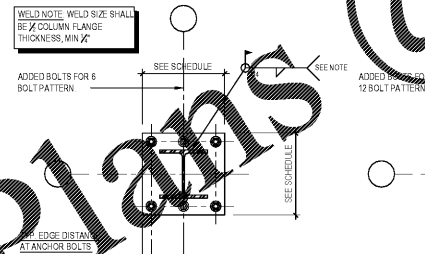
**6**  
TYPICAL DETAIL  
SLAB-ON-GRADE SEALANT JOINTS  
S7.1  
FULL SCALE  
Dep. 5/10/2020 DWG



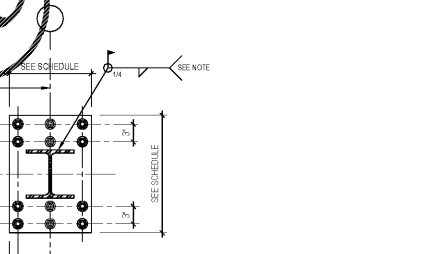
**7**  
TYPICAL DETAIL  
SLAB ON GRADE JOINTS  
S7.1  
1/2" = 1'-0"  
Dep. 5/10/2020 DWG



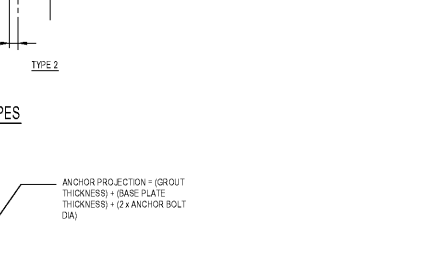
**10**  
TYPICAL DETAIL  
RECTANGLE HSS COLUMN BASE PLATE  
S7.1  
1/2" = 1'-0"  
Dep. 5/10/2020 DWG



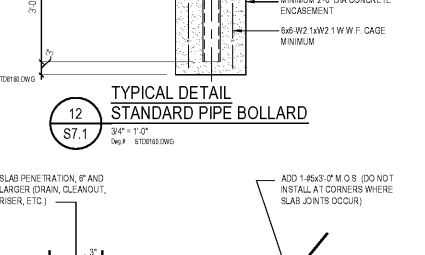
**11**  
TYPICAL DETAIL - COLUMN BASE TYPES  
S7.1  
1/2" = 1'-0"  
Dep. 5/10/2020 DWG



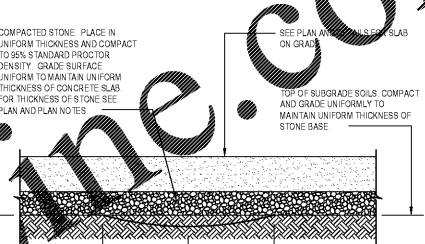
**12**  
TYPICAL DETAIL  
STANDARD PIPE BOLLARD  
S7.1  
1/2" = 1'-0"  
Dep. 5/10/2020 DWG



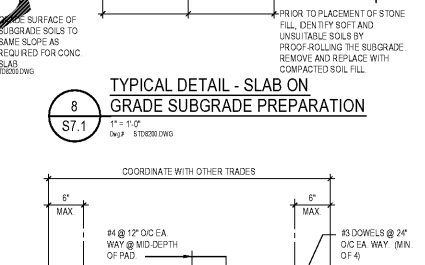
**14**  
TYPICAL DETAIL  
ANCHOR BOLTS  
S7.1  
1/2" = 1'-0"  
Dep. 5/10/2020 DWG



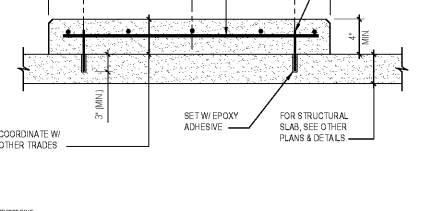
**15**  
TYPICAL DETAIL  
SLAB ON GRADE REINFORCING  
S7.1  
1/2" = 1'-0"  
Dep. 5/10/2020 DWG



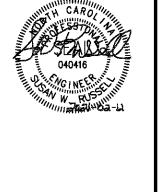
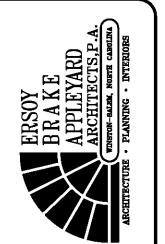
**8**  
TYPICAL DETAIL - SLAB ON  
GRADE SUBGRADE PREPARATION  
S7.1  
1/2" = 1'-0"  
Dep. 5/10/2020 DWG



**9**  
TYPICAL DETAIL - MECHANICAL  
PAD AT SUPPORTED SLAB  
S7.1  
1/2" = 1'-0"  
Dep. 5/10/2020 DWG



**13**  
TYPICAL DETAIL - DEEPEMED SLAB  
UNDER NON-LOAD BEARING WALL  
S7.1  
3/4" = 1'-0"  
Dep. 5/10/2020 DWG



City of Winston-Salem  
FIRE STATION 3  
WINSTON-SALEM • NORTH CAROLINA

FOR CONSTRUCTION

THIS DRAWING IS INSTRUMENTS OF SERVICE AND SHALL REMAIN THE PROPERTY OF THE ARCHITECT UNLESS THE PROJECT FOR WHICH THEY ARE MADE IS COMPLETED OR NOT, THEY ARE NOT TO BE USED BY THE OWNER OR ANY OTHER PERSON OR ORGANIZATION OR FOR ANY OTHER PROJECT OR FOR ANY OTHER PURPOSE WITHOUT THE WRITTEN PERMISSION OF THE ARCHITECT.

DRAWN: JMN  
CHECKED: SWR  
COMM: JMN  
DATE: 02/12/2021

S7.1 OF