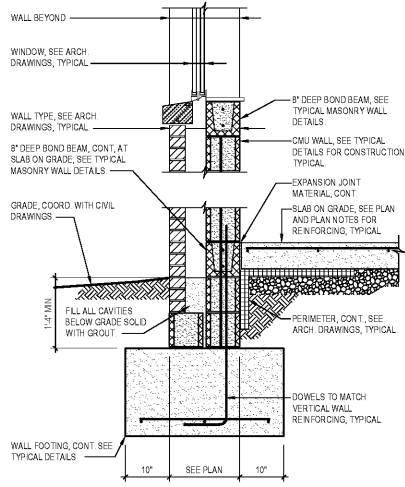
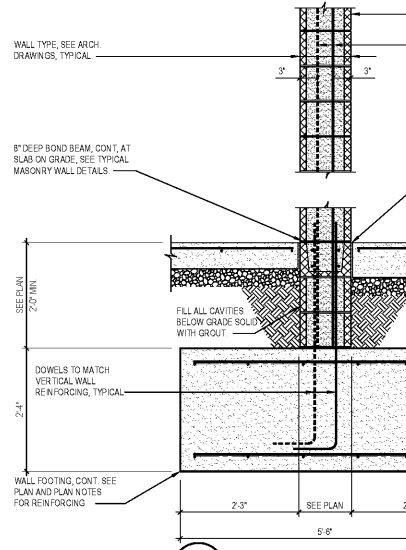


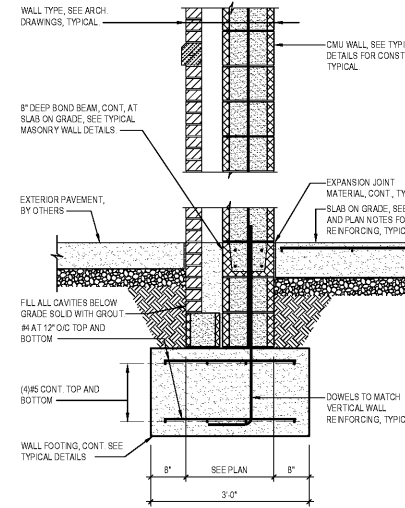
1 SECTION  
S6.1  
3/4" = 1'-0"  
Dwg # 30206-6001-DWG



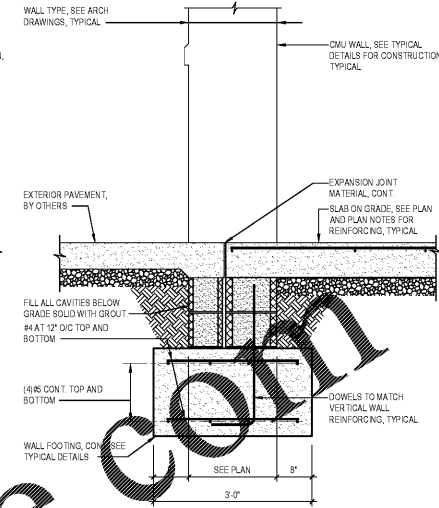
2 SECTION  
S6.1  
3/4" = 1'-0"  
Dwg # 30206-6002-DWG



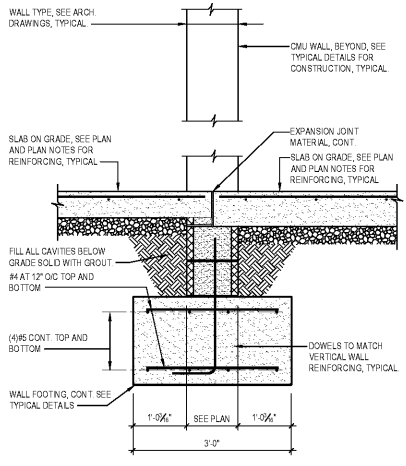
3 SECTION  
S6.1  
3/4" = 1'-0"  
Dwg # 30206-6003-DWG



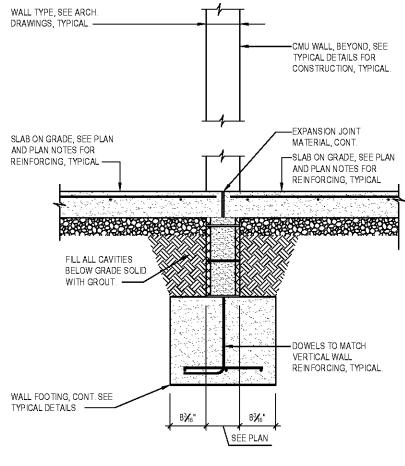
4 SECTION  
S6.1  
3/4" = 1'-0"  
Dwg # 30206-6004-DWG



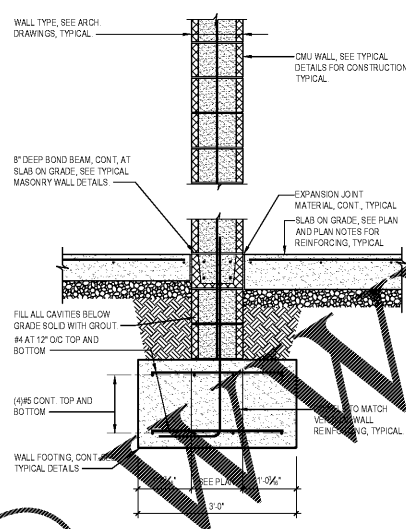
5 SECTION  
S6.1  
3/4" = 1'-0"  
Dwg # 30206-6005-DWG



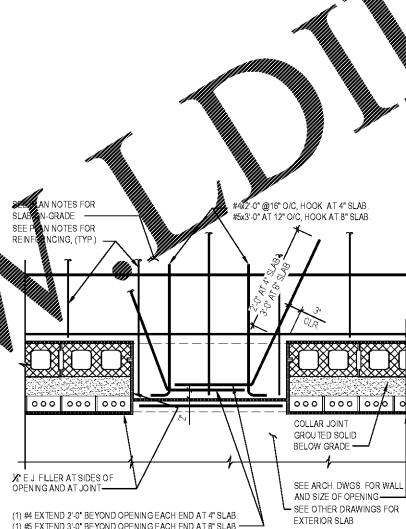
6 SECTION  
S6.1  
3/4" = 1'-0"  
Dwg # 30206-6006-DWG



7 SECTION  
S6.1  
3/4" = 1'-0"  
Dwg # 30206-6007-DWG



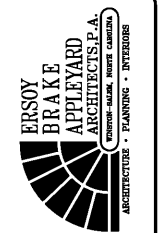
8 SECTION  
S6.1  
3/4" = 1'-0"  
Dwg # 30206-6008-DWG



9 PLAN DETAIL  
S6.1  
3/4" = 1'-0"  
Dwg # 30206-6009-DWG

Order Plans @

WWW.WLDLINE.COM



City of Winston-Salem  
FIRE STATION 3  
WINSTON-SALEM • NORTH CAROLINA

FOR CONSTRUCTION

THESE DRAWINGS ARE INSTRUMENTS OF SERVICE AND SHALL REMAIN THE PROPERTY OF THE ARCHITECT UNLESS THE PROJECT FOR WHICH THEY WERE MADE IS EXHAUSTED OR NOT, THEY ARE NOT TO BE USED BY THE OWNER OR ANY OTHER PERSON OR OTHER PROJECT OR ENTERPRISE TO THE PROJECT EXCEPT BY AGREEMENT IN WRITING AND APPROPRIATE COOPERATION TO THE ARCHITECT.

© COPYRIGHT 2008 BY ENSOY BRAKE APPLARD ARCHITECTS, P.A. ALL RIGHTS RESERVED. DESIGN IS PROVIDED UNDER THE LIMITED LIABILITY AGREEMENT OF 1978 AS PART OF THIS DOCUMENT AND MAY BE REPRODUCED OR DISTRIBUTED IN ANY FORM OR BY ANY MEANS WITHOUT THE WRITTEN PERMISSION OF ENSOY BRAKE APPLARD ARCHITECTS, P.A.

DRAWN: JMN  
CHECKED: SWR  
COMM: JMN  
DATE: 02/12/2021

S6.1 OF