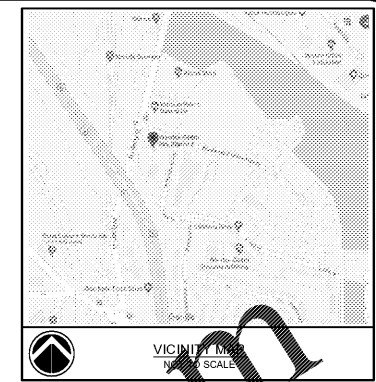


Sanitary Sewer Information

- 1 San. Sewer Manhole
Rim 920.52
Sheet 922.47
C/L Inv. 921.82
- 2 San. Sewer Manhole
Rim 922.28
Sheet 922.38
C/L Inv. 925.82
- 3 San. Sewer Manhole
Rim 923.19
Sheet 927.79
C/L Inv. 927.15
- 4 San. Sewer Manhole
Rim 931.46
Sheet 928.90
C/L Inv. 928.25
- 5 San. Sewer Manhole
Rim 938.09
Sheet 931.59
C/L Inv. 930.89
- 6 San. Sewer Manhole
Rim 941.44
Sheet 935.34
C/L Inv. 934.74
- 7 San. Sewer Manhole
Not Accessible
- 8 San. Sewer Manhole
Rim 946.67
Sheet 940.62
C/L Inv. 940.27

Storm Sewer Information

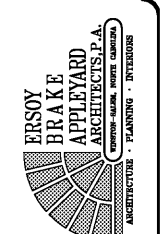
- A Catch Basin
Grate 932.14
Inv. In 927.05 (W)
Inv. In 926.36 (E)
Inv. Out 926.09
- B Catch Basin
Grate 932.98
Not Accessible
Bottom Box 926.95
- C Catch Basin
Grate 940.85
Inv. Out 937.01
- D Grate Inlet
Grate 935.32
Inv. Out 933.74
- E Grate Inlet
Grate 934.27
Inv. In 931.99 (E)
Inv. In 932.03 (S)
Inv. Out 931.95
- F Grate Inlet
Grate 932.26
Inv. In 927.96 (SE)
Inv. In 929.89 (S)
Inv. Out 927.92
- G Catch Basin
Grate 932.19
Inv. In Not Accessible
Inv. Bottom Box 927.29
Inv. Out 927.14
- H Catch Basin
Grate 932.01
Inv. In 926.23
Inv. Out 926.23
- I Grate Inlet
Grate 933.43
Inv. In 931.58 (SE)
Inv. In 931.69 (S) Inv. Out
931.43
- J Grate Inlet
Grate 935.00
Inv. Out 932.44
- K Slab Top
Throat 937.18
Not Accessible
Bottom Box 33.19a
- L Grate Inlet
Grate 940.73
Inv. In 935.19
Inv. Out 935.19
- M Slab Top
Throat 941.10
Inv. In 937.70 (E)
Inv. In 938.12 (S)
Inv. Out 937.47
- N Slab Top
Grate 942.77
Inv. In 938.69
Inv. Out 939.46
- O Catch Basin
Grate 942.90
Inv. In 940.26
Inv. Out 940.19



SITE DATA
 PLAN # 8856-67-0527-00
 PLAN # 8856-67-0643-00
 CITY OF WINSTON-SALEM
 P.O. BOX 2511
 WINSTON-SALEM, NC 27102

ENGINEER
 ALLIED DESIGN, INC.
 4720 KESTER HILL ROAD
 WINSTON-SALEM, NC 27103
 P: 336.765.2277
 F: 336.765.8866
 CONTACT: STEVE CAUSEY, PE
 steve@alldesign.com

SURVEYOR
 M.A. DESIGN GROUP
 120 CLAIR OAKS COURT, SUITE 100
 WINSTON-SALEM, NC 27104
 P: 336.765.1023
 F: 336.765.5022
 CONTACT: RUD BAUGHMAN, PLS
 rud@mla.com



Allied Design, Inc.
 CIVIL ENGINEER/PLANNING/SURVEYING
 4720 KESTER HILL ROAD
 WINSTON-SALEM, NORTH CAROLINA 27103
 Phone: (336) 765-2277
 Fax: (336) 765-8866
 http://www.alldesign.com
 FROM LICENSE C-181

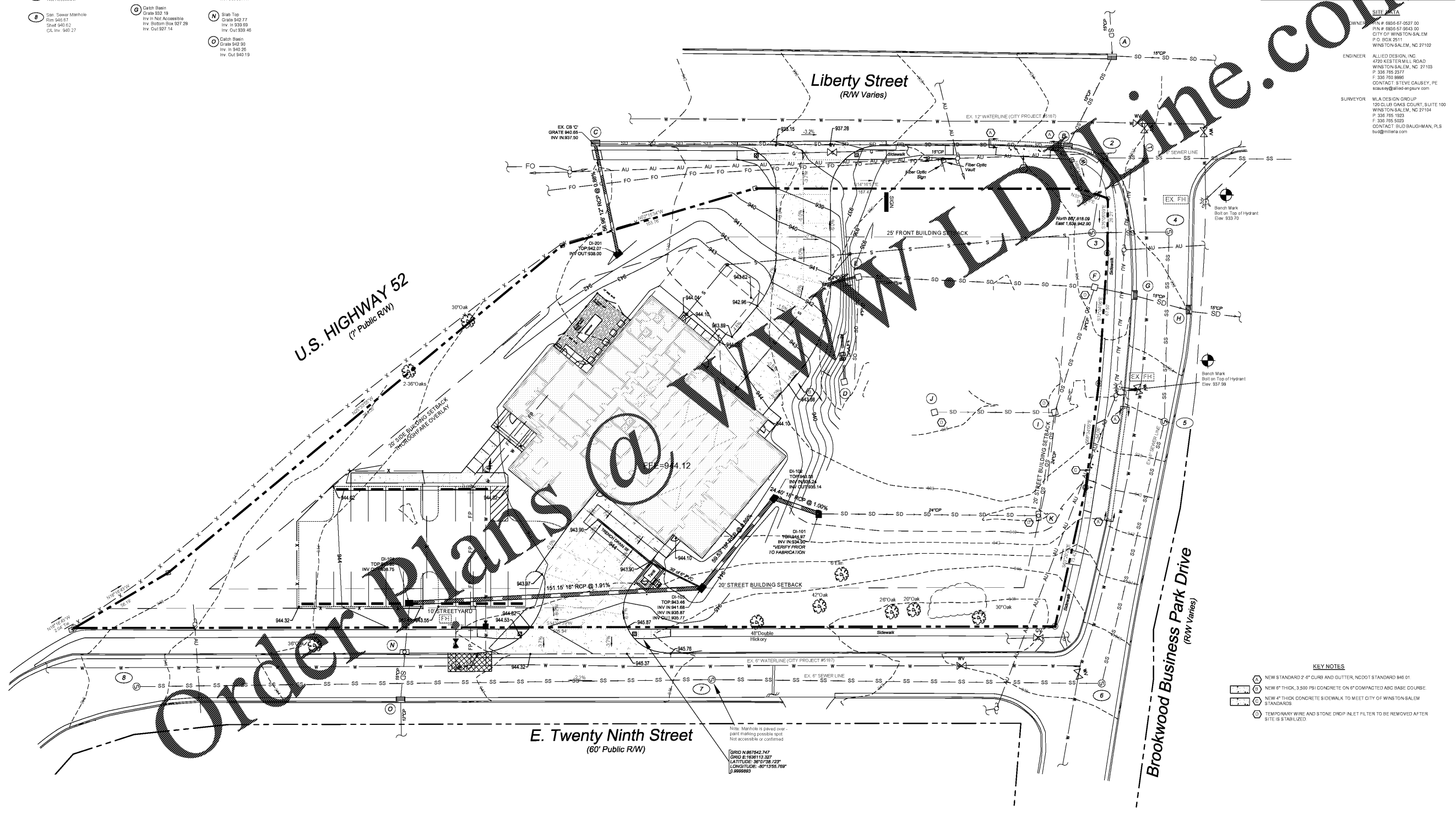


City of Winston-Salem
FIRE STATION 3
 WINSTON-SALEM • NORTH CAROLINA

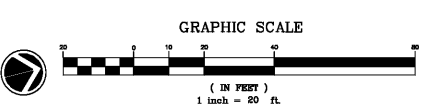
FINAL GRADING PLAN

THESE DRAWINGS ARE INSTRUMENTS OF SERVICE AND SHALL REMAIN THE PROPERTY OF THE ARCHITECT. NO PART OF THESE DRAWINGS OR ANY PART THEREOF IS TO BE REPRODUCED OR TRANSMITTED IN ANY FORM OR BY ANY MEANS, WITHOUT THE WRITTEN PERMISSION OF THE ARCHITECT.

DRAWN: _____
 CHECKED: _____
 COMM: 1904
 DATE: 02-12-21
 REVISION: 03-12-21
C7



- KEY NOTES**
- 1 NEW STANDARD 2'-6" CURB AND GUTTER, NCDOT STANDARD 846.01
 - 2 NEW 6" THICK, 3,500 PSI CONCRETE ON 6" COMPACTED ABC BASE COURSE.
 - 3 NEW 4" THICK CONCRETE SIDEWALK TO MEET CITY OF WINSTON-SALEM STANDARDS
 - 4 TEMPORARY WIRE AND STONE DIMP INLET FILTER TO BE REMOVED AFTER SITE IS STABILIZED.



Order Plans @

WWW.LDLINE.COM