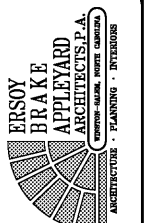
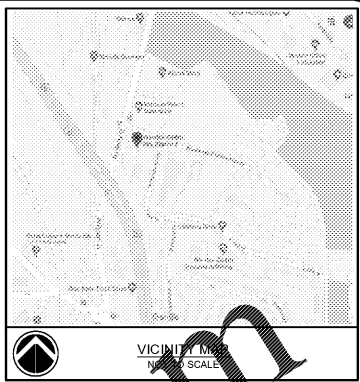
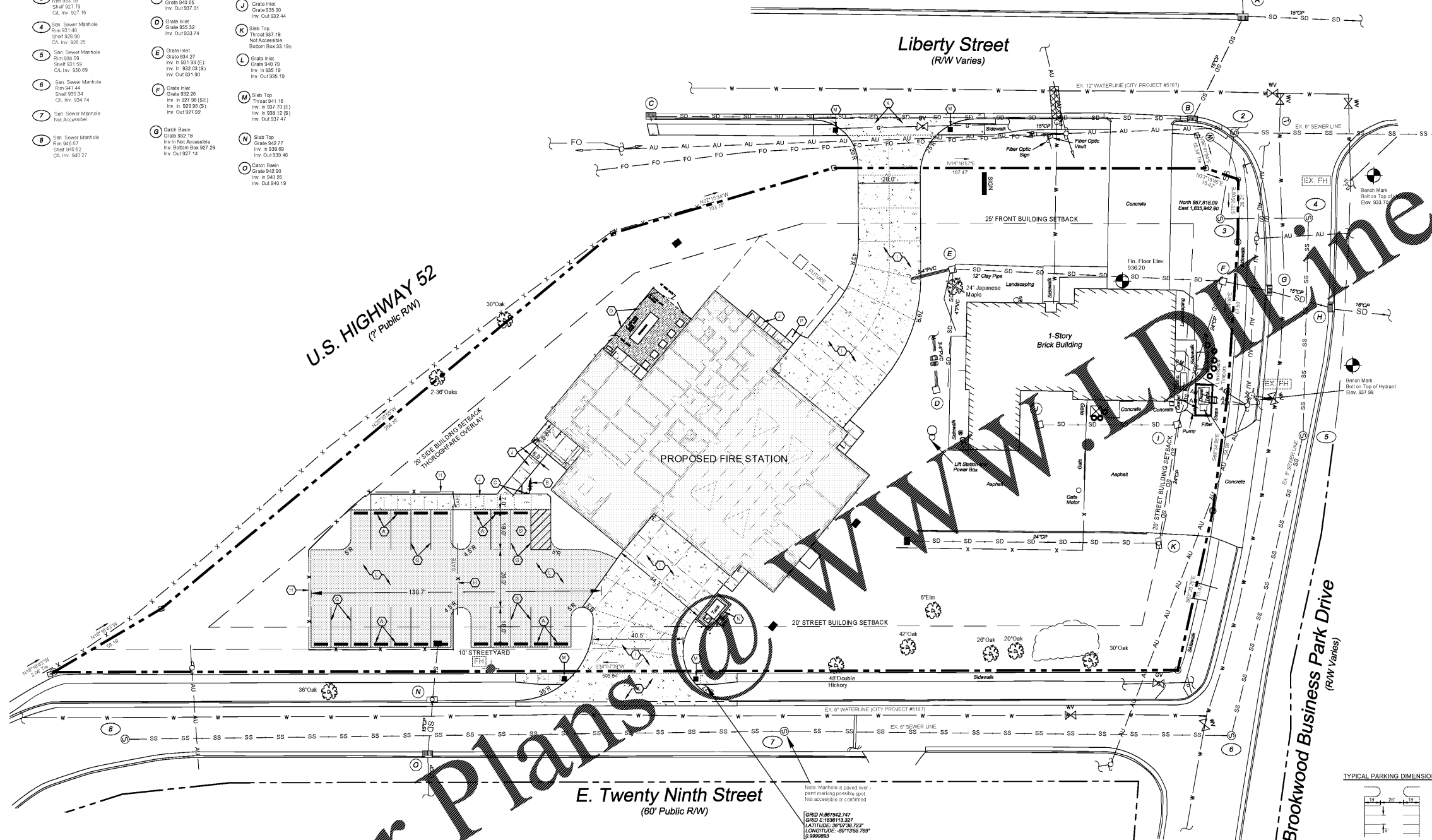


Sanitary Sewer Information

- 1 San. Sewer Manhole
Rim 920.52
Sheet 920.47
CL Inv. 921.82
- 2 San. Sewer Manhole
Rim 920.28
Sheet 920.38
CL Inv. 925.92
- 3 San. Sewer Manhole
Rim 920.19
Sheet 921.79
CL Inv. 927.15
- 4 San. Sewer Manhole
Rim 921.46
Sheet 926.90
CL Inv. 928.25
- 5 San. Sewer Manhole
Rim 920.09
Sheet 931.59
CL Inv. 930.89
- 6 San. Sewer Manhole
Rim 941.44
Sheet 935.34
CL Inv. 934.74
- 7 San. Sewer Manhole
Not Accessible
- 8 San. Sewer Manhole
Rim 940.67
Sheet 940.62
CL Inv. 940.27

Storm Sewer Information

- A Catch Basin
Grate 932.14
Inv. In 927.05 (W)
Inv. In 926.36 (E)
Inv. Out 926.09
- B Catch Basin
Grate 932.86
Not Accessible
Bottom Box 926.86
- C Catch Basin
Grate 940.85
Inv. Out 937.01
- D Grate Inlet
Grate 935.32
Inv. Out 933.74
- E Grate Inlet
Grate 934.27
Inv. In 931.99 (E)
Inv. In 932.03 (S)
Inv. Out 931.95
- F Grate Inlet
Grate 932.26
Inv. In 927.96 (SE)
Inv. In 929.96 (S)
Inv. Out 927.92
- G Catch Basin
Grate 932.19
Inv. In Not Accessible
Inv. Bottom Box 927.29
Inv. Out 927.14
- H Catch Basin
Grate 932.01
Inv. In 926.23
Inv. Out 926.23
- I Grate Inlet
Grate 935.43
Inv. In 931.58 (SE)
Inv. In 931.69 (S) Inv. Out
931.43
- J Grate Inlet
Grate 935.00
Inv. Out 932.44
- K Slab Top
Throat 937.18
Not Accessible
Bottom Box 33.19s
- L Grate Inlet
Grate 940.73
Inv. In 935.19
Inv. Out 935.19
- M Slab Top
Throat 941.16
Inv. In 937.70 (E)
Inv. In 938.12 (S)
Inv. Out 937.47
- N Slab Top
Grate 942.77
Inv. In 938.69
Inv. Out 939.46
- O Catch Basin
Grate 940.90
Inv. In 940.26
Inv. Out 940.19



Allied Design, Inc.
CIVIL ENGINEER/PLANNING/SURVEYING
4720 KESTER HILL ROAD
WINSTON-SALEM, NORTH CAROLINA 27103
Phone: (336) 765-2377
Fax: (336) 765-8886
http://www.alliedesign.com
FROM LICENSE C-181



SITE DATA
OWNER: WINSTON-SALEM FIRE DEPARTMENT
P/N # 8836-67-0527-00
P/N # 8836-57-9643-00
CITY OF WINSTON-SALEM
P.O. BOX 2511
WINSTON-SALEM, NC 27102

ENGINEER: ALLIED DESIGN, INC.
4720 KESTER HILL ROAD
WINSTON-SALEM, NC 27103
P: 336-765-2377
F: 336-765-8886
CONTACT: STEVE CAUSEY, PE
steve@alliedesign.com

SURVEYOR: M.A. DESIGN GROUP
120 CLAR OAKS COURT, SUITE 100
WINSTON-SALEM, NC 27104
P: 336-765-1020
F: 336-765-5020
CONTACT: BUD BAUGHMAN, PLS
bud@mlarla.com

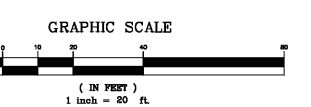
REVIEW INFORMATION	
TYPE OF REVIEW	<input checked="" type="checkbox"/> PERMITTING
JURISDICTION	<input checked="" type="checkbox"/> CITY OF WINSTON-SALEM
PURPOSE STATEMENT: THE PURPOSE OF THIS REQUEST IS TO:	OBTAIN PERMITS FOR CONSTRUCTION
INFRASTRUCTURE	
WATER	<input checked="" type="checkbox"/> PUBLIC <input type="checkbox"/> PRIVATE
SEWER	<input checked="" type="checkbox"/> PUBLIC <input type="checkbox"/> PRIVATE
STREETS	<input checked="" type="checkbox"/> PUBLIC <input type="checkbox"/> PRIVATE
SITE SIZE AND COVERAGES	
SEE CALCULATIONS TO THE LEFT	
ZONING	
EXISTING ZONING	IP
PROPOSED ZONING	IP
PROPOSED USES	FIRE STATION
BUILDING SETBACKS	
FRONT	25'
REAR	10'
SIDE	5'
STREET	20'
OFF-STREET PARKING	
PROPOSED USE(S)	FIRE STATION
REQUIRED PARKING	3 SPACES PLUS 1 SPACE/EMPLOYEE ON-ACCESS SHEET
REQUIRED PARKING	3 PLUS 15 (2MP COVERS) = 18 SPACES
PARKING PROVIDED	20 SPACES (INCL. 1 HC)
BICYCLE SPACES REQUIRED	2 MINIMUM
BICYCLE SPACES PROVIDED	1-2 BIKE RACK
BUFFERYARDS	
ADJOINING ZONING	N/A
TYPE REQUIRED	20' THOROUGHFARE OVERLAY
WIDTH PROVIDED	20' FT

- GENERAL NOTES**
- EXISTING SITE BOUNDARY AND TOPOGRAPHY INFORMATION TAKEN FROM A SURVEY PROVIDED BY M.A. DESIGN GROUP.
 - ALL DEVELOPMENT SHALL CONFORM WITH THE FORSYTH COUNTY "UNIFIED DEVELOPMENT ORDINANCE".
 - ALL DIMENSIONS ARE TO EDGE OF PAVEMENT, FACE OF CURB AND FACE OF BUILDING, UNLESS OTHERWISE NOTED. VERIFY ALL BUILDING DIMENSIONS WITH ARCHITECT PRIOR TO START OF CONSTRUCTION.
 - JURISDICTION: CITY OF WINSTON-SALEM
 - WATERBORN DATA SITE IS NOT LOCATED WITHIN A WATER SUPPLY WATERSHED DISTRICT

ANY CHANGE OR ADDITIONS TO EXTERIOR LIGHTING WILL NEED TO COMPLY WITH UDO-286 "STANDARDS FOR OUTDOOR LIGHTING".

IF PARKING LOT LIGHTING IS PROPOSED, A SEPARATE APPROVAL WITH AN ENGINEERED LIGHTING PLAN SHOWING THE LIGHTS AND THE 0.2 FOOT-CANDLE CONTAINED ON THE SIGHT WILL BE REQUIRED - UDO § 6.6 COMPLIANT.

REFER TO LANDSCAPE PLAN (SHEET L-1) FOR TREE SAVE AREA SUMMARY CALCULATIONS.



BUA CALCULATIONS		
FIRE STATION 3		
February 12, 2021		
TOTAL SITE AREA	53,310	1.524
EXISTING BUA	9,735	0.223
PAVEMENT/GRAVEL	25,867	0.575
TOTAL	34,792	0.799
PERCENT BUA		43.31%
INITIAL BUA TO BE REMOVED		
BUILDING	6,236	0.131
PAVEMENT/GRAVEL	14,925	0.333
TOTAL	15,355	0.444
PROPOSED BUA		
BUILDING	10,861	0.249
PAVEMENT/GRAVEL	15,822	0.363
TOTAL	26,686	0.613
ADDITIONAL BUA REMOVED		
BUILDING	4,797	0.110
PAVEMENT/GRAVEL	10,638	0.244
TOTAL	15,437	0.354
FINAL DEVELOPMENT BUA		
BUILDING	10,861	0.249
PAVEMENT/GRAVEL	15,822	0.363
TOTAL	26,686	0.613
PERCENT BUA		31.84%

- KEY NOTES**
- NEW CONCRETE WHEEL STOPS
 - NEW "INVERTED U" TYPE BICYCLE RACK TO HOLD A MINIMUM OF TWO BICYCLES
 - NEW RT & AND RT-80 HANDICAP SIGNS WITH "VAN ACCESSIBLE" SIGN MOUNTED BELOW (WHEN APPLICABLE) IN ACCORDANCE WITH ADA REQUIREMENTS
 - REQUIRED HANDICAP SPACES - THESE SPACES DO NOT REQUIRE PAINT MARKINGS ON ASPHALT TO DESIGNATE HANDICAP PARKING
 - NEW STANDARD 2'-4" CURB AND GUTTER, NCDOT STANDARD 846.01
 - NEW HANDICAP RAMP IN ACCORDANCE WITH ADA ACCESSIBILITY GUIDELINES
 - NEW 4" WHITE PAVEMENT MARKING
 - NEW 6" TALL CHAINLINK FENCE WITH BUILDING GATE AND PEDESTRIAN GATE WITH PANIC BAR CONTROL MOUNTED. COORDINATE WITH ARCHITECTURAL PLANS. A SEPARATE SUBMITTAL IS REQUIRED FOR THIS WORK. CONTRACTOR TO SUBMIT DIRECTLY TO INSPECTIONS DIVISION AND PAY ALL PERMIT FEES.
 - NEW 6" THICK, 3,500 PSI CONCRETE ON 6" COMPACTED ABC BASE COURSE
 - NEW 4" THICK CONCRETE SIDEWALK
 - NEW CITY OF WINSTON-SALEM DRIVEWAY APRON BUILT TO RIGHT-OF-WAY. DRIVEWAY APRON SHALL BE CONSTRUCTED BY A BONDED AND LICENSED CONTRACTOR
 - NEW ASPHALT PAVEMENT - PROVIDE 1.5" S-55 SURFACE COURSE ON 3" S-10 BINDER COURSE ON 6" COMPACTED ABC BASE COURSE
 - INCORPORATE NEW DRIVEWAY AND EXISTING SIDEWALKS INTO HANDICAP RAMPRAP/CURBS. RAMP SHALL BE IN ACCORDANCE WITH ADA ACCESSIBILITY GUIDELINES AND HAVE SOME DETECTABLE MARKINGS INSTALLED IN ACCORDANCE WITH CITY OF WINSTON-SALEM REQUIREMENTS
 - RELOCATED DIESEL FUELS TANK. PROVIDE NEW STEPS, LANDSCAPE TIMBERS AND STONE SIMILAR TO EXISTING TANK. COORDINATE WITH OWNER TO DRAW DOWN TANK PRIOR TO RELOCATING. PROVIDE NEW 6" BOLLARDS AROUND STREET FACING PERIMETER AS INDICATED. COORDINATE TO VERIFY UNDERGROUND STORM PIPE LOCATION AND ADJUST BOLLARD LOCATIONS AS NEEDED. A SEPARATE PERMIT IS REQUIRED FOR THIS WORK. CONTRACTOR TO SUBMIT DIRECTLY TO INSPECTIONS DIVISION AND PAY ALL PERMIT FEES.
 - PROVIDE CHAINLINK FENCE AND GATES AROUND EQUIPMENT YARD, WITH COMPACTED GRAVEL BASE. REFER TO SHEET A-1 FOR ADDITIONAL INFORMATION
 - FLAGPOLE. REFER TO SHEET A-1 AND CONTRACT DOCUMENTS FOR FURTHER INFORMATION

Order Plans @

City of Winston-Salem
FIRE STATION 3
WINSTON-SALEM • NORTH CAROLINA

SITE LAYOUT PLAN

THESE CHANGES ARE MEASUREMENTS OF SERVICE AND SHALL REMAIN THE PROPERTY OF THE ARCHITECT. WHETHER THE PROJECT FOR WHICH THEY ARE MADE IS EXECUTED OR NOT, THEY ARE NOT TO BE USED BY THE OWNER OR ANY OTHER PERSON OR ENTITY WITHOUT THE WRITTEN PERMISSION OF THE ARCHITECT.

DRAWN: _____
CHECKED: _____
COMM: 1904
DATE: 02-12-21
REVISION: 03-12-21

C4