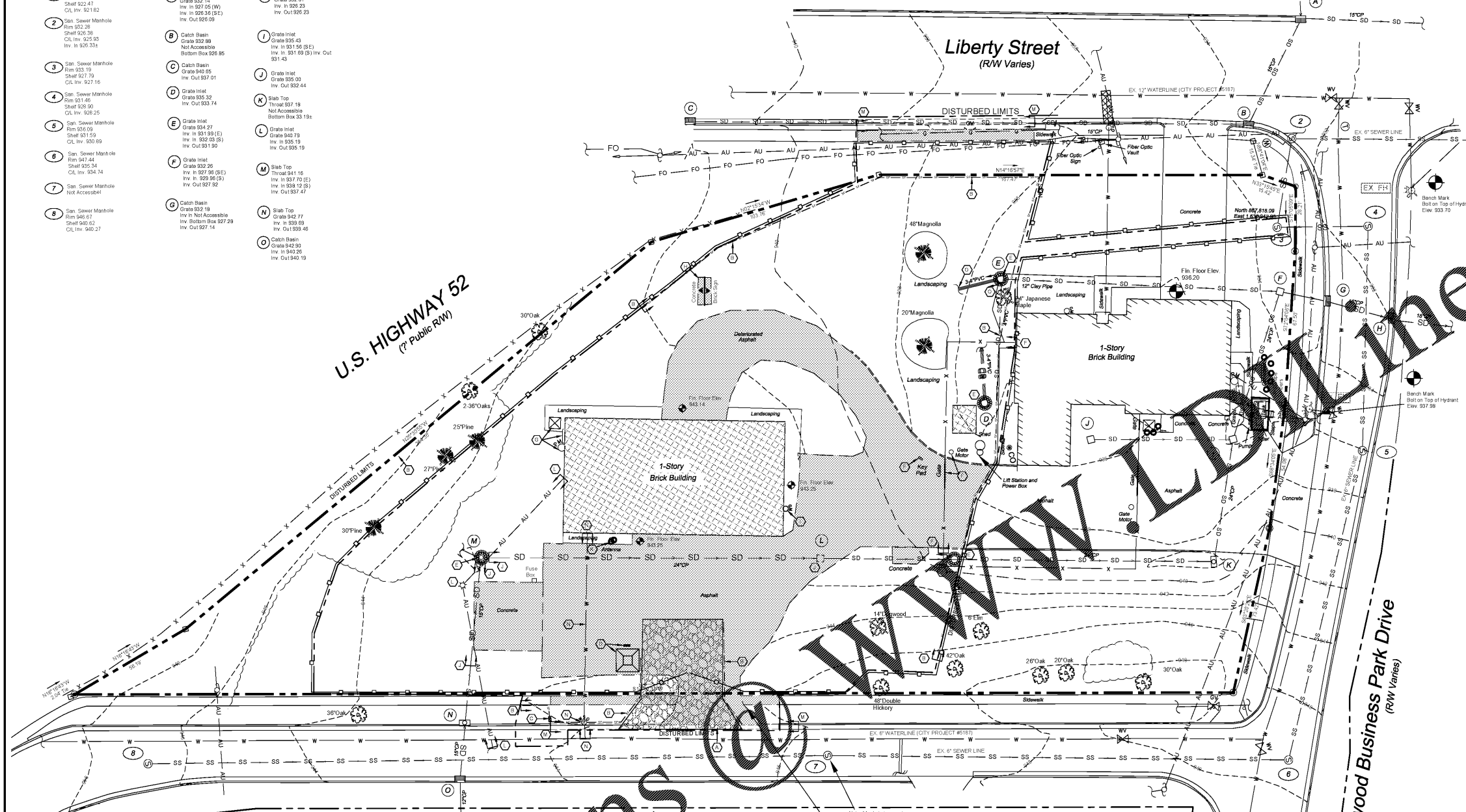
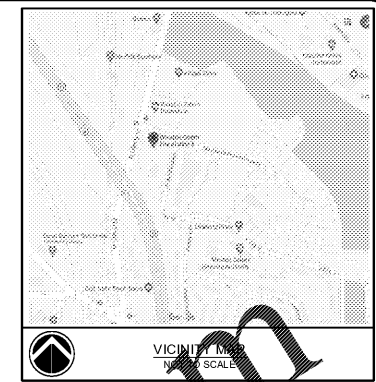


- Sanitary Sewer Information**
- San. Sewer Manhole
Rim 920.52
Sheet 920.47
C.I. Inv. 921.82
 - San. Sewer Manhole
Rim 922.28
Sheet 921.38
C.I. Inv. 926.34
 - San. Sewer Manhole
Rim 923.19
Sheet 921.79
C.I. Inv. 927.15
 - San. Sewer Manhole
Rim 923.46
Sheet 922.90
C.I. Inv. 928.25
 - San. Sewer Manhole
Rim 923.69
Sheet 923.59
C.I. Inv. 930.89
 - San. Sewer Manhole
Rim 924.41
Sheet 924.34
C.I. Inv. 934.27
 - San. Sewer Manhole
Rim 924.67
Sheet 924.62
C.I. Inv. 940.27
- Storm Sewer Information**
- Catch Basin
Grate 932.14
Inv. in 927.05 (W)
Inv. in 926.36 (E)
Inv. Out 926.09
 - Catch Basin
Grate 932.89
Not Accessible
Bottom Box 926.85
 - Catch Basin
Grate 940.85
Sheet 937.79
Inv. Out 937.01
 - Catch Basin
Grate 933.32
Not Accessible
Bottom Box 933.14
 - Grate Inlet
Grate 934.21
Inv. in 931.99 (E)
Inv. in 932.03 (S)
Inv. Out 931.92
 - Grate Inlet
Grate 932.26
Inv. in 927.96 (SE)
Inv. in 928.09 (S)
Inv. Out 927.92
 - Catch Basin
Grate 932.19
Inv. Bottom Box 927.29
Inv. Out 927.14
 - Catch Basin
Grate 932.01
Inv. in 926.23
Inv. Out 926.23
 - Grate Inlet
Grate 935.43
Inv. in 931.58 (SE)
Inv. in 931.69 (S) Inv. Out 931.43
 - Grate Inlet
Grate 935.03
Inv. Out 932.44
 - Slab Top
Throat 937.18
Not Accessible
Bottom Box 33.194
 - Grate Inlet
Grate 940.73
Inv. in 935.19
Inv. Out 935.19
 - Slab Top
Throat 941.16
Inv. in 938.09
Inv. Out 933.46
 - Slab Top
Throat 942.77
Inv. in 938.09
Inv. Out 933.46
 - Catch Basin
Grate 942.93
Inv. in 940.26
Inv. Out 940.19



EROSION CONTROL CONSTRUCTION SEQUENCE

1. OBTAIN GRADING/EROSION CONTROL PLAN APPROVAL AND PERMIT FROM THE NC DEMLR
2. CONTACT EROSION CONTROL INSPECTOR TO ESTABLISH A PRE-CONSTRUCTION CONFERENCE AND INSPECTION SCHEDULE
3. SELF INSPECTION - EFFECTIVE OCTOBER 1, 2010, PERSONS CONDUCTING LAND-USE/EROSION ACTIVITIES LARGER THAN ONE (1) ACRE MUST INSPECT THEIR PROJECT AFTER EACH PHASE OF THE PROJECT, AND DOCUMENT THE INSPECTION IN WRITING ON APPROVED FORMS AVAILABLE FROM THE CITY OF WINSTON-SALEM. THE PHASES ARE AS FOLLOWS:
 1. INSTALLATION OF PERIMETER EROSION AND SEDIMENT CONTROL MEASURES
 2. CLEARING AND GRUBBING OF EXISTING GROUND COVER
 3. COMPLETION OF ANY PHASE OF GRADING OF SLOPES OR FILLS
 4. INSTALLATION OF STORM DRAINAGE FACILITIES
 5. COMPLETION OF CONSTRUCTION OR DEVELOPER'S EFFORTS TO RESTRAIN EROSION
 6. ESTABLISHMENT OF PERMANENT GROUND COVER SUFFICIENT TO RESTRAIN EROSION
4. INSTALLATION OF PERIMETER EROSION CONTROL MEASURES AS FOLLOWS:
 - A. TEMPORARY CONSTRUCTION ENTRANCE/EXIT
 - B. TEMPORARY SEDIMENT BARRIERS - FOR SITES GREATER THAN ONE (1) ACRE - OUTLET STRUCTURES (SKIMMERS) THAT ONLY WITHDRAW WATER FROM THE SURFACE OF THE BASIN, SHALL BE UTILIZED - NO SEDIMENT TRAPS OR BERM DAMS ALLOWED
 - C. TEMPORARY DIVERSION BERMS
 - D. TEMPORARY SILT FENCING
5. SEED EMBRANKMENTS AND DISTURBED AREAS OF DEVICES (INCLUDING TO LEAK WATER OVERFLOW) UPON COMPLETION OF CONSTRUCTION. SEE GROUND STABILIZATION CRITERIA BELOW FOR MORE INFORMATION.
6. EROSION CONTROL MAINTENANCE PLAN - INSTALL ADDITIONAL EROSION CONTROL MEASURES AS REQUIRED
7. INSTALL STORM DRAINAGE SYSTEM AND UTILITIES. STORM PIPING SHALL BE INSTALLED TO THE POINT WHERE IT ENTERS EACH DEVICE. COMPLETION OF PIPING WILL ONLY BE ALLOWED ONCE THE SITE HAS BEEN STABILIZED. THE EROSION CONTROL INSPECTOR SHALL VERIFY THE PROTECTION AND ALL INLETS AS STORM DRAIN SYSTEM IS INSTALLED

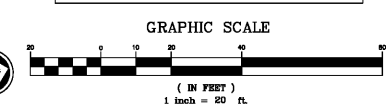
GROUND STABILIZATION CRITERIA

SITE AREA DESCRIPTION	STABILIZATION TIMEFRAME	STABILIZATION TIMEFRAME EXCEPTIONS
PERIMETER DIKES, SWALES, DITCHES, & SLOPES	7 DAYS	NONE
SLOPES STEEPER THAN 3:1	7 DAYS	IF SLOPES ARE 10' OR LESS IN LENGTH & ARE NOT STEEPER THAN 2:1, 14 DAYS ALLOWED
SLOPES 3:1 OR FLATTER	14 DAYS	7 DAYS FOR SLOPES > 50 FEET IN LENGTH
ALL OTHER AREAS WITH SLOPES FLATTER THAN 4:1	14 DAYS	NONE

EROSION CONTROL MAINTENANCE PLAN

1. INSPECT ALL SEDIMENTATION AND EROSION CONTROL DEVICES FOR STABILITY AND FUNCTION EACH WEEK AND FOLLOWING EACH RAINFALL EVENT.
2. REMOVE SILT/SEDIMENT FROM TEMPORARY DEVICES WHEN ACCUMULATED VOLUME HAS REACHED 75% CAPACITY.
3. REMOVE ACCUMULATED SILT/SEDIMENT FROM BEHIND TEMPORARY SEDIMENT FENCE WHEN DEPTH EXCEEDS APPROXIMATELY 8" - REPAIR AND REPLACE SILT FENCE AS NECESSARY.
4. SEED AND STABILIZE TEMPORARY DIVERSION BERMS IMMEDIATELY AFTER CONSTRUCTION INCLUDING "CLEAN" WATER DIVERSION BERMS - RE-GRAD/REPAIR BERMS AS REQUIRED.
5. CONTRACTOR SHALL APPOINT AN ON-SITE INSPECTOR AND MAINTAIN RECORDS OF INSPECTIONS IN ACCORDANCE WITH THE PROVISIONS OF THE GENERAL NOTES 3 FORMER TYPED DISCHARGE PERMIT FOR CONSTRUCTION ACTIVITIES.

REFER TO LANDSCAPE PLAN (SHEET L-1) FOR TREE SAVE AREA SUMMARY CALCULATIONS.



GRID N:87942.747
GRID E:109113.818
LATITUDE: 36°07'38.723"
LONGITUDE: -80°19'55.769"
G:569668

KEY NOTES

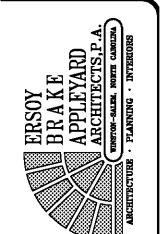
- TEMPORARY CONSTRUCTION ENTRANCE/EXIT
- TEMPORARY SEDIMENT FENCE
- TEMPORARY SEDIMENT FENCE WITH STONE STABILIZATION
- TEMPORARY ON-SITE CONCRETE WASHOUT STRUCTURE WITH LINER - PROVIDE CLEARLY MARKED SIGNAGE NOTING DEVICE LOCATION
- TEMPORARY WIRE AND STONE DRAIN PILE FILTER
- EXISTING FENCE, GATE, GATE MOTOR AND KEY PAD TO BE REMOVED
- EXISTING ELECTRICAL/MECHANICAL EQUIPMENT ASSOCIATED WITH EXISTING BUILDING TO BE REMOVED
- EXISTING CONCRETE/BRICK SIGN AND ELECTRICAL CONNECTION TO BE REMOVED
- EXISTING GAS METER AND ASSOCIATED GAS LINE TO BE REMOVED COORDINATE WITH PIEDMONT NATURAL GAS
- EXISTING STORM DRAIN PIPE AND STRUCTURE TO BE REMOVED
- EXISTING ANTENNA TO BE REMOVED - COORDINATE WITH OWNER FOR POSSIBLE RE-USE
- EXISTING POWER POLE AND OVERHEAD ELECTRIC LINES TO BE RELOCATED - COORDINATE WITH DUKE ENERGY
- EXISTING CURB AND GUTTER TO BE REMOVED
- EXISTING WATER METER AND SERVICE TO BE REMOVED BACK TO THE MAIN - SAW CUT PAVEMENT TO PROVIDE STRAIGHT AND UNIFORM LINE FOR REMOVAL - PROVIDE PAVEMENT PATCH IN CITY STREET CONSISTING OF 1" 5" 58" SURFACE COURSE OF 3" 19" 90" UNDER COURSE ON "COMPACTED" ABC BASE COURSE
- EXISTING CONCRETE PAVEMENT TO BE REMOVED - SAW CUT EXISTING PAVEMENT TO PROVIDE STRAIGHT AND UNIFORM LINE FOR REMOVAL
- EXISTING BUILDING TO BE DEMOLISHED/DEMOLISHED - EXISTING FOUNDATION SHALL BE COMPLETELY REMOVED
- EXISTING TREES (INCLUDING STUMPS) TO BE REMOVED
- TEMPORARY CHAIN LINK FENCE AROUND CONSTRUCTION ZONE LIMITS MAY BE ADJUSTED - COORDINATE WITH OWNER

GENERAL DEMOLITION NOTES

1. TOTAL SITE AREA = 1.92 ACRES
2. TOTAL DISTURBED AREA (INITIAL PHASE) = 1.21 AC. (52,470 SF) PHASES 1 & 2 = 1.1 AC. (73,985 SF)
3. ALL UTILITIES OR STRUCTURES NOT DESIGNATED FOR REMOVAL OR MODIFICATION ARE TO REMAIN AND BE PROTECTED. ALL UTILITIES OR STRUCTURES DESIGNATED FOR MODIFICATION SHALL BE PROTECTED BY THE CONTRACTOR DURING CONSTRUCTION
4. COORDINATE SHUTDOWN OF EXISTING UTILITIES WITH OWNER. PROVIDE 48 HOUR NOTICE TO OWNER PRIOR TO DISRUPTION OF UTILITY SERVICES. PROVIDE TEMPORARY OR PERMANENT TERMINATION OF UTILITY SERVICES UTILIZING WATER TIGHT MECHANICAL JOINT PLUGS, CAPS OR SEALS
5. THE LOCATION OF ALL EXISTING UNDERGROUND UTILITIES IS APPROXIMATE. THE CONTRACTOR SHALL BE RESPONSIBLE FOR FIELD VERIFYING ALL LISTED UNDERGROUND UTILITIES AND PROPOSED UTILITY CROSSINGS. THE CONTRACTOR SHALL EXERCISE REASONABLE EFFORTS TO PROTECT ANY UNKNOWN UNDERGROUND UTILITIES. NOTIFY ENGINEER IMMEDIATELY IF ANY ELEMENTS ARE DISCOVERED THAT WOULD NECESSITATE DESIGN REVISIONS
6. CONDUCT DEMOLITION OPERATIONS TO PREVENT INJURY TO PEOPLE AND DAMAGE TO ADJACENT BUILDINGS AND FACILITIES TO REMAIN. ENSURE SAFE PASSAGE OF PEOPLE AND LAND DEMOLITION AREA. PROTECT EXISTING SITE IMPROVEMENTS, APPURTENANCES AND LANDSCAPING TO REMAIN
7. USE WATER MIST, TEMPORARY ENCLOSURES AND OTHER SUITABLE METHODS TO LIMIT THE SPREAD OF DUST AND DIRT. COMPLY WITH GOVERNING ENVIRONMENTAL PROTECTION REGULATIONS. DO NOT CREATE HAZARDOUS OR OBJECTIONABLE CONDITIONS, SUCH AS ICE, FLOODING AND POLLUTION, WHEN USING WATER. REMOVE AND TRANSPORT DEBRIS IN A MANNER THAT WILL PREVENT SPILLAGE ON ADJACENT SURFACES AND AREAS
8. CONTRACTOR SHALL REMOVE AND LEGALLY DISPOSE OF DEMOLISHED ITEMS AND MATERIALS PROMPTLY. ON-SITE STORAGE OR SALE OF REMOVED ITEMS IS PROHIBITED. ON-SITE BURNING OF DEMOLISHED MATERIALS WILL NOT BE ALLOWED
9. SALVAGEABLE FILL MATERIALS FROM SITE DEMOLITION DETERMINED ACCEPTABLE BY AN INDEPENDENT SOILS TESTING LABORATORY MAY BE UTILIZED FOR FILL MATERIAL WHERE APPROPRIATE
10. THE CONTRACTOR SHALL BE RESPONSIBLE FOR FIELD VERIFYING ALL ILLUSTRATED UNDERGROUND UTILITIES. THE CONTRACTOR SHALL EXERCISE REASONABLE EFFORTS TO PROTECT ANY UNKNOWN UNDERGROUND UTILITIES. NOTIFY ENGINEER IMMEDIATELY IF ANY ELEMENTS ARE DISCOVERED THAT WOULD NECESSITATE A REVISION TO THE DESIGN
11. A CITY OF WINSTON-SALEM INSPECTOR SHALL BE PRESENT WHEN TERMINATING WATER AND SEWER CONNECTIONS. ALL CONSTRUCTION, MATERIALS, AND SANITATION PROCEDURES SHALL MEET OR EXCEED THE REQUIREMENTS OF THE NORTH CAROLINA PLUMBING CODE AND THE CITY OF WINSTON-SALEM STANDARDS, SPECIFICATIONS AND DETAILS
12. NO SIGNAGE SHALL BE REMOVED TEMPORARILY OR PERMANENTLY FROM THE NODOT RIGHT-OF-WAY. SIGNAGE SHALL BE PROTECTED DURING ALL CONSTRUCTION ACTIVITIES. ANY SIGNAGE DAMAGE DURING CONSTRUCTION SHALL BE REPAIR OR REPLACED AT CONTRACTOR'S EXPENSE
13. ALL EXISTING TREES NOT DESIGNATED FOR REMOVAL SHALL REMAIN AND BE PROTECTED DURING ALL CONSTRUCTION ACTIVITIES. CONTRACTOR SHALL PROVIDE TREE PROTECTION FENCING TO PROTECT EXISTING ROOT SYSTEM AND CANOPY BY SETTING FENCING BACK ONE (1) FOOT RADIUS FOR EACH INCH OF DIAMETER OF TREE
14. ALL POWER POLES, GUY WIRES AND OVERHEAD LINES NOT DESIGNATED FOR REMOVAL SHALL REMAIN AND BE PROTECTED DURING ALL CONSTRUCTION ACTIVITIES

Order Plans

WINSTON-SALEM ONLINE.COM



EROSY
CIVIL ENGINEERING AND SURVEYING
4720 KESTER HILL ROAD
WINSTON-SALEM, NC 27103
Phone: (336) 785-2377
Fax: (336) 780-8886
http://www.erosy.com
FROM LICENSE C-181



City of Winston-Salem
FIRE STATION 3
WINSTON-SALEM • NORTH CAROLINA

DEMOLITION AND INITIAL EROSION CONTROL PLAN

THIS DRAWING AND MEASUREMENTS OF SERVICE ARE THE PROPERTY OF THE ARCHITECT. NO PART OF THIS DRAWING OR MEASUREMENTS SHALL BE REPRODUCED OR TRANSMITTED IN ANY FORM OR BY ANY MEANS WITHOUT THE WRITTEN PERMISSION OF THE ARCHITECT.

DRAWN: WEB
CHECKED: WEB
COMM: TBCA
DATE: 02-12-21
REVISION: C2