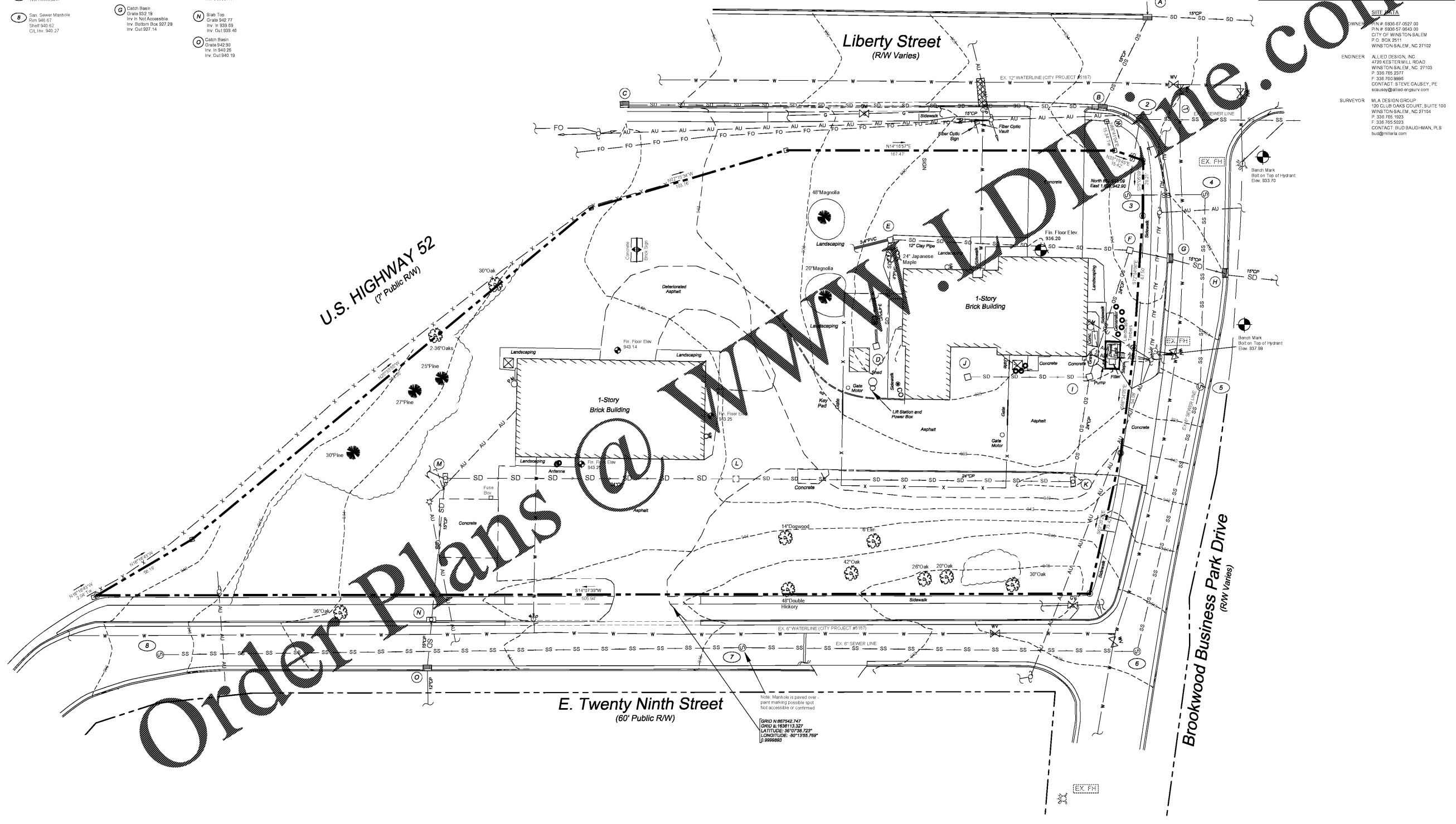
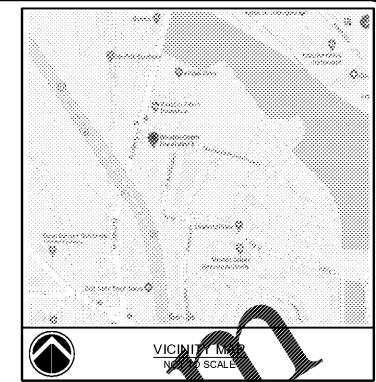


**Sanitary Sewer Information**

- 1 San. Sewer Manhole  
Rim 920.52  
Sheet 922.47  
C/I, Inv. 921.82
- 2 San. Sewer Manhole  
Rim 932.28  
Sheet 922.38  
C/I, Inv. 925.92
- 3 San. Sewer Manhole  
Rim 933.19  
Sheet 927.79  
C/I, Inv. 927.15
- 4 San. Sewer Manhole  
Rim 931.46  
Sheet 928.90  
C/I, Inv. 928.25
- 5 San. Sewer Manhole  
Rim 933.09  
Sheet 931.59  
C/I, Inv. 930.89
- 6 San. Sewer Manhole  
Rim 941.44  
Sheet 935.34  
C/I, Inv. 934.74
- 7 San. Sewer Manhole  
Not Accessible
- 8 San. Sewer Manhole  
Rim 940.67  
Sheet 940.62  
C/I, Inv. 940.27

**Storm Sewer Information**

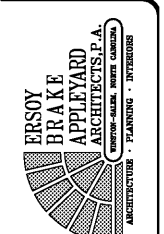
- A Catch Basin  
Grate 932.14  
Inv. in 927.05 (W)  
Inv. in 926.36 (E)  
Inv. Out 926.09
- B Catch Basin  
Grate 932.89  
Not Accessible  
Bottom Box 926.85
- C Catch Basin  
Grate 946.85  
Inv. Out 937.01
- D Grate Inlet  
Grate 933.32  
Inv. Out 933.74
- E Grate Inlet  
Grate 934.21  
Inv. in 931.99 (E)  
Inv. in 932.03 (S)  
Inv. Out 931.95
- F Grate Inlet  
Grate 932.26  
Inv. in 927.96 (SE)  
Inv. in 928.90 (S)  
Inv. Out 927.92
- G Catch Basin  
Grate 932.19  
Inv. in Not Accessible  
Inv. Bottom Box 927.29  
Inv. Out 927.14
- H Catch Basin  
Grate 932.01  
Inv. in 926.23  
Inv. Out 926.23
- I Grate Inlet  
Grate 935.43  
Inv. in 931.58 (SE)  
Inv. in 931.69 (S) Inv. Out  
931.43
- J Grate Inlet  
Grate 935.00  
Inv. Out 932.44
- K Slab Top  
Throat 937.18  
Not Accessible  
Bottom Box 33.194
- L Grate Inlet  
Grate 946.73  
Inv. in 935.19  
Inv. Out 935.19
- M Slab Top  
Throat 941.16  
Inv. in 939.89  
Inv. in 939.17 (S)  
Inv. Out 937.47
- N Slab Top  
Grate 942.77  
Inv. in 939.89  
Inv. Out 939.46
- O Catch Basin  
Grate 942.90  
Inv. in 940.26  
Inv. Out 940.19



**SITE DATA**  
 WINSTON-SALEM, NC 27103  
 P/N # 8836-67-0527 00  
 P/N # 8836-57-9643 00  
 CITY OF WINSTON-SALEM  
 P.O. BOX 2511  
 WINSTON-SALEM, NC 27102

**ENGINEER**  
 ALLED DESIGN, INC.  
 4720 KESTER HILL ROAD  
 WINSTON-SALEM, NC 27103  
 P. 336.765.2277  
 F. 336.765.8866  
 CONTACT: STEVE CAUSEY, PE  
 steve@allegdesign.com

**SURVEYOR**  
 M.A. DESIGN GROUP  
 120 CLUR OAKS COURT, SUITE 100  
 WINSTON-SALEM, NC 27104  
 P. 336.765.1623  
 F. 336.765.5023  
 CONTACT: RUD BAUGHMAN, PLS  
 rud@mla.com



**Allied Design, Inc.**  
 CIVIL ENGINEERING AND SURVEYING  
 4720 KESTER HILL ROAD  
 WINSTON-SALEM, NORTH CAROLINA 27103  
 Phone: (336) 765-2277  
 Fax: (336) 765-8866  
 http://www.allegdesign.com  
 FROM LICENSE C-181



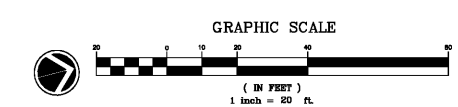
City of Winston-Salem  
**FIRE STATION 3**  
 WINSTON-SALEM • NORTH CAROLINA

EXISTING CONDITIONS PLAN

THESE DRAWINGS ARE INSTRUMENTS OF SERVICE AND SHALL REMAIN THE PROPERTY OF THE ARCHITECT UNLESS THE PROJECT FOR WHICH THEY ARE MADE IS COMPLETED OR NOT, THEY ARE NOT TO BE USED BY THE OWNER OR ANY OTHER PERSON OR ENTITY WITHOUT THE WRITTEN AND SIGNED APPROVAL OF THE ARCHITECT. ANY REPRODUCTION OR DISTRIBUTION OF THESE DRAWINGS WITHOUT THE WRITTEN PERMISSION OF ERSOY BRAKF APPLIYARD ARCHITECTS, P.A. IS STRICTLY PROHIBITED.

DRAWN: WEB  
 CHECKED: WEB  
 COMM: TBCA  
 DATE: 02-12-21  
 REVISION:

C1



Order Plans @ WWW.ALLEDDESIGN.COM