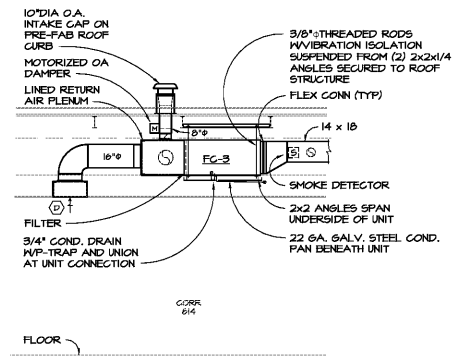
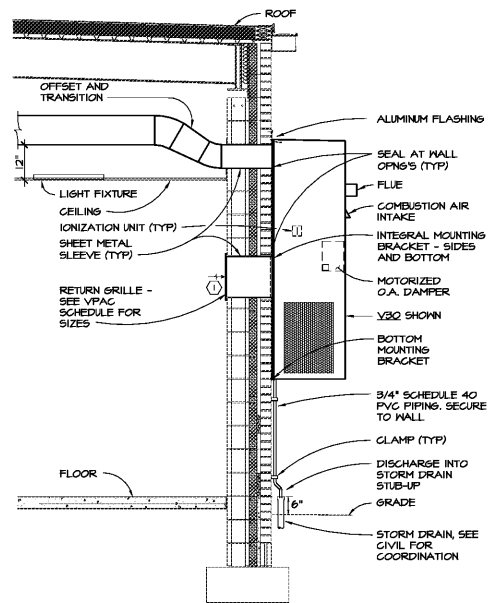


DRAWING ISSUE RECORD		
DATE	REVISIONS	NO.
4-6-2021	ISSUE TO BID	



SECTION 3 @ FC-3  
M.I. 1/4"=1'-0"



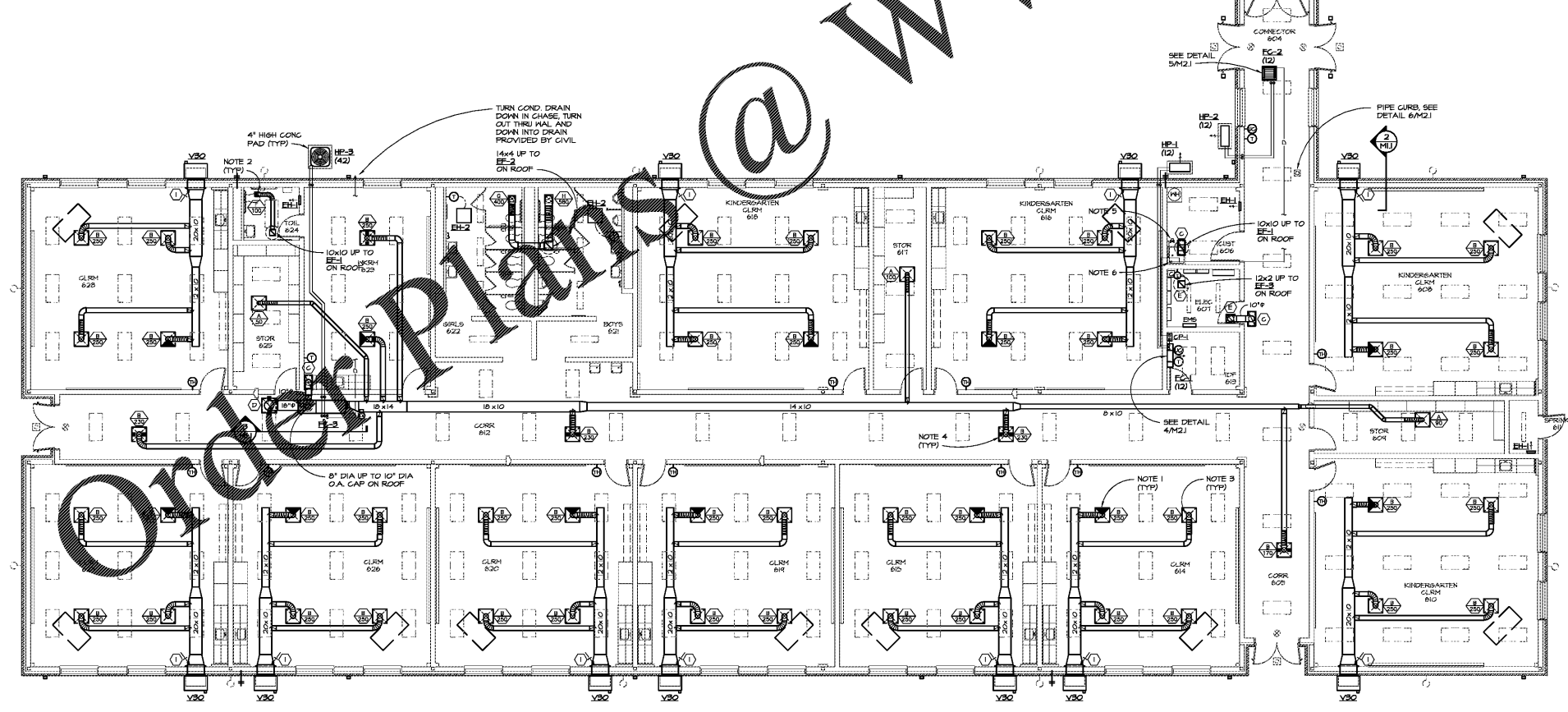
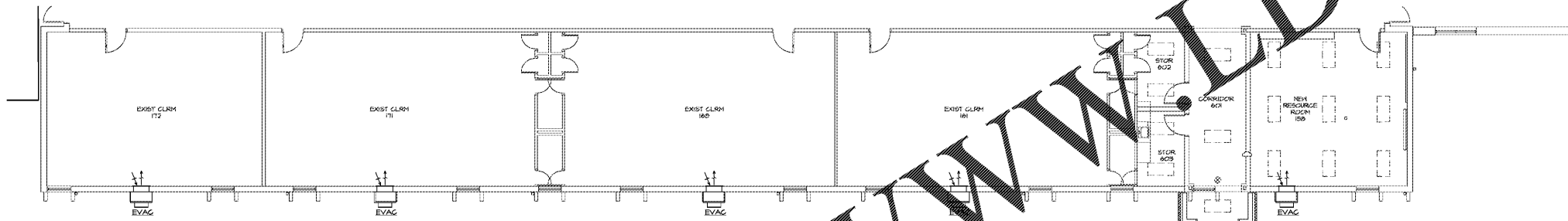
SECTION 2 AT TYPICAL CLRM UNIT  
M.I. 1/2"=1'-0"

GENERAL NOTES: (ALL SHEETS)

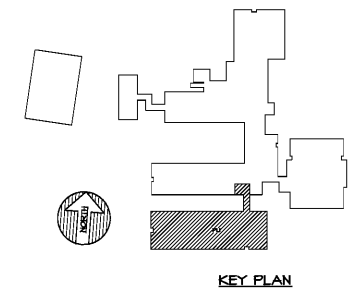
- A. CONTRACTOR SHALL NOTIFY ENGINEER IN WRITING OF ANY DISCREPANCIES OF EXISTING CONDITIONS FROM THAT SHOWN ON PLANS OR OF ANY CONDITION PROHIBITING WORK TO BE INSTALLED AS SHOWN ON PLANS BEFORE WORK IS BEGUN.
- B. ALL PENETRATIONS THROUGH FIRE WALLS AND RATED FLOOR SLABS SHALL BE FIRE STOPPED WITH 3M FIRE BARRIER OR EQUAL PRODUCT MEETING UL 1479 OR ASTM E84 FIRE RATINGS IN ACCORDANCE WITH ARTICLE 300-21 OF THE NATIONAL ELECTRICAL CODE. SEE ARCH. DINGS FOR FIRE STOPPING DETAILS.
- C. ALL MATERIALS EXPOSED WITHIN RETURN AIR PLENUMS ARE REQUIRED TO BE NON-COMBUSTIBLE OR SHALL HAVE A FLAME SPREAD INDEX OF NOT MORE THAN 25 AND A SMOKE DEVELOPED INDEX OF NOT MORE THAN 50 AS DETERMINED IN ACCORDANCE WITH ASTM E84.
- D. WHERE DUCT LINER IS INDICATED ON THE DRAWINGS THE DUCT SIZES SHOWN ON THE DRAWINGS ARE CLEAR INSIDE DIMENSIONS AFTER THE LINER IS INSTALLED. INCREASE THE SIZE OF THE METAL DUCT TO ALLOW FOR THE LINER.
- E. IONIZATION DEVICES ARE NOT SHOWN ON FLOOR PLANS BUT SHALL BE INSTALLED FOR EACH PIECE OF AIR CONDITIONING EQUIPMENT PER SCHEDULE FOUND ON SHEET M2.1.
- F. SEE ELECTRICAL LIGHTING PLANS FOR LOCATION AND QUANTITY OF OCCUPANCY SENSORS AND RELAYS.

REFERENCED NOTES: (ALL SHEETS)

1. SHADED DIFFUSER QUADRANT INDICATES 3-WAY DIFFUSER ORIENTED TO BLOW AWAY FROM SHADED PORTION. TWO QUADRANTS SHADED INDICATES 2-WAY BLOW. 3 QUADRANTS SHADED INDICATES 1-WAY BLOW. SEE DETAIL 1M2.1.
2. DUCT TO PLENUM CONNECTION, SEE DETAIL 2M2.1.
3. INSTALL FLEX SUPPORT, TYPICAL ON DIFFUSERS AND GRILLES. SEE DETAIL 3M2.1.
4. INSTALL SMOKE DAMPER IN NEG. P. DIFFUSER.
5. ELECTRONIC SOLENOID TRAP PRIMER FOR STORM DRAIN. SEE SCHEDULE AND EDS.
6. DROP COLLECTIVE CONDENSATE DRAIN THROUGH CEILING INSIDE ESCHUTHEON PLATE AND DISCHARGE TO MOP SINK ABOVE OVERFLOW LEVEL. SECURE DRAIN LINE TO WALL.



FLOOR PLAN - HVAC  
M.I. 1/8"=1'-0"



**SPURLOCK & ASSOCIATES, INC.**  
consulting engineers  
2970 Clairmont Rd., Suite 620 | Atlanta, GA 30329  
P. 404.633.0245 | F. 404.633.1756  
GA JOB NO. 2185

cunningham forehand matthews moore

ADDITION TO COLHAM FERRY  
ELEMENTARY SCHOOL  
191 COLHAM FERRY ROAD, WATKINSVILLE, GA 30677  
FOR BOARD OF EDUCATION  
OCONEE COUNTY, GA  
DOE FACILITY CODE 3050

cunningham, forehand, matthews & moore, architects, inc. - 2011 manchester street, n.e. - atlanta, georgia 30324 - phone (404) 873-2152