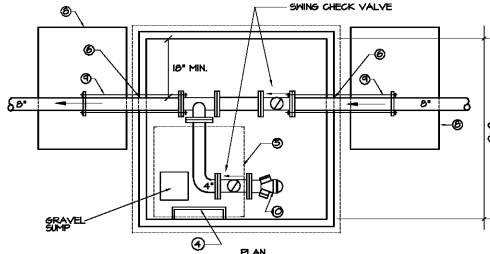
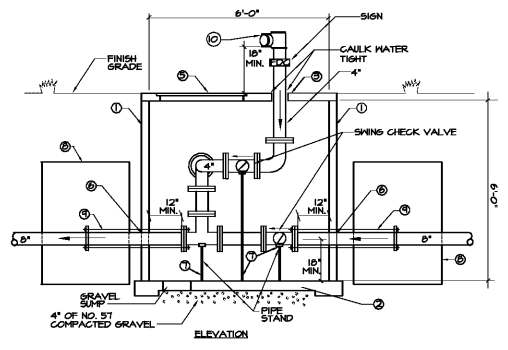


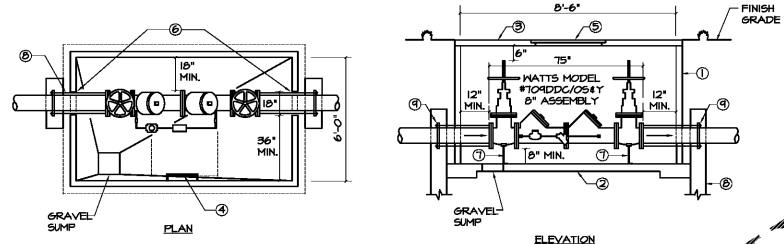
SITE PLUMBING LEGEND

SYMBOL	DESCRIPTION
---	SOIL OR WASTE ABOVE SLAB
---	SOIL OR WASTE PIPING BELOW SLAB OR GRADE
---	COLD WATER PIPING
---	RAIN WATER BELOW SLAB OR GRADE
---	PIPING TO BE REMOVED
---	GAS PIPING
---	GAS PIPING BELOW GRADE
---	HIGH PRESSURE GAS PIPING
---	IRRIGATION
---	GATE VALVE OR BALL VALVE
---	CHECK VALVE
---	PRESSURE REDUCING VALVE
---	GAS COCK
---	POST INDICATING VALVE
---	FLOOR DRAIN "X" INDICATES TYPE
---	CLEANOUT IN FLOOR SLAB OR FINISH GRADE
---	PIPE TURNING UP
---	PIPE TURNING DOWN
---	TEE CONNECTION IN SIDE OF PIPE
---	TEE CONNECTION IN TOP OF PIPE
---	UNION
---	END CAP
---	P.V. POST INDICATING VALVE
---	R.H. RAIN WATER PIPING
---	F.D.C. FIRE DEPARTMENT CONNECTION
---	F. FIRE LINE
---	H. FIRE HYDRANT
---	INV. / I.E. INVERT ELEVATION
---	EXIST. / EX. EXISTING
---	DN. DOWN
---	CO. CLEAN OUT
---	ECO. EXISTING CLEAN OUT
---	BFF / B/F. BELOW FINISHED FLOOR / BELOW FLOOR
---	B/G. BELOW GRADE
---	H. WASTE
---	CH. COLD WATER
---	ROW/RW. RIGHT OF WAY



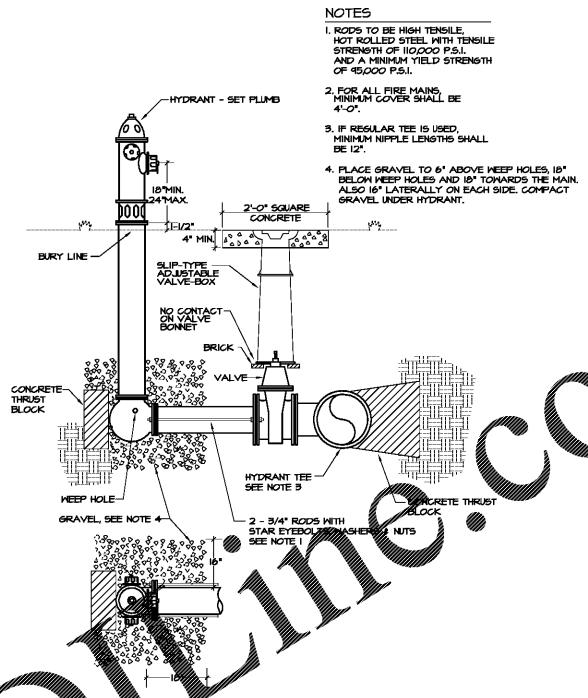
- VAULT SPECIFICATIONS:**
- VAULT SHALL BE PRECASTED REINFORCED CONCRETE.
 - VAULT BOTTOM SHALL BE 4" POURED CONCRETE SLAB, SLOPED TO GRAVEL SUMP. SLAB TO BE POURED ON 4" OF NO. 5T COMPACTED STONE.
 - VAULT TOP SHALL BE REINFORCED CONCRETE WITH 36" X 36" ACCESS OPENING, OFFSET TO ONE SIDE.
 - ACCESS LADDER DOVELETED TO WALL AND CENTERED AT ACCESS OPENING.
 - HATCH COVER: BILCO - ALUMINUM SINGLE MODEL #J-4AL OR EQUAL.
 - VAULT INLET/OUTLET PIPE OPENINGS TO BE SEALED WITH GROUT OR MORTAR. PIPE MUST NOT SUPPORT VAULT.
 - CHECK VALVE AND FITTING DEVICE TO BE SUPPORTED AT THREE (3) POINTS WITH PIPE STAND.
 - THRUST BLOCKING SHALL BE IN ACCORDANCE WITH DETAILS ON DWGS.
 - THRUST TIE RODS SHALL BE BISMUTHIC COATED AND ALL PIPE AND FITTINGS OF DUCTILE IRON.
 - DUAL FIRE DEPARTMENT CONNECTION (FDC).
 - ALL MATERIAL TO BE FURNISHED BY THE CONTRACTOR.

3 FIRE DEPARTMENT CONNECTION DETAIL
PO.2 NO SCALE - SCHEMATIC ONLY

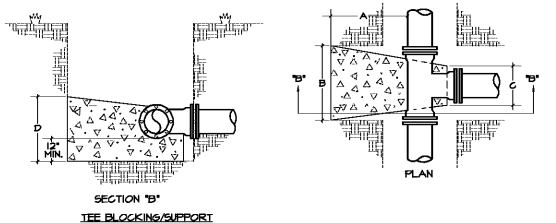


- VAULT SPECIFICATIONS:**
- Vault shall be precast reinforced concrete.
 - Vault bottom 4" poured concrete slab, sloped to gravel sump. Slab to be poured on 4" of No. 5T compacted stone.
 - Vault top shall be reinforced concrete with 36" X 36" access opening, offset to one side.
 - Access ladder doveleted to wall and centered at access opening.
 - Hatch cover: Bilco - Aluminum Single Model #J-4AL or equal.
 - Vault inlet/outlet pipe openings to be sealed with grout or mortar. Pipe must not support vault.
 - BFP device to be supported at two (2) points with pipe stand.
 - Thrust blocking shall be in accordance with SCSB, Fig. #A-24.
 - Thrust tie rods shall be bismuthic coated ductile iron pipe and fittings of ductile iron.
 - Vault to be installed on owner's private property, provided for by a 24" X 30" fitment.
 - All material to be furnished by the contractor.

4 FIRE LINE VAULT & DOUBLE DETECTOR CHECK VALVE DETAIL
PO.2 NO SCALE - SCHEMATIC ONLY (SHOWING MINIMUM CLEARANCE DIMENS.)

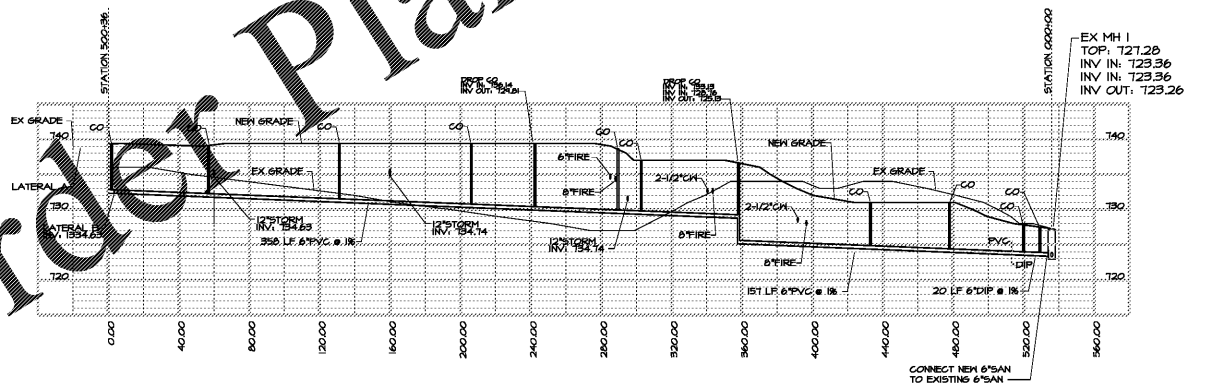


1 FIRE HYDRANT INSTALLATION DETAIL
PO.2 NO SCALE - SCHEMATIC ONLY



BEND	SIZE	(A)	(B)	(C)	(D)	(E)	VOLUME (CU. YDS. APPROX.)	THRUST (LBS.)
11-1/4"	6"	1.0	2.0	6	1.0	0.04	2,160	
	8"	1.0	2.0	7	1.5	0.06	4,408	
	10"	1.0	2.0	4	2.0	0.10	7,668	
45°	6"	1.0	2.0	6	1.0	0.04	2,160	
	8"	1.0	2.0	7	1.5	0.06	4,408	
	10"	1.0	2.0	4	2.0	0.10	7,668	
90°	6"	1.0	2.0	12	2.0	0.18	10,008	
	8"	1.0	2.0	14	3.0	0.36	17,788	
	10"	1.0	2.0	18	3.0	0.74	27,788	
TEES & PLUGS	6"	1.0	2.0	12	1.5	0.10	7,070	
	8"	1.0	2.0	14	2.0	0.21	12,568	
	10"	1.0	2.0	18	2.5	0.50	14,838	

2 CONCRETE THRUST BLOCK DETAIL
PO.2 NO SCALE - SCHEMATIC ONLY



5 S.S. PROFILE - LATERAL A TO EXISTING MH 1
PO.2 HORIZONTAL SCALE: 1" = 40' - 0"
VERTICAL SCALE: 1" = 10' - 0"

NOTES

- RODS TO BE HIGH TENSILE, HOT ROLLED STEEL WITH TENSILE STRENGTH OF 100,000 P.S.I. AND A MINIMUM YIELD STRENGTH OF 45,000 P.S.I.
- FOR ALL FIRE MAINS, MINIMUM COVER SHALL BE 4'-0".
- IF REGULAR TEE IS USED, MINIMUM NIPPLE LENGTHS SHALL BE 12".
- PLACE GRAVEL TO 6" ABOVE KEEP HOLES, 18" BELOW KEEP HOLES AND 18" TOWARDS THE MAIN. ALSO 18" LATERALLY ON EACH SIDE. COMPACT GRAVEL UNDER HYDRANT.

DRAWING ISSUE RECORD

DATE	REVISIONS	NO.
4-8-2019	ISSUE TO BID	

ADDITION TO COLHAM FERRY ELEMENTARY SCHOOL
191 COLHAM FERRY ROAD, MARIETTA, GA 30067
OCONEE COUNTY BOARD OF EDUCATION
OCONEE COUNTY, GA
DDE, FACILITY CODE 3530

cunningham forehand matthews moore

DATE: DECEMBER 15, 2019 JOB NO. B-11-19-1-20
DRAWN BY: J.C.F. CK BY: M.W.D.
PHONE: 30324 - atlanta, georgia 30324 - phone (404) 873-2152

IF YOU DO GEORGIA...
CALL US FIRST!
UTILITIES PROTECTION CENTER
STATE WIDE
CALL 811
IT'S THE LAW!



SPURLOCK & ASSOCIATES, INC.
consulting engineers
2970 Clairmont Rd., Suite 620 | Atlanta, GA 30329
P: 404.633.0245 | F: 404.633.1736
SA JOB NO. 2163