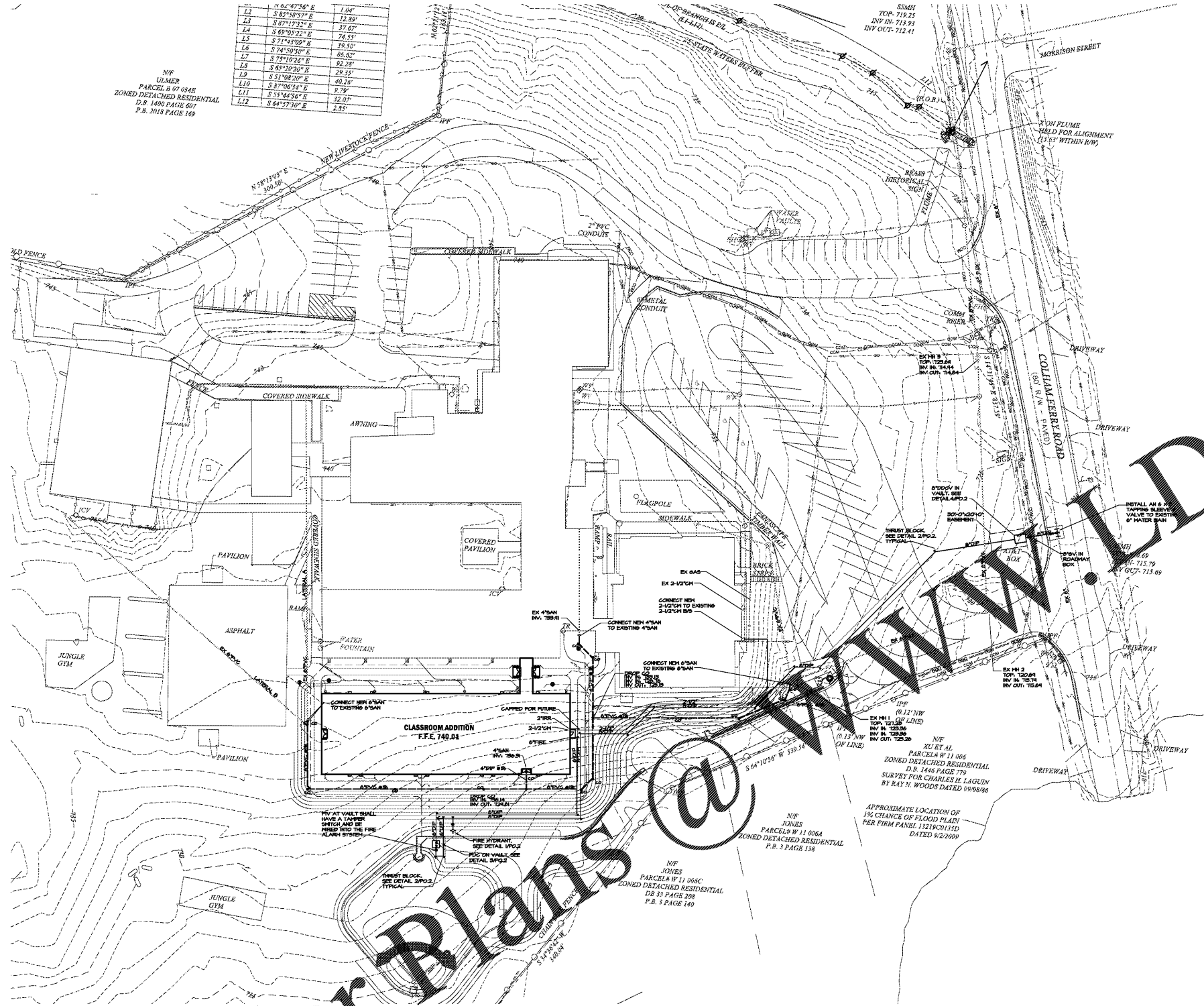


DRAWING ISSUE RECORD		
DATE	REVISIONS	NO.
4-8-2011	ISSUE TO BID	

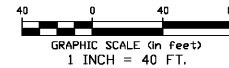
N/F
ULMER
PARCEL B 97 0345
ZONED DETACHED RESIDENTIAL
D.B. 1400 PAGE 607
P.B. 2018 PAGE 169

L2	N 62°47'36" E	1.04'
L3	S 85°58'57" E	12.80'
L4	S 87°17'33" E	37.67'
L5	S 89°03'21" E	74.55'
L6	S 71°30'00" E	16.50'
L7	S 74°50'00" E	22.50'
L8	S 83°20'20" E	22.50'
L9	S 51°08'20" E	40.10'
L10	S 3°08'54" E	8.75'
L11	S 55°44'34" E	32.07'
L12	S 64°37'30" E	1.85'



Order Plans @ www.DILine.com

1 SITE PLAN - PLUMBING
POL 1"=40'-0"



THE EXISTING UTILITIES SHOWN ON THIS PLAN WERE OBTAINED FROM VARIOUS UTILITY COMPANIES, VARIOUS GOVERNMENT AGENCIES, AND ABOVE GROUND OBSERVATION. THE SURVEYOR AND/OR ENGINEER MAKE NO CLAIM TO THE COMPLETENESS OF THIS INFORMATION. THE EXACT LOCATION OF ADDITIONAL UTILITIES MAY BE DISCOVERED UPON EXCAVATION. PRIOR TO BEGINNING ANY EXCAVATION ACTIVITIES, THE UTILITY PROTECTION SERVICE FOR THIS AREA MUST BE NOTIFIED.

IF YOU DO GEORGIA...
CALL US FIRST!
UTILITIES PROTECTION CENTER
STATE WIDE
CALL 811
IT'S THE LAW!



SPURLOCK & ASSOCIATES, INC.
consulting engineers
2970 Clairmont Rd., Suite 620 | Atlanta, GA 30329
P: 404.632.0245 | F: 404.632.1736
GA JOB NO. 2163

cunningham foehand matthews moore

ADDITION TO COLHAM FERRY
ELEMENTARY SCHOOL

191 COLHAM FERRY ROAD, MARIETTA, GA 30067
FOR THE BOARD OF EDUCATION
OCONEE COUNTY, GA
DDE FACILITY CODE 3530

cunningham, foehand, matthews & moore, architects, inc. - 2011 manchester street, n.e. - atlanta, georgia 30324 - phone (404) 873-2152

DATE: DECEMBER 15, 2010
JOB NO. B-L-5071-20
DRAWN BY: J.C.F.
CHECKED BY: M.W.D.

P0.1