

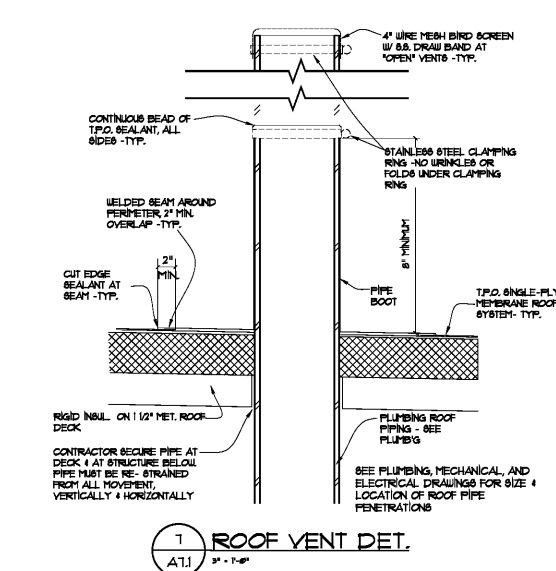
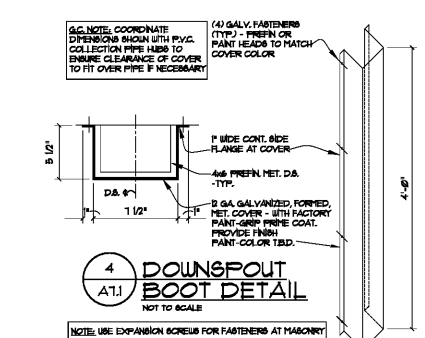
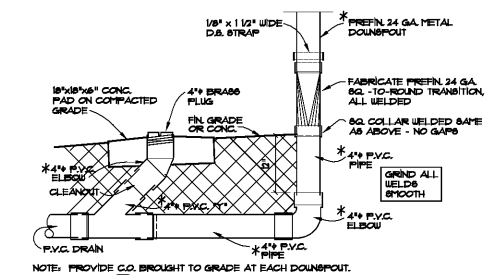
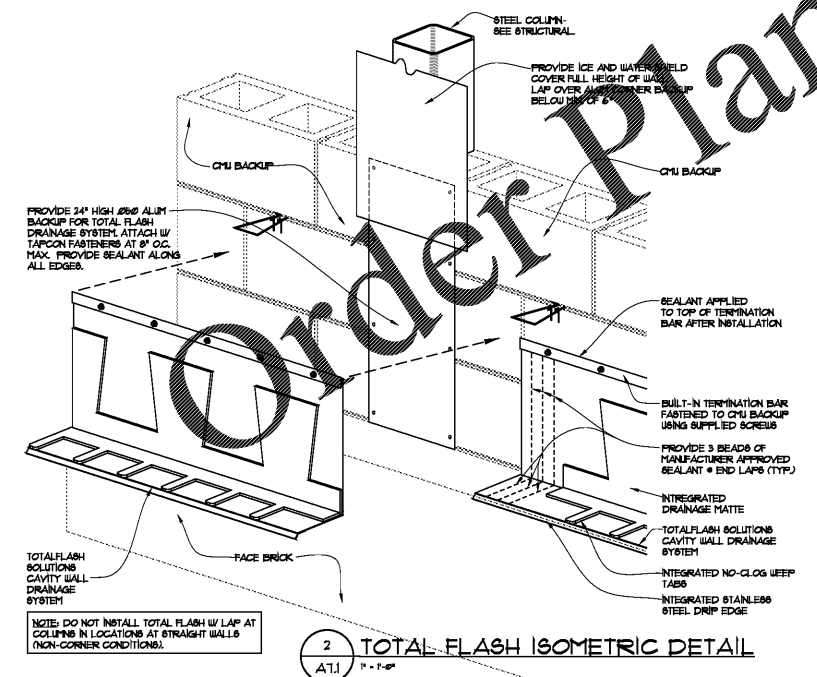
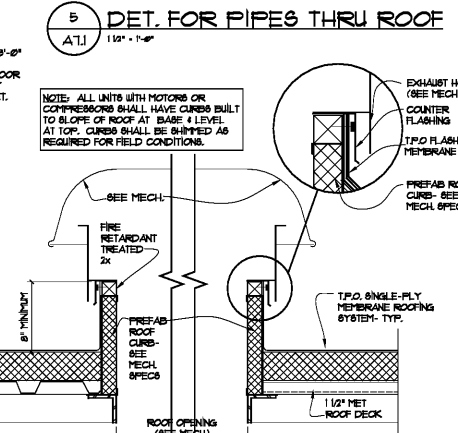
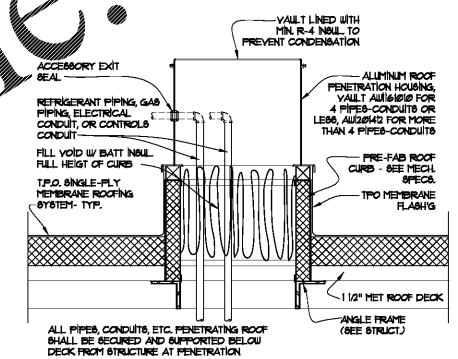
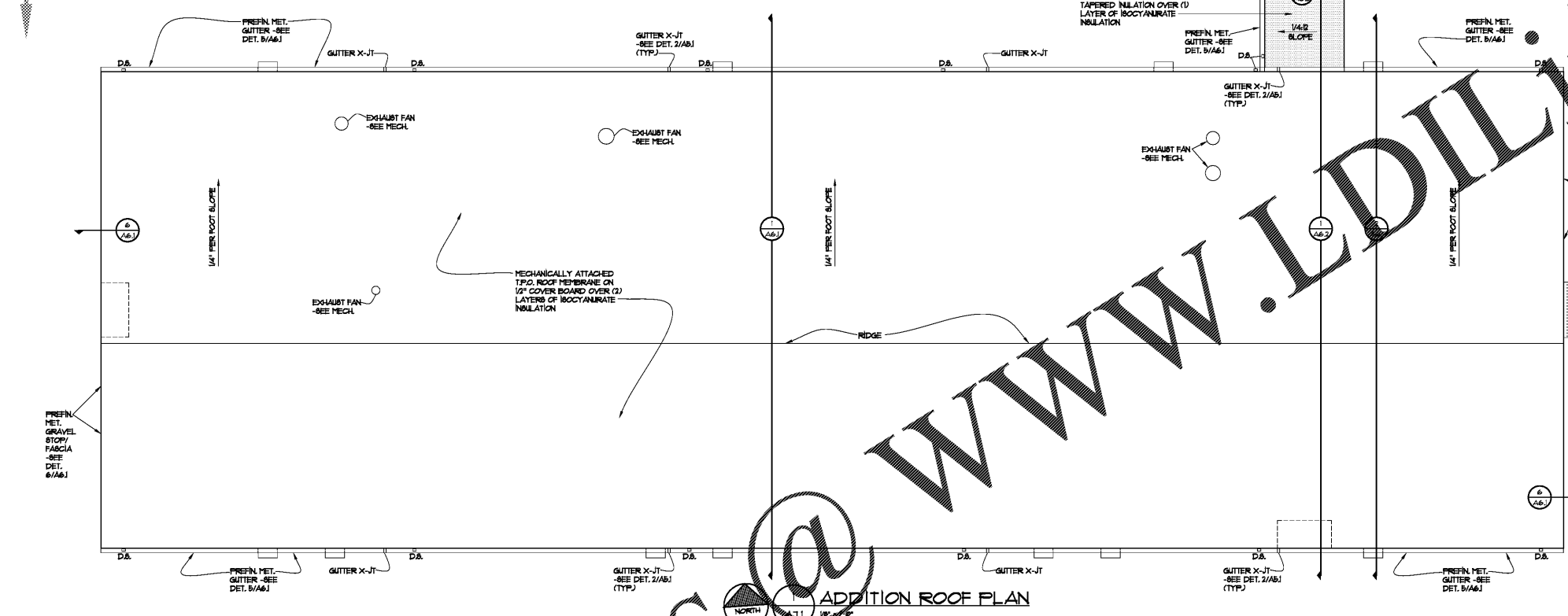
DRAWING ISSUE RECORD		
DATE	REVISIONS	NO.
4-6-2021	ISSUE TO BID	

- ROOF PLAN LEGEND**
- X-JT. - EXPANSION JOINT
 - B.B. - CONCRETE SPLASH BLOCK
 - D.B. - DOWNSPOUT AND LEADER
 - E.F. - ROOFTOP EXHAUST FAN (SEE MECH.)
 - C.U. - ROOFTOP CONDENSING UNIT (SEE MECH.)
 - H.P. - ROOFTOP HEAT PUMP (SEE MECH.)
 - V.T.R. - VENT TO ROOF (SEE PLUMBING)
 - - INDICATES AREA OF TAPERED INSULATION

- GENERAL NOTES:**
1. QUANTITIES AND LOCATIONS OF ROOF TOP MECHANICAL PLUMBING AND ELECTRICAL EQUIPMENT ARE APPROXIMATE. GEN. CONTRACTOR MUST COORDINATE EXACT ITEMS AS WELL AS SIZE AND LOCATIONS OF OPENINGS FOR STRUCTURAL SUPPORT AND ROOF PENETRATIONS. VERIFY CLEARANCES REQUIRED FOR ALL EQUIPMENT OPENINGS.
 2. CONTRACTOR TO PROVIDE POSITIVE DRAINAGE AROUND ALL ROOF TOP EQUIPMENT AS NECESSARY. PROVIDE CRICKETS AS REQUIRED.
 3. CONTRACTOR TO PROVIDE POSITIVE DRAINAGE TO ALL GUTTERS AND SLOIN.
 4. PITCH PANS ARE NOT ACCEPTABLE FOR ANY PENETRATION OF THE ROOF MEMBRANE. CONTRACTOR SHALL PROVIDE ROOF PENETRATION CURBS FOR ANY ITEMS PENETRATING ROOF.
 5. ALL ROOF PENETRATIONS (CURBS, VENTS, PIPES, ETC.) SHALL BE END AND A MINIMUM OF 8" ABOVE FINISHED ROOF TOP OF CURB OR VENT. CONTRACTOR COORDINATE WITH INSULATION DETAILS.
 6. DETAILS ARE KEPT ON ROOF PLAN AS AN ABSTRACT OF THE CONTRACTOR IN UNDERSTANDING THE ROOF WORK TO BE PERFORMED. DETAILS ARE KEPT TO SPECIFIC AREAS FOR CONVENIENCE. THEY MAY APPLY TO THE SAME GENERAL CONDITION WHEREVER THEY MAY BE FOUND.

ADDITION EXISTING

ADDITION EXISTING



ADDITION TO COLHAM FERRY ELEMENTARY SCHOOL
191 COLHAM FERRY ROAD, WATKINSVILLE, GA 30677
FOR THE BOARD OF EDUCATION
COOKEE COUNTY BOARD OF EDUCATION
DOE FACILITY CODE 3050

cunningham forehand matthews moore

cunningham, forehand, matthews & moore, architects, inc. - 2011 manchester street, n.e. - atlanta, georgia 30324 - phone (404) 873-2152

A7.1