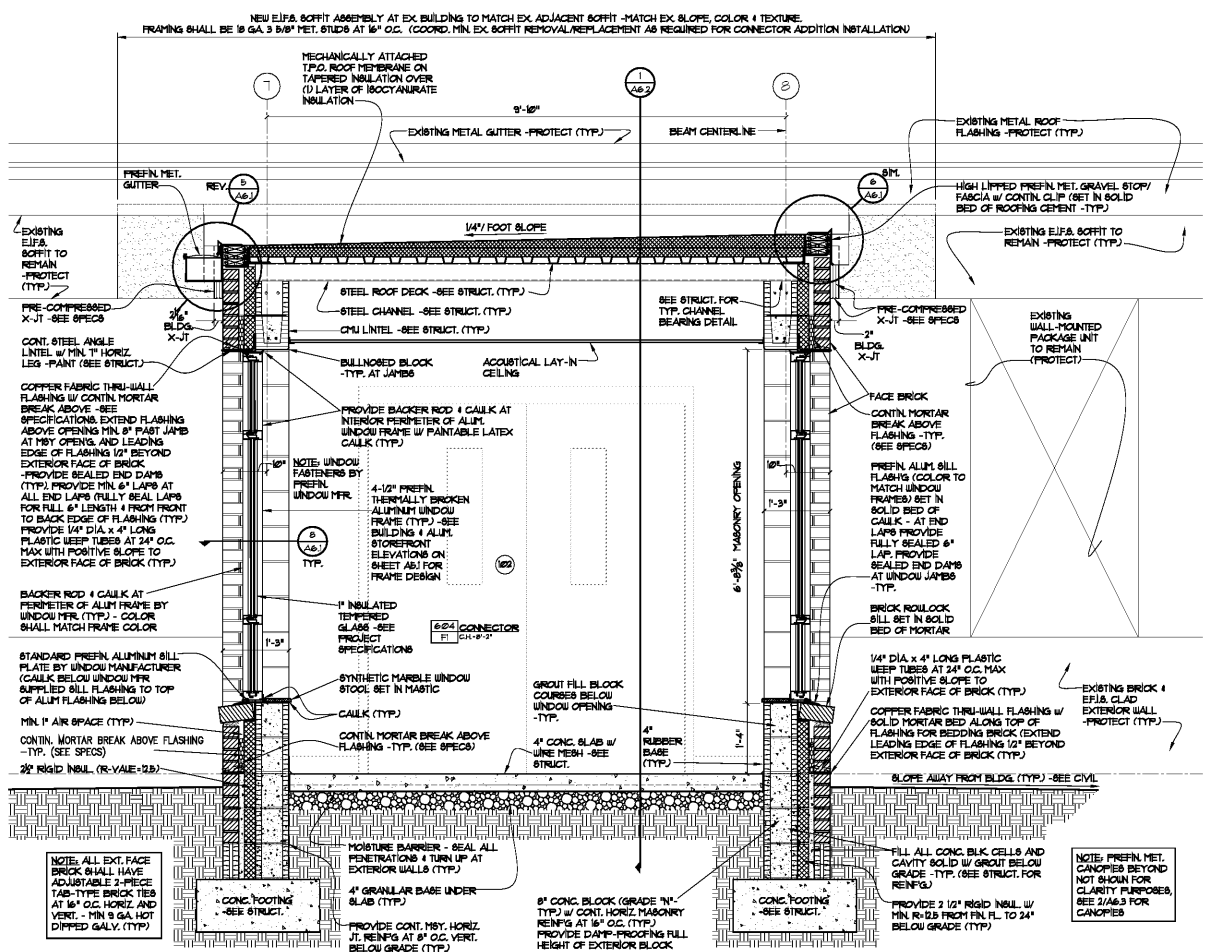
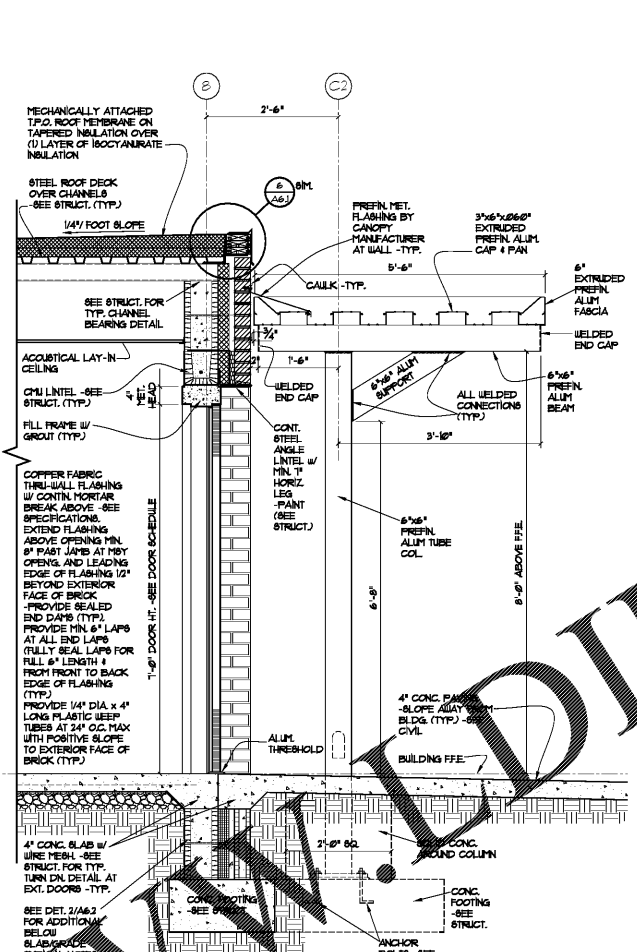


DRAWING ISSUE RECORD		
DATE	REVISION	NO.
4-6-2021	ISSUE TO BID	

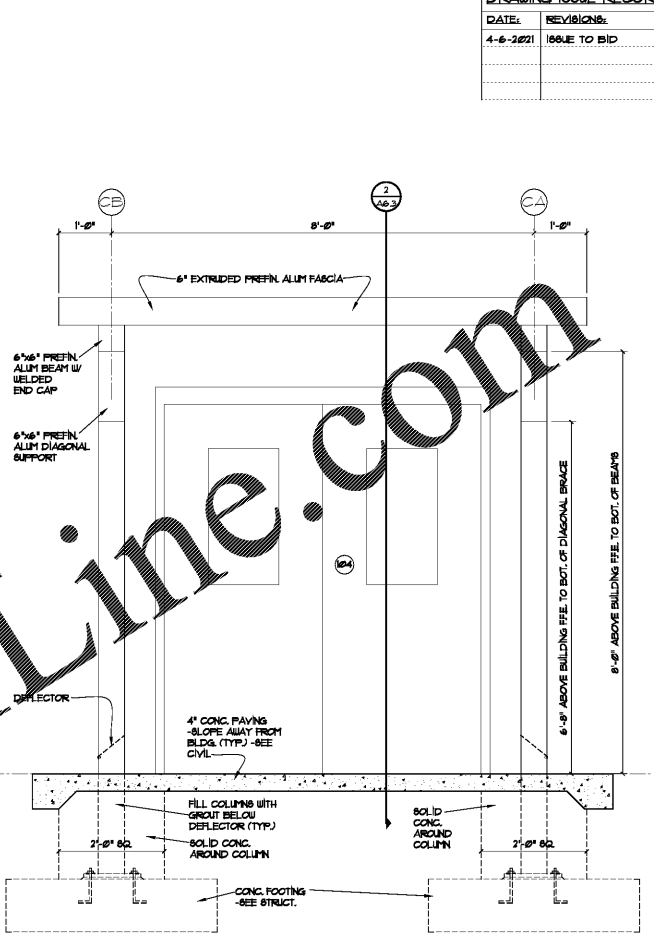
cunningham, forhand, matthews & moore
 architects, inc. - atlanta, georgia 30324 - phone (404) 873-2152
 DATE: DECEMBER 15, 2020 5:41:50 PM
 JOB NO. 2020-01-001-20
 DRAWN BY: MK
 CHECKED BY: [Signature]
 PROJECT: ADDITION TO COLHAM FERRY ELEMENTARY SCHOOL
 191 COLHAM FERRY ROAD, WATKINSVILLE, GA 30677
 FOR THE: COOK COUNTY BOARD OF EDUCATION
 COOK COUNTY FACILITY CODE 3050



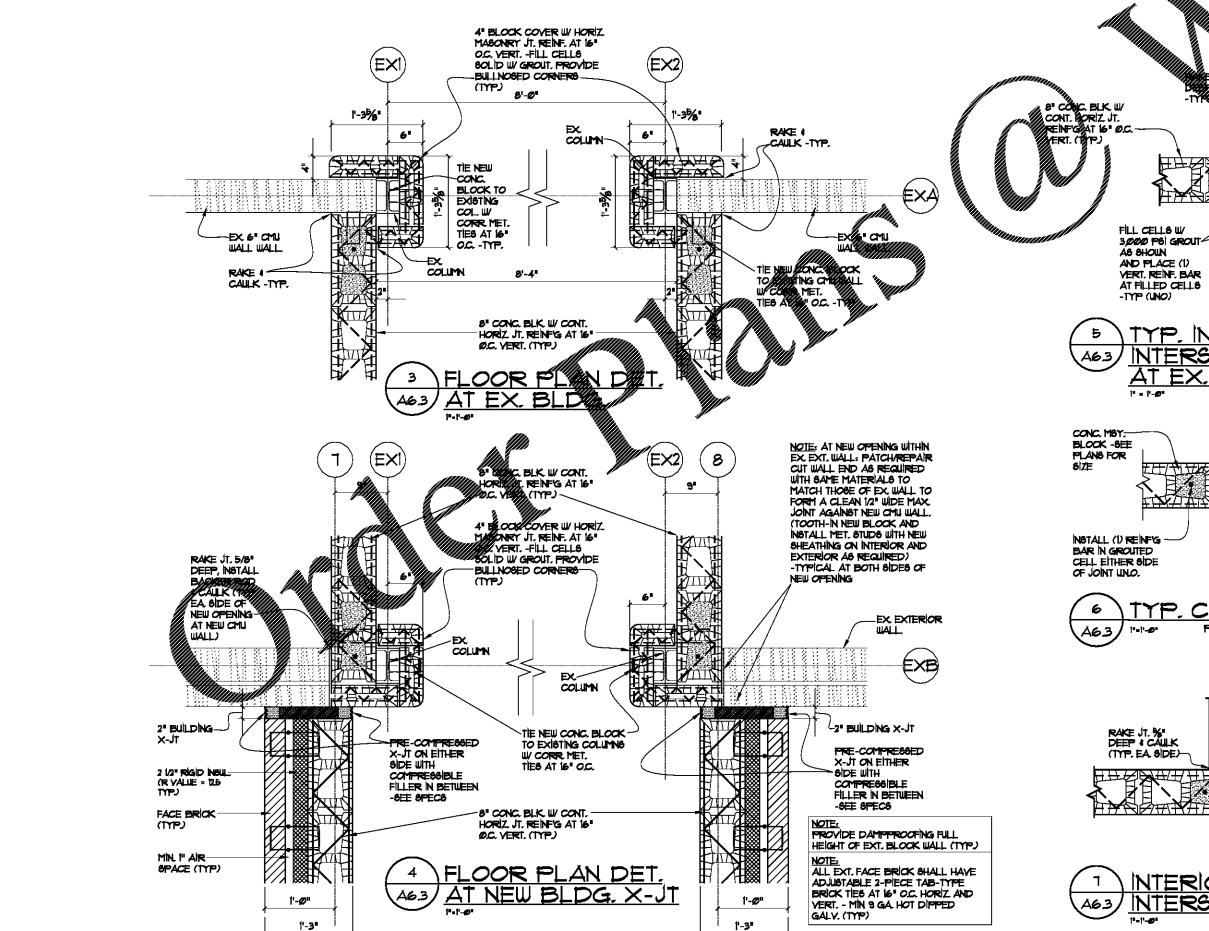
1 CROSS SECTION AT NEW CONNECTOR
A6.3 1/4" = 1'-0"



2 CANOPY SECTION AT DOOR #104
A6.3 1/4" = 1'-0"

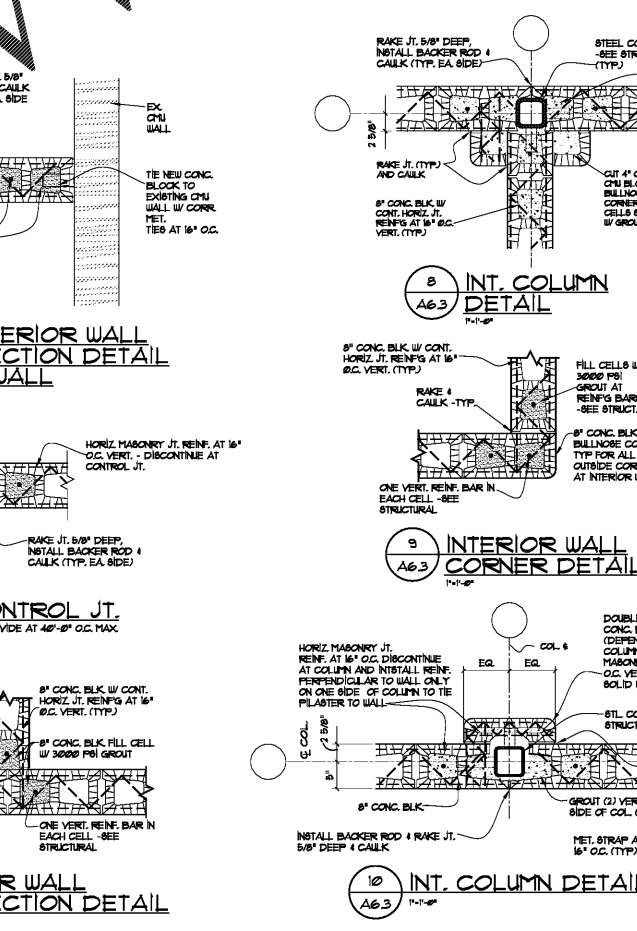


3 CANOPY ELEVATION AT DOOR #104
A6.3 3/8" = 1'-0"



3 FLOOR PLAN DET. AT EX. BLDG. 1/4" = 1'-0"

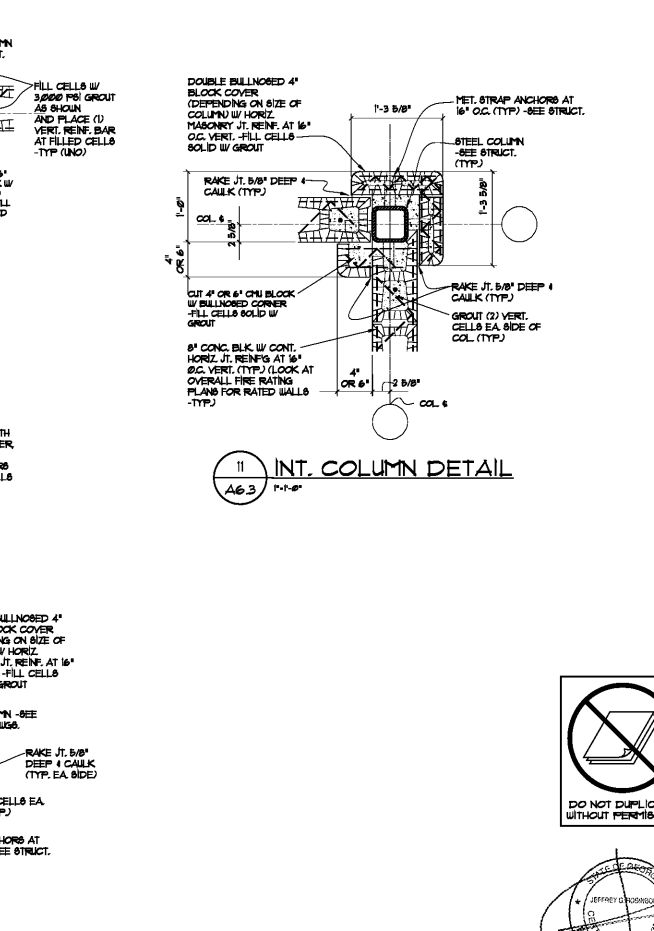
4 FLOOR PLAN DET. AT NEW BLDG. X-JT 1/4" = 1'-0"



5 TYP. INTERIOR WALL INTERSECTION DETAIL AT EX. WALL 1/4" = 1'-0"

6 TYP. CONTROL JT. PROVIDE AT 40'-0" O.C. MAX 1/4" = 1'-0"

7 INTERIOR WALL INTERSECTION DETAIL 1/4" = 1'-0"



8 INT. COLUMN DETAIL 1/4" = 1'-0"

9 INTERIOR WALL CORNER DETAIL 1/4" = 1'-0"

10 INT. COLUMN DETAIL 1/4" = 1'-0"



DO NOT DUPLICATE WITHOUT PERMISSION

