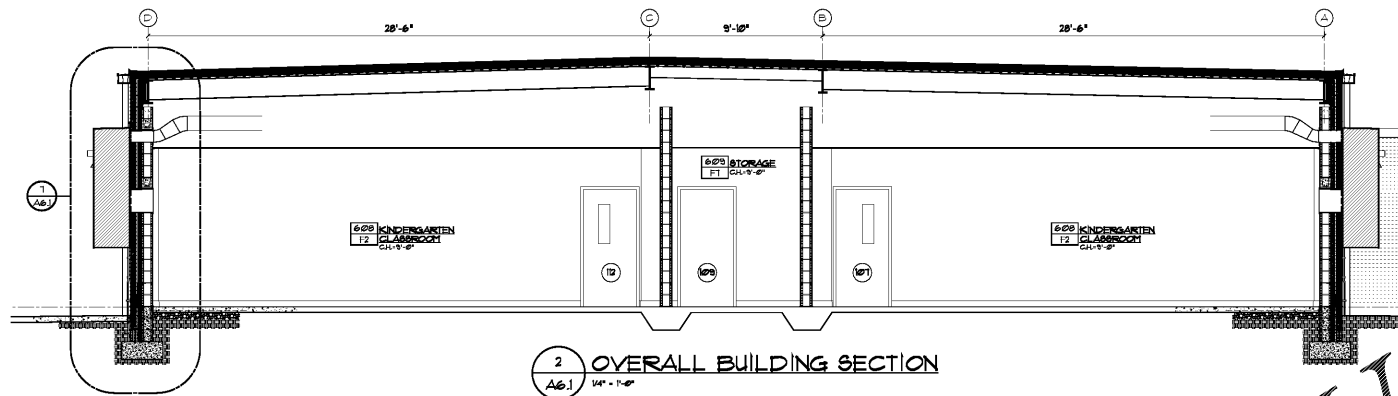
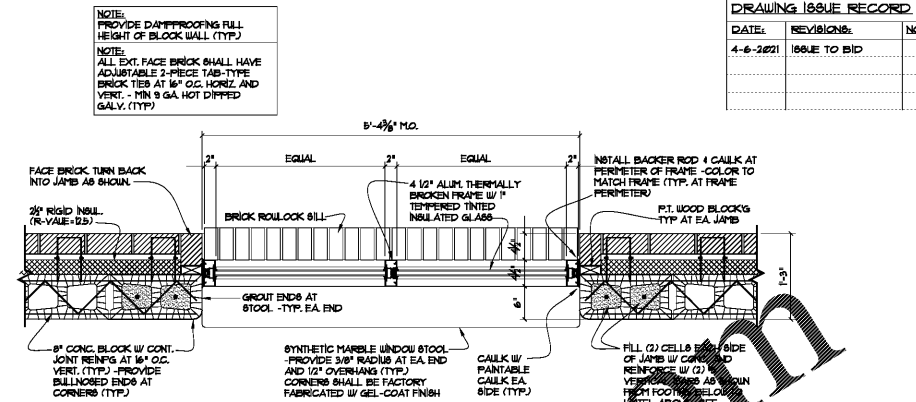


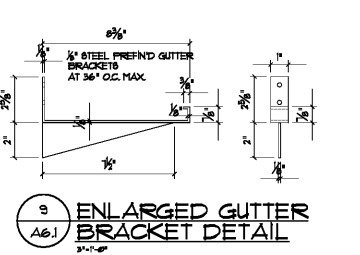
1 OVERALL BUILDING SECTION  
A6.1 1/4" = 1'-0"



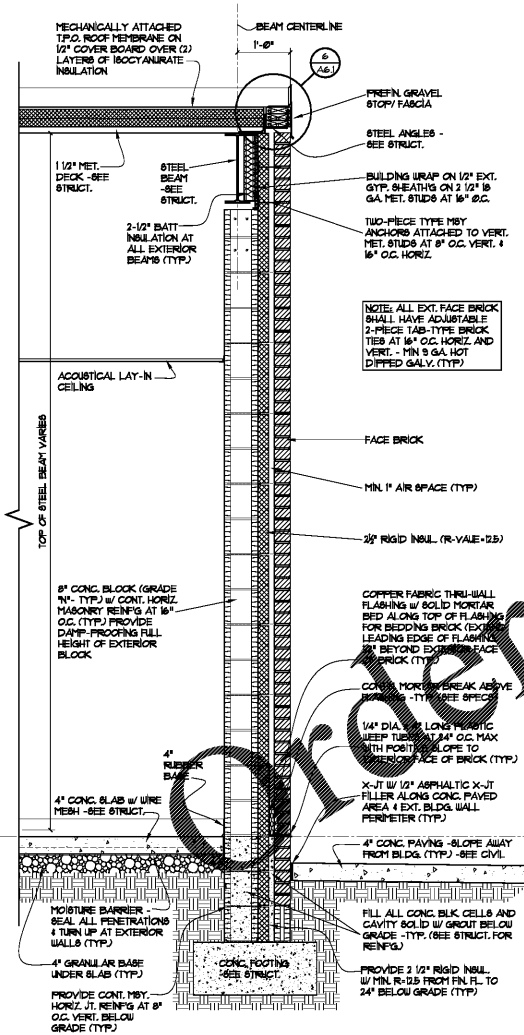
2 OVERALL BUILDING SECTION  
A6.1 1/4" = 1'-0"



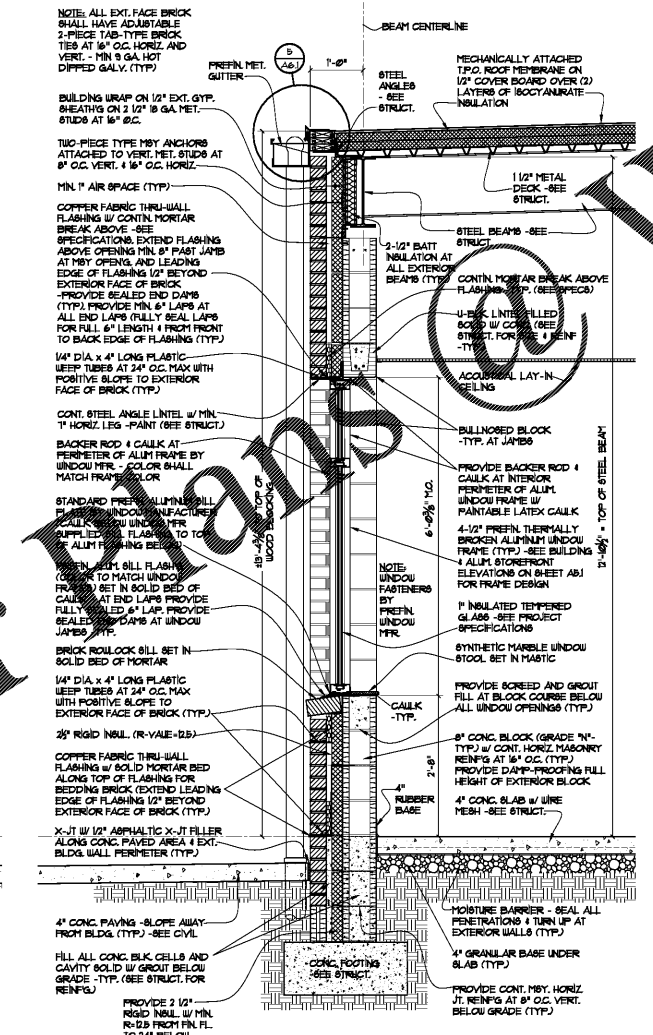
8 TYPICAL WINDOW 'A' & 'B' JAMB PLAN DETAIL  
A6.1 1/4" = 1'-0" NOTE: SEE A6.1 FOR WINDOW FRAME ELEVATIONS



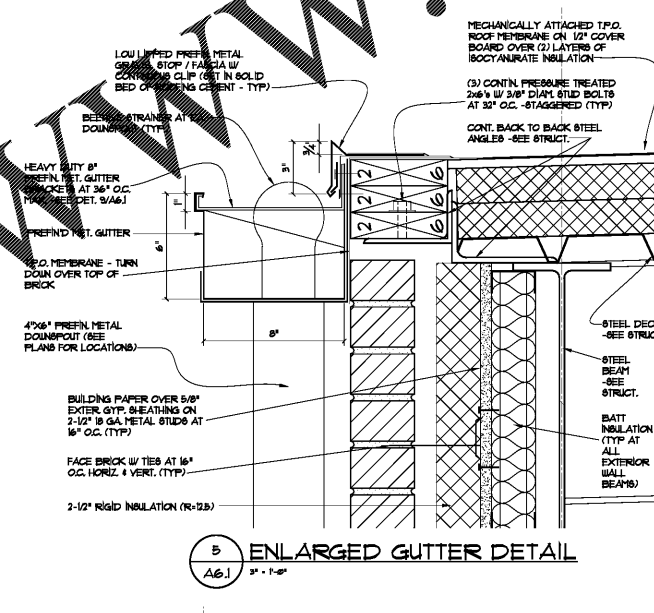
9 ENLARGED GUTTER BRACKET DETAIL  
A6.1 3/4" = 1'-0"



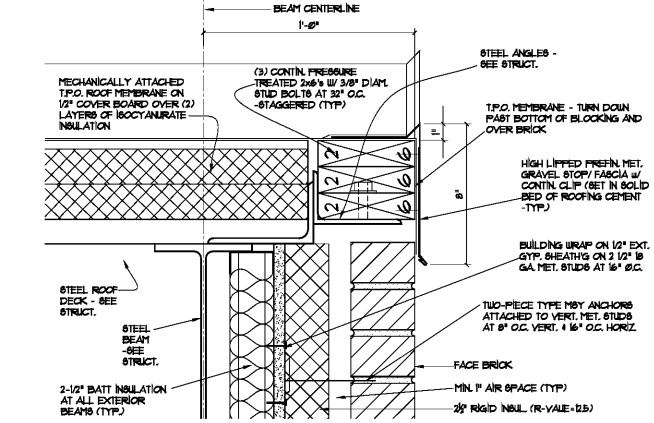
3 TYP. WALL SECTION  
A6.1 3/4" = 1'-0"



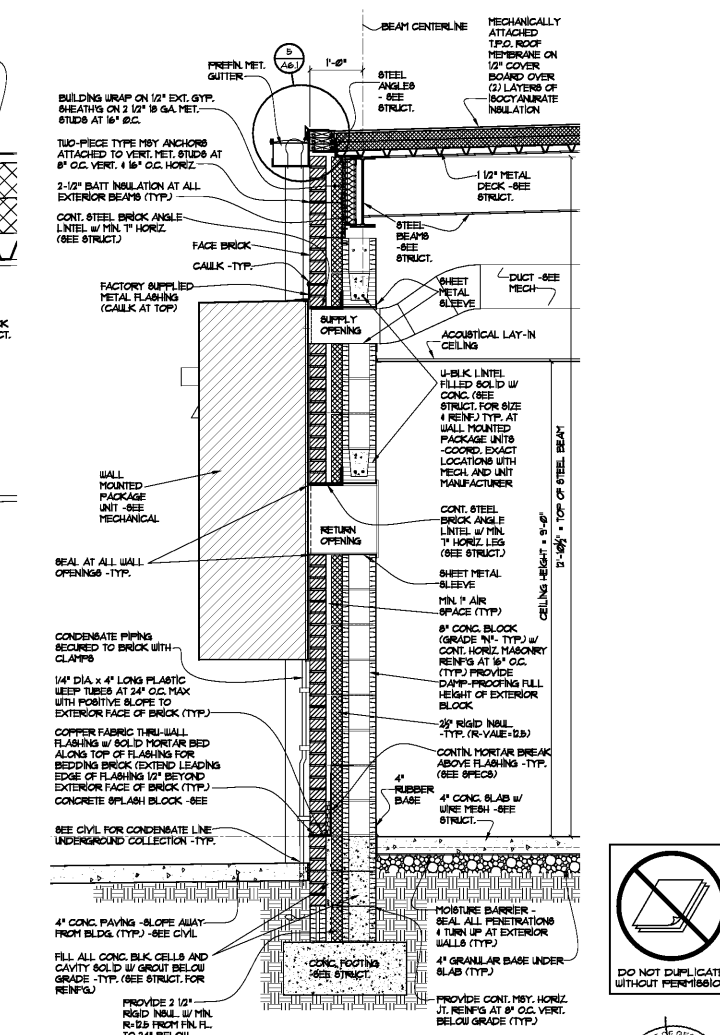
4 TYP. WALL SECTION  
A6.1 3/4" = 1'-0"



5 ENLARGED GUTTER DETAIL  
A6.1 3/4" = 1'-0"



6 ENLARGED ROOF EDGE DETAIL  
A6.1 3/4" = 1'-0"



7 TYPICAL WALL SECTION AT HVAC PACKAGE UNITS  
A6.1 3/4" = 1'-0"

DRAWING ISSUE RECORD		
DATE	REVISION	NO.
4-6-2021	ISSUE TO BID	

ADDITION TO COLHAM FERRY  
ELEMENTARY SCHOOL  
191 COLHAM FERRY ROAD, WATKINSVILLE, GA 30677  
FOR THE  
GOOGLE COUNTY BOARD OF EDUCATION  
DOE FACILITY CODE 3050

cunningham, forehand, matthews & moore, architects, inc. - 2011 manchester street, n.e. - atlanta, georgia 30324 - phone (404) 873-2152