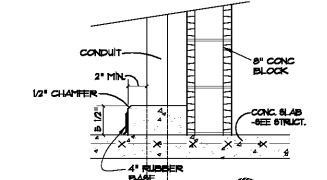


DATE	REVISIONS	NO.
4-6-2021	ISSUE TO BID	

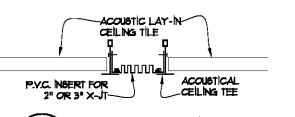


NO.	FLOOR	BASE	WALL	CEILING	REMARKS
F0	EFFR.	EFFR.	EFFR.	EFFR.	
F1	VCT.	4\"/>			

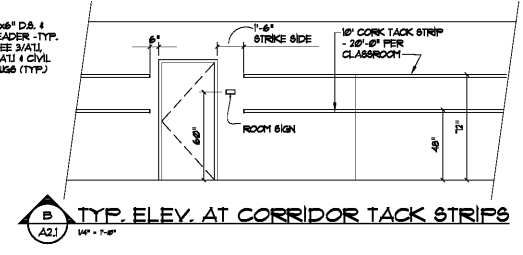
**CLG. TYPES**  
TYPE I - STANDARD FRAMED NTC 30 (SEE SPEC)  
TYPE II - STANDARD FRAMED NTC 30 (SEE SPEC)

**FINISH SCHEDULE LEGEND**  
VCT. - VINYL COMPOSITION TILE  
MR. - MOISTURE RESISTANT  
CL. OR CER. T. - CERAMIC TILE

- FINISH SCHEDULE NOTES:**  
NOTES ARE REFERENCED TO SPECIFIC AREAS FOR CONFORMANCE, BUT MAY APPLY TO THE SAME GENERAL CONDITION UNLESS NOTED OTHERWISE. THESE NOTES APPLY TO ALL DRAWINGS.
- DEPRESS FLOOR SLABS 1 1/2\"/>

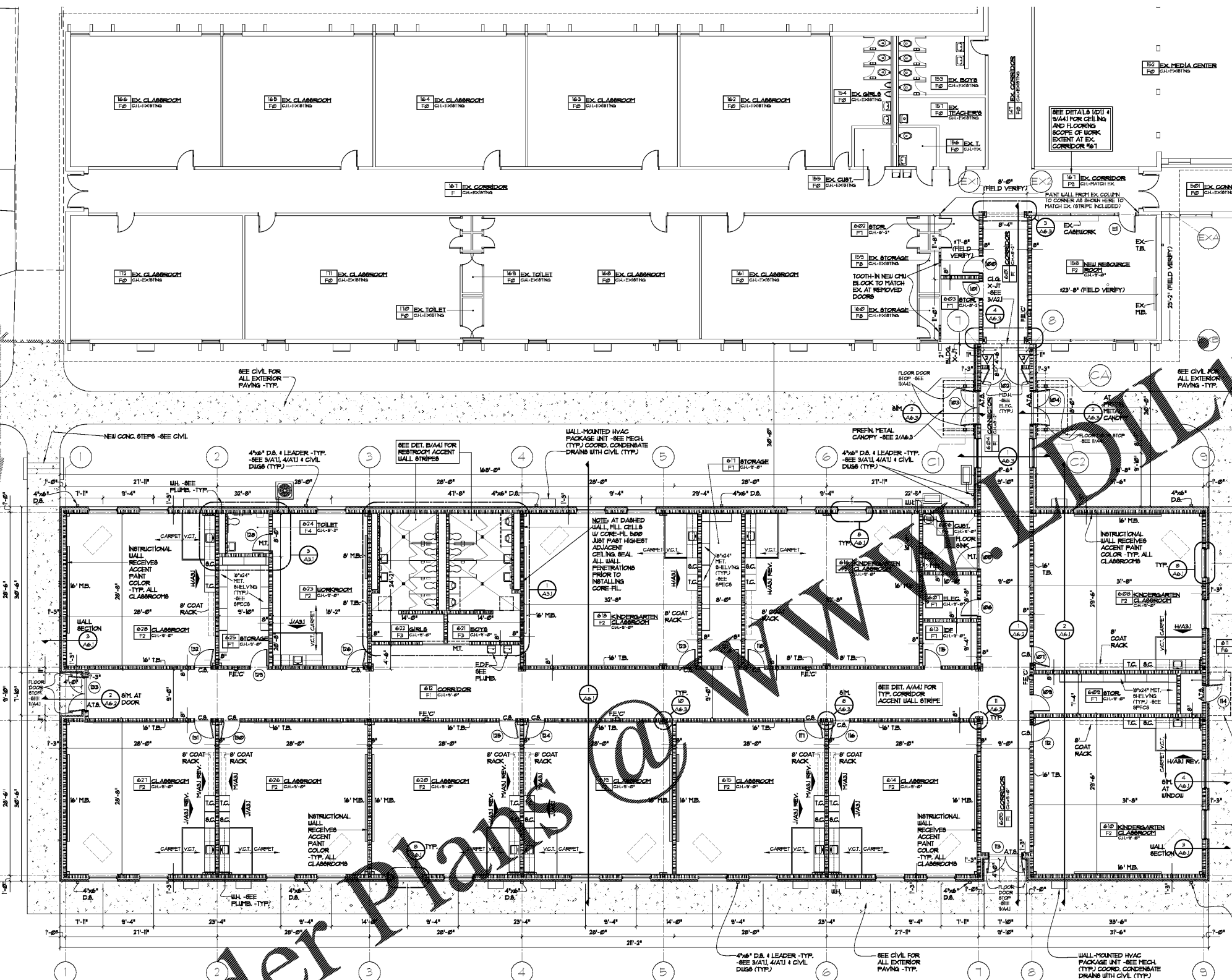


3 CLG. X-JT  
3\"/>

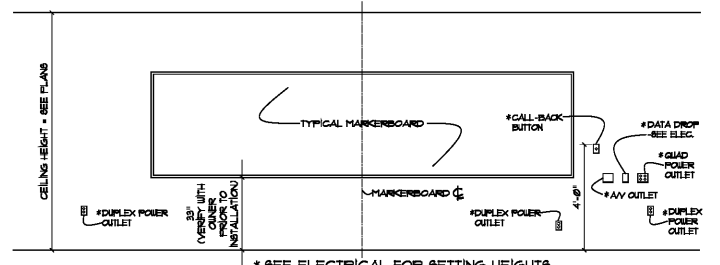


4 TYP. ELEV. AT CORRIDOR TACK STRIPS  
1/2\"/>

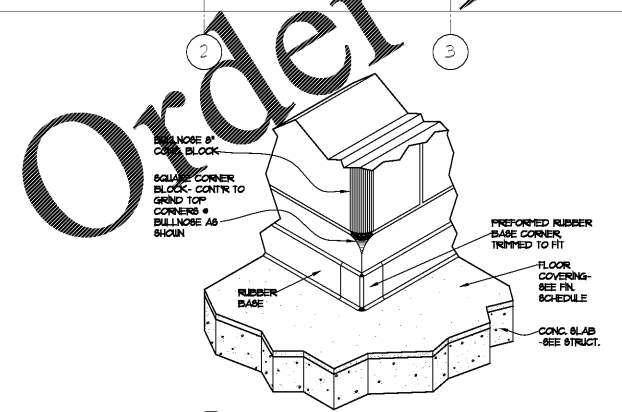
- LEGEND**
- BRICK VENEER W/ CONC. BLOCK & 2 1/2\"/>
  - CONC. BLOCK
  - CONCRETE PAVING
  - CLP CONCRETE (RETAINING WALL)
  - ACOUNT. FILL CELL WALL
  - AL. - ALUMINUM THRESHOLD
  - ATA - ALUMINUM TRANSITION STRIP
  - CB. - CHALKBOARD
  - CH. - CEILING HEIGHT
  - CJ. - CONTROL JOINT
  - CT. - CERAMIC TILE
  - CA. - CARPET STRIP
  - D.B. - DOWN SPOUT
  - D.G. - DOUBLE GLAZING
  - D.B.N. - ROOF OVERFLOW NOZZLE
  - ED.F. - ELEC. DRINKING FOUNTAIN
  - EP. - ELECTRICAL PANEL
  - FD. - FLOOR DRAIN
  - HR. - HANDRAIL
  - WH. - WATER HEATER
  - L.V.T. - LUXURY VINYL TILE
  - MB. - MARKERBOARD
  - M.B.A. - MOP BASIN
  - MD.H. - MAGNETIC DOOR HOLDER
  - M.B. - MOP STRIP
  - MT. - MARBLE THRESHOLD
  - N.C. - NOT IN CONTRACT
  - P.A. - PROJECTION SCREEN
  - P.T.D. - PAPER TOWEL DISPENSER
  - RL. - RAIN LEADER
  - T.B. - TACKBOARD
  - T.B.U. - TELEPHONE BACKBOARD
  - T.H. - TOILET TISSUE HOLDER
  - T.W. - TACTILE WARNING STRIP
  - V.B. - VENETIAN BLINDS
  - W.H. - WATER HEATER
  - WH. - WALL HYDRANT
  - XJ. - EXPANSION JOINT
  - FLEX. - FINE EXT. # CABINET
  - F.E.B. - FINE EXT. # BRACKET
  - F.E.B. - WALL MOUNTED MAGNETIC DOOR HOLDER
  - 202 - DOOR NUMBER
  - 2222 - ROOM NUMBER
  - F2 - FINISH NUMBER
  - 1 - ONE HOUR RATED WALL
  - 2 - TWO HOUR RATED WALL
  - DO NOT DUPLICATE WITHOUT PERMISSION



1 ENLARGED ADDITION PLAN  
1/2\"/>



5 TYPICAL MARKER BOARD ELEVATION  
1/2\"/>



6 TYP. DET. AT EXT. CONC. BLOCK CORNERS AND RUBBER BASE  
1/2\"/>

**Order Plans**

ADDITION

1  
2  
3  
4  
5  
6  
7  
8  
9

A  
B  
C  
D

1  
2  
3  
4  
5  
6  
7  
8  
9

A  
B  
C  
D

1  
2  
3  
4  
5  
6  
7  
8  
9

SEE CIVIL FOR ALL EXTERIOR PAVING - TYP.

NEW CONC. STEPS - SEE CIVIL

4\"/>

SEE DET. A/A41 FOR RESTROOM ACCENT WALL STRIPES

WALL MOUNTED HVAC PACKAGE UNIT - SEE MECH (TYP.) COORD. CONDENSATE DRAINS WITH CIVIL (TYP.)

NOTE: AT DASHED WALL, FILL CELLS W/ CORE-FIL. BBS JUST PAST HIGHEST ADJACENT CEILING SEAL. ALL WALL PENETRATIONS PRIOR TO INSTALLING CORE-FIL.

PREFN. METAL CANOPY - SEE 2/A6.3

4\"/>

SEE DET. A/A41 FOR TYP. CORRIDOR ACCENT WALL STRIPES

SEE CIVIL FOR ALL EXTERIOR PAVING - TYP.

SEE CIVIL FOR ALL EXTERIOR PAVING - TYP.

NEW CONC. STEPS - SEE CIVIL

4\"/>

SEE DET. A/A41 FOR RESTROOM ACCENT WALL STRIPES

WALL MOUNTED HVAC PACKAGE UNIT - SEE MECH (TYP.) COORD. CONDENSATE DRAINS WITH CIVIL (TYP.)

NOTE: AT DASHED WALL, FILL CELLS W/ CORE-FIL. BBS JUST PAST HIGHEST ADJACENT CEILING SEAL. ALL WALL PENETRATIONS PRIOR TO INSTALLING CORE-FIL.

PREFN. METAL CANOPY - SEE 2/A6.3

4\"/>

SEE DET. A/A41 FOR TYP. CORRIDOR ACCENT WALL STRIPES

SEE CIVIL FOR ALL EXTERIOR PAVING - TYP.

SEE CIVIL FOR ALL EXTERIOR PAVING - TYP.

NEW CONC. STEPS - SEE CIVIL

4\"/>

SEE DET. A/A41 FOR RESTROOM ACCENT WALL STRIPES

WALL MOUNTED HVAC PACKAGE UNIT - SEE MECH (TYP.) COORD. CONDENSATE DRAINS WITH CIVIL (TYP.)

NOTE: AT DASHED WALL, FILL CELLS W/ CORE-FIL. BBS JUST PAST HIGHEST ADJACENT CEILING SEAL. ALL WALL PENETRATIONS PRIOR TO INSTALLING CORE-FIL.

PREFN. METAL CANOPY - SEE 2/A6.3

4\"/>

SEE DET. A/A41 FOR TYP. CORRIDOR ACCENT WALL STRIPES

SEE CIVIL FOR ALL EXTERIOR PAVING - TYP.

SEE CIVIL FOR ALL EXTERIOR PAVING - TYP.

NEW CONC. STEPS - SEE CIVIL

4\"/>

SEE DET. A/A41 FOR RESTROOM ACCENT WALL STRIPES

WALL MOUNTED HVAC PACKAGE UNIT - SEE MECH (TYP.) COORD. CONDENSATE DRAINS WITH CIVIL (TYP.)

NOTE: AT DASHED WALL, FILL CELLS W/ CORE-FIL. BBS JUST PAST HIGHEST ADJACENT CEILING SEAL. ALL WALL PENETRATIONS PRIOR TO INSTALLING CORE-FIL.

PREFN. METAL CANOPY - SEE 2/A6.3

4\"/>

SEE DET. A/A41 FOR TYP. CORRIDOR ACCENT WALL STRIPES

SEE CIVIL FOR ALL EXTERIOR PAVING - TYP.

SEE CIVIL FOR ALL EXTERIOR PAVING - TYP.

NEW CONC. STEPS - SEE CIVIL

4\"/>

SEE DET. A/A41 FOR RESTROOM ACCENT WALL STRIPES

WALL MOUNTED HVAC PACKAGE UNIT - SEE MECH (TYP.) COORD. CONDENSATE DRAINS WITH CIVIL (TYP.)

NOTE: AT DASHED WALL, FILL CELLS W/ CORE-FIL. BBS JUST PAST HIGHEST ADJACENT CEILING SEAL. ALL WALL PENETRATIONS PRIOR TO INSTALLING CORE-FIL.

PREFN. METAL CANOPY - SEE 2/A6.3

4\"/>

SEE DET. A/A41 FOR TYP. CORRIDOR ACCENT WALL STRIPES

SEE CIVIL FOR ALL EXTERIOR PAVING - TYP.

SEE CIVIL FOR ALL EXTERIOR PAVING - TYP.

NEW CONC. STEPS - SEE CIVIL

4\"/>

SEE DET. A/A41 FOR RESTROOM ACCENT WALL STRIPES

WALL MOUNTED HVAC PACKAGE UNIT - SEE MECH (TYP.) COORD. CONDENSATE DRAINS WITH CIVIL (TYP.)

NOTE: AT DASHED WALL, FILL CELLS W/ CORE-FIL. BBS JUST PAST HIGHEST ADJACENT CEILING SEAL. ALL WALL PENETRATIONS PRIOR TO INSTALLING CORE-FIL.

PREFN. METAL CANOPY - SEE 2/A6.3

4\"/>

SEE DET. A/A41 FOR TYP. CORRIDOR ACCENT WALL STRIPES

SEE CIVIL FOR ALL EXTERIOR PAVING - TYP.

SEE CIVIL FOR ALL EXTERIOR PAVING - TYP.

NEW CONC. STEPS - SEE CIVIL

4\"/>

SEE DET. A/A41 FOR RESTROOM ACCENT WALL STRIPES

WALL MOUNTED HVAC PACKAGE UNIT - SEE MECH (TYP.) COORD. CONDENSATE DRAINS WITH CIVIL (TYP.)

NOTE: AT DASHED WALL, FILL CELLS W/ CORE-FIL. BBS JUST PAST HIGHEST ADJACENT CEILING SEAL. ALL WALL PENETRATIONS PRIOR TO INSTALLING CORE-FIL.

PREFN. METAL CANOPY - SEE 2/A6.3

4\"/>

SEE DET. A/A41 FOR TYP. CORRIDOR ACCENT WALL STRIPES

SEE CIVIL FOR ALL EXTERIOR PAVING - TYP.

SEE CIVIL FOR ALL EXTERIOR PAVING - TYP.

NEW CONC. STEPS - SEE CIVIL

4\"/>

SEE DET. A/A41 FOR RESTROOM ACCENT WALL STRIPES

WALL MOUNTED HVAC PACKAGE UNIT - SEE MECH (TYP.) COORD. CONDENSATE DRAINS WITH CIVIL (TYP.)

NOTE: AT DASHED WALL, FILL CELLS W/ CORE-FIL. BBS JUST PAST HIGHEST ADJACENT CEILING SEAL. ALL WALL PENETRATIONS PRIOR TO INSTALLING CORE-FIL.

PREFN. METAL CANOPY - SEE 2/A6.3

4\"/>

SEE DET. A/A41 FOR TYP. CORRIDOR ACCENT WALL STRIPES

SEE CIVIL FOR ALL EXTERIOR PAVING - TYP.

SEE CIVIL FOR ALL EXTERIOR PAVING - TYP.

NEW CONC. STEPS - SEE CIVIL

4\"/>

SEE DET. A/A41 FOR RESTROOM ACCENT WALL STRIPES

WALL MOUNTED HVAC PACKAGE UNIT - SEE MECH (TYP.) COORD. CONDENSATE DRAINS WITH CIVIL (TYP.)

NOTE: AT DASHED WALL, FILL CELLS W/ CORE-FIL. BBS JUST PAST HIGHEST ADJACENT CEILING SEAL. ALL WALL PENETRATIONS PRIOR TO INSTALLING CORE-FIL.

PREFN. METAL CANOPY - SEE 2/A6.3

4\"/>

SEE DET. A/A41 FOR TYP. CORRIDOR ACCENT WALL STRIPES

SEE CIVIL FOR ALL EXTERIOR PAVING - TYP.

SEE CIVIL FOR ALL EXTERIOR PAVING - TYP.

NEW CONC. STEPS - SEE CIVIL

4\"/>

SEE DET. A/A41 FOR RESTROOM ACCENT WALL STRIPES

WALL MOUNTED HVAC PACKAGE UNIT - SEE MECH (TYP.) COORD. CONDENSATE DRAINS WITH CIVIL (TYP.)

NOTE: AT DASHED WALL, FILL CELLS W/ CORE-FIL. BBS JUST PAST HIGHEST ADJACENT CEILING SEAL. ALL WALL PENETRATIONS PRIOR TO INSTALLING CORE-FIL.

PREFN. METAL CANOPY - SEE 2/A6.3

4\"/>

SEE DET. A/A41 FOR TYP. CORRIDOR ACCENT WALL STRIPES

SEE CIVIL FOR ALL EXTERIOR PAVING - TYP.

SEE CIVIL FOR ALL EXTERIOR PAVING - TYP.

NEW CONC. STEPS - SEE CIVIL

4\"/>

SEE DET. A/A41 FOR RESTROOM ACCENT WALL STRIPES

WALL MOUNTED HVAC PACKAGE UNIT - SEE MECH (TYP.) COORD. CONDENSATE DRAINS WITH CIVIL (TYP.)

NOTE: AT DASHED WALL, FILL CELLS W/ CORE-FIL. BBS JUST PAST HIGHEST ADJACENT CEILING SEAL. ALL WALL PENETRATIONS PRIOR TO INSTALLING CORE-FIL.

PREFN. METAL CANOPY - SEE 2/A6.3

4\"/>

SEE DET. A/A41 FOR TYP. CORRIDOR ACCENT WALL STRIPES

SEE CIVIL FOR ALL EXTERIOR PAVING - TYP.

SEE CIVIL FOR ALL EXTERIOR PAVING - TYP.

NEW CONC. STEPS - SEE CIVIL

4\"/>

SEE DET. A/A41 FOR RESTROOM ACCENT WALL STRIPES

WALL MOUNTED HVAC PACKAGE UNIT - SEE MECH (TYP.) COORD. CONDENSATE DRAINS WITH CIVIL (TYP.)

NOTE: AT DASHED WALL, FILL CELLS W/ CORE-FIL. BBS JUST PAST HIGHEST ADJACENT CEILING SEAL. ALL WALL PENETRATIONS PRIOR TO INSTALLING CORE-FIL.

PREFN. METAL CANOPY - SEE 2/A6.3

4\"/>

SEE DET. A/A41 FOR TYP. CORRIDOR ACCENT WALL STRIPES

SEE CIVIL FOR ALL EXTERIOR PAVING - TYP.

SEE CIVIL FOR ALL EXTERIOR PAVING - TYP.

NEW CONC. STEPS - SEE CIVIL

4\"/>

SEE DET. A/A41 FOR RESTROOM ACCENT WALL STRIPES

WALL MOUNTED HVAC PACKAGE UNIT - SEE MECH (TYP.) COORD. CONDENSATE DRAINS WITH CIVIL (TYP.)

NOTE: AT DASHED WALL, FILL CELLS W/ CORE-FIL. BBS JUST PAST HIGHEST ADJACENT CEILING SEAL. ALL WALL PENETRATIONS PRIOR TO INSTALLING CORE-FIL.

PREFN. METAL CANOPY - SEE 2/A6.3

4\"/>

SEE DET. A/A41 FOR TYP. CORRIDOR ACCENT WALL STRIPES

SEE CIVIL FOR ALL EXTERIOR PAVING - TYP.

SEE CIVIL FOR ALL EXTERIOR PAVING - TYP.

NEW CONC. STEPS - SEE CIVIL

4\"/>

SEE DET. A/A41 FOR RESTROOM ACCENT WALL STRIPES

WALL MOUNTED HVAC PACKAGE UNIT - SEE MECH (TYP.) COORD. CONDENSATE DRAINS WITH CIVIL (TYP.)

NOTE: AT DASHED WALL, FILL CELLS W/ CORE-FIL. BBS JUST PAST HIGHEST ADJACENT CEILING SEAL. ALL WALL PENETRATIONS PRIOR TO INSTALLING CORE-FIL.

PREFN. METAL CANOPY - SEE 2/A6.3

4\"/>

SEE DET. A/A41 FOR TYP. CORRIDOR ACCENT WALL STRIPES

SEE CIVIL FOR ALL EXTERIOR PAVING - TYP.

SEE CIVIL FOR ALL EXTERIOR PAVING - TYP.

NEW CONC. STEPS - SEE CIVIL

4\"/>

SEE DET. A/A41 FOR RESTROOM ACCENT WALL STRIPES

WALL MOUNTED HVAC PACKAGE UNIT - SEE MECH (TYP.) COORD. CONDENSATE DRAINS WITH CIVIL (TYP.)

NOTE: AT DASHED WALL, FILL CELLS W/ CORE-FIL. BBS JUST PAST HIGHEST ADJACENT CEILING SEAL. ALL WALL PENETRATIONS PRIOR TO INSTALLING CORE-FIL.

PREFN. METAL CANOPY - SEE 2/A6.3

4\"/>

SEE DET. A/A41 FOR TYP. CORRIDOR ACCENT WALL STRIPES

SEE CIVIL FOR ALL EXTERIOR PAVING - TYP.

SEE CIVIL FOR ALL EXTERIOR PAVING - TYP.

NEW CONC. STEPS - SEE CIVIL

4\"/>

SEE DET. A/A41 FOR RESTROOM ACCENT WALL STRIPES

WALL MOUNTED HVAC PACKAGE UNIT - SEE MECH (TYP.) COORD. CONDENSATE DRAINS WITH CIVIL (TYP.)

NOTE: AT DASHED WALL, FILL CELLS W/ CORE-FIL. BBS JUST PAST HIGHEST ADJACENT CEILING SEAL. ALL WALL PENETRATIONS PRIOR TO INSTALLING CORE-FIL.

PREFN. METAL CANOPY - SEE 2/A6.3

4\"/>

SEE DET. A/A41 FOR TYP. CORRIDOR ACCENT WALL STRIPES

SEE CIVIL FOR ALL EXTERIOR PAVING - TYP.

SEE CIVIL FOR ALL EXTERIOR PAVING - TYP.

NEW CONC. STEPS - SEE CIVIL

4\"/>

SEE DET. A/A41 FOR RESTROOM ACCENT WALL STRIPES

WALL MOUNTED HVAC PACKAGE UNIT - SEE MECH (TYP.) COORD. CONDENSATE DRAINS WITH CIVIL (TYP.)

NOTE: AT DASHED WALL, FILL CELLS W/ CORE-FIL. BBS JUST PAST HIGHEST ADJACENT CEILING SEAL. ALL WALL PENETRATIONS PRIOR TO INSTALLING CORE-FIL.

PREFN. METAL CANOPY - SEE 2/A6.3

4\"/>

SEE DET. A/A41 FOR TYP. CORRIDOR ACCENT WALL STRIPES

SEE CIVIL FOR ALL EXTERIOR PAVING - TYP.

SEE CIVIL FOR ALL EXTERIOR PAVING - TYP.

NEW CONC. STEPS - SEE CIVIL

4\"/>

SEE DET. A/A41 FOR RESTROOM ACCENT WALL STRIPES

WALL MOUNTED HVAC PACKAGE UNIT - SEE MECH (TYP.) COORD. CONDENSATE DRAINS WITH CIVIL (TYP.)

NOTE: AT DASHED WALL, FILL CELLS W/ CORE-FIL. BBS JUST PAST HIGHEST ADJACENT CEILING SEAL. ALL WALL PENETRATIONS PRIOR TO INSTALLING CORE-FIL.

PREFN. METAL CANOPY - SEE 2/A6.3