

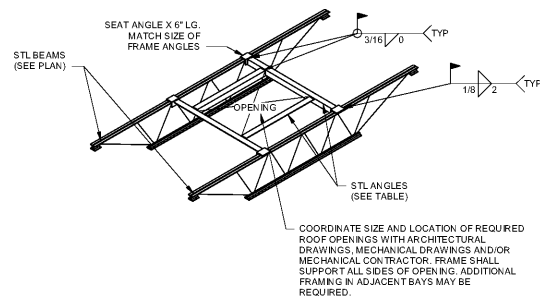
DRAWING ISSUE RECORD		
DATE	REVISIONS	NO.
4-6-2021	ISSUE TO BID	



ADDITION TO COLHAM FERRY  
 ELEMENTARY SCHOOL  
 191 COLHAM FERRY ROAD, WATKINSVILLE, GA 30677  
 FOR THE  
 OCONEE COUNTY BOARD OF EDUCATION  
 OCONEE COUNTY, GEORGIA  
 DOE FACILITY CODE 3050

JAN 15 2020  
 SHL-007-20  
 TUL  
 ABS

**cunningham forehand matthews moore**  
 cunningham, forehand, matthews & moore, architects, inc. - 2011 manchester street, n.e. - atlanta, georgia 30324 - phone (404) 873-2152



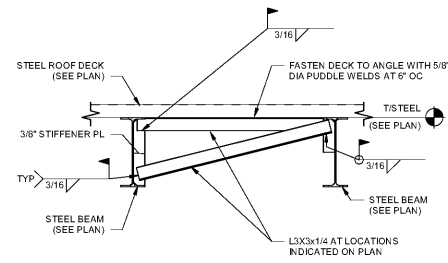
SPAN	ANGLE SIZE
UP TO 4'-0"	L3X3X3/16
4'-1" TO 6'-0"	L4X3X1/4 (LLV)
6'-1" TO 8'-0"	L5X3X1/4 (LLV)
8'-1" TO 10'-0"	L6X4X5/16 (LLV)

- NOTES:
1. PROVIDE SIMILAR FRAMING AT ROOF DRAINS.
  2. WELD/CONNECT DECK TO ALL FRAMING AT 6" OC MAXIMUM SPACING. COORDINATE WITH ENGINEER FOR SPECIAL DETAILS REQUIRED TO CONNECT ANGLES TO EXISTING DECK IN AN INSTALLATION OF NEW UNIT ON EXISTING ROOF FRAMING.
  3. WHEN JOIST BRIDGING CONFLICTS WITH ROOF OPENING FRAMES, STOP BRIDGING AT EACH SIDE OF OPENING. PROVIDE CROSS BRIDGING AT LAST BRIDGING SPACE EACH SIDE OF OPENING AND CONNECT ENDS OF BRIDGING TO OPENING FRAMING. ADD ADDITIONAL BRIDGING AND CROSS BRIDGING ON EACH SIDE OF OPENING ON EACH SIDE OF CUT BRIDGING AREA WITH BRIDGING EXTENDED ONE BAY BEYOND EACH SIDE OF OPENING.
  4. ANCHOR EQUIPMENT AND CURB TO MISCELLANEOUS FRAMING SHOWN AS REQUIRED FOR WIND AND/OR SEISMIC FORCES. COORDINATE WITH EQUIPMENT/CURB MANUFACTURER (CONNECTION DESIGN NOT BY PES STRUCTURAL ENGINEERS).
  5. THIS DETAIL IS NOT APPLICABLE TO ROOFTOP EQUIPMENT CURBS. REFER TO TYPICAL EQUIPMENT CURB SUPPORT DETAIL FOR CURB SUPPORT FRAMING.

TYPICAL ROOF OPENING DECK SUPPORT FRAMING

SCALE: 3/8" = 1'-0"

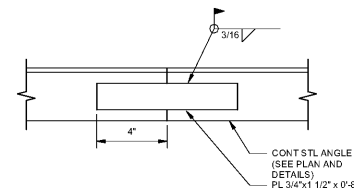
1  
S5.1



TYPICAL BEAM BRACING AT ROOF - SECTION

SCALE: 3/4" = 1'-0"

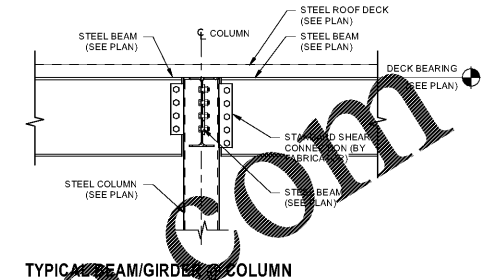
2  
S5.1



TYPICAL CONTINUOUS ROOF ANGLE SPLICE

SCALE: 3" = 1'-0"

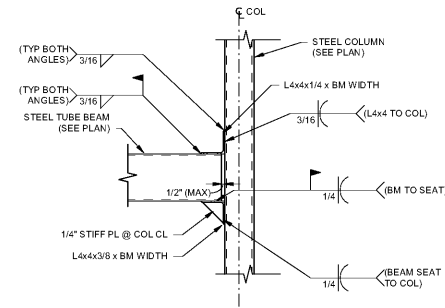
3  
S5.1



TYPICAL BEAM/GIRDER TO COLUMN CONNECTION

SCALE: 1" = 1'-0"

4  
S5.1



TYPICAL OFFSET TUBE BEAM TO COL CONN

SCALE: 1" = 1'-0"

5  
S5.1

Order Plans @ [www.LDILine.com](http://www.LDILine.com)

**PES** STRUCTURAL ENGINEERS

ADDRESS: 1855 Century Place, NE, Suite 201, Atlanta, Georgia 30345  
 PHONE: 770-451-5953 FAX: 770-451-2989 WEB: www.pesengineers.com  
 PES PROJECT NUMBER: 221066  
 PES GEORGIA COA NUMBER: PEF000799  
 EXPIRATION DATE: 08/30/2022



S5.1