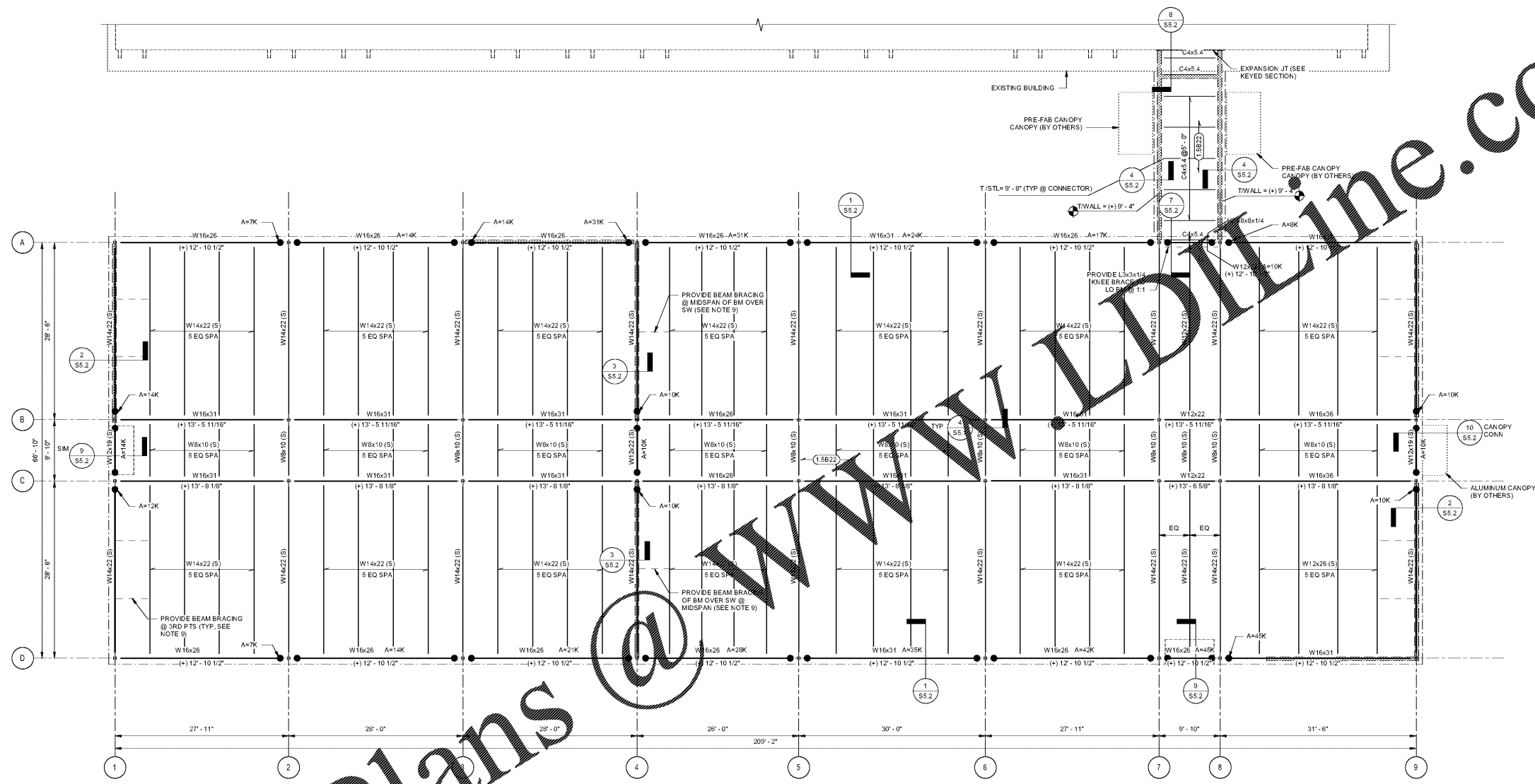


DRAWING ISSUE RECORD		
DATE	REVISIONS	NO.
4-6-2021	ISSUE TO BID	



ADDITION TO COLHAM FERRY
ELEMENTARY SCHOOL
191 COLHAM FERRY ROAD, WATKINSVILLE, GA 30677
FOR THE
OCONEE COUNTY BOARD OF EDUCATION
OCONEE COUNTY, GEORGIA
DOE FACILITY CODE 3050

DATE: DECEMBER 15, 2020
JOB NO: SHL-007-20
JOB: TUL
SHEET: ABS



Order Plans @ www.worldline.com

- ROOF FRAMING PLAN**
- SCALE: 1/8" = 1'-0"
- STEEL ROOF FRAMING PLAN NOTES:
1. (1.5822) DENOTES 23 GAUGE 1-1/2" TYPE B WIDE RIB STEEL ROOF DECK. MINIMUM DECK PROPERTIES:
 $b = 0.155 \text{ IN}^4/\text{FT}$
 $I_x = 0.183 \text{ IN}^4/\text{FT}$
 $S_x = 0.186 \text{ IN}^3/\text{FT}$
 $S_y = 0.192 \text{ IN}^3/\text{FT}$
 2. SEE PLAN FOR TOP OF STEEL ELEVATIONS.
 3. NOTIFY STRUCTURAL ENGINEER OF RECORD IF PIPING WEIGHT IS IN EXCESS OF THOSE NOTED IN SCHEDULE. FOR ALL PIPING SUPPORTED FROM ROOF STRUCTURE SEE S1.2
 4. PROVIDE SUPPORT FRAME AT ROOF DRAINS, VENTS, EXHAUST FANS, HATCHES, AND OTHER OPENINGS LARGER THAN 12" PER 1/55.1. COORDINATE SIZES AND LOCATIONS WITH ARCHITECTURAL, MECHANICAL, ELECTRICAL AND PLUMBING DRAWINGS.
 5. ROOF EDGE ANGLES SHALL BE CONTINUOUS. FOR SPLICE CONNECTION SEE 3155.1
 6. ● DENOTES DRAG CONNECTION. DESIGN CONNECTIONS FOR AXIAL FORCES INDICATED ON PLAN AND IN ELEVATIONS.
A=10K DENOTES DESIGN SERVICE LEVEL (ALLOWABLE STRESS DESIGN) AXIAL DRAG FORCE INCLUDING OVERSTRENGTH FACTOR. IF FORCE IS NOT SHOWN, DESIGN FOR 10K.
(S) DENOTES BEAM SLOPES AT DECK BEARING ELEVATION
 7. ■■■■■ DENOTES CMU SHEAR WALL BELOW. SEE FOUNDATION PLAN FOR ADDITIONAL INFO.
 8. FOR TYPICAL BEAM BRACING DETAIL - SEE 2/55.1
 9. MINIMUM SHEAR LOAD FOR CONNECTION DESIGN SHALL BE 20 KIPS (ASD). FOR BEAMS LESS THAN 14" DEEP, MINIMUM SHEAR LOAD SHALL BE 10 KIPS (ASD)

PES STRUCTURAL ENGINEERS

ADDRESS: 1852 Century Place, NE, Suite 201, Atlanta, Georgia 30345
PHONE: 770-451-5953 FAX: 770-451-2989 WEB: www.pesengineers.com
PES PROJECT NUMBER: 221066
PES GEORGIA COA NUMBER: PEF000799
EXPIRATION DATE: 08/30/2022



cunningham forehand matthews moore

cunningham, forehand, matthews & moore, architects, inc. - 2011 manchester street, n.e. - atlanta, georgia 30324 - phone (404) 873-2152

S2.2