

DRAWING ISSUE RECORD		
DATE	REVISION	NO.
4-4-2011	ISSUE TO BID	



SITE WORK CONSTRUCTION DETAILS

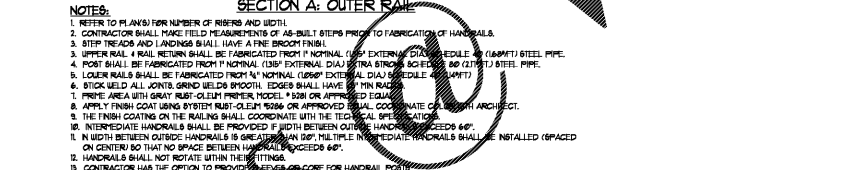
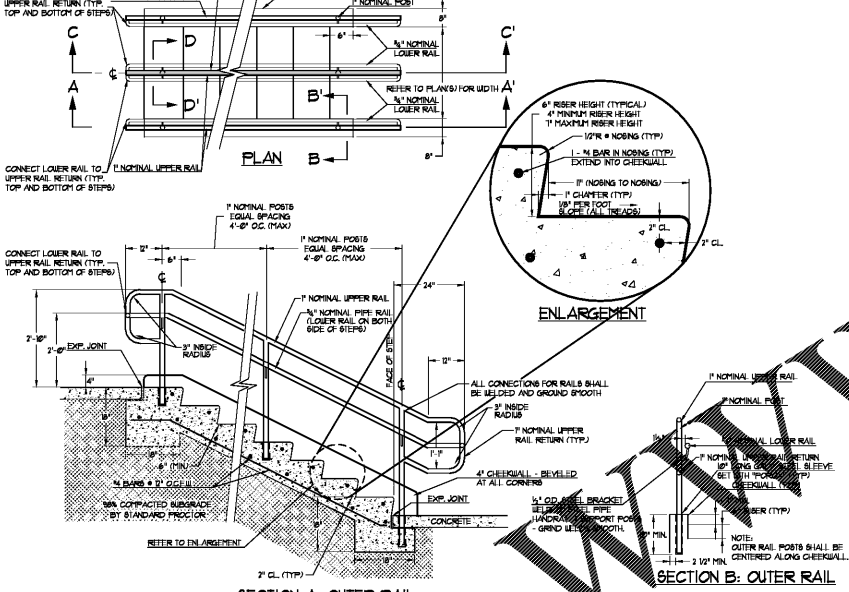
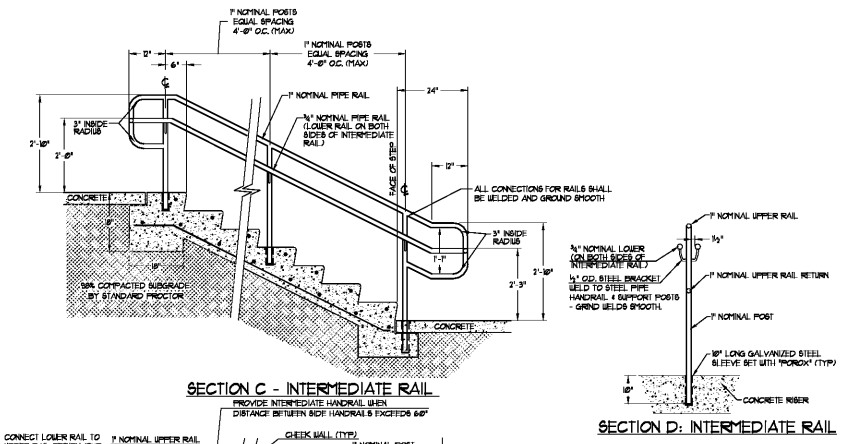
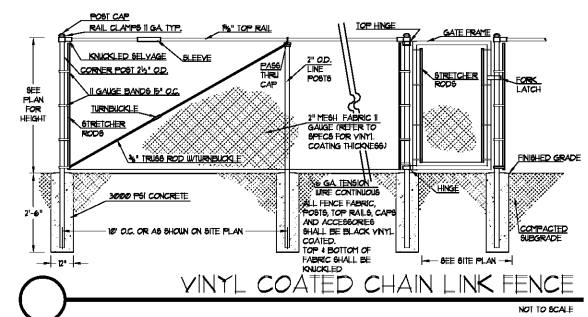
ADDITION TO COLHAY FERRY
 ELEMENTARY SCHOOL
 181 COLHAY FERRY ROAD WATKINSVILLE, GA 30611
 FOR THE BOARD OF EDUCATION
 OCONEE COUNTY, GEORGIA
 OCS FACILITY CODE 3000

DATE: DECEMBER 15, 2010
JOB NO: 06-1-0917-26
DWG. BY: JCH
CHK. BY: TMS

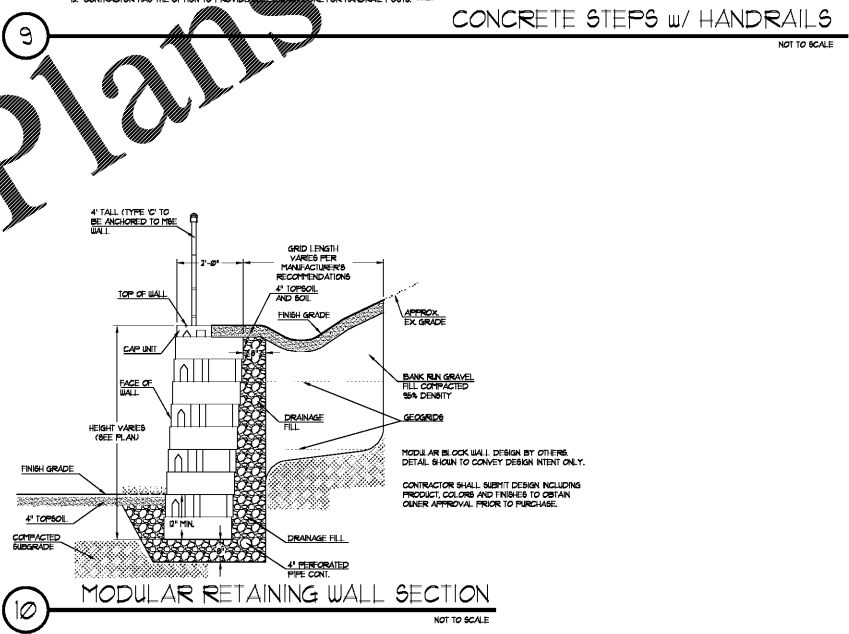
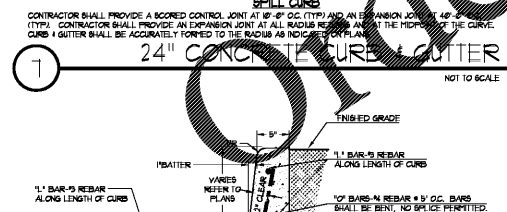
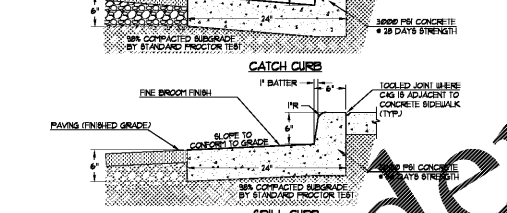
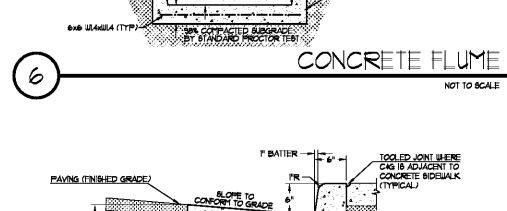
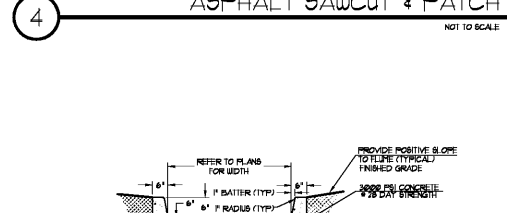
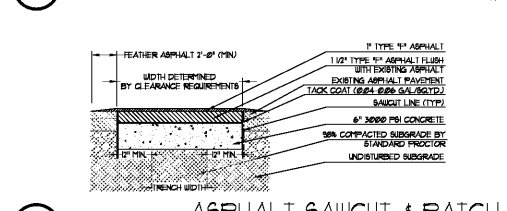
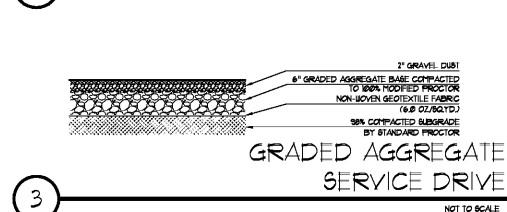
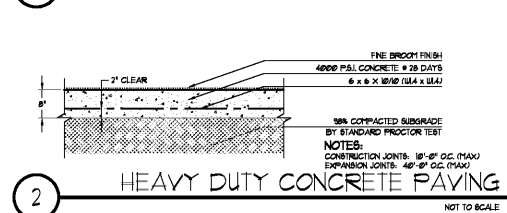
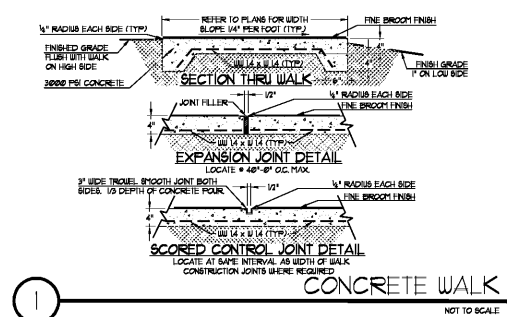
cunningham, forhand, matthews & moore, architects, inc. - 2011 manchester street, n.e. - atlanta, georgia 30324 - phone (404) 873-2152

cunningham forhand matthews & moore

C7.00



NOTES:
 1. REFER TO PLANS FOR NUMBER OF RAILS AND WIDTH.
 2. CONTRACTOR SHALL FURNISH ALL MATERIALS AND FABRICATE ALL STEPS PRIOR TO FABRICATION OF HANDRAILS.
 3. STEP TREADS AND LANDINGS SHALL HAVE A FINE BROOK FINISH.
 4. UPPER RAIL & RAIL RETURN SHALL BE FABRICATED FROM 1 1/2" NOMINAL (1.315" EXTERNAL DIA) EXTRA STRONG & SOFTENED 30 (ASTM) STEEL PIPE.
 5. LOWER RAIL SHALL BE FABRICATED FROM 1 1/2" NOMINAL (1.315" EXTERNAL DIA) MEDIUM WALL (ASTM) STEEL PIPE.
 6. STOCK WELD ALL JOINTS. GRIND WELDS SMOOTH. EDGES SHALL HAVE 1/8" MIN RADIUS.
 7. PRIME AREA WITH GRAY PAINT. GLOSSY PROPER MODEL. 1/32" OR APPROX. EQUAL.
 8. APPLY FINISH COAT USING SYSTEM MUST-OLEUM 1000 OR APPROVED EQUAL. COORDINATE COLOR WITH ARCHITECT.
 9. THE FINISH COATING ON THE RAILS SHALL COORDINATE WITH THE TREADS AND RISES.
 10. INTERMEDIATE HANDRAILS SHALL BE PROVIDED IF WIDTH BETWEEN OUTER HANDRAILS EXCEEDS 48".
 11. IN WIDTH BETWEEN OUTER HANDRAILS IS GREATER THAN 48" MULTIPLE INTERMEDIATE HANDRAILS SHALL BE INSTALLED (SPACED ON CENTER) SO THAT NO SPACE BETWEEN HANDRAILS EXCEEDS 48".
 12. HANDRAILS SHALL NOT ROTATE WITH THE FITTINGS.
 13. CONTRACTOR HAS THE OPTION TO PROVIDE A RAIL END CAP FOR HANDRAIL POSTS.



UTILITY LOCATION NOTES

- CONTRACTOR SHALL BE RESPONSIBLE TO SECURE THE SERVICES OF A PRIVATE UTILITY LOCATION FIRM DURING THE ENTIRE COURSE OF CONSTRUCTION. CONTRACTOR SHALL PAY FOR SAID SERVICES.
- CONTRACTOR SHALL IMMEDIATELY REPAIR ALL UTILITIES DAMAGED BY CONSTRUCTION ACTIVITIES, AT NO ADDITIONAL COST TO THE OWNER.
- THE UTILITIES SHOWN ARE SCHEMATIC AND FOR THE CONTRACTOR'S CONVENIENCE ONLY. THERE MAY BE OTHER UTILITIES NOT SHOWN ON THESE PLANS. THE DESIGN PROFESSIONAL ASSUMES NO RESPONSIBILITY FOR THE LOCATIONS SHOWN AND IT SHALL BE THE CONTRACTOR'S RESPONSIBILITY TO VERIFY THE LOCATIONS OF UTILITIES WITHIN THE LIMITS OF THE WORK. DAMAGE TO EXISTING UTILITIES BY THE CONTRACTOR FROM HIS/HER OPERATIONS SHALL BE IMMEDIATELY REPAIRED AT NO ADDITIONAL COST TO THE OWNER.
- CONTRACTOR SHALL BE RESPONSIBLE FOR CORRECTION OF BACKFILL OF ALL UTILITY TRENCHES WITHIN SITE WORK LIMITS. THIS INCLUDES TRENCHES DUG AND BACKFILLED BY LOCAL UTILITIES SUCH AS POWER, GAS, TELEPHONE, ETC. CONTRACTOR SHALL PROVIDE ADDITIONAL BACKFILL AND CORRECTION AS NECESSARY, IF SETTLEMENT OCCURS.

CALL BEFORE YOU DIG

GEORGIA811
www.Georgia811.com

GEORGIA LAW MANDATES THAT BEFORE BEGINNING ANY HEAVY DIGGER OR EXCAVATION WORK, YOU MUST CONTACT GEORGIA 811 BY USING EYEGLASS OR UNDERGROUND OR BY CALLING 811 OR 1-800-88-7411 AT LEAST 48 HOURS BUT NO MORE THAN 10 WORKING DAYS IN ADVANCE TO HAVE UTILITY LINES MARKED.

24-HOUR EROSION CONTACT

WAPE, BROCK TISON
COMPANY/OCONEE COUNTY SCHOOLS
EMAIL: ADDRESS@OCONEECOUNTYSCHOOLS.GA
PHONE NUMBER: 1-866-381-2880

DO NOT BREAK OR DUPLICATE

- DO NOT DUPLICATE DRAWINGS WITHOUT PERMISSION.
- READ THE SPECIFICATIONS. THIS SET OF DRAWINGS AND SPECIFICATIONS REFLECTS THE PROJECT SCOPE AND CONTRACT REQUIREMENTS. INDIVIDUAL SHEETS SEPARATED FROM THE SET MAY NOT ACCURATELY REFLECT ALL INFORMATION NEEDED TO INSTALL. COVER CLEAN ITEMS DO NOT REPAIR. THIS SET OF DRAWINGS INTO INDIVIDUAL SHEETS.

