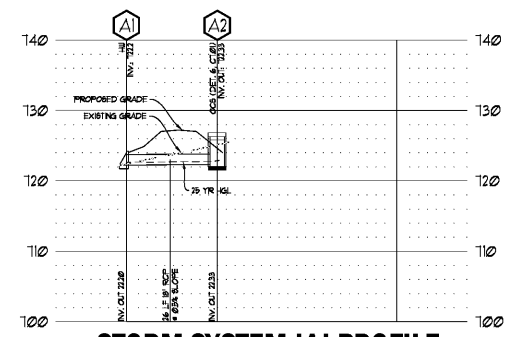
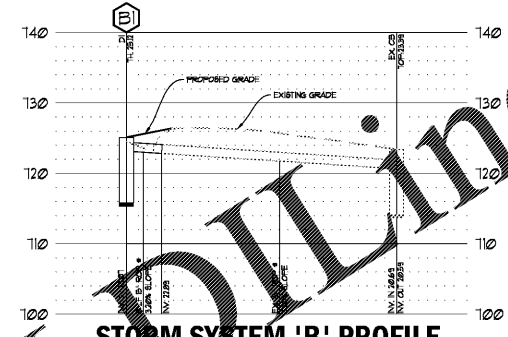


SECTION 'A': SAND FILTER AND POND OUTFALL  
SCALE: 1" = 8'



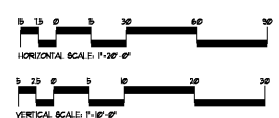
STORM SYSTEM 'A' PROFILE



STORM SYSTEM 'B' PROFILE

BREEDLOVE LAND PLANNING, INC. PIPECHART							PROJECT: COLHAM FERRY ES ADDITION									
YEAR STORM EVENT: 25 YEAR							PROJECT LOCATION: OCONEE CO., GA									
Upstream Structure	Downstream Structure	Drainage Area (ac)	c-factor (C)	Inlet Time (min)	Q (cfs)	Total Q (cfs)	Capacity (cfs)	Pipe Size (in)	Slope (%)	n-value	Velocity (ft/s)	Depth (ft)	Inv. Up (ft)	Inv. Dn (ft)	HGL Up (ft)	HGL Dn (ft)
A	A2	A1	see hydro	Q25 = 1.20 cfs	Q100 = 8.49 cfs	0.72	7.68	18	1.0	0.013	3.09	0.28	1325.94	1326.30	1326.27	1325.58

DRAWING ISSUE RECORD		
DATE	REVISION	NO.
4-8-2021	ISSUE TO BID	



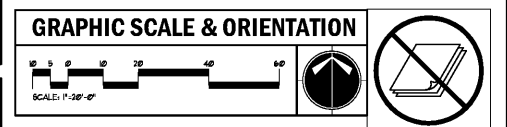
Order Plans @ www.LDOnline.com

REFER TO SHEET C0.00  
FOR AS-BUILT  
REQUIREMENTS

24-HOUR EROSION CONTACT

- DO NOT BREAK OR DUPLICATE**
- DO NOT DUPLICATE DRAWINGS WITHOUT PERMISSION.
  - READ THE SPECIFICATIONS. THIS SET OF DRAWINGS AND SPECIFICATIONS DEFINE PROJECT SCOPE AND CONTRACT REQUIREMENTS. INDIVIDUAL SHEETS SEPARATED FROM THE SET MAY NOT ADEQUATELY REFLECT ALL INFORMATION NEEDED TO INSTANTLY COVER CERTAIN ITEMS. DO NOT REPLICATE THIS SET OF DRAWINGS INTO INDIVIDUAL SHEETS.

- UTILITY LOCATION NOTES**
- CONTRACTOR SHALL BE RESPONSIBLE TO SECURE THE SERVICES OF A PRIVATE UTILITY LOCATOR PRIOR DURING THE ENTIRE COURSE OF CONSTRUCTION. CONTRACTOR SHALL PAY FOR SAID SERVICES.
  - CONTRACTOR SHALL IMMEDIATELY REPAIR ALL UTILITIES DAMAGED BY CONSTRUCTION ACTIVITIES, AT NO ADDITIONAL COST TO THE OWNER.
  - THE UTILITIES SHOWN ARE SCHEMATIC AND FOR THE CONTRACTOR'S CONVENIENCE ONLY. THERE MAY BE OTHER UTILITIES NOT SHOWN ON THESE PLANS. THE DESIGN PROFESSIONAL ASSUMES NO RESPONSIBILITY FOR THE LOCATION SHOWN AND IT SHALL BE THE CONTRACTOR'S RESPONSIBILITY TO VERIFY THE LOCATIONS OF UTILITIES WITHIN THE LIMITS OF THE WORK. DAMAGE TO EXISTING UTILITIES BY THE CONTRACTOR FROM HER OPERATIONS SHALL BE IMMEDIATELY REPAIRED AT NO ADDITIONAL COST TO THE OWNER.
  - CONTRACTOR SHALL BE RESPONSIBLE FOR CONSTRUCTION OF BACKFILL OF ALL UTILITY TRENCHES WITHIN SITE WORK LIMITS. THIS INCLUDES TRENCHES DUG AND BACKFILLED BY LOCAL UTILITIES, SUCH AS POWER, GAS, TELEPHONE, ETC. CONTRACTOR SHALL PROVIDE ADDITIONAL BACKFILL AND COMPACTION AS NECESSARY, IF SETTLEMENT OCCURS.



**CALL BEFORE YOU DIG**

**GEORGIA811**  
www.Georgia811.com

GEORGIA LAW MANDATES THAT, BEFORE BEGINNING ANY MECHANIZED DIGGING OR EXCAVATION WORK, YOU MUST CONTACT GEORGIA 811 BY USING REQUEST ON WAREHOUSE WEBSITE OR BY CALLING 811 OR 1-800-877-8111 AT LEAST 48 HOURS BUT NO MORE THAN 10 WORKING DAYS IN ADVANCE TO HAVE UTILITY LINES MARKED.

**PIPE PROFILE LEGEND**

---	EXISTING GRADE
- - -	PROPOSED GRADE
---	75 YR UEL
---	150 YR UEL
---	REINFORCED CONCRETE PIPE (CLASS IV)
---	DUCTILE IRON PIPE (CLASS 50)
---	HIGH-DENSITY POLYETHYLENE PIPE
---	ALUMINIZED STEEL TYPE 2
---	ALUMINIZED STEEL TYPE 2 SMOOTH BORE (DRAINAGE HEAD)
---	POLYETHYLENE GLYCOL PIPE (SCHEDULE 40)
---	HEADWALL
---	DROP INLET (FEDERAL TOP)
---	JUNCTION BOX
---	SINGLE RING CATCH BASIN
---	DOUBLE RING CATCH BASIN
---	CATCH BASIN
---	BEE HIVE CATCH BASIN
---	CORNER MANHOLE (GA DOT) STD
---	FLARED END SECTION
---	SAFETY END SECTION
---	INVERT ELEVATION
---	HYDRAULIC GRADE LINE

**BREEDLOVE LAND PLANNING**  
Landscape Architects • Civil Engineers  
www.landplanning.net  
BLP JOB# 18160

POND DETAIL, STORM PROFILES

ADDITION TO COLHAM FERRY  
ELEMENTARY SCHOOL  
181 COLHAM FERRY ROAD WATKINSVILLE, GA 30611  
FOR THE  
OCONEE COUNTY BOARD OF EDUCATION  
OCONEE COUNTY, GEORGIA  
JOB NO. 181-2017-26  
DATE: DECEMBER 15, 2020

cunningham, forhand, matthews & moore, architects, inc. - 2011 manchester street, n.e. - atlanta, georgia 30324 - phone (404) 873-2152

Cunningham, Forhand, Matthews & Moore