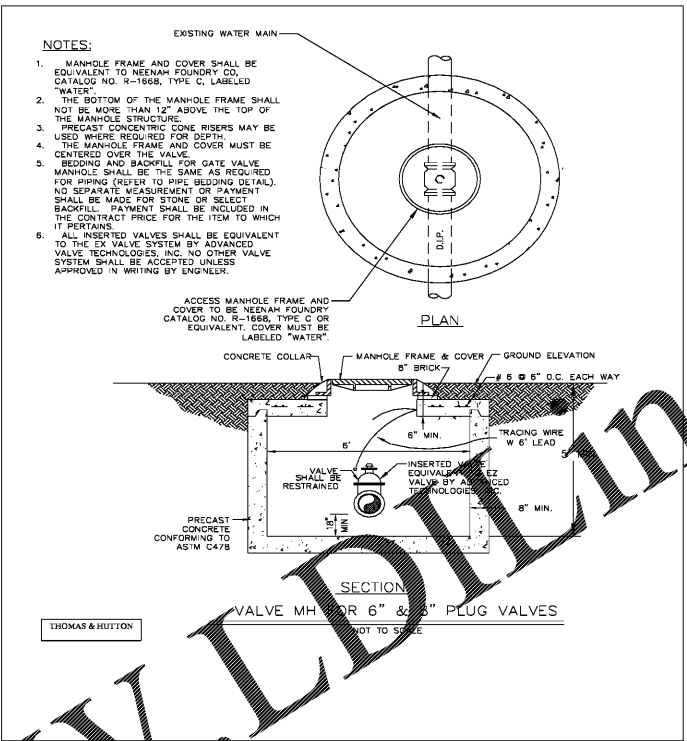


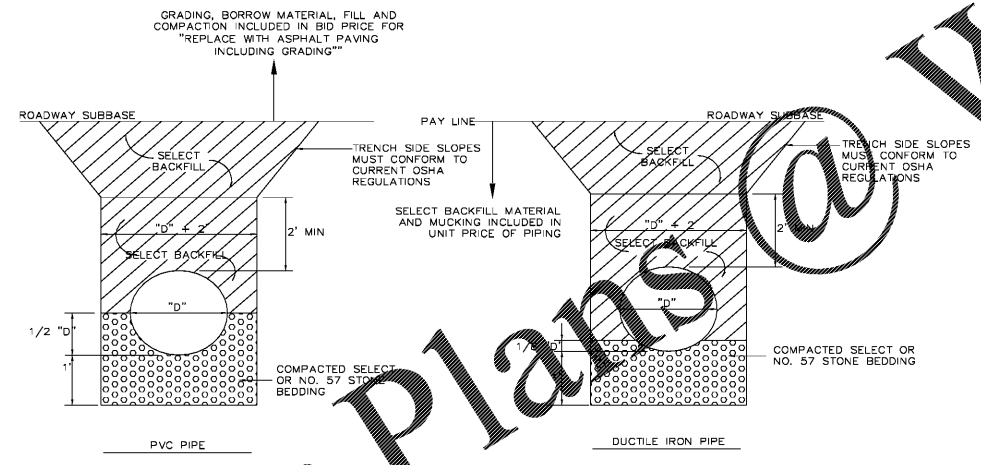
RELOCATED WATER/FORCEMAIN CONNECTION TO EXISTING MAIN DETAIL  
SCALE: N.T.S.

- NOTES:
- ALL TAPS AND LINE STOPS SHALL BE PERFORMED BY EQUIPMENT INSTALLER ACTIVELY ENGAGED IN HOT TAPS AND LINE STOPS INSTALLATIONS FOR A MINIMUM OF 3 YEARS, WITH AT LEAST 5 PROJECTS OF SIMILAR SIZE AND TYPE.
  - APPROVED TAPPING EQUIPMENT FABRICATORS:
    - HYDRA-STOP BY ADS/SEVERN TRENT FLOWSERV US, INC.
    - APPROVED EQUIVALENT
  - LINE STOP SYSTEM SHALL BE RATED TO A MINIMUM OF 250 PSI WITH A MINIMUM GUARANTEE STOPPAGE OF FLOW EQUAL TO 95%.
  - CONTRACTOR AND INSTALLER SHALL COORDINATE ALL CONNECTIONS WITH THE CITY OF SAVANNAH ENGINEERING DEPARTMENT. CONTRACTOR SHALL PROVIDE A MINIMUM 72 HOURS NOTICE PRIOR TO ANY CONNECTION ACTIVITIES.
  - EXTERIOR OF EXISTING PIPE SHALL BE CLEANED AND ANY DAMAGE TO EXISTING PIPING REPAIRED PRIOR TO TAPPING OF EXISTING MAIN.
  - ALL JOINTS WITHIN THE EXPOSED CONNECTION AREA SHALL BE RESTRAINED WITH BELL JOINT HARNESS RESTRAINTS EQUIVALENT TO THOSE MANUFACTURED BY EBBA IRON, INC.
  - TAPPING AND LINE STOP ACTIVITIES SHALL BE SEQUENCED AND COORDINATED TO ELIMINATE LOSS OF SERVICE.



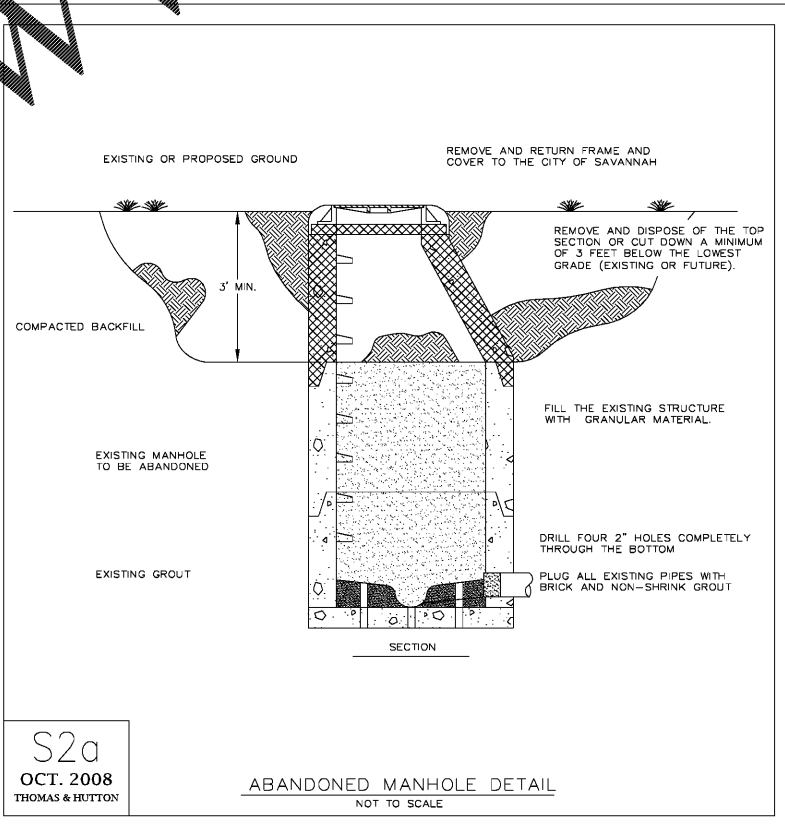
- NOTES:
- MANHOLE FRAME AND COVER SHALL BE EQUIVALENT TO NEENAH FOUNDRY CO. CATALOG NO. R-1668, TYPE C, LABELED "WATER".
  - THE BOTTOM OF THE MANHOLE FRAME SHALL NOT BE MORE THAN 12" ABOVE THE TOP OF THE MANHOLE STRUCTURE.
  - PRECAST CONCRETE CONE RISERS MAY BE USED WHERE REQUIRED FOR DEPTH.
  - THE MANHOLE FRAME AND COVER MUST BE CENTERED OVER THE VALVE.
  - BEDDING AND BACKFILL FOR GATE VALVE MANHOLE SHALL BE THE SAME AS REQUIRED FOR PIPING (REFER TO PIPING BEDDING DETAIL). NO SEPARATE MEASUREMENT OR PAYMENT SHALL BE MADE FOR STONE OR SELECT BACKFILL. PAYMENT SHALL BE INCLUDED IN THE CONTRACT PRICE FOR THE ITEM TO WHICH IT PERTAINS.
  - ALL INSERTED VALVES SHALL BE EQUIVALENT TO THE EX VALVE SYSTEM BY ADVANCED VALVE TECHNOLOGIES, INC. NO OTHER VALVE SYSTEM SHALL BE ACCEPTED UNLESS APPROVED IN WRITING BY ENGINEER.

THOMAS & HUTTON



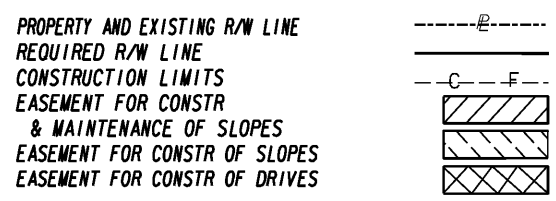
WATER MAIN & FORCE MAIN PIPE BEDDING DETAILS  
SCALE: NONE

- NOTES:
- FOR BEDDING PURPOSES CONTRACTOR SHALL INCLUDE A MINIMUM OF 1'-0" OF UNDERCUT AND STONE BEDDING BENEATH DESIGN PIPE INSTALLATIONS.
  - WHERE THE ENGINEER DETERMINES ADDITIONAL UNDERCUTTING AND STONE BEDDING IS REQUIRED TO PROVIDE A STABLE SUBGRADE, IT SHALL BE PAID FOR AT THE COST OF REMOVING THE ADDITIONAL UNSUITABLE MATERIAL, BEYOND THAT SHOWN ON THE DETAILS, AND FURNISHING AND INSTALLING ADDITIONAL STONE BEDDING.
  - BECAUSE THE AMOUNT OF ADDITIONAL UNDERCUTTING FOR STONE BEDDING REQUIRED IN AREAS OF WEAK AND UNSTABLE SUBGRADE IS UNKNOWN, THE BID FORM INCLUDES 200 CUBIC YARDS (CY) OF STONE BEDDING, AND 200 CUBIC YARDS OF SAND BACKFILL IN ORDER TO ESTABLISH A UNIT PRICE FOR THESE ITEMS. NO PAYMENT FOR ADDITIONAL STONE BEDDING OR SAND BACKFILL BEYOND THE QUANTITY SHOWN ON THE DETAILS SHALL BE PAID WITHOUT PRIOR WRITTEN APPROVAL OF LOCATION, QUANTITY, AND OVERALL PRICE BY ENGINEER.
  - NO SEPARATE MEASUREMENT OR PAYMENT SHALL BE MADE FOR THE MINIMUM STONE BEDDING AND SAND BACKFILL AS SHOWN ON THE DETAILS. PAYMENT SHALL BE INCLUDED IN THE CONTRACT UNIT PRICE FOR INSTALLING THE PIPING ASSOCIATED WITH THE BEDDING.



S2a  
OCT. 2008  
THOMAS & HUTTON

ABANDONED MANHOLE DETAIL  
NOT TO SCALE



BEGIN LIMIT OF ACCESS.....BLA  
 END LIMIT OF ACCESS.....ELA  
 LIMIT OF ACCESS  
 REQ'D R/W & LIMIT OF ACCESS

**THOMAS & HUTTON**  
 Engineering | Surveying | Planning | GIS | Consulting  
 50 Park of Commerce Way • PO Box 2727  
 Savannah, GA 31402-2727 • 912.234.5300  
 www.thomasandhutton.com  
 Charleston, SC | Columbia, SC | Myrtle Beach, SC  
 Savannah, GA | Wilmington, NC

REVISION DATES	

UTILITY RELOCATION PLANS			
DELESSEPS/LA ROCHE AVE FM			
WATERS AVE TO SKIDAWAY RD			
CHECKED:	DATE:	DRAWING No.	
BACKCHECKED:	DATE:	44-0019	
CORRECTED:	DATE:		
VERIFIED:	DATE:		