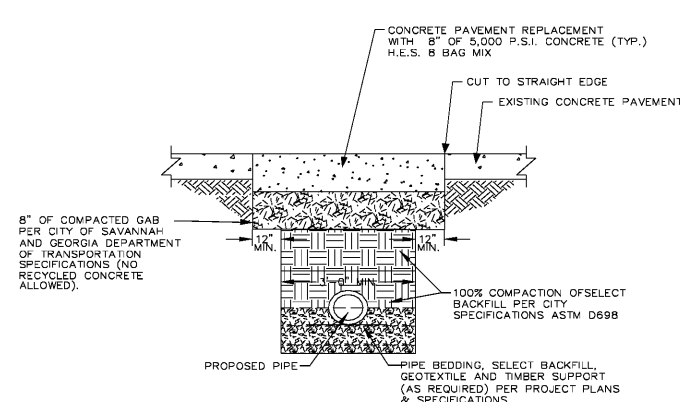


**NOTES:**

1. COMPACT BASE AND SUB-BASE TO 100% STANDARD (ASTM D698) PER SECTION 02200, PART 3.01B OF CITY TECHNICAL SPECIFICATIONS.
2. CONCRETE IN THE ROW TO BE 5000PSI PER SECTION 03300, CHAPTER 3.2 AND REINFORCED WITH FIBERMESH OR STEEL PER SECTION 3300, CHAPTER 5 OF CITY TECHNICAL SPECIFICATIONS.
3. ALL LATERAL STREET CUTS MUST BE COVERED WITH STEEL PLATES OF SUFFICIENT THICKNESS TO SPAN THE CUT WITHOUT NOTICABLE DEFLECTION. PLATES TO REMAIN IN PLACE UNTIL THE CONCRETE HAS GAINED SUFFICIENT STRENGTH TO WITHSTAND TRAFFIC LOADS (24 HOUR MINIMUM).
4. CONTRACTOR SHALL MILL AND INLAY BEYOND THE CUT LIMITS FOR THE FULL LANE WIDTH, OR ROAD SURFACE, TO IMPROVE ROAD SMOOTHNESS AND APPEARANCE. THE MILL/INLAY WILL EXTEND A MINIMUM OF 50' EACH SIDE OF THE REPAIR TRENCH OR REPAIR AREA AND WILL BE BROUGHT FLUSH WITH THE EXISTING PAVEMENT. PAVING WILL BE SAW CUT TO A STRAIGHT EDGE AND THE ROADWAY WILL BE RESURFACED WITH A MINIMUM OF 1.5" OF 12.5mm HOT ASPHALT SUPERPAVE.
5. ALL STREET PATCHES MUST BE SQUARE OR RECTANGULAR WITH NEAT, STRAIGHT, SAW CUT EDGES.
6. CONTRACTOR SHALL REINSTALL ALL STRIPING, PAVEMENT MARKERS, SIGNAL LOOPS, ETC. AFFECTED PAVEMENT REPLACEMENT ITEMS TO BE REINSTALLED SHALL BE IN ACCORDANCE WITH THE ORIGINAL DESIGN.

**WATER, SEWER, AND STORM UTILITY ASPHALT PAVEMENT REPLACEMENT**

SCALE: NONE

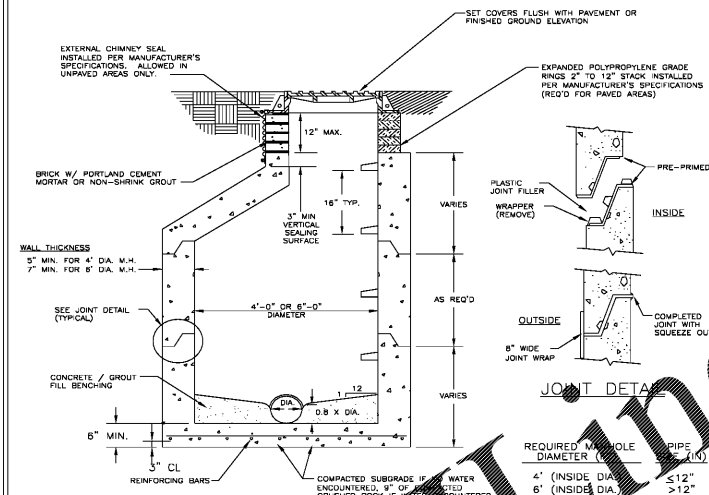


**NOTES:**

1. COMPACT BASE AND SUB-BASE TO 100% STANDARD (ASTM D698) PER SECTION 02200, PART 3.01B OF CITY TECHNICAL SPECIFICATIONS.
2. CONCRETE IN THE ROW TO BE 5000PSI PER SECTION 03300, CHAPTER 3.2 AND REINFORCED WITH FIBERMESH OR STEEL PER SECTION 3300, CHAPTER 5 OF CITY TECHNICAL SPECIFICATIONS.
3. ALL LATERAL STREET CUTS MUST BE COVERED WITH STEEL PLATES OF SUFFICIENT THICKNESS TO SPAN THE CUT WITHOUT NOTICABLE DEFLECTION. PLATES TO REMAIN IN PLACE UNTIL THE CONCRETE HAS GAINED SUFFICIENT STRENGTH TO WITHSTAND TRAFFIC LOADS (24 HOUR MINIMUM).
4. ALL STREET PATCHES MUST BE SQUARE OR RECTANGULAR WITH NEAT, STRAIGHT, SAW CUT EDGES.
5. CONTRACTOR SHALL REINSTALL ALL STRIPING, PAVEMENT MARKERS, SIGNAL LOOPS, ETC. AFFECTED PAVEMENT REPLACEMENT ITEMS TO BE REINSTALLED SHALL BE IN ACCORDANCE WITH THE ORIGINAL DESIGN.

**WATER, SEWER, AND STORM UTILITY CONCRETE PAVEMENT REPLACEMENT**

SCALE: NONE



**NOTES:**

1. PRECAST REINFORCED CONCRETE TOPS, RESEALERS AND RINGS SHALL CONFORM TO LATEST ASTM C-478 STD. SPECIFICATIONS.
2. INTERIOR AND EXTERIOR OF MANHOLE SHALL BE COATED IN ACCORDANCE WITH SECTION 02555 OF CITY OF SAVANNAH STD. SPECIFICATION.
3. MANUFACTURER CERTIFICATION THAT MANHOLE MEETS ASTM SPECIFICATION SHALL BE SUBMITTED TO CITY OF SAVANNAH.
4. FOR MANHOLE RING AND COVER, SEE DETAIL S10.
5. FOR MANHOLE STEPS SEE DETAIL S15. STEPS TO BE INSTALLED IN A VERTICAL ROW ON 16" CENTERS.
6. CHECK FOR BUOYANCY.
7. ALL PIPE PENETRATIONS SHALL HAVE A BOOT CONNECTION IN ACCORDANCE WITH DETAIL S12.

**STANDARD PRECAST CONCRETE MANHOLE**

STANDARD CONSTRUCTION DETAILS



SCALE: N.T.S.  
DATED: JAN 2017  
PLATE NUMBER: S1

STANDARD CONSTRUCTION DETAILS

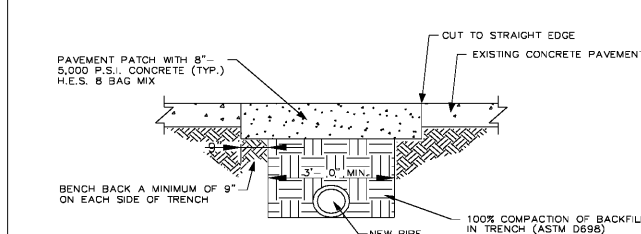
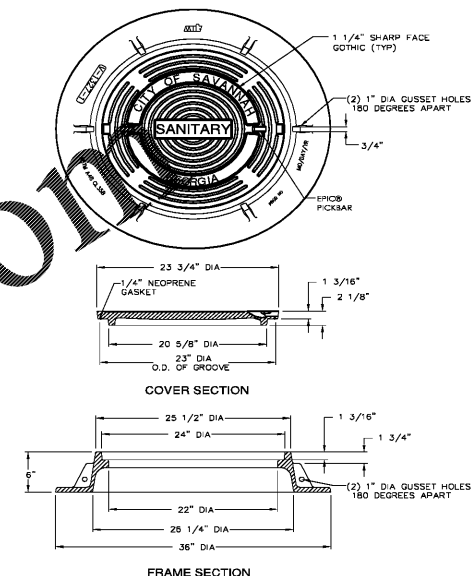


SCALE: N.T.S.  
DATED: JAN 2017  
PLATE NUMBER: S10

**SANITARY MANHOLE RING AND COVER**

**NOTE:**

1. MANHOLE RING AND COVER SHALL BE IN COMPLIANCE TO CITY OF SAVANNAH SPECIFICATION 02554

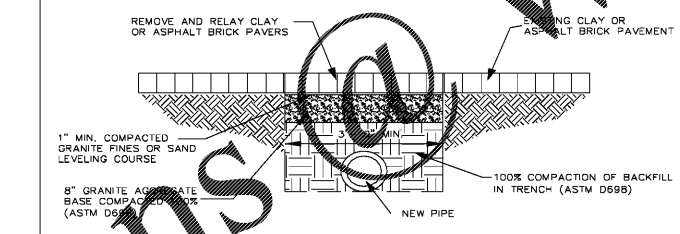


**NOTES:**

1. COMPACT BASE AND SUB-BASE TO 100% STANDARD (ASTM D698) PER SECTION 02200, PART 3.01B OF CITY TECHNICAL SPECIFICATIONS.
2. CONCRETE IN THE ROW TO BE 5000PSI PER SECTION 03300, CHAPTER 3.2 AND REINFORCED WITH FIBERMESH OR STEEL PER SECTION 3300, CHAPTER 5 OF CITY TECHNICAL SPECIFICATIONS.
3. ALL LATERAL STREET CUTS MUST BE COVERED WITH STEEL PLATES OF SUFFICIENT THICKNESS TO SPAN THE CUT WITHOUT NOTICABLE DEFLECTION. PLATES TO REMAIN IN PLACE UNTIL THE CONCRETE HAS GAINED SUFFICIENT STRENGTH TO WITHSTAND TRAFFIC LOADS (24 HOUR MINIMUM).
4. ALL STREET PATCHES TO BE SQUARE OR RECTANGULAR WITH NEAT, STRAIGHT, SAW CUT EDGES.

**STANDARD CONSTRUCTION DETAILS CONCRETE PAVEMENT REPLACEMENT**

APPROVED: SIGNATURE ON FILE, CITY ENGINEER. SCALE: N.T.S., DATED: FEBRUARY 2009. PLATE NUMBER: P08

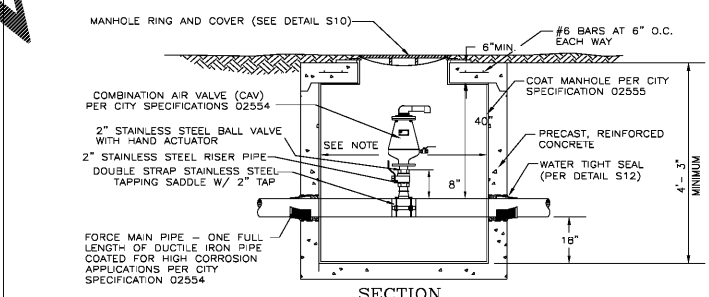


**NOTES:**

1. ASPHALT BLOCK TO BE UNIFORM IN SIZE MEASURING 5"x12"x2.5" AND CONFORM TO ASTM D312 AND HAVE NATURAL FINISH. INSTALL PER MANUFACTURER'S RECOMMENDATIONS.
2. CLAY PAVERS TO BE PINE HALL FLASH RED ENGLISH EDGE HEAVY DUTY OR EQUAL, UNIFORM IN SIZE MEASURING 4"x8"x2.5" WITH BEVELED EDGE, AND SPACERS NBS AND CONFORM TO ASTM C1272-07 TYPE F, APPLICATION PX. INSTALL PER MANUFACTURER'S RECOMMENDATIONS.
3. COMPACT BASE TO 100% STANDARD (ASTM D698) PER SECTION 02200, PART 3.01B OF CITY TECHNICAL SPECIFICATIONS.
4. ALL LATERAL STREET CUTS MUST BE COVERED WITH STEEL PLATES OF SUFFICIENT THICKNESS TO SPAN THE CUT WITHOUT NOTICABLE DEFLECTION. PLATES TO REMAIN IN PLACE UNTIL THE CUT IS REPAIRED.

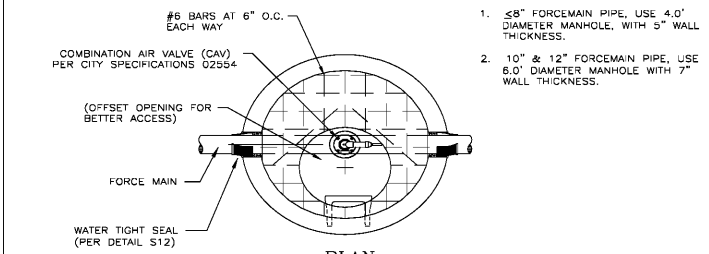
**STANDARD CONSTRUCTION DETAILS BRICK PAVEMENT REPLACEMENT**

APPROVED: SIGNATURE ON FILE, CITY ENGINEER. SCALE: N.T.S., DATED: FEBRUARY 2009. PLATE NUMBER: P09



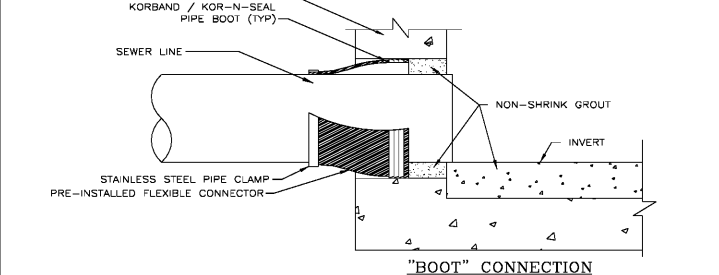
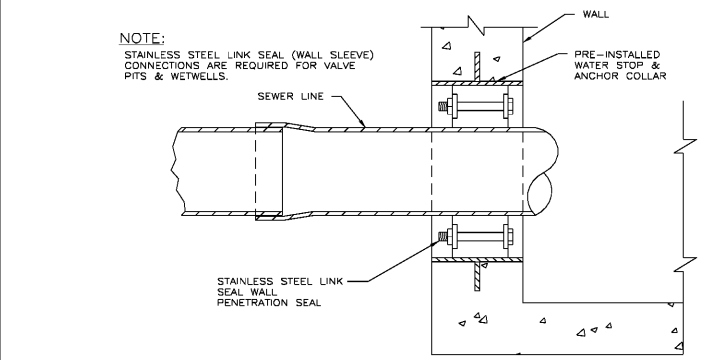
**NOTES:**

1. 5/8" FORCEMAIN PIPE, USE 4.0" DIAMETER MANHOLE, WITH 3" WALL THICKNESS.
2. 10" & 12" FORCEMAIN PIPE, USE 6.0" DIAMETER MANHOLE WITH 7" WALL THICKNESS.



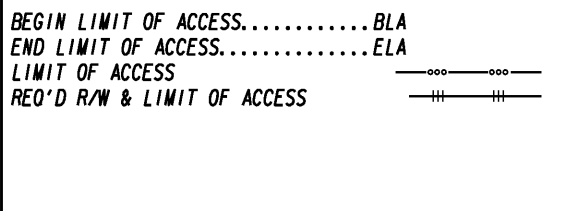
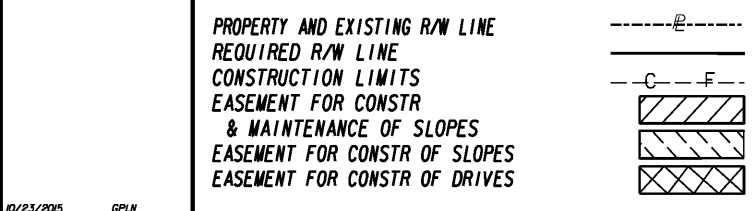
**STANDARD CONSTRUCTION DETAILS 2" AIR RELEASE VALVE AND MANHOLE**

APPROVED: SIGNATURE ON FILE, CITY ENGINEER. SCALE: N.T.S., DATED: JAN 2017. PLATE NUMBER: S11A



**STANDARD CONSTRUCTION DETAILS PRECAST STRUCTURE PIPE CONNECTIONS**

APPROVED: SIGNATURE ON FILE, CITY ENGINEER. SCALE: N.T.S., DATED: JAN 2017. PLATE NUMBER: S12



**THOMAS & HUTTON**  
Engineering | Surveying | Planning | GIS | Consulting  
50 Park of Commerce Way • PO Box 2727  
Savannah, GA 31402-2727 • 912.234.5300  
www.thomasandhutton.com  
Charleston, SC | Columbia, SC | Myrtle Beach, SC  
Savannah, GA | Wilmington, NC

REVISION DATES	

**UTILITY RELOCATION PLANS**  
DELESSEPS/LA ROCHE AVE FM  
WATERS AVE TO SKIDAWAY RD

CHECKED:	DATE:	DRAWING No. <b>44-0018</b>
BACKCHECKED:	DATE:	
CORRECTED:	DATE:	
VERIFIED:	DATE:	