

**NOTES:**  
 THE SEPARATION OF WATER MAINS AND SEWERS SHALL COMPLY WITH THE GEORGIA ENVIRONMENTAL PROTECTION DIVISION MINIMUM STANDARDS FOR PUBLIC WATER SYSTEMS, WHICH ARE GENERALLY AS FOLLOWS:

**A. PARALLEL INSTALLATION:**

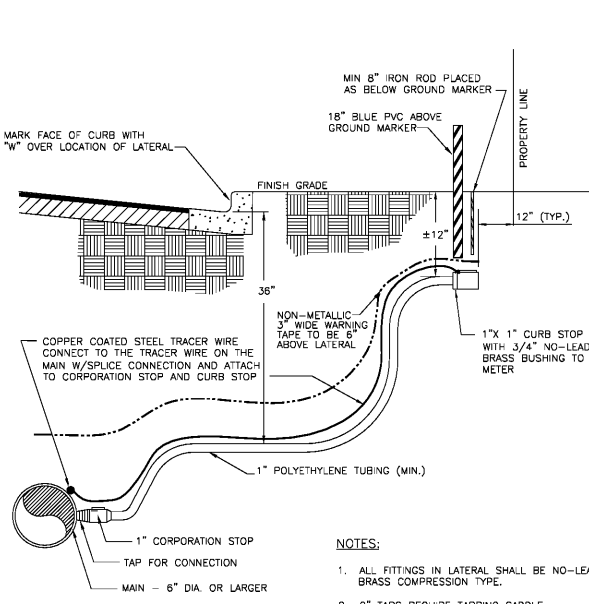
1. NORMAL CONDITIONS: THE INSIDE EDGE OF A WATER LINE SHALL BE LAID AT LEAST 10 FEET HORIZONTALLY FROM THE INSIDE EDGE OF ANY SANITARY SEWER, STORM SEWER OR SEWER MAN-HOLE.
2. UNUSUAL CONDITIONS: WHEN LOCAL CONDITIONS PREVENT A HORIZONTAL SEPARATION OF 10 FEET, AND WHEN APPROVED BY THE ENGINEER, THE INSIDE EDGE OF A WATER MAIN MAY BE LAID A MINIMUM OF 5 FEET FROM THE INSIDE EDGE OF A SEWER PROVIDED THAT THE BOTTOM OF THE WATER MAIN IS AT LEAST 18 INCHES HIGHER THAN THE TOP OF THE SEWER (SEE DETAIL), AND THE WATER MAIN IS LAID IN A SEPARATE TRENCH OR ON AN UNDISTURBED EARTH SHELF.

**B. CROSSINGS:**

1. NORMAL CONDITIONS: WHENEVER POSSIBLE, THE BOTTOM OF THE WATER MAIN SHALL BE AT LEAST 18 INCHES HIGHER THAN THE TOP OF THE SEWER.
2. UNUSUAL CONDITIONS: IF A WATER MAIN MUST CROSS UNDER A SEWER, THE TOP OF THE WATER MAIN SHALL BE AT LEAST 18 INCHES LOWER THAN THE BOTTOM OF THE SEWER, THE WATER MAIN PIPE SHALL BE DUCTILE IRON PIPE CENTERED AT THE CROSSING SO THAT THE JOINTS ARE EQUIDISTANT AND AS FAR AS POSSIBLE FROM THE SEWER, AND ADEQUATE STRUCTURAL SUPPORT SHALL BE PROVIDED FOR THE SEWER TO PREVENT EXCESSIVE DEFLECTION OF THE SEWER AT THE CROSSING. ADEQUATE STRUCTURAL SUPPORT SHALL INCLUDE BACKFILLING THE ENTIRE UTILITY CROSSING AREA WITH 3/4" CRUSHED STONE AS SHOWN IN THE DETAIL.

MINIMUM WATER AND SEWER PIPE SEPARATION REQUIREMENTS

STANDARD CONSTRUCTION DETAILS  
 CITY OF SAVANNAH  
 WATER RESOURCES AND PUBLIC WORKS BUREAU  
 SCALE: N.T.S.  
 DATED: JAN 2017  
 PLATE NUMBER: WS1

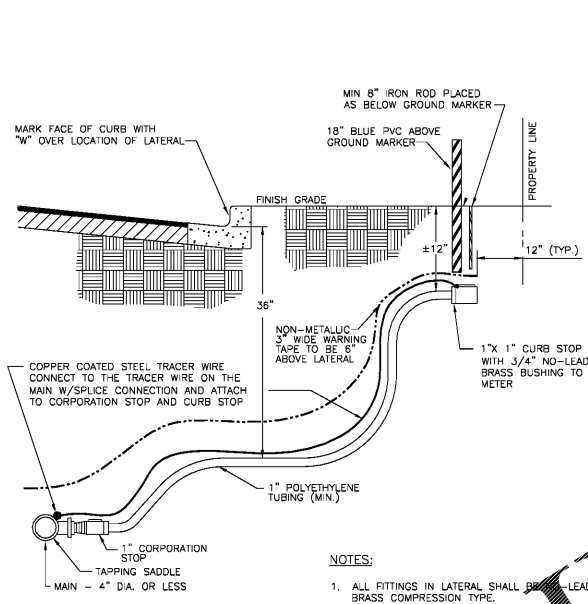


**NOTES:**

1. ALL FITTINGS IN LATERAL SHALL BE NO-LEAD BRASS COMPRESSION TYPE.
2. 2" TAPS REQUIRE TAPPING SADDLE.
3. CURB STOP MARKER REQUIRED FOR NEW DEVELOPMENTS.
4. TERMINATE CURB STOP IN EXISTING METER BOXES PER DETAILS WB -W11.

WATER SERVICE LATERAL (6" OR LARGER MAIN)

STANDARD CONSTRUCTION DETAILS  
 CITY OF SAVANNAH  
 WATER RESOURCES AND PUBLIC WORKS BUREAU  
 SCALE: N.T.S.  
 DATED: JAN 2017  
 PLATE NUMBER: W1

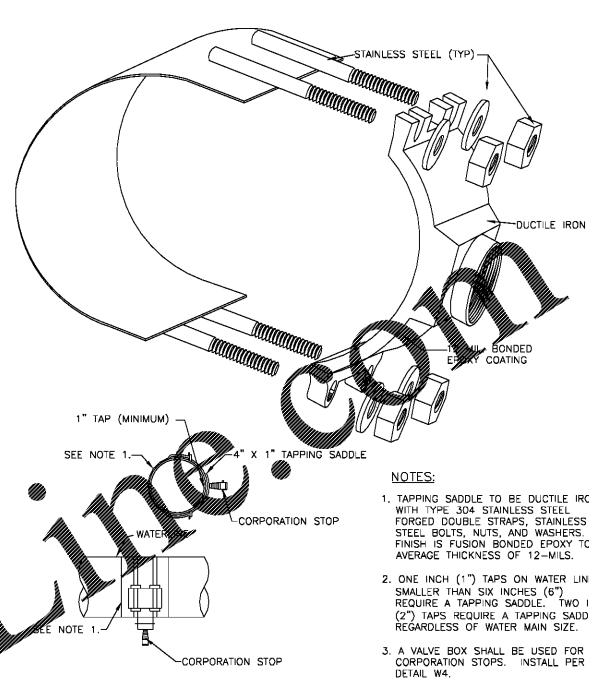


**NOTES:**

1. ALL FITTINGS IN LATERAL SHALL BE NO-LEAD BRASS COMPRESSION TYPE.
2. CURB STOP MARKER REQUIRED FOR NEW DEVELOPMENTS.
3. TERMINATE CURB STOP IN EXISTING METER BOXES PER DETAILS WB -W11.

WATER SERVICE LATERAL (4" OR SMALLER MAIN)

STANDARD CONSTRUCTION DETAILS  
 CITY OF SAVANNAH  
 WATER RESOURCES AND PUBLIC WORKS BUREAU  
 SCALE: N.T.S.  
 DATED: JAN 2017  
 PLATE NUMBER: W2

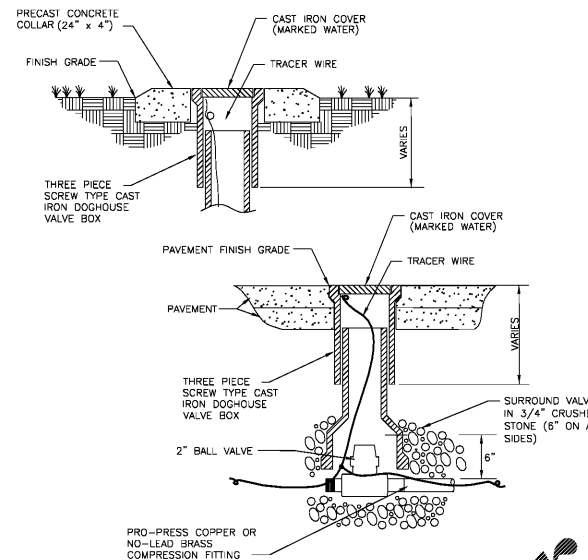


**NOTES:**

1. TAPPING SADDLE TO BE DUCTILE IRON WITH TYPE 304 STAINLESS STEEL FORGED DOUBLE STRAPS, STAINLESS STEEL BOLTS, NUTS, AND WASHERS. FINISH IS FUSION BONDED EPOXY TO AVERAGE THICKNESS OF 12-MILS.
2. ONE INCH (1") TAPS ON WATER LINES SMALLER THAN SIX INCHES (6") REQUIRE A TAPPING SADDLE. TWO INCH (2") TAPS REQUIRE A TAPPING SADDLE, REGARDLESS OF WATER MAIN SIZE.
3. A VALVE BOX SHALL BE USED FOR 2" CORPORATION STOPS. INSTALL PER DETAIL W4.

1" & 2" WATER TAPPING SADDLE

STANDARD CONSTRUCTION DETAILS  
 CITY OF SAVANNAH  
 WATER RESOURCES AND PUBLIC WORKS BUREAU  
 SCALE: N.T.S.  
 DATED: JAN 2017  
 PLATE NUMBER: W3

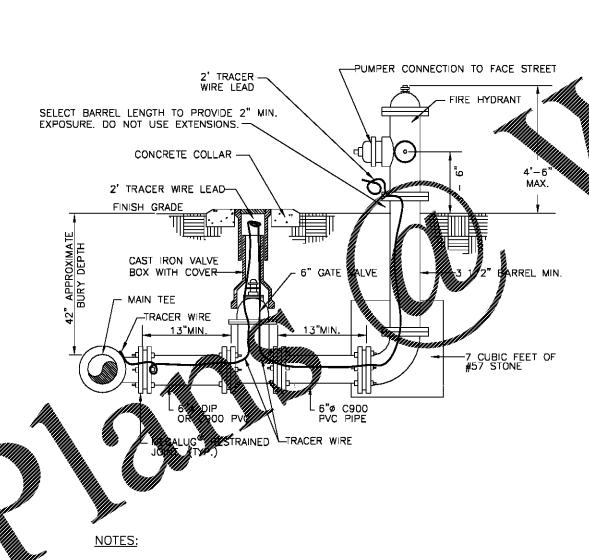


**NOTES:**

1. THIS DETAIL APPLIES TO 2" VALVES IN WATER MAINS AND LATERALS.
2. IN UNPAVED AREAS, PROPERLY BED AND SET EDGE OF PRECAST CONCRETE COLLAR FLUSH WITH FINISHED GRADE. NO COLLAR REQUIRED IN PAVED AREAS, SET VALVE FLUSH WITH PAVEMENT.
3. VALVE BOX SHALL NOT REST ON THE VALVE OR ON THE LINE.
4. CONNECT THE TRACER WIRE ON THE VALVE TO THE TRACER WIRE ON THE LINE WITH SPLICE CONNECTOR.

2" WATER VALVE AND VALVE BOX

STANDARD CONSTRUCTION DETAILS  
 CITY OF SAVANNAH  
 WATER RESOURCES AND PUBLIC WORKS BUREAU  
 SCALE: N.T.S.  
 DATED: JAN 2017  
 PLATE NUMBER: W4

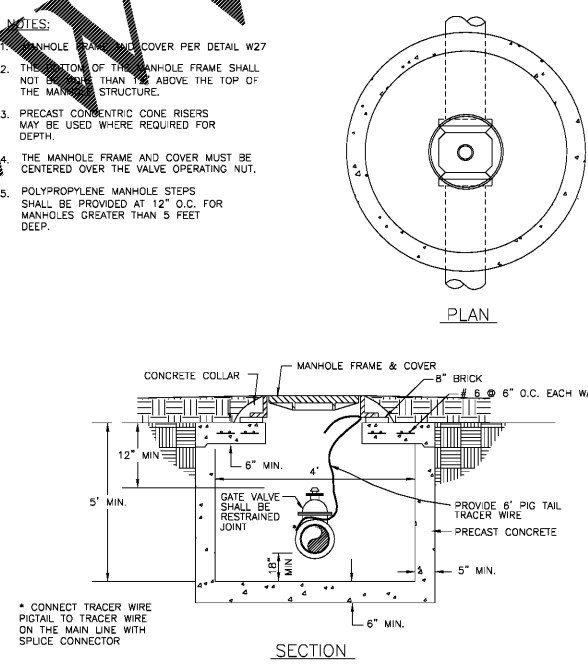


**NOTES:**

1. ALL JOINTS FROM MAIN TO HYDRANT SHALL BE RESTRAINED.
2. VALVE BOX AND COLLAR INSTALLED PER DETAIL W4.
3. REMOVE CHAINS AFTER INSTALLATION OF NEW HYDRANT.
4. CONNECT TRACER WIRE TO WIRE ON MAIN W/ SPLICE CONNECTOR.

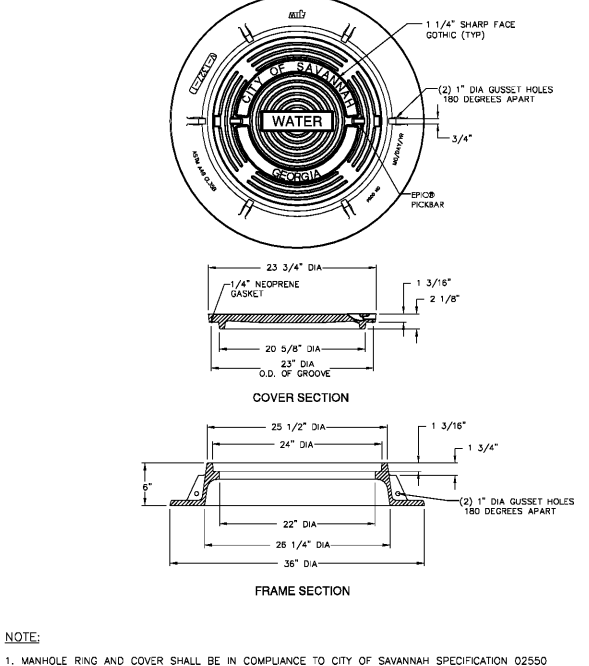
FIRE HYDRANT FOR STANDARD BURY MAINS

STANDARD CONSTRUCTION DETAILS  
 CITY OF SAVANNAH  
 WATER RESOURCES AND PUBLIC WORKS BUREAU  
 SCALE: N.T.S.  
 DATED: JAN 2017  
 PLATE NUMBER: W36



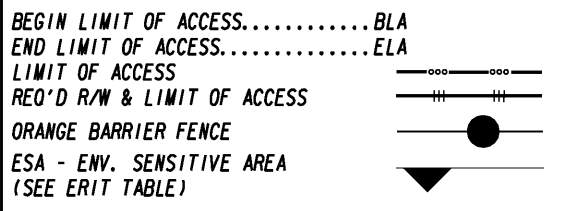
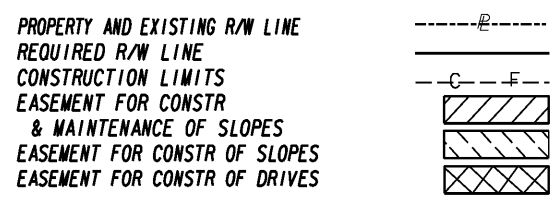
VALVE MANHOLE FOR 4"-8" GATE VALVES

STANDARD CONSTRUCTION DETAILS  
 CITY OF SAVANNAH  
 WATER RESOURCES AND PUBLIC WORKS BUREAU  
 SCALE: N.T.S.  
 DATED: JAN 2017  
 PLATE NUMBER: W25A



WATER MANHOLE RING & COVER

STANDARD CONSTRUCTION DETAILS  
 CITY OF SAVANNAH  
 WATER RESOURCES AND PUBLIC WORKS BUREAU  
 SCALE: N.T.S.  
 DATED: JAN 2017  
 PLATE NUMBER: W27



**THOMAS & HUTTON**  
 Engineering | Surveying | Planning | GIS | Consulting  
 50 Park of Commerce Way • PO Box 2727  
 Savannah, GA 31402-2727 • 912.234.5300  
 www.thomasandhutton.com  
 Charleston, SC | Columbia, SC | Myrtle Beach, SC  
 Savannah, GA | Wilmington, NC

REVISION DATES

NO.	DATE	DESCRIPTION

**UTILITY RELOCATION PLANS**  
 DELESSEPS/LA ROCHE AVE FM  
 WATERS AVE TO SKIDAWAY RD

CHECKED:	DATE:	DRAWING No. <b>44-0015</b>
BACKCHECKED:	DATE:	
CORRECTED:	DATE:	
VERIFIED:	DATE:	