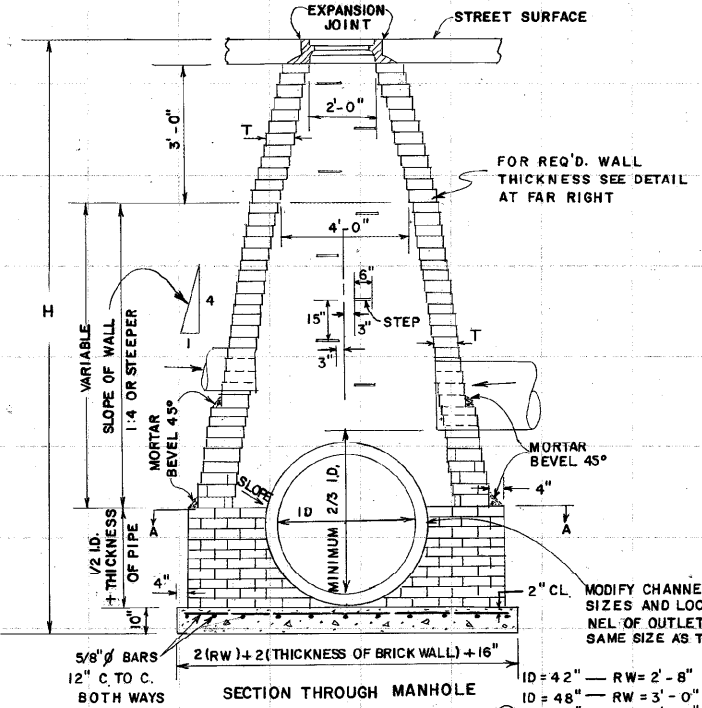
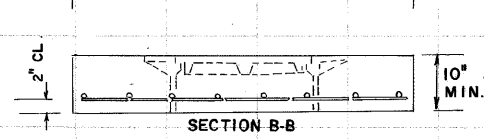
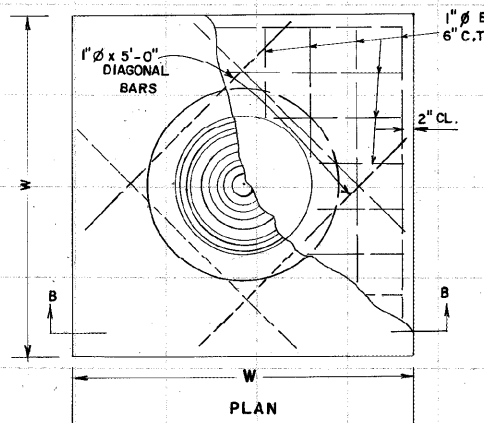


| STATE | PROJECT NUMBER | SHEET NO. | TOTAL SHEETS |
|-------|----------------|-----------|--------------|
| GA.   |                |           |              |

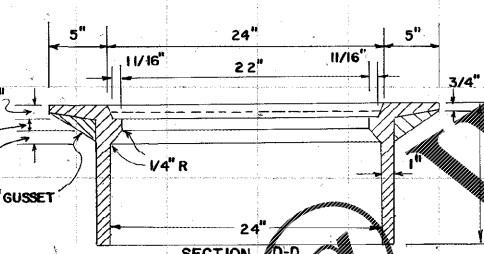
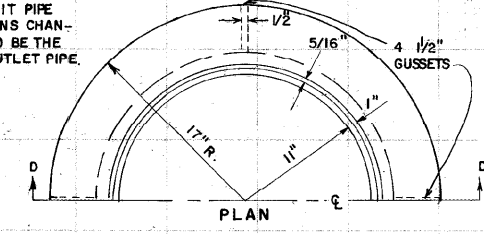
**BRICK MANHOLE SECTION**  
(PIPE OUTSIDE DIAMETER IS 48" OR MORE)



**REINFORCED CONCRETE COVER**

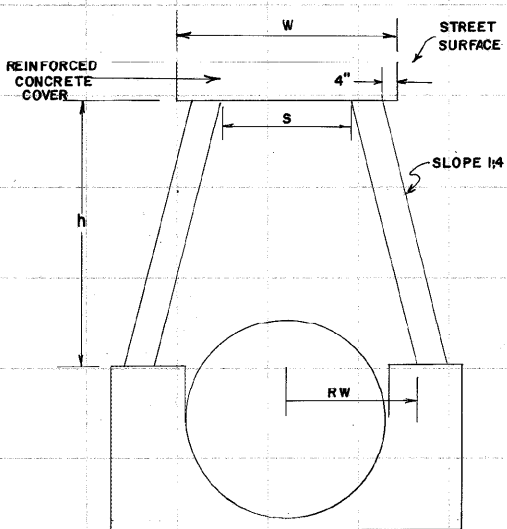


FRAME TO BE USED WITH CONCRETE COVER



SECTION D-D  
SCALE: 1/2" = 1'

**PLACEMENT FOR CONCRETE COVER**

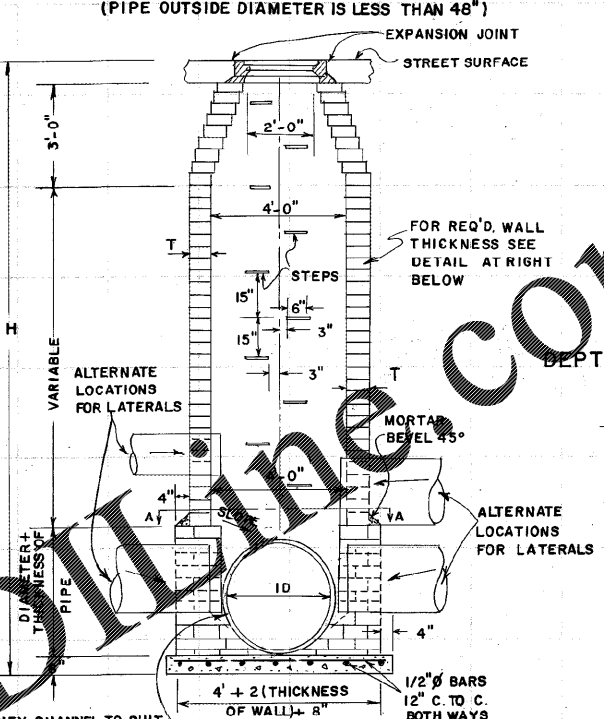


FORMULA FOR COMPUTING W  
RW = INSIDE RADIUS OF WALL  
 $S = 2RW - 1/2$   
 $W = S + 24"$

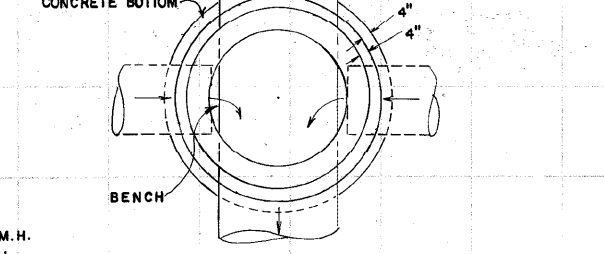
NOTE: USE CONCRETE COVER WITH MANHOLE CASTINGS IF FILL FROM TOP OF PIPE TO FINISHED SURFACE IS LESS THAN:  
4'-6" FOR 42" PIPE  
5'-0" FOR 48" PIPE  
5'-6" FOR 54" PIPE  
6'-0" FOR 60" PIPE  
6'-6" FOR 66" PIPE  
7'-0" FOR 72" PIPE  
7'-6" FOR 78" PIPE  
8'-0" FOR 84" PIPE

THICKNESS OF BRICK WALL (SEE DETAIL AT FAR RIGHT)  
DEPTH THICKNESS (T)  
0' TO 10' \* 8" MIN.  
10' TO 20' 12" MIN.  
20' TO 30' 16" MIN.  
\*FOR COMBINATION BRICK & PRECAST M.H. (SEE BELOW) ONLY 12" OR 16" BRICK WALL THICKNESS IS TO BE USED FOR BASE.

**BRICK MANHOLE SECTION**  
(PIPE OUTSIDE DIAMETER IS LESS THAN 48")

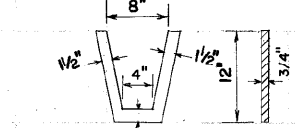


SECTION THROUGH MANHOLE



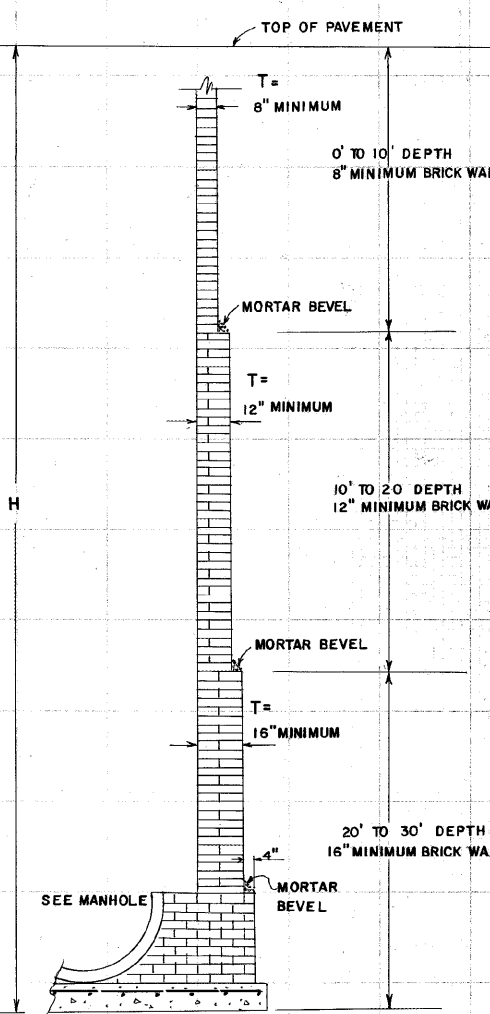
SECTION A-A

**CAST IRON STEP**



STEPS ARE REQUIRED IN ALL MANHOLES WHERE "H" IS GREATER THAN 4'-0". NUMBER AND LOCATION OF STEPS TO BE AS DIRECTED BY THE ENGINEER. PLASTIC OR RUBBER COATED STEPS LISTED IN THE GA. D.O.T. QUALIFIED PRODUCTS MANUAL MAY BE SUBSTITUTED.

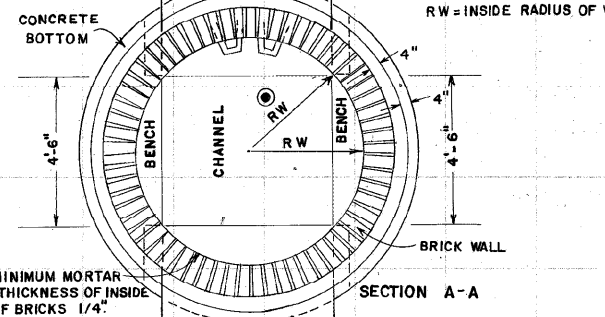
**DEPTH LIMITS FOR INCREASING WALL THICKNESS**



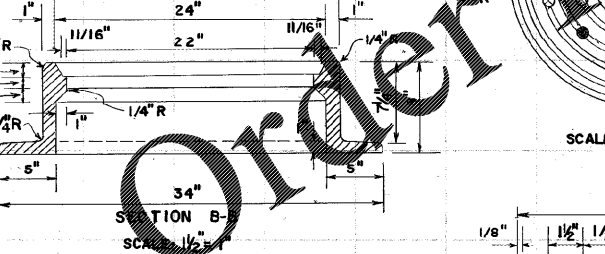
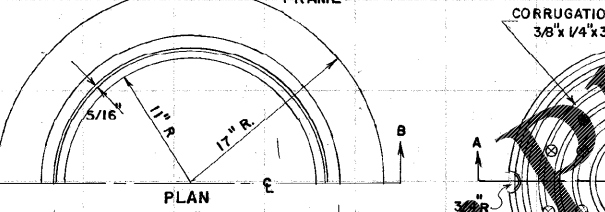
SECTION THROUGH MANHOLE

|          |             |
|----------|-------------|
| ID = 42" | RW = 2'-8"  |
| ID = 48" | RW = 3'-0"  |
| ID = 54" | RW = 3'-2"  |
| ID = 60" | RW = 3'-4"  |
| ID = 66" | RW = 3'-7"  |
| ID = 72" | RW = 3'-9"  |
| ID = 78" | RW = 3'-11" |
| ID = 84" | RW = 4'-2"  |

RW = INSIDE RADIUS OF WALL



SECTION A-A

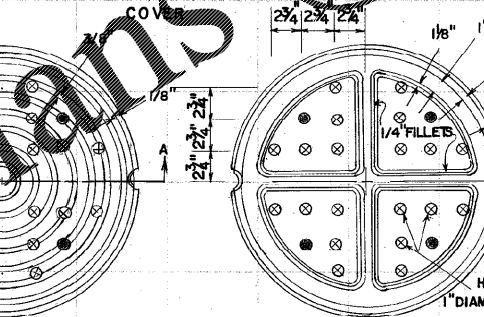


SECTION B-B  
SCALE: 1/2" = 1'

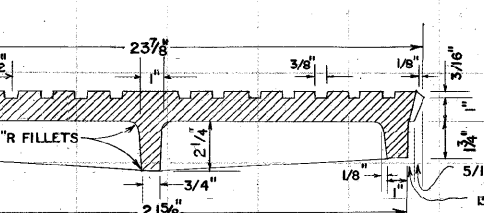
APPROXIMATE WEIGHTS  
C.I. FRAME 282 LBS.  
C.I. COVER 178 LBS.

NOTE: COVER AND FRAME MUST BE FITTED BEFORE LEAVING SHOP. PAINT ACTUAL WEIGHT OF EACH CASTING ON ITS FACE.  
MANHOLE FRAME & COVER SHOWN ON STD. 1011A PRECAST MAY BE USED AN ALTERNATE TO CASTINGS SHOWN HERE.

**MANHOLE CASTINGS**



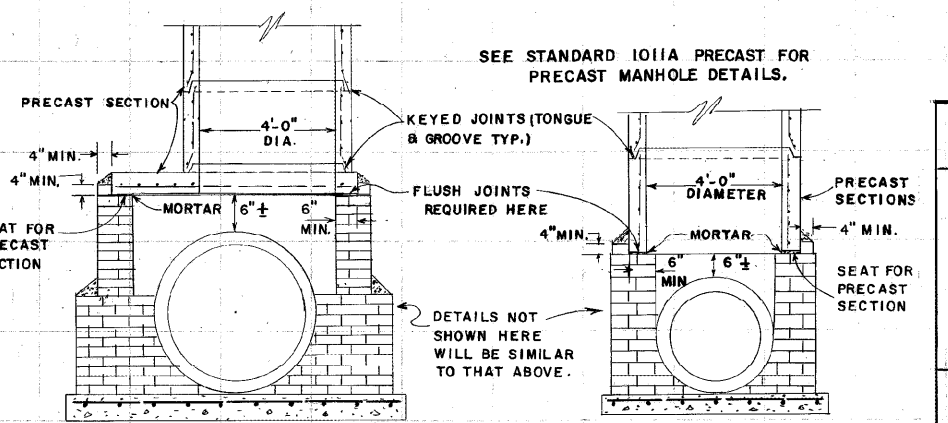
SCALE: 1/2" = 1'



SECTION A-A  
SCALE: 3/8" = 1'

**ALTERNATE - COMBINATION BRICK & PRECAST MANHOLES**

NOTES FOR COMBINATION MANHOLE:  
- BRICK PORTION OF MANHOLE WILL BE CONSTRUCTED WITH SEAT TO GIVE BEST POSSIBLE FIT FOR PRECAST UNIT. MINIMUM THICKNESS FOR BRICK WALL WILL BE 12" FOR H TO 20 FT. AND 16" FOR H=20 FT. TO 30 FT.  
- PRECAST UNIT WITHOUT TONGUE OR GROOVE AT BOTTOM SHALL BE PLACED IN BRICK SEAT WITH MORTAR IN JOINT ALL ROUND. BRICK BASE SHALL SET FOR 24 HOURS MIN. BEFORE PRECAST SECTIONS ARE INSTALLED.  
- STEPS IN THE BRICK PORTION OF MANHOLE WILL BE IN ALIGNMENT WITH AND MATCH THE STEPS IN THE PRECAST SECTIONS RATHER THAN AS SHOWN FOR THE ALL BRICK MANHOLES.



DEPARTMENT OF TRANSPORTATION  
STATE OF GEORGIA

**STANDARD  
BRICK MANHOLES**

SCALE AS SHOWN  
REV. B REDR. OCTOBER, 1981

DES. 8-58  
DRW. R.M.U.  
TRA. G.M.E.  
CHK. R.K.C.

(SUBMITTED) *Harold H. Hask*  
STATE ROAD & AIRPORT DESIGN ENGR.

(APPROVED) *Thomas D. Abrelando*  
STATE HIGHWAY ENGINEER

NUMBER  
**1011A**