

Curve* 2 - WARD STREET
 PI Sta- 1301+16.50
 N- 740607.94
 E- 995223.06
 DELTA- 46°13'11.6" (RT)
 D-114°35'29.6"
 T- 21.33
 L- 40.33
 R- 50.00
 E- 4.36
 SE-NC
 DESIGN SPEED - 15 MPH

CONTROL POINT 36
 IPF CAPPED T&H
 LOCATION CONTROL DELTA
 N 740112.874
 E 996267.105
 ELEV. 25.78
 STA: 166+33.33
 OFFSET: 777.77' LT

Curve* 3 - FLEET STREET
 PI Sta- 1400+62.19
 N- 740501.65
 E- 995280.68
 DELTA- 40°10'23.4" (LT)
 D-114°35'29.6"
 T- 18.28
 L- 35.06
 R- 50.00
 E- 3.24
 SE-NC
 DESIGN SPEED - 15 MPH

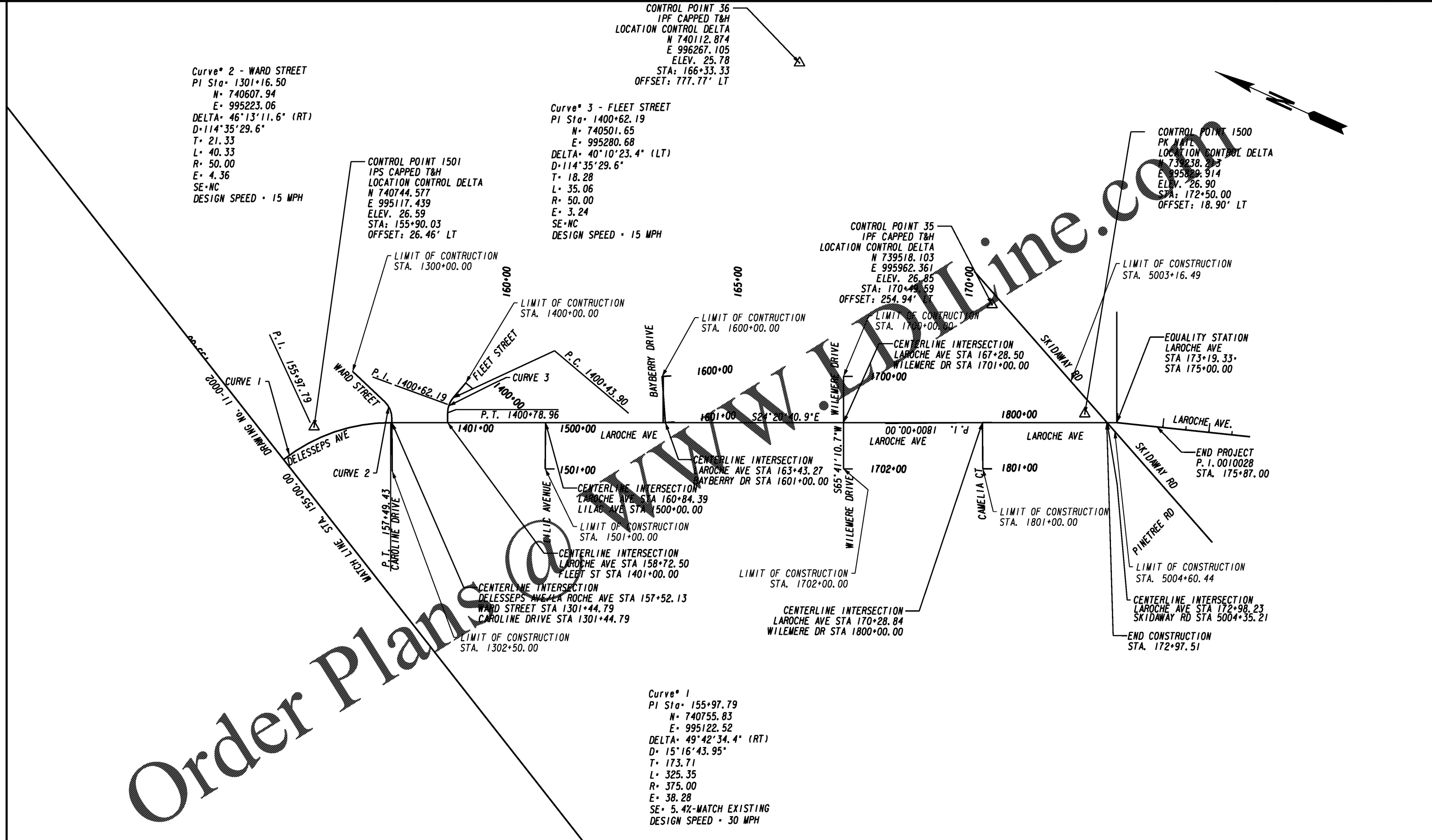
CONTROL POINT 1501
 IPS CAPPED T&H
 LOCATION CONTROL DELTA
 N 740744.577
 E 995117.439
 ELEV. 26.59
 STA: 155+90.03
 OFFSET: 26.46' LT

CONTROL POINT 35
 IPF CAPPED T&H
 LOCATION CONTROL DELTA
 N 739518.103
 E 995962.361
 ELEV. 26.85
 STA: 170+42.59
 OFFSET: 254.94' LT

CONTROL POINT 1500
 PK NATE
 LOCATION CONTROL DELTA
 N 739238.223
 E 995829.914
 ELEV. 26.90
 STA: 172+50.00
 OFFSET: 18.90' LT

Order Plans

Curve* 1
 PI Sta- 155+97.79
 N- 740755.83
 E- 995122.52
 DELTA- 49°42'34.4" (RT)
 D- 15°16'43.95"
 T- 173.71
 L- 325.35
 R- 375.00
 E- 38.28
 SE- 5.4%-MATCH EXISTING
 DESIGN SPEED - 30 MPH



THOMAS & HUTTON
 Engineering | Surveying | Planning | GIS | Consulting
 50 Park of Commerce Way • PO Box 2727
 Savannah, GA 31402-2727 • 912.234.5300
 www.thomasandhutton.com
 Charleston, SC | Columbia, SC | Myrtle Beach, SC
 Savannah, GA | Wilmington, NC



REVISION DATES

NO.	DATE	DESCRIPTION

CONSTRUCTION LAYOUT

DELESSEPS/LA ROCHE AVE FM
 WATERS AVE TO SKIDAWAY RD

CHECKED:	DATE:	DRAWING No.
BACKCHECKED:	DATE:	11-0003
CORRECTED:	DATE:	
VERIFIED:	DATE:	