


X KEYNOTES

1. E.C. SHALL MAKE CONNECTIONS BETWEEN THE OUTDOOR UNIT (HP-01) AND INDOOR UNIT (DFC-01) OF THE MINI-SPLIT SYSTEM.
2. EQUIPMENT DISCONNECT SWITCHES SHALL BE SUPPLIED AND PRE-WIRED FOR CONNECTION TO COOLER/FREEZER/STORAGE PACKAGE. E.C. SHALL MAKE ALL FINAL CONNECTIONS.
3. PROVIDE CONTROL CIRCUIT AND 3/4" CONDUIT TO CONDENSING UNIT ON ROOF.
4. ALL CONDUIT AND WIRE FOR WALK-INS SHALL BE DONE OUTSIDE OF WALK-INS AND ALL PENETRATIONS SHALL BE SEALED PER THE NEC.
5. E.C. SHALL PROVIDE (2) #12 AND (1) #12 GROUND IN 1/2" CONDUIT FOR 208V/1P ELECTRIC DEFROST CONTROL FROM CONDENSING UNIT LOCATED ON ROOF.
6. TRAP CONDENSATE LINES WITH HEAT TAPE AND PROVIDE WIRE CONNECTION. REFERENCE HEAT TAPE MANUFACTURER INSTRUCTIONS.
PROVIDE JUNCTION BOX FOR CONNECTION TO DOOR HEAT TRACE. BOX LOCATIONS SHALL NOT INTERFERE WITH DOOR OPERATION. FINAL CONNECTION TO HEAT TRACE SHALL BE BY OTHERS.
8. RECEPTACLE RECESSED IN WALL FOR PAPER TOWEL DISPENSER. USE AN ARLINGTON INDUSTRIES RECESSED ELECTRICAL BOX (DVF1W) TO MOUNT STANDARD RECEPTACLE AND WALL PLATE AT HEIGHT INDICATED. BOX SHALL BE CENTERED ON PAPER TOWEL DISPENSER. REF ARCHITECTURAL FOR HORIZONTAL ROUGH-IN DIMENSIONS.
9. HAND DRYER CONNECTION. COORDINATE EXACT LOCATION AND ELEVATION WITH ARCHITECTURAL DRAWINGS PRIOR TO ROUGH-IN.
10. USB RECEPTACLE. MOUNT AT HEIGHT INDICATED ON DRAWINGS. RECEPTACLES SHALL HAVE DUAL USB CHARGING PORTS (HUBBELL USB15X2).
11. FEED THROUGH GFCI RECEPTACLE.
12. CONNECT TO GFCI PROTECTED TERMINALS OF UPSTREAM GFCI DEVICE.
13. REFER TO HOOD SHEETS FOR EXACT RESPONSIBILITIES AND SPECIFICATIONS.
14. RECEPTACLE & DATA PORTS RECESSED IN WALL FOR MONITORS. USE AN ARLINGTON INDUSTRIES RECESSED DOUBLE GANG ELECTRICAL BOX (TVBS605) TO MOUNT STANDARD DUPLEX RECEPTACLE. DATA PORTS AND WALL PLATE AT HEIGHT INDICATED.
15. MOUNT RECEPTACLE AT 24" AFF RECEPTACLE SHALL BE HUBBELL TYPE IG240 QUAD WITH ISOLATED GROUND. ROUTE FLEX CONDUIT BACK THROUGH COUNTER TO SIDE WALL.



HARRISON FRENCH & ASSOCIATES, LTD.

1705 S. Walton Blvd., Suite 3
Bentonville, Arkansas 72712
t 479.273.7780
f 888.520.9685
www.hfa-ae.com

STIPULATION FOR REUSE


THIS DRAWING AND SPECIFICATIONS ARE THE PROPERTY OF HFA. IT IS TO BE USED ONLY FOR THE PROJECT AND SITE SPECIFICALLY IDENTIFIED ON THIS DRAWING. NO PART OF THIS DRAWING OR ANY INFORMATION CONTAINED HEREIN IS TO BE REPRODUCED OR TRANSMITTED IN ANY FORM OR BY ANY MEANS, ELECTRONIC OR MECHANICAL, INCLUDING PHOTOCOPYING, RECORDING, OR BY ANY INFORMATION STORAGE AND RETRIEVAL SYSTEM, WITHOUT THE WRITTEN PERMISSION OF HFA.

REMODEL

STORE NUMBER: 447
USE CHECKLIST OF QUANTITIES
JOB NUMBER: 03-18-10417

ISSUE BLOCK	
NO.	DESCRIPTION

CHECKED BY: CAR
DRAWN BY: DFF
DOCUMENT DATE: 02/05/21

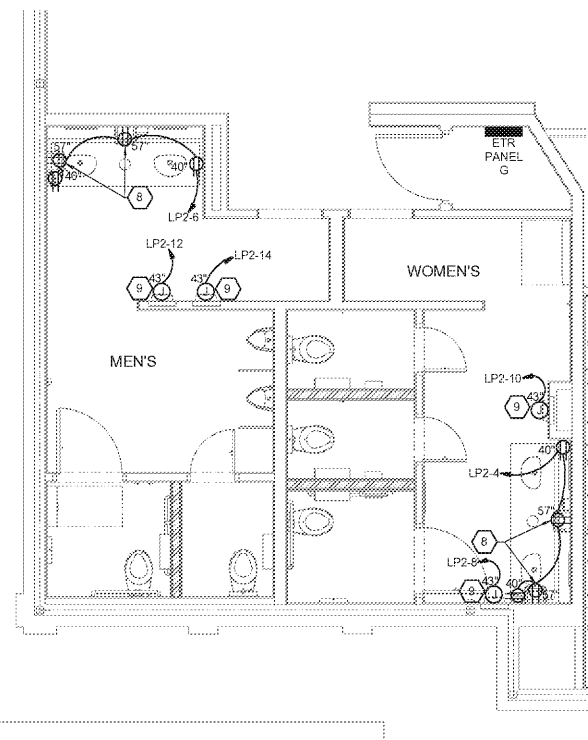
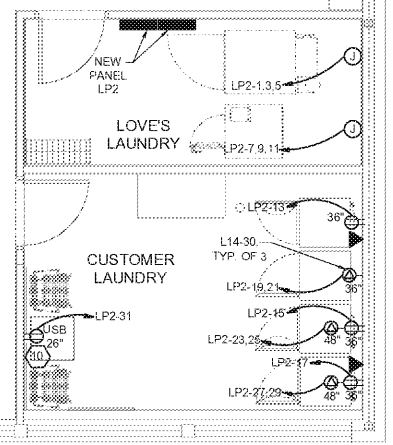
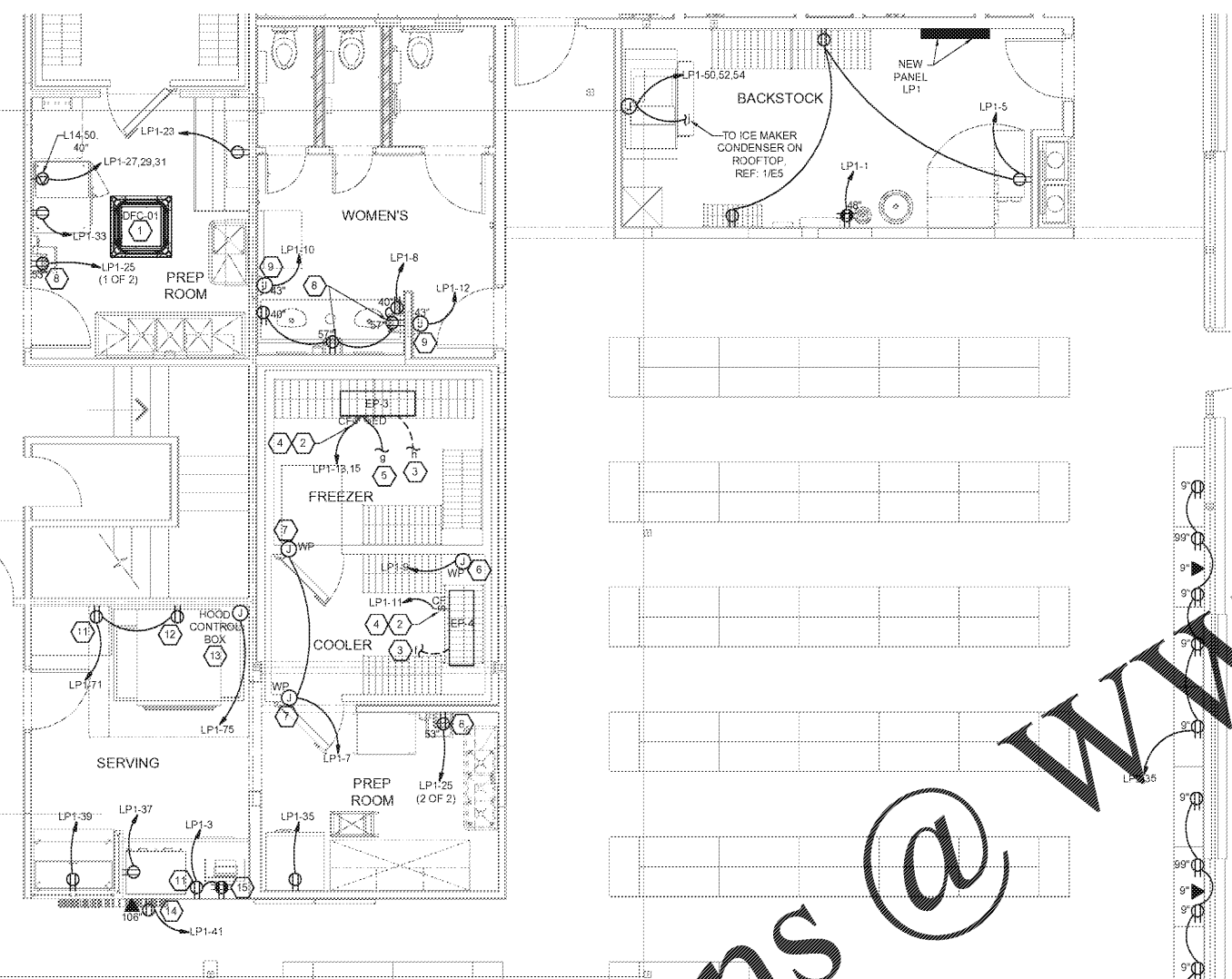


NATHAN KYLE CONNOR
REGISTERED ELECTRICAL ENGINEER
No. 11501535
STATE OF ARKANSAS
Professional Engineer Seal

COORDINATE THE EXTENT OF ALL REQUIRED ELECTRICAL DEMOLITION WITH CONSTRUCTION MANAGER

ENLARGED FLOOR PLANS

SHEET: **E4**



1 ENLARGED POWER PLAN
SCALE: 1/4" = 1'-0"

2 RESTROOM POWER PLAN
SCALE: 1/4" = 1'-0"

EACH SUBCONTRACTOR IS RESPONSIBLE FOR HAVING A THOROUGH KNOWLEDGE OF ALL DRAWINGS AND SPECIFICATIONS IN THEIR RELATED FIELD. THE FAILURE TO ACQUAINT HIMSELF WITH THIS KNOWLEDGE DOES NOT RELIEVE THE RESPONSIBILITY OF PERFORMING HIS WORK PROPERLY. NO ADDITIONAL COMPENSATION SHALL BE ALLOWED BECAUSE OF CONDITIONS THAT OCCUR DUE TO FAILURE TO FAMILIARIZE WORKERS WITH THIS KNOWLEDGE.

Order Plans @ www.LDILine.com

F:\031\031_02.dwg - User: hfa\hfa - 02/05/21 10:47:15 AM - 1/16/21 10:47:15 AM - 1/16/21 10:47:15 AM